

Product datasheet for **RG213911**

KIF3B (NM_004798) Human Tagged ORF Clone

Product data:

Product Type:	Expression Plasmids
Product Name:	KIF3B (NM_004798) Human Tagged ORF Clone
Tag:	TurboGFP
Symbol:	KIF3B
Synonyms:	FLA8; HH0048; KLP-11; RP89
Mammalian Cell Selection:	Neomycin
Vector:	pCMV6-AC-GFP (PS100010)
E. coli Selection:	Ampicillin (100 ug/mL)



[View online »](#)

ORF Nucleotide
Sequence:

>RG213911 representing NM_004798
Red=Cloning site Blue=ORF Green=Tags(s)

TTTTGTAATACGACTCACTATAGGGCGGCCGGGAATTCGTCGACTGGATCCGGTACCGAGGAGATCTGCC
GCC**CGCATCGCC**

ATGTCAAAGTTGAAAAGCTCAGAGTCAGTCAGGGTGGTGGTTCGCTGTCGGCCCATGAATGGCAAGGAAA
AGGCTGCTTCGTATGACAAAGTGGTGGATGTGGATGTTAAGCTGGGGCAGGTGTCTGTGAAGAACCCCAA
AGGGACGGCCCATGAAATGCCCAAGACCTTCACCTTTGATGCCGTCTATGACTGGAATGCCAAGCAGTTT
GAACTGTACGATGAGACGTTCCGACCCTTGTGACTCTGTCCTGCAAGGTTTCAATGGAACATTTTGTG
CCTATGGACAAACTGGGACAGGAAAAACCTACACCATGGAAGGAATCCGTGGTGACCCTGAAAAAGAGG
AGTCATTCCTAACTATTTGACCATATCTTCAACCACATCTCTCGATCCCAGAATCAACAATACCTGGTC
AGGGCTTCTTACTTAGAGATCTACCAGGAGGAGATCCGAGATTTGCTCTCAAAGGATCAGACAAAAGGC
TTGAGCTCAAAGAGAGGCTGACACAGGAGTGTATGTGAAAGACCTGTCTTCTTTGTCCAAAGAGTGT
GAAGGAGATAGAGCATGTGATGAATGTGGGAACCAAGACCGTTCTGTCGGTGTACCAACATGAACGAG
CACAGCTCGCGTTCTCATGCAATTTTCGTTATCACTATTGAGTGCAGCGAGGTGGGCCTCGATGGTGAAA
ACCACATCCGTGTAGGAAAATTGAACCTTGTAGATCTTGTGTCGACGGAACGGCAAGCAAGACCGCGC
ACAAGGGGAGAGATTAAGAAGCTACCAAGATCAACCTCTCCCTTTCCGCTTTGGGTAATGTCTCTCT
GCTCTAGTGGACGGCAAAAGCACTCACATTCATATCGGGACTCAAAGCTTACCAGGCTCCTCCAAGATT
CCCTTGGTGGCAATGCCAAGACTGTGATGGTGGCAACGTGGGGCCTGCCTTTACAACGTAGAAGAGAC
TCTGACCACTCTGCGATATGCCAACCGTCCAAAAACATTAAGAACAACCAAGGGTCAATGAGGACCCC
AAGGATGCCCTCCTTCGAGAATTCAGGAAGAGATTGCTCGGCTCAAGGCCAGCTGGAAAAACGGTCCA
TTGGTAGGAGGAAGGGCGAGAGAAGCGGAGGGAAGGTGGTGGCAGTGGTGGGGTGGGGAAGAGGAGGA
GGAGGAGGAGAAGAGGGTGGAGGAGGAAGGGGATGATAAGGATGATTACTGGCGGGAACAGCAAGAAAA
CTGGAGATTGAGAAGCGGCCATTGTAGAGGATCACAGCTTGGTTCAGAGGAGAAGATGAGGCTGCTGA
AGGAGAAAGAGAAAAAGATGGAGGACCTGCGGGGAGAAAGGATGCTGCCGAGATGCTGGGCGCCAAGAT
CAAGGCCATGGAGAGTAAGTTGCTTGTGGAGGAAAAATATAGTAGATCATACGAATGAACAGCAGAAA
ATCCTGGAGCAGAAACGACAGGAAATGCAGAGCAGAAACGTGAGAAAGAGAAATCCAGCAACAGATGG
AAAGTCGAGATGAGGAGACCTTGAACCTAAAGAGACATACAGCTCATTGCAGCAAGAGGTGGACATCAA
GACCAAAAACTCAAAAAGCTCTTCTCCAAGCTTCAGGCAGTGAAGGCTGAGATCCATGACCTCCAAGAA
GAACACATCAAGGAGCGCAAGAGCTAGAGCAGACTCAGAATGAGCTACCAGGGAGCTGAAACTCAAGC
ATCTTATTATAGAAAACCTTATCCCTCTGGAAGAAAAAGTAAAATTATGAATAGAGCCTTCTTTGATGA
AGAGGAAGATCATTGAAACTACATCTATAACCAGACTGGAGAACCAGCAGATGATGAAGCGGCCAGTC
TCAGCCGTGGGATATAAGAGACCATTGAGCCAGCACGCAAGAATGTCCATGATGATTCGTCAGAGGCC
GATATAGGGCAGAAAAACATTGTGCTGTTAGAGCTGGACATGCCAGCCGACCACCAGAGACTATGAGGG
TCCAGCCATTGCCCAAGGTCCAGGCTGCATTGGATGCGGCTCTGCAGGATGAAGATGAGATACAGGTG
GATGCATCATCTTTGAAAGCACTGCAATAAGAAATCCAAGGCCAGGCCTAAAAGTGGAAAGGAAGTCGG
GATCCTCCTCTTCTCAGGAACCCCTGCATCTCAGCTTTATCCACAGTCTCGGGGCTGTTCCAA
G

ACGCGTACGCGGCCGCTCGAG – GFP Tag – GTTTAA

Protein Sequence: >RG213911 representing NM_004798
 Red=Cloning site Green=Tags(s)

```
MSKLKSSSESVRVVRCRPMNGKEKAASYDKVVDVVKLGQVSVKNPKGTAHEMPKTFTFDAVYDWNKQF
ELYDETRPLVDSVLQGFNGTIFAYGQTGTGKTYTMEGIRGDPEKRGVIPNSFDHIFTHISRSQNQQYL
RASYLEIYQEEIRDLLSKDQTKRLELKERPDTGVVVKDLSFVTKSVKEIEHVMNVGNQNRSVGATNMNE
HSSRSHAI FVITIECSEVGLDGENHIRVVKLNLVLAGSERQAKTGAQGERLKEATKINLSLSALGNVIS
ALVDGKSTHIPPYRDSKLTRLLQDSLGGNAKTMVANVPASYNVEETLTTLRYANRAKNIKPKRVNEDP
KDALLREFQEEIARLKAQLEKRSIGRRKRREKRREGGSGGGGEEEEEEEEEGEEGDDKDDYWREQQEK
LEIEKRAIVEDHSLVAEEKMRLLEKEKEMEDLRREKDAEMLGAKIKAMESKLLVGGKNIVDHTNEQQK
ILEQKRQEIAEQRREREIQQQMESRDEETLELKETYSLQQEVDIKTKLKLKFLSKLQAVKAEIHDLQE
EHIKERQELEQTQNELTRELKHLKHLIIENFI PLEEKSKIMNRAFFDEEDHWKLPITRLENQQMMKRPV
SAVGYKRPLSQHARMSMIRPEARYAENIVLLELDMPSTRTRDYEGPAIAPKVQAALDAALQDEDEIQV
DASSFESTANKKSKARPKSGRKS GSSSSSSSGTPASQLYPSRGL VPK
```

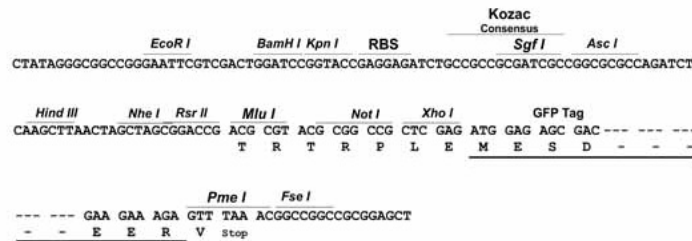
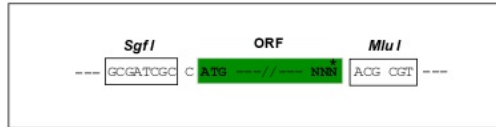
TRTRPLE - GFP Tag - V

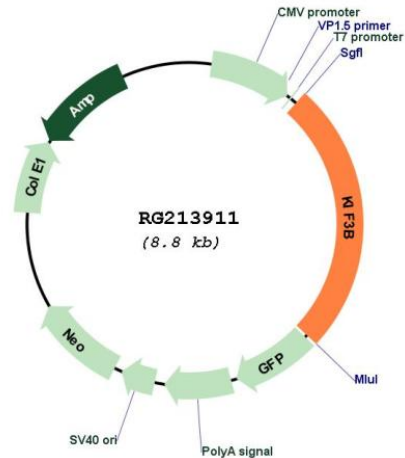
Restriction Sites:

SgfI-MluI

Cloning Scheme:

Cloning sites used for ORF Shutting:



Plasmid Map:


ACCN: NM_004798

ORF Size: 2241 bp

OTI Disclaimer: The molecular sequence of this clone aligns with the gene accession number as a point of reference only. However, individual transcript sequences of the same gene can differ through naturally occurring variations (e.g. polymorphisms), each with its own valid existence. This clone is substantially in agreement with the reference, but a complete review of all prevailing variants is recommended prior to use. [More info](#)

OTI Annotation: This clone was engineered to express the complete ORF with an expression tag. Expression varies depending on the nature of the gene.

Components: The ORF clone is ion-exchange column purified and shipped in a 2D barcoded Matrix tube containing 10ug of transfection-ready, dried plasmid DNA (reconstitute with 100 ul of water).

Reconstitution Method:

1. Centrifuge at 5,000xg for 5min.
2. Carefully open the tube and add 100ul of sterile water to dissolve the DNA.
3. Close the tube and incubate for 10 minutes at room temperature.
4. Briefly vortex the tube and then do a quick spin (less than 5000xg) to concentrate the liquid at the bottom.
5. Store the suspended plasmid at -20°C. The DNA is stable for at least one year from date of shipping when stored at -20°C.

RefSeq: [NM_004798.4](#)

RefSeq Size: 6103 bp

RefSeq ORF: 2244 bp

Locus ID: 9371

UniProt ID: [O15066](#)

Cytogenetics: 20q11.21

Domains: kinesin

Protein Families: Druggable Genome

Gene Summary: The protein encoded by this gene acts as a heterodimer with kinesin family member 3A to aid in chromosome movement during mitosis and meiosis. The encoded protein is a plus end-directed microtubule motor and can interact with the SMC3 subunit of the cohesin complex. In addition, the encoded protein may be involved in the intracellular movement of membranous organelles. This protein and kinesin family member 3A form the kinesin II subfamily of the kinesin superfamily. [provided by RefSeq, Jul 2008]