

## Product datasheet for **RG213888**

### ATP2B4 (NM\_001001396) Human Tagged ORF Clone

#### Product data:

Product Type:	Expression Plasmids
Product Name:	ATP2B4 (NM_001001396) Human Tagged ORF Clone
Tag:	TurboGFP
Symbol:	ATP2B4
Synonyms:	ATP2B2; MXRA1; PMCA4; PMCA4b; PMCA4x
Mammalian Cell Selection:	Neomycin
Vector:	pCMV6-AC-GFP (PS100010)
E. coli Selection:	Ampicillin (100 ug/mL)
ORF Nucleotide Sequence:	>RG213888 representing NM_001001396 Red=Cloning site Blue=ORF Green=Tags(s)

TTTTGTAATACGACTCACTATAGGGCGCCGGGAATTCGTCGACTGGATCCGGTACCGAGGAGATCTGCC  
GCC**CGATCGCC**

ATGACGAACCCATCAGACCGTGTCTTGCCTGCCAACTCGATGGCCGAGAGCCGTGAAGGGGACTTTGGCT  
GCACAGTAATGGAAGTGAAGGCTCATGGAGCTGCGTTCAAGGGATGCACTGACCCAGATTAATGTCCA  
CTATGGAGGTGTACAGAATCTCTGCAGTAGACTGAAAACCTCCCTGTGGAAGGTCTGTCTGGAAACCT  
GCAGATCTGGAGAAACGTAGGCAGGTGTTGGACACAACGTGATCCCCCAGAAAGCCCAAGACTTTCT  
TAGAATTAGTGTGGGAAGCTCTCAAGATGTCACGCTTATCATCCTGGAGATTGCAGCCATCATCTCCCT  
GGTCTGTCTTTTATCGCCCTGCTGGTGAAGAAAATGAACTGTGTGGTCAAGTCGCAACTACCCAGAA  
GATGAAAATGAGGCACAAGCTGGCTGGATTGAGGGGCGAGCCATCCTTTTCTCAGTGATCATCGTGGTGT  
TAGTGACTGCCTTTAATGATTGGAGCAAAGAGAAGCAATTCGGGGGCTGCAAGTCCGCAATTGAACAGGA  
GCAAAAGTTCTCCATCATCCGAAACGGTCAACTCATCCAGCTCCCTGTGGCTGAGATTGTGGTGGTGTGAT  
ATTGCCAAGTCAAATACGGTGTCTGCTGCCTGCAGATGGAATCCTGATCCAAGGAATGATCTGAAGA  
TTGATGAGAGCTCTGACAGGGGAATCTGACCATGTCAAGAAGTCCCTGGACAAAGACCCCATGTTGCT  
CTCAGGGACCCATGTCATGGAAGTCTGGCCGGATGGTGGTACAGCTGTTGGTGTCAACTCTCAGACT  
GGAATCATCCTTACTCTTGGGGTCAATGAGGATGACGAAGGGGAGAAAAAGAAGAAAGTAAAAAAC  
AAGGAGTCCCTGAAAATCGCAACAAGCAAGACCAAGACCGGAGTGGCCCTGAAAATCCAGCCACTCAA  
CAGCCAGGAGGGAATCGACAATGAGGAAAAGGACAAGAAGGCAGTCAAGTGCCTAAAAAGGAGAAGTCA  
GTGCTGCAGGGCAAGCTGACTCGCTGGCTGTTGAGATTGGGAAAGCCGGTCTGCTCATGTCTGCTCTCA  
CGGTTTTATCCTGATTCTATACTTTGTGATTGACAACCTTTGTGATAAATCGCAGACCATGGCTCCCTGA  
GTGACTCCCATCTACATCCAGTACTTTGTCAAGTTCTTCATCATCGGCATCACTGTACTGGTGGTGGCT  
GTGCCAGAGGGGCTGCCTCTGGCTGTACCATCTCACTGGCTACTCTGTGAAGAAAATGATGAAAGACA  
ATAACCTAGTACGGCACTTGGATGCTTGTGAGACCATGGGCAACGCCACCGCCATCTGCTCTGATAAGAC  
AGGCACGTTGACCATGAACCGCATGACTGTGGTACAAGCTTATATTGGGGCATCCATTACCGTCAAATC



[View online »](#)

CCAAGCCCTGATGTCTTCTGCCCCAAAGTCCTGGACCTCATTGTCAATGGCATTCTATCAACAGTGCTT  
ATACCTCCAAGATTCTGCCTCCAGAGAAGGAGGGAGGCCTGCCTCGGCAGGTGGGCAACAAGACCGAGTG  
TGCTCTGTAGGCTTTGTACAGATCTGAAGCAGGATTATCAGGCTGTGCGTAATGAAGTGCCCCGAGGAG  
AAGCTCTACAAGGTGTACACCTTAACTCAGTGCAGCAAGTCAATGAGCACCGTCATCAGGAATCCCAACG  
GTGGCTCCGATGTACAGCAAGGGCGCCTCTGAGATCATCTTGCAGCAAGTGAATCGAATCCTGGACCG  
GAAAGGGGAAGCAGTGCCATTCAAGAATAAAGACAGAGATGATATGGTACGCACTGTATCGAGCCCATG  
GCCTGTGATGGACTCCGGACTATCTGCATAGCTTACCGGGACTTCGATGACACAGAGCCCTTTGGGACA  
ATGAGAATGAGATCCTCACCGAACTGACCTGTATCGCGGTGGTGGGCATTGAGGACCCTGTGCGCCAGA  
GGTGCCAGATGCTATTGCCAAATGCAAACAAGCTGGCATTACTGTGAGAATGGTACAGGTGACAACATC  
AACACAGCCCGGGCCATTGCCACCAATGTGGCATTCTGACACCTGGGGATGACTTCTGTGCTTAGAAG  
GCAAAGAATCAACCGGCTCATCCGCAACGAGAAAGGCGAGGTAGAGCAAGAAAAGCTGGACAAGATCTG  
GCCTAAGCTTCGGGTCTGGCGCATCTTCTCCACTGACAAGCACACCCTGGTAAAGGCATAATTGAC  
AGCACTGTTGGGAAACACCGGCAGGTCTGGCTGTACTGGTGTGACACAAATGACGGGCTGCTCTGA  
AGAAAGCGGATGTTGGTTTTGCCATGGGCATCGCAGGCACAGATGTAGCAAAGGAGGCTTCAGACATCAT  
CCTAACAGATGACAACCTCACCAGCATTGTGAAGGCAGTGTGTTGGGACGAAATGTCTATGACAGCATC  
TCCAAGTTCCTGCAGTTCAGCTCACTGTCAATGTGGTGGCCGTGATTGTAGCCTTCACTGGAGCCGTGA  
TCACTCAGGATCCCCATTGAAAGCTGTGAGATGTTGTGGGTTAATCTGATCATGGACACTTTTGCTTC  
ATTGGCCCTGGCCACAGAGCCCCCTACGGAATCTCTGTTGAAGCGGCGCCCTATGGCCGAAATAAGCCT  
CTGATCTCACGCACTATGATGAAGAATCTTGGGCCATGCATTCTATCAGCTCATTGTCATCTTTATCC  
TTGTCTTTCGGGTGAGAAATCTTTGATATTGATAGTGGGAGGAAGGCACCTCTACATTCACCACCCAG  
CCAGCACTATACCATTGTTTTAACACCTTCGTGCTGTGAGCTCTTCAATGAAATCACTCCCGAAAG  
ATCCATGGAGAGAAGAAGCTCTTTTCAGGCATCTACCGCAACATTATCTTCTGCTCTGTAGTCTTGGCA  
CATTCTGCTGCCAGATTTTCATCGTGAATTTGGGGTAAACCCTCAGTTGTACAAGCCTCAGCCTGTC  
TCAGTGGCTGTGGTGTCTTTCATTGGGATTGGAGAATTCTGTGGGGCCAGTTCATCTCCGAATACCT  
ACCCGATCCCTGAAGTTCCTGAAGGAGGCTGGGCATGGCACCAACAAAGAGGAGATCACCAAGGATGCCG  
AGGGACTGGATGAGATTGACCATGCTGAGATGGAGCTGCGCCGAGGCCAGATCCTCTGGTCCGGGGCCT  
GAACCGTATCCAGACTCAGATCGACGTAATTAACACATTCCAGACGGGAGCCTTTTTAAGGGAGTCCTA  
AGGCGACAGAACATGGGTCAACACCTTGATGTAAAATTTGTTCTAGTTCATCCTATGTAGCAGTTGCAC  
CAGTCAAATCTTCCCCACCCTTCTGTTCTGCTGTTTCATCTCCTCTATGGCAATCAAAGTGGTCA  
AAGCGTTCCA

ACGCGTACGCGGCCGCTCGAG - GFP Tag - GTTTAA

**Protein Sequence:** >RG213888 representing NM\_001001396  
 Red=Cloning site Green=Tags(s)

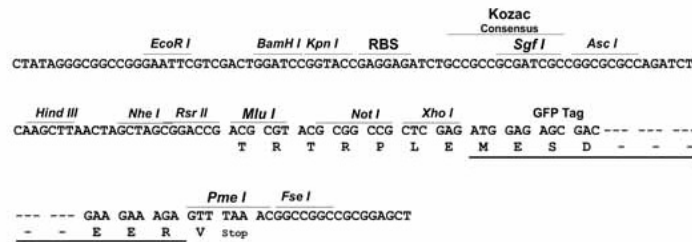
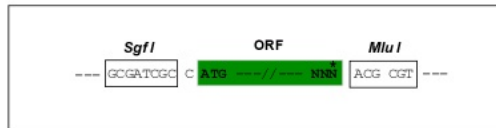
```

MTNPSTRVLPANSMAESREGDFGCTVMELRKLMELELRSDALTQINVHYGGVQNLCSRLKTSPEVGLSGNP
ADLEKRRQVFVGHNVIPPKPKTFLELVWEALQDVTLLIILEIAAIIISLVSFYRPAGEENELCGQVATTPE
DENAQAQAGWIEGAAILFSVIIIVLVTAFNDSKEKQFRGLQCRIEQEQKFSIIRNGQLIQLPVAEIVVGD
IAQVYKGDLLPADGILIQNDLKIDESSLTGESDHVKKSLDKDPMMLSGTHVMEGSGRMVVTAVGVNSQT
GIILTLGLVNEDEGEKKGKGGKQGVNPNRNKAKTQDGVLEIQPLNSQEGIDNEEKDKKAVKVPKKEKS
VLQGKLRVAVQIGKAGLLMSALTVFVILILYFVIDNFVINRRPWLPNECTPIYIQYFVKFFIIGITVLVVA
VPEGLPLAVTISLAYSVKMMKDNLLVRHLDACETMGNATAICSDKTGTLTMNRMTVVQAYIGGIHYRQI
PSPDVFLPKVLDLIVNGISINSAYTSKILPPEKEGGLPRQVGNKTECALLGFVTDLKQDYQAVRNEVPPE
KLYKVVTFNSVRKSMSTVIRNPNNGGFRMYSKGAIEILRKCNRILDRKGEAVPFKNKDRDDMVRTVIEPM
ACDGLRTICIAAYRDFDTEPSWDNENEILTELTCIAVVGIEDPVRPEVPDAIAKCKQAGITVRMVTGDNI
NTARAIATKCGILTPGDFFLCLEKGFNRLIRNEKGEVEQEKLDKIWPKLRVLARSSPTDKHTLVKGIID
STVGEHRQVVAVTGDGTNDGPALKKADVGFAMGIAGTDVAKEASDIILTDNFTSIVKAVMWGRNVYDSI
SKFLQFQLTVNVVAVIVAFVAGTQDSTPLKAVQMLWVNLIMDTFASLALATEPPTESLLKRRPYGRNKP
LISRTMMKNILGHAFYQLIVIFILVFAKEKFFDIDSGRKAPLHSPPSQHYTIVFNTFVLMQLFNEINSRK
IHGEKNVFSGIYRNIIIFCSVVLGTFICQIFIVEFGGKPFCTSLSSQLWCLFIFIGELLLWQGFISAIP
TRSLKFLKEAGHGTTKEEITKDAEGLDEIDHAEMELRRGQILWFRGLNRIQTQIDVINTFTQGASFKGVL
RRQNMGQHLVDKLVPSVSSVAVAVPKSSPTTSPVAVSSPPMGNQSGQSV
  
```

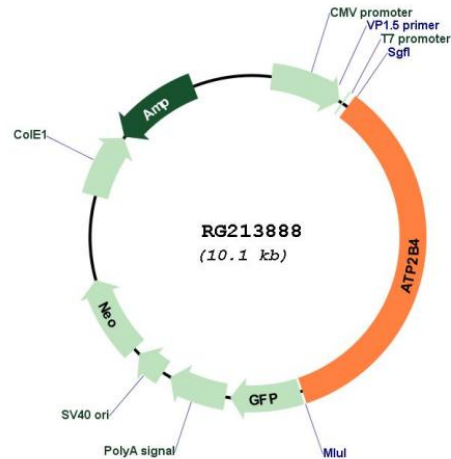
TRTRPLE - GFP Tag - V

**Restriction Sites:** SgfI-MluI  
**Cloning Scheme:**

Cloning sites used for ORF Shuttling:



## Plasmid Map:



ACCN: NM\_001001396

ORF Size: 3510 bp

OTI Disclaimer: The molecular sequence of this clone aligns with the gene accession number as a point of reference only. However, individual transcript sequences of the same gene can differ through naturally occurring variations (e.g. polymorphisms), each with its own valid existence. This clone is substantially in agreement with the reference, but a complete review of all prevailing variants is recommended prior to use. [More info](#)

OTI Annotation: This clone was engineered to express the complete ORF with an expression tag. Expression varies depending on the nature of the gene.

Components: The ORF clone is ion-exchange column purified and shipped in a 2D barcoded Matrix tube containing 10ug of transfection-ready, dried plasmid DNA (reconstitute with 100 ul of water).

Reconstitution Method:

1. Centrifuge at 5,000xg for 5min.
2. Carefully open the tube and add 100ul of sterile water to dissolve the DNA.
3. Close the tube and incubate for 10 minutes at room temperature.
4. Briefly vortex the tube and then do a quick spin (less than 5000xg) to concentrate the liquid at the bottom.
5. Store the suspended plasmid at -20°C. The DNA is stable for at least one year from date of shipping when stored at -20°C.

RefSeq: [NM\\_001001396.2](#), [NP\\_001001396.1](#)

RefSeq Size: 8931 bp

RefSeq ORF: 3513 bp

Locus ID: 493

UniProt ID: [P23634](#)

Cytogenetics: 1q32.1

**Protein Families:** Druggable Genome, Transmembrane

**Protein Pathways:** Calcium signaling pathway

**Gene Summary:** The protein encoded by this gene belongs to the family of P-type primary ion transport ATPases characterized by the formation of an aspartyl phosphate intermediate during the reaction cycle. These enzymes remove bivalent calcium ions from eukaryotic cells against very large concentration gradients and play a critical role in intracellular calcium homeostasis. The mammalian plasma membrane calcium ATPase isoforms are encoded by at least four separate genes and the diversity of these enzymes is further increased by alternative splicing of transcripts. The expression of different isoforms and splice variants is regulated in a developmental, tissue- and cell type-specific manner, suggesting that these pumps are functionally adapted to the physiological needs of particular cells and tissues. This gene encodes the plasma membrane calcium ATPase isoform 4. Alternatively spliced transcript variants encoding different isoforms have been identified. [provided by RefSeq, Jul 2008]