

## Product datasheet for **RG213843**

### Nesprin 2 (SYNE2) (NM\_182910) Human Tagged ORF Clone

#### Product data:

Product Type:	Expression Plasmids
Product Name:	Nesprin 2 (SYNE2) (NM_182910) Human Tagged ORF Clone
Tag:	TurboGFP
Symbol:	Nesprin 2
Synonyms:	EDMD5; KASH2; Nesp2; Nesprin-2; NUA; NUANCE; SYNE-2; TROPH
Mammalian Cell Selection:	Neomycin
Vector:	pCMV6-AC-GFP (PS100010)
E. coli Selection:	Ampicillin (100 ug/mL)
ORF Nucleotide Sequence:	>RG213843 representing NM_182910 Red=Cloning site Blue=ORF Green=Tags(s)

TTTTGTAATACGACTCACTATAGGGCGCCGGGAATTCGTCGACTGGATCCGGTACCGAGGAGATCTGCC  
GCC**CGATCGCC**

ATGGAAGGTGACAGGAATGTTCCACCTGTTCCCCCTGCGTCCAGCACCCCTTATAAACCACCCATATGGAA  
AGCTACTATTACCTCCAGGCACGGATGGTGGCAAAGAAGGCCCGGAGTCTGAATGGCAACCCACAGCA  
GGAAGACGGGGGACTGGCCGGTATCACAGAGCAGCAGTCAGGTGCCTTCGACAGATGGGAGATGATTCAA  
GCACAGGAGCTTACAATAAGCTCAAAAATAAACAAAATTTGCAACAGCTGAACTCTGATATCAGCGCCA  
TCACTACTTGGCTGAAAAAACTGAAGCAGAGCTGGAAATGTTAAAGATGGCAAAGCCTCCCTCTGATAT  
CCAGGAAATAGAACTGAGAGTGAAGAGACTGCAGGAGATACTGAAAGCCTTTGACACTTACAAGGCATTA  
GTGGTCTCTGTCAACGTGAGCAGCAAGGAATTTCTGCAAACCGAGAGCCCGAATCCACAGAGCTCCAAA  
GTAGACTCCGCCAGCTGAGCCTGCTCTGGGAAGCAGCACAGGGCGCAGTGGACAGCTGGAGAGGGGGCTT  
ACGACAGTCGCTCATGCAGTGCCAGGGCTTAAGACACGGCCGCGCTCTGATGTGTTGTTTTTAAGGAC  
TTCCACCAGTTGAGTCAAAATCTGCTGCTGTGGTTAGCGAGTGCCAAGAACCGGAGGCAGAAGGCTCATG  
TCACCGATCCAAAGGCAGACCCCGGGCTCTCCTAGAGTGTGGAGGGAATAATGCAACTGGAAAAGGA  
GCTGGTAGAACGTCAACCTCAAGTGGACATGTTACAGGAGATTTCAAACAGCCTTCTCATTAAAGGGACAT  
GGAGAAGACTGTATTGAAGCTGAAGAAAAGGTGCATGTTATTGAGAAGAACTCAAACAGTTACGGGAGC  
AAGTGTCCCAAGATTTAATGGCCTTGACAGGAACCCAGAACCCAGCCTCACCCCTGCCAGCTTCGACGA  
GGTAGACTCGGGGACCAGCCTCCTGCAACATCCGTGCCAGCTCCCCGAGCAAAGTTCAGAGCAGTGAGA  
ACTACAGAAGGCGAGGAGGAGACAGAGAGCAGGGTCCCCGGCAGCACACGGCCACAGCGCTCCTTCTCT  
CAAGGGTGGTCCGGGCAGCCCTACCCCTGCAGCTGCTCCTCTGCTGCTGCTGCTGCTGCTGCTGCTGCT  
GCCCTCTCCGAAGAAGACTACAGCTGCACTCAGGCCAACAACTTGGCCCGTCTTTTACCCCATGCTG  
AGGTACACCAATGGGCCACCCCCACA

**ACGCGT**ACGCGGCCGCTCGAG - GFP Tag - GTTTAA



[View online »](#)

**Protein Sequence:** >RG213843 representing NM\_182910  
 Red=Cloning site Green=Tags(s)

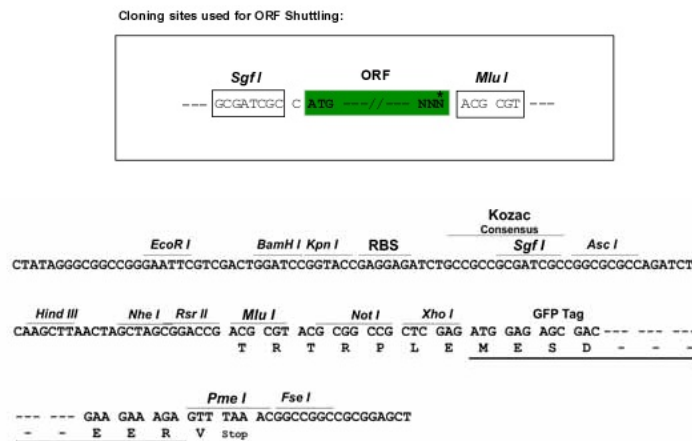
MEGDRNVPPVPPASSTPYKPPYGKLLLPPGTDGGKEGPRVLNGNPQQEDGGLAGITEQQSGAFDRWEMIQ  
 AQELHNKLIKQNLQQLNSDISAITTWLKKTEAELEMLKMAKPPSDIQEIELRVKRLQEILKAFDTYKAL  
 VVSVNVSSKEFLQTESPESTELQSRLRQLSLLWEAAQGAVDMSWRGGLRQSLMQCQGSKTRPRSDVLFKQ  
 FHQLSQNLLLWLASAKNRRRQKAHVTDPKADPRALLECRRELMQLEKELVERQPQVDMLQEISNSLLIKGH  
 GEDCIEAEKVKVHIEKCLKQLREQVSQDLMALQGTQNPASPLPSFDEVDSDGQPPATSVPAAPRAKFRVR  
 TTEGEEETESRVPGSTRPQRSFLSRVRAALPLQLLLLLLLLLLACLPSSEEDYSCTQANNFARFYPML  
 RYTNGPPPT

TRTRPLE - GFP Tag - V

**Chromatograms:** [https://cdn.origene.com/chromatograms/ja3710\\_b06.zip](https://cdn.origene.com/chromatograms/ja3710_b06.zip)

**Restriction Sites:** SgfI-MluI

**Cloning Scheme:**



**ACCN:** NM\_182910

**ORF Size:** 1287 bp

**OTI Disclaimer:** The molecular sequence of this clone aligns with the gene accession number as a point of reference only. However, individual transcript sequences of the same gene can differ through naturally occurring variations (e.g. polymorphisms), each with its own valid existence. This clone is substantially in agreement with the reference, but a complete review of all prevailing variants is recommended prior to use. [More info](#)

**OTI Annotation:** This clone was engineered to express the complete ORF with an expression tag. Expression varies depending on the nature of the gene.

**Components:** The ORF clone is ion-exchange column purified and shipped in a 2D barcoded Matrix tube containing 10ug of transfection-ready, dried plasmid DNA (reconstitute with 100 ul of water).

**Reconstitution Method:**

1. Centrifuge at 5,000xg for 5min.
2. Carefully open the tube and add 100ul of sterile water to dissolve the DNA.
3. Close the tube and incubate for 10 minutes at room temperature.
4. Briefly vortex the tube and then do a quick spin (less than 5000xg) to concentrate the liquid at the bottom.
5. Store the suspended plasmid at -20°C. The DNA is stable for at least one year from date of shipping when stored at -20°C.

**RefSeq:** [NM\\_182910.2](#), [NP\\_878914.1](#)

**RefSeq Size:** 3103 bp

**RefSeq ORF:** 1290 bp

**Locus ID:** 23224

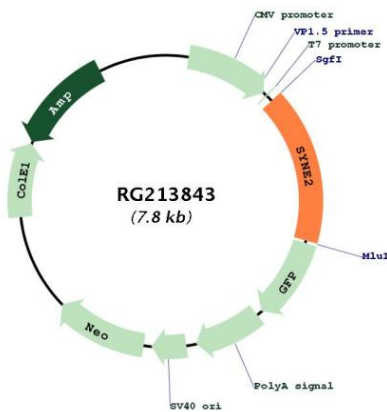
**UniProt ID:** [Q8WXH0](#)

**Cytogenetics:** 14q23.2

**Protein Families:** Druggable Genome, Transcription Factors

**Gene Summary:** The protein encoded by this gene is a nuclear outer membrane protein that binds cytoplasmic F-actin. This binding tethers the nucleus to the cytoskeleton and aids in the maintenance of the structural integrity of the nucleus. Several transcript variants encoding different isoforms have been found for this gene. [provided by RefSeq, Mar 2009]

### Product images:



Circular map for RG213843