

## Product datasheet for **RG213841**

### SDHC (NM\_001035513) Human Tagged ORF Clone

#### Product data:

**Product Type:** Expression Plasmids  
**Product Name:** SDHC (NM\_001035513) Human Tagged ORF Clone  
**Tag:** TurboGFP  
**Symbol:** SDHC  
**Synonyms:** CYB560; CYBL; PGL3; QPS1; SDH3  
**Mammalian Cell Selection:** Neomycin  
**Vector:** pCMV6-AC-GFP (PS100010)  
**E. coli Selection:** Ampicillin (100 ug/mL)  
**ORF Nucleotide Sequence:** >RG213841 representing NM\_001035513  
Red=Cloning site Blue=ORF Green=Tags(s)

TTTTGTAATACGACTCACTATAGGGCGGCCGGAATTCGTCGACTGGATCCGGTACCGAGGAGATCTGCC  
GCC**CGGATCGCC**

ATGGCTGCGCTGTTGCTGAGTTGGTCTCTTCCCATGGCGATGTCCATCTGCCACCGTGGCACTGGTATTG  
CTTTGAGTGCAGGGTCTCTCTTTTGGCATGTCGGCCCTGTTACTCCCTGGAACTTTGAGTCTTATTT  
GGAACTTGTGAAGTCCCTGTGTCTGGGGCCAGCACTGATCCACACAGCTAAGTTTGCCTGTCTTCCCT  
CTCATGTATCATACCTGGAATGGGATCCGACACTTGATGTGGGACCTAGGAAAAGGCCTGAAGATTCCCC  
AGCTATACCACTGGAGTGGTGTCTGCTGTTCTTACTGTGTTGCTCTATGGGCTGGCAGCCATG

**ACGCGT**ACGCGGCCGCTCGAG - GFP Tag - GTTTAA

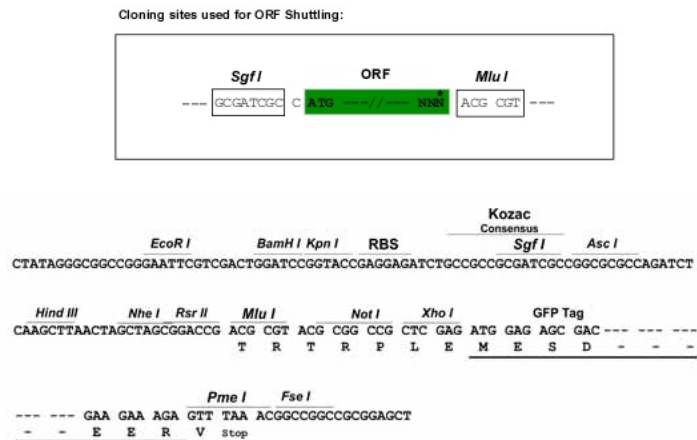
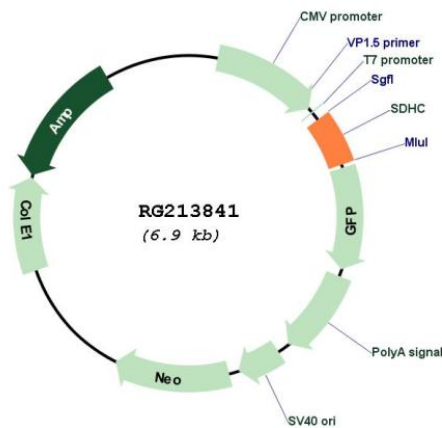
**Protein Sequence:** >RG213841 representing NM\_001035513  
Red=Cloning site Green=Tags(s)  
MAALLLSWSLPMAMSICHRGTGIALSAGVSLFGMSALLLPGNFESYLELVKSLCLGPALIHAKFALVFP  
LMYHTWNGIRHLMWDLGKGLKIPQLYQSGVVVLVLTVLSSMGLAAM

**TRTRPLE** - GFP Tag - V

**Restriction Sites:** Sgfl-MluI



[View online »](#)

**Cloning Scheme:**

**Plasmid Map:**

**ACCN:**

NM\_001035513

**ORF Size:**

348 bp

**OTI Disclaimer:**

The molecular sequence of this clone aligns with the gene accession number as a point of reference only. However, individual transcript sequences of the same gene can differ through naturally occurring variations (e.g. polymorphisms), each with its own valid existence. This clone is substantially in agreement with the reference, but a complete review of all prevailing variants is recommended prior to use. [More info](#)

<b>OTI Annotation:</b>	This clone was engineered to express the complete ORF with an expression tag. Expression varies depending on the nature of the gene.
<b>Components:</b>	The ORF clone is ion-exchange column purified and shipped in a 2D barcoded Matrix tube containing 10ug of transfection-ready, dried plasmid DNA (reconstitute with 100 ul of water).
<b>Reconstitution Method:</b>	<ol style="list-style-type: none"><li>1. Centrifuge at 5,000xg for 5min.</li><li>2. Carefully open the tube and add 100ul of sterile water to dissolve the DNA.</li><li>3. Close the tube and incubate for 10 minutes at room temperature.</li><li>4. Briefly vortex the tube and then do a quick spin (less than 5000xg) to concentrate the liquid at the bottom.</li><li>5. Store the suspended plasmid at -20°C. The DNA is stable for at least one year from date of shipping when stored at -20°C.</li></ol>
<b>RefSeq:</b>	<a href="#">NM_001035513.2</a>
<b>RefSeq Size:</b>	2699 bp
<b>RefSeq ORF:</b>	351 bp
<b>Locus ID:</b>	6391
<b>UniProt ID:</b>	<a href="#">Q99643</a>
<b>Cytogenetics:</b>	1q23.3
<b>Protein Families:</b>	Druggable Genome, Transmembrane
<b>Protein Pathways:</b>	Alzheimer's disease, Citrate cycle (TCA cycle), Huntington's disease, Metabolic pathways, Oxidative phosphorylation, Parkinson's disease
<b>Gene Summary:</b>	This gene encodes one of four nuclear-encoded subunits that comprise succinate dehydrogenase, also known as mitochondrial complex II, a key enzyme complex of the tricarboxylic acid cycle and aerobic respiratory chains of mitochondria. The encoded protein is one of two integral membrane proteins that anchor other subunits of the complex, which form the catalytic core, to the inner mitochondrial membrane. There are several related pseudogenes for this gene on different chromosomes. Mutations in this gene have been associated with paragangliomas. Alternatively spliced transcript variants have been described. [provided by RefSeq, May 2013]