

Product datasheet for **RG213821**

EPB4IL2 (EPB41L2) (NM_001431) Human Tagged ORF Clone

Product data:

Product Type:	Expression Plasmids
Product Name:	EPB4IL2 (EPB41L2) (NM_001431) Human Tagged ORF Clone
Tag:	TurboGFP
Symbol:	EPB4IL2
Synonyms:	4.1-G; 4.1G
Mammalian Cell Selection:	Neomycin
Vector:	pCMV6-AC-GFP (PS100010)
E. coli Selection:	Ampicillin (100 ug/mL)
ORF Nucleotide Sequence:	>RG213821 representing NM_001431 Red=Cloning site Blue=ORF Green=Tags(s)

TTTTGTAATACGACTCACTATAGGGCGGCCGGAATTCGTCGACTGGATCCGGTACCGAGGAGATCTGCC
GCC**CGATCGCC**

ATGACTACTGAAGTAGGCTCTGTGTCTGAAGTGAAGAAGGACTCTAGCCAGTTAGGAACAGATGCAACCA
AGGAAAAACCTAAAGAAGTAGCAGAAAAATCAGCAGAATCAGTCTCCGATCCAGAGGAGGAAAAAGTTCC
CCAGCCACCTCTGCAGCTGAAAGCCAAAGTAGTCTACGCCGCCAGAAGAGAGAGAAGGAAACATCGGAG
AGCAGGGGTATTCTCGTTTCATACCGCCATGGCTTAAGAAGCAAAGTCAATACCTTAGTAGTGGCCA
AAGATGGAGGAGATAAAAAAGAGCCTACCCAAGCTGTTGTTGAAGAACAGGTCTTAGATAAAGAGGAACC
CCTTCCAGAAGAACAGAGACAGGCTAAGGGTGATGCTGAAGAAATGGCTCAGAAGAAACAAGAGATTA
GTTGAAGTCAAGGAAGAAAAACCTCAGTGAGCAAGGAAGAAAAACCTCAGTGAGCAAAGTGGAGATGC
AGCCTACTGAATTAGTAAGTAAGGAGAGAGAAGAGAAGGTAAGAAACACAGGAAGACAAATTAGAAGG
AGGAGCAGCAAAAAGGGAGACCAAGGAAGTGCAGACCAATGAGCTGAAAGCAGAGAAGGCATCTCAAAA
GTCACCAAGAAGACAAAACCTGTCCAGTGTAAAGTACCCCTTTAGATGGCACCGAATACAGCTGTGACC
TGGAGAAACATGCCAAGGGACAAGTGTATTTGACAAAGTGTGTGAACACCTCAATCTCTTGAGAAAGA
CTACTTTGGACTTTTGTTCAGGAAAGCCCTGAGCAGAAAAACTGGTTAGATCCTGCTAAGAAAATAAG
AGACAAGTGAAGAACTTCCATGGCTATTCACCTTTAATGTGAAGTTTATCCTCCTGATCCTTCTCAAT
TGACTGAAGATATCACCAGATACTTCTGTGCCTTCAGCTCCGGCAGGACATTGCCTCTGGCCGCCTGCC
CTGCTCTTTTGTGACTCATGCTCTCCTGGGATCCTACACCCTGCAGGCTGAACTTGGTACTATGACCCA
GAAGAACATGGCAGCATCGACCTCAGTGAATTCAGTTTGCCCTACTCAGACTAAGGAGCTGGAAGAGA
AGGTGGCAGAGCTGCACAAAACCCACAGGGGCTTATCGCCAGCACAAGCTGATCCAGTTCTTAGAAAA
TGCAAAGAGGCTTTCCATGTATGGTGTGACCTACATCATGCCAAGGACTCAGAAGGTGTGGACATCAAG
CTGGCGTGTGTGCTAATGGACTTCTCATTACAAGACAGACTGCGAATCAATCGTTTTGCTTGGCCGA
AAATCTTAAAAATTTCTATAAACGCAGTAACTTCTACATTAAGTCAAGCCGACAGCTGGAACAGTT
TGAGAGTACCATTGGATTCAAACGCCAACCCGGGCAGCGAAAAGACTATGGAAGTGTGCGTGGAG



[View online »](#)

CATCATACTTTCTACAGGCTTGTTCCTCCAGAGCAGCCACCAAAAGCCAAGTTCCTGACCTGGGGTCCA
 AATTTTCGCTATAGTGGCCGACCCAAGCACAGACCCGCCAGGCCAGCACCTCATAGATAGGCCAGCACC
 ACACCTTTGAGCGCACTTCTAGTAAACGGGTCTCCAGGAGTCTAGATGGAGCTCCGATTGGTGTATGGAC
 CAAAGTCTTATGAAGGATTTTCTGGCGCTGCTGGGGAGATTTCAGCCTATGGACCTGGACTTGTGACGA
 TTGCCGTGGTACAAGATGGGGACGGCAGGAGGGAAGTGAAGCCCAACTAAAGCCCCACATTTGCAGCT
 CATTGAAGGAAAGAAAAATTCCTTGAGAGTAGAAGGGGATAATATTTATGTCAGACATAGCAATTTAATG
 TTGGAGAACTGGATAAGGCCAGGAGGACATACTGAAACATCAGGCTAGCATTAGTGAACCTCAAGCGCA
 ATTTTATGGAATCCACACCTGAGCCGCGCCTAATGAATGGGAAAAACGACGTATCACACCTCTGTCCCT
 ACAGACACAAGGGAGTTCACATGAGACTCTGAATATAGTGGAGGAGAAGAAGCGGGCAGAGGTTGGGAAA
 GACGAAAGAGTAATCACAGAAGAAATGAATGGTAAAGAGATATCACCTGGGAGTGGTCTGGGGAGATTC
 GTAAGGTGGAGCCTGTGACACAAAAAGACTCCACCTCCCTGTCTTCTGAGAGCAGCAGCAGCAGCAGTGA
 GAGTGAGGAGGAAGACGTGGGAGAGTACCGTCCCCACCACCGAGTGACCGAGGGCACCATCAGGGAGGAA
 CAGGAGTATGAAGAAGAGGTGGAGGAAGAACCCTCCCGCCGAGCAAGGTAGTAGAGGGGAGGAAGCAG
 TGCCCGAAGCCAGCCAGTACACAAGCAGGTGCCAGTGAATCACAGTAGAAACAGTATCCAGGAAAA
 TGTAGGTGCCAAAAGATACCCGGAGAGAAGAGTGTACACGAAGCGCTCTTAAGCAAGACATGGGAGAA
 GAAGCAGAGGAAGAGCCACAGAAAGTTAACGGAGAGGTGTCCCATGTTGACATTGATGTTTTGCCACAAA
 TTATTTGTTGTTTCCAGAGCCACCAGTGGTAAAAACAGAGATGGTAACAATTTCTGATGCCTCACAAAGGAC
 AGAAATCTCCACCAAGGAAGTCCCATTGTCCAACTGAGACAAAACCATCACATATGAGTCTCCACAG
 ATTGATGGCGGGGCTGGTGGTGATTCCGGCACGTTACTGACCGCACAAACCATCACATCTGAGTCCGTGT
 CAACAACGACAACCACACACATCAACAAGACTGTAAAAGTGGAAATTTCTGAAACAAGAATTGAGAAACG
 CATTGTGATCACAGGAGATGGAGATTTGATCATGACCAGGCACTGGCTCAGGCGATCAGGGAAGCCAGA
 GAGCAGCACCCCTGACATGTCGGTACAAGAGTGGTGGTACACAAAGAAACAGAGTTGGCTGAGGAAGGGG
 AAGAT

ACGCGTACGCGGCCGCTCGAG – GFP Tag – GTTTAA

Protein Sequence:

>RG213821 representing NM_001431
 Red=Cloning site Green=Tags(s)

MTTEVGSVSEVKKDSSQLGTDATKEKPKEVAENQQNQSSDPEEEKGSQPPPAAESQSSLRRQKREKETSE
 SRGISRFIPPWLKKQSYTLVVAKDGGDKKEPTQAVVEEQVLDKEEPLPEEQRQAKGDAEEMAQKKQEIK
 VEVKKEKPSVSKEEKPSVSKVEMQPTELVSKEREKVKETQEDKLEGGAAKRETKEVQTNELKAEKASQK
 VTKKTKTVQCKVTLLDGTEYSCDLEKHAKGQVLFDKVCEHLNLEKDYFLLFQESPEQKNWLDPAKEIK
 RQLRNLPLWFTFNKVFYPPDPSQLTEDI TRYFLCLQLRQDIASGRLPCSFVTHALLGSYTLQAE LGDYDP
 EEHGSIDLSEFQFAPTQTKLEEKVAELHKTHRGLSPAQADSQFLENAKRLSMYGVDLHHA KDSEGV DIK
 LGVCANGLLIYKDRLRINRFAWPKILKISYKRSNFYIKVRPAELEQFESTIGFKLPNHRAAKRLWKVCVE
 HHTFYRLVSPEQPPKAKFLTLGSKFRYSGR TQAQTRQASTLIDRPAPHFERTSSKRVSRLD GAPIGVMD
 QSLMKDFPGAAGEISAYGPGLVSI AVVQDGDGRREVRSPTKAPHLQLIEGKKNL RVEGDNIYVRHSNLM
 LEELDKAQEDILKHQASISELKRNFMESTPEPRPNEWKRRITPLSLQTQGSSETLNI VEEKKRAEVGK
 DERVITEEMNGKEISPGSGPGEIRKVEPV TQKDSTLSSESSSSSSSEEEEDVGEYRPHHRVTEGTIREE
 QEYEEEEVEEPRPAAKVVEREEAVPEASPV TQAGASVITVETVIQENVGAQKIPGEKSVHEGALKQDMGE
 EAEEEEPQKVNGEVSHVDIDVLPQIICCSEPPVVKTEMVTISDASQRTEISTKEVP IVQTETKITYESPQ
 IDGGAGGDSGTLT AQTITSESVSTTTTHITKT VKGGISETRIEKRIVITGDGDIDHDQALAQAI REAR
 EQHPDMSVTRVVHKETELAE EGED

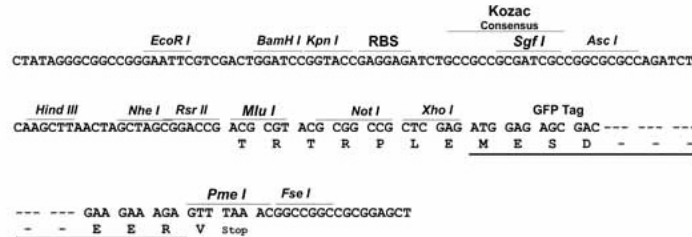
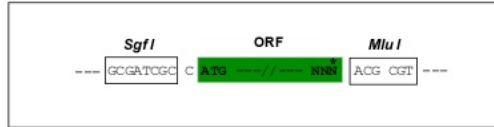
TRTRPLE – GFP Tag – V

Restriction Sites:

Sgfl-MluI

Cloning Scheme:

Cloning sites used for ORF Shutting:


ACCN: NM_001431

ORF Size: 3015 bp

OTI Disclaimer: The molecular sequence of this clone aligns with the gene accession number as a point of reference only. However, individual transcript sequences of the same gene can differ through naturally occurring variations (e.g. polymorphisms), each with its own valid existence. This clone is substantially in agreement with the reference, but a complete review of all prevailing variants is recommended prior to use. [More info](#)
OTI Annotation: This clone was engineered to express the complete ORF with an expression tag. Expression varies depending on the nature of the gene.

Components: The ORF clone is ion-exchange column purified and shipped in a 2D barcoded Matrix tube containing 10ug of transfection-ready, dried plasmid DNA (reconstitute with 100 ul of water).

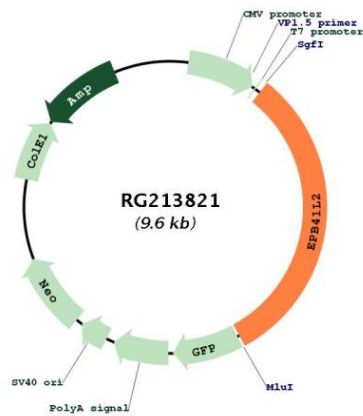
Reconstitution Method:

1. Centrifuge at 5,000xg for 5min.
2. Carefully open the tube and add 100ul of sterile water to dissolve the DNA.
3. Close the tube and incubate for 10 minutes at room temperature.
4. Briefly vortex the tube and then do a quick spin (less than 5000xg) to concentrate the liquid at the bottom.
5. Store the suspended plasmid at -20°C. The DNA is stable for at least one year from date of shipping when stored at -20°C.

RefSeq: [NM_001431.4](#)
RefSeq Size: 4336 bp

RefSeq ORF:	3018 bp
Locus ID:	2037
UniProt ID:	<u>O43491</u>
Cytogenetics:	6q23.1-q23.2
Domains:	B41, SAB
Protein Pathways:	Tight junction
Gene Summary:	Required for dynein-dynactin complex and NUMA1 recruitment at the mitotic cell cortex during anaphase (PubMed:23870127).[UniProtKB/Swiss-Prot Function]

Product images:



Circular map for RG213821