

Product datasheet for **RG213788**

PDE4C (NM_000923) Human Tagged ORF Clone

Product data:

Product Type:	Expression Plasmids
Product Name:	PDE4C (NM_000923) Human Tagged ORF Clone
Tag:	TurboGFP
Symbol:	PDE4C
Synonyms:	DPDE1; PDE21
Mammalian Cell Selection:	Neomycin
Vector:	pCMV6-AC-GFP (PS100010)
E. coli Selection:	Ampicillin (100 ug/mL)



[View online »](#)

ORF Nucleotide
Sequence:

>RG213788 representing NM_000923
 Red=Cloning site Blue=ORF Green=Tags(s)

TTTTGTAATACGACTCACTATAGGGCGGCCGGAATTCGTCGACTGGATCCGGTACCGAGGAGATCTGCC
 GCCGCGATCGCC

ATGGAGAACCTGGGGTTCGGCGAAGGGGACAGAGCTTGCAGCAGTTGAGTCGCTCTCGCGGCCCCACA
 GCATGACCAGAGCCCGAAGCACCTGTGGCGGCAACCCGCGGCCCATCCGCATCCAACAGCGTTCTA
 TTCGGATCCGGACAAGTCCGCGGGCTGCGCGAGAGGGACCTGAGCCCGCGGCCGGAGCTCAGGAAGTCG
 CGGCTCTCCTGGCCCGTTTCTCCTGCAGGCGCTTTGACCTGGAAAATGGGCTCTCGTGTGGGAGGAGGG
 CCCTGGACCCCTAGTCCAGCCCTGGCTGGGCCGATTATGCAGGCTCCAGTCCCGCACAGCCAGCGGGC
 CGAGTCTTCTGTACCGCTCAGATAGCGACTATGAACCTCGCCCAAGGCCATGTCTCGGAACCTCTCT
 GTGGCCAGCGACCTACATGGAGAGGACATGATTGTGACGCCCTTGGCCAGGCTCGGCCAGTCTGCGGA
 CCGTTCGGAGCAACGTGGCGGCCCTTGGCCGCCAGCAATGCCTAGGAGCAGCCAAGCAGGGACCCGTCGG
 AAACCTTTCATCCAGCAATCAGCTCCCTCCTGCAGAGGACACGGGGCAGAAGCTGGCATTGGAGACGCTA
 GACGAGCTGGACTGGTGCCTGGATCAGTTGGAGACGCTGCAGACCCGGCCTCGGTGGGGGAGATGGCCT
 CCAACAAGTTCAAGCGGATCCTGAACCGGGAGTTGACCCACCTGTCCGAAACAGCCGCTCCGGGAACCA
 GGTGTCCGAGTACATCTCCCGGACCTTCTGGACCAGCAGACCGAGGTGGAGTGCCCAAGGTGACCGCT
 GAGGAGGCCCCACAGCCCATGTCCCGGATCAGTGGCCTACATGGGCTCTGCCACAGTCCAGCCTCTCT
 CAGCCACTGTCCCACGCTTTGGGGTCCAGACTGACCAGGAGGAGCAACTGGCCAAGGAGCTAGAAGACAC
 CAACAAGTGGGGACTTGATGTGTCAAGGTGGCGGAGCTAAGTGGGAACCGGCCCTCACAGCTATCATA
 TTCAGCATTTTTCAGGAGCGGGACCTGCTGAAGACATTCAGATCCAGCAGACACACTGGCCACCTACC
 TGCTGATGCTGGAAGTCACTACCACGCCAATGTGGCCTACCACAACAGCCTACATGCCCGCAGCTGGC
 CCAGTCCACGCATGTGCTGCTGGCTACGCCCGCCCTCGAGGCTGTGTTACAGACTTGGAAATCCTGGCT
 GCCCTCTTGAAGCGCCATCCACGACGTGGACCATCCTGGGGTCTCCAACAGTTTCTGATTAACACCA
 ACTCAGAGCTGGCGTTATGTACAACGACGCCTCGGTGCTGGAGAACCATCACCTGGCTGTGGGCTTCAA
 GCTGCTGCAGGCAGAGAAGTCCGATATCTTCCAGAACCTCAGCGCCAAGCAGCGACTGAGTCTGCGCAGG
 ATGGTCATTGACATGGTGTGGCCACAGACATGTCCAAACACATGAACCTCCTGGCCGACCTCAAGACCA
 TGGTGGAGACCAAGAAGGTGACAAGCCTCGGTGTCTCCTCCTGGACAATATCCGACCGAATCCAGGT
 CTTGCAGAACCTGGTGCCTGTGCTGATCTGAGCAACCCACCAAGCCGCTGCCCTGTACCGCCAGTGG
 ACGGACCCGATCATGGCCGAGTCTTCCAGCAGGGAGACCGCGAGCGTGAGTCGGCCCTGGACATCAGTC
 CCATGTGTGACAAGCATACGGCCTCAGTGGAGAAGTCCCAGGTGGGTTTCATTGACTACATTGCTACCC
 ACTGTGGGAGACTTGGGCTGACCTGGTCCACCCAGATGCACAGGACCTGTGGACACGCTGGAGGACAAT
 CGAGAGTGGTACCAGAGCAAGATCCCCGAAGTCCCTCAGACCTCACCACCCCGAGCGGGACGGCCCTG
 ACAGATTCAGTTTGAAGTACTCTGGAGGAGGCAGAGGAAGAGGATGAGGAGGAAGAAGAGGAGGGGGA
 AGAGACAGCTTTAGCCAAAGAGGCCTTGGAGTTGCCTGACACTGAACTCCTGTCCCTGAAGCCGGCCCA
 GACCCTGGGGACTTACCCTCGACAACCCAGAGGACT

ACGCGTACGCGGCCGCTCGAG - GFP Tag - GTTTAA

Protein Sequence: >RG213788 representing NM_000923
 Red=Cloning site Green=Tags(s)

MENLGVGEGAEACSRLSRSRGRHSMTRAPKHLWRQPRRPIRIQQRFYSDPKSAGCRELDLSPPELRKS
 RLSWPVSSCRFDLENGLSGRRALDPQSSPGLGRIMQAPVPHSQRRSFLYRSDSDYELSPKAMSRNSS
 VASDLHGEDMIIVTFFAQVLASLRTVRSNVAALARQOCLGAAKQGPVGNPSSSNQLPPAEDTGQKLALETL
 DELDWCLDQLETLQTRHSVGMASNKFKRILNRELTHLSETSRSGNQVSEYISRTFLDQQTEVELPKVTA
 EEAPQPMSRISGLHGLCHSASLSSATVPRFGVQTDQEEQLAKELEDTNKWGLDVFKVAELSGNRPLTAII
 FSIFQERDLLKTFQIPADTLATYLLMLEGHYHANVAYHNSLHAADVAQSTHVLLATPALEAVFTDLEILA
 ALFASAIHDVDHPGVSNQFLINTNSELALMYNDASVLENHHLAVGFKLLQAENCDFQNLQSAKQRLSLRR
 MYIDMVLATDMSKHMNLLADLKTVMETKKVTSLGVLLLDNYSRIQVLQNLVHCADLSNPTKPLPLYRQW
 TDRIMAEFFQQGDRERESGLDISPMCDKHTASVEKSQVGFIDYIAHPLWETWADLVHPDAQDLLDLEDN
 REWYQSKIPRSPDLTNPERDGPDRFQFELTLEAEEDDEEEEEEGEETALAKEALELPDELLSPEAGP
 DPGDLPLDNQRT

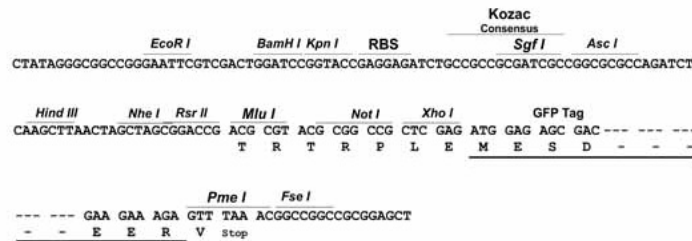
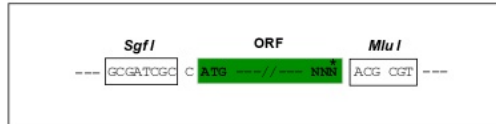
TRTRPLE - GFP Tag - V

Restriction Sites:

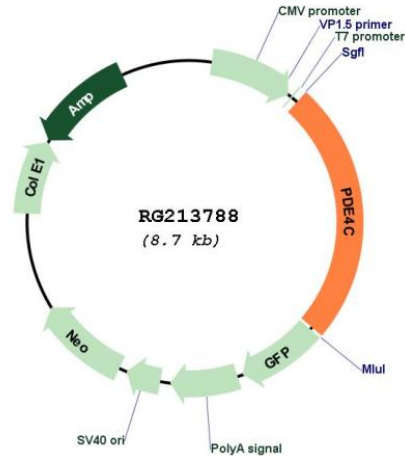
SgfI-MluI

Cloning Scheme:

Cloning sites used for ORF Shutting:



Plasmid Map:



ACCN: NM_000923

ORF Size: 2136 bp

OTI Disclaimer: The molecular sequence of this clone aligns with the gene accession number as a point of reference only. However, individual transcript sequences of the same gene can differ through naturally occurring variations (e.g. polymorphisms), each with its own valid existence. This clone is substantially in agreement with the reference, but a complete review of all prevailing variants is recommended prior to use. [More info](#)

OTI Annotation: This clone was engineered to express the complete ORF with an expression tag. Expression varies depending on the nature of the gene.

Components: The ORF clone is ion-exchange column purified and shipped in a 2D barcoded Matrix tube containing 10ug of transfection-ready, dried plasmid DNA (reconstitute with 100 ul of water).

Reconstitution Method:

1. Centrifuge at 5,000xg for 5min.
2. Carefully open the tube and add 100ul of sterile water to dissolve the DNA.
3. Close the tube and incubate for 10 minutes at room temperature.
4. Briefly vortex the tube and then do a quick spin (less than 5000xg) to concentrate the liquid at the bottom.
5. Store the suspended plasmid at -20°C. The DNA is stable for at least one year from date of shipping when stored at -20°C.

RefSeq: [NM_000923.5](#)

RefSeq Size: 2739 bp

RefSeq ORF: 2139 bp

Locus ID:	5143
UniProt ID:	Q08493
Cytogenetics:	19p13.11
Protein Families:	Druggable Genome
Protein Pathways:	Progesterone-mediated oocyte maturation, Purine metabolism
Gene Summary:	<p>The protein encoded by this gene belongs to the cyclic nucleotide phosphodiesterase (PDE) family, and PDE4 subfamily. This PDE hydrolyzes the second messenger, cAMP, which is a regulator and mediator of a number of cellular responses to extracellular signals. Thus, by regulating the cellular concentration of cAMP, this protein plays a key role in many important physiological processes. Alternatively spliced transcript variants encoding different isoforms have been described for this gene.[provided by RefSeq, Jul 2011]</p>