

Product datasheet for **RG213778**

BTBD7 (NM_001002860) Human Tagged ORF Clone

Product data:

| | |
|---------------------------|--|
| Product Type: | Expression Plasmids |
| Product Name: | BTBD7 (NM_001002860) Human Tagged ORF Clone |
| Tag: | TurboGFP |
| Symbol: | BTBD7 |
| Synonyms: | FUP1 |
| Mammalian Cell Selection: | Neomycin |
| Vector: | pCMV6-AC-GFP (PS100010) |
| E. coli Selection: | Ampicillin (100 ug/mL) |
| ORF Nucleotide Sequence: | >RG213778 representing NM_001002860 Red=Cloning site Blue=ORF Green=Tags(s) |

TTTTGTAATACGACTCACTATAGGGCGGCCGGAATTCGTCGACTGGATCCGGTACCGAGGAGATCTGCC
GCC**CGATCGCC**

ATGGGTGCTAATGCATCTAATTATCCTCATTCATGTTCCCGAGGGTAGGGGAAATTCACAGGCCAAC
AGACTTTTATAGGGACCTCATCTATTCTCAGCAAGGCTATGGTTGCGAATCAAAGTTGTATAGCCTTGA
CCATGGCCATGAGAAACCACAAGACAAAAAAGAGAACCTCTGGTCTTGCCACCCTCAAAAAGAAGTTT
ATTAAGCGTCGGAAATCTAATAGGTCTGCCGATCATGCCAAGCAGATGCGAGAATCCTCTCTGGGTGGG
ATGTTAGAGATGTCAATGCATTAGTGGAGGAATATGAGGGAACATCAGCATTAAAGGAGCTTTCTCTACA
AGCCAGTTTGGCTAGACCAGAAGCCCGGACATTGCAGAAAGATATGGCTGATCTTTATGAGTACAAGTAT
TGTAATGATGTAGACTTAATATTTCAAGAACTTGTTTTCTGTTTCATCGTGCCATTTTGGCAGCAAGGT
GTCCATTTTTTAAACACTGCTTTCTTCTCACCAGAGTATGGGGCAGAGATAATAATGGACATCAATAC
AGCTGGTATTGATATGCCCATGTTTTCTGCTTTGTTACACTACCTTTATACAGGAGAGTTTGAATGGAG
GACTCAAGGTTTCAAATGTCGATATCCTTGTTTCAGCTTAGTGAAGAATTTGGAACCAAAATCCCTTG
ATGTAGATATGCGTGGACTCTTTGATTACATGTGTTATTATGATGTCGTCCTTAGTTTTCTTCAGACTC
TGAAGTGGTTGAAGCTTTTGGTGGAAATCAGAAGTGTAGATGAAGAGCTCAAAGCCACAAGGCTGTT
ATTTCTGCACGGTCCCCATTTTTCGAAATTTATTACAAAGGAGGATACGAACTGGTGAAGAAATCACAG
ACCGAACTTTGAGGACTCCCAAGAATTATATTAGATGAGTCCATTATACCAAAAAAATATGCAACAGT
GATATTACACTGTATGTATACCGACGTGGTGGACCTCTGTTTTGCACTGTAGCCCTCTGTGGGGAGT
CTCAGTGAAGTTCAGGCTCTCGTCGAGGGAAGCCAAACATGACCAGGGCAGAAGAAGCCATGGAACTTT
ACCACATAGCACTGTTCTTGAATTTAACATGCTTGCAACAAGGCTGTGAGGATATCATTGCTGAGAGCAT
CTCATTAGATACCTTAATTGCCATCCTCAAGTGGAGTTCTCATCCATATGGCTCTAAATGGGTGCACCGA
CAAGCTTTACATTTCTCTGTGAGGAATTTCCAGGTCATGACTTCGGATGTTTTTATGAACTCAGCA
AAGACCATCTGCTTACTGCTATCCAGTCTGACTACCTACAGGCAAGTGAACAAGATATCCTTAAATATCT
GATTAATGGGGAGGCATCAGTTGATGAAAAGAATAGCAGATAGAGAGCCAACTTACTGAGTGGCACT



[View online »](#)

```
GCCCATAGTGTGAACAAAAGAGGTGTA AAAAGACGGGACCTGGACATGGAAGAGCTCAGAGAGATCCTTT
CTTCTCTTACCTTTTGTGCGAATTGAACACATCTTACCTATAAACAGTGAAGTCTTAAGTGATGCAAT
GAAAAGAGGCTTGATTAGTACTCCTCCATCAGATATGCTTCTACAACAGAAGGTGGGAAGTCAAATGCC
TGGTTACGGCAAAAAAATGCTGGCATCTATGTTCTGCTCCTGACTCTTCTCCTATGTGGAAGAAGCAA
AGTCAGTGCTAGATGAGATGATGGTGAACAAACGGATCTTGTGCGCTTGGCAATGGTTAGAATGTCCAA
TGTGCCAGACACGCTCTACATGGTCAATAATGCCGTGCCACAGTGTGTACATGATCAGCCACCAGCAG
ATCAGCAGCAACCAGTCAAGCCCTCCTTCAGTTGTAGCCAAACGAAATTCAGTTCCTCCTCCTCATTAT
TGAAAGACATGGTCAGACGACTGCAGGAAGTCCGCGCACACGGAGCAGGTGCAGAGGGCCTATGCCCTGAA
CTGCGGGGAAGGCGCCTGTACAGTATGAAATTCAGATTCGAGTGCTAAGAGAGTTTGGTCTTGAGAT
GCTGCTGCAGAGCTGTTGCAGAATCCTCACAAATCTTTCTGATGAACGTTTTGGGGATGAAAGTCCAC
TCTTGACAATGAGACAGCCTGGGAGATGTCGCGTAAACAGTACACCTCCTGCAGAAACCTGTTTACAGA
TCTGGACTCTTTTGTGGCCTCCATCCACCCTGCCCCCTCCACCACCTCCCTACCACCCCCAGCTACC
CCAATCCATAACCAACTCAAAGCAGGCTGGAAGCAAAGACCTCCAGTCAGCACCTTCACGTTCAATTTT
CTTATCCCTGTAATCATTGCTGTTCCACTCCAGAACAGCTCCTAAAGCTGGCCCTCCCCAGTCTACTT
GCCGAGTGTGAAAGCTGCACCGCTGATTGTACCAGCACTGCAGGACTGGGCAGACAGACGGTGGCTGCT
GCTGCCGCCACCACCCTCAACAGCAACAGCAGCAGCAGCAGCAGCATCTGAGAAGCAAGTGCGAACAC
AACCTGTGCTGAATGATCTGATGCCAGACATCGCGGTGGGTGTGTCCACACTGCTCAAGGACAGGAG
GCTTCCAGAGCTTGTGTAGACACAGAATTAAGCCAGTCAGTTTCTGAAGCAGGACCAGGGCCTCCCCAG
CATCTGTCGTGATTCCACAGAGACATACACACTTCTCGAAAAAACACACTAGAGCAAAAAACAG
ACACCAGAGAAAAACACAGGAATATCCGGATTTCTATGACTTCTCAAATGCTGCTTGCAGACCTTCTAC
TCCTGCTCTCAGCAGACGACCCCTTCCCTTCGCAAGGTGGATATTTGGTCCCGATCTGTACAGCCAC
AATAAGGCATACCAAGTGGCTTAAAGTCAGCCTACCTACCTGGTCAGACGTCCTCAAAAAACAGGAAG
AAGTAGGAGAGAATATCCACTTCCCTGACGGGCATCTACACAGACAAAAGAATGAGCCGATACACAT
GGATGTCGTTGAGCAACCTCCCCAGCGGTACAGCTTTCCTTTGGCAGCCCCAGAAAAATGCTAGTACCGGT
CCAGCCCATGTCAGGGGACGAACTGCAGTAGAAACTGACTTGACTTTTGGGCTGACTCCTAACAGACCTT
CACTTTCTGCATGTAGCTCTGAAGCTCCCGAAGAGAGATCCGGTAGAAGACTGGCAGACAGTGAATCCCT
GGGCCATGGAGCTCAGAGAAATACAGATTTGGAAGGGAAGATTCAATAAGCAGAGGAAGGAGGTACCA
AGCAAGCCGGACTTCTCTACAAAAAGTCTGCCCTC
```

ACGCGTACGCGGCCGCTCGAG - GFP Tag - GTTTAA

Protein Sequence:

>RG213778 representing NM_001002860
 Red=Cloning site Green=Tags(s)

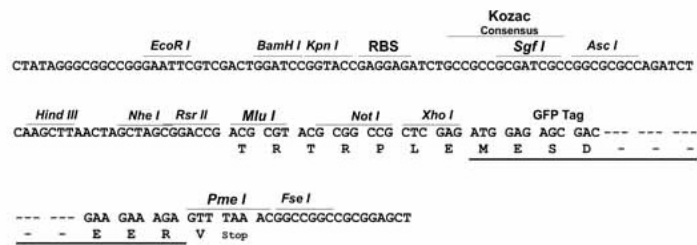
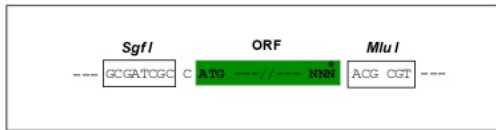
```
MGANASNYPHSCSPRVGGNSQAQQTFIGTSSYSQQGYGCESKLYSLDHDGHEKPDQKKKRTSGLATLKKKF
IKRRKSNRSADHAKQMRELLSGWDVRDVNALVEEYEGTSALKELSLQASLARPEARTLQKDMADLYEYKY
CTDVDLIFQETCFPVHRAILAAARCPFFKTLSSSPEYGAELIMDINTAGIDMPMF SALLHYLYTGEFGME
DSRFQNVLDILVQLSEEFGTPNSLDVDMRGLFDYMCYYDVVLSFSSDSELVEAFGGNQCLDEELKAHKAV
ISARSPFFRNLLQRRIRTGEEITDRTLRTPTRIILDESIIPKKYATVILHMYTDVVDLSVLHCSPSVGS
LSEVQALVAGKPNMTRAEEMELYHIALFLEFNMLAQGCEDIAESISLDTLIAILKWSHPYGSKWVHR
QALHFLCEEFSQVMTSDVFYELSKDHLLTAIQSDYLQASEQDILKYL IKWGEHQLMKRIADREP NLLSGT
AHSVNKRGVKRRDLMEELREILSSLLPFVRIEHLINSEVLS DAMKRGLISTPPSDMLPTTEGGKSNA
WLRQKNAGIYVRPRLFSPYVEEAKSVLDEMMEVQTDLVRLRMVRMSNVPDTLYMVNNAVPCCHMISHQQ
ISSNQSSPPSVVANEIPVPRLLIMKDMVRRQLRLRHEQVQRAYALNCGEGATVSYEIQIRVREFGLAD
AAEELLQNPHKFFPDERFGDESPLLTMRQPGRCRVNSTPPAETMFTDLSFVAFHPPLPPPPPPYHPPAT
PIHNQLKAGWKQRPPSQHPSRSFSYPCNHSLFHSRTAPKAGPPPVYLP SVKAAPPDCTSTAGLGRQTVAA
AAATTTSTATAAAAAAASEKQVRTQPVLNLDMPDIAVGVSTLSLKDRLPELAVDTEL SQSVSEAGPGPPQ
HLSCIPQRHTHTSRKKHTLEQKTD TRENQYEPDFYDF SNAACRPSTPALSRRTSPSQQGYFGPDLYSH
NKASPSGLKSAYLPQTSPPKQEEARREYPLSPDGHLHRQKNEPIHLDVVEQPPQRSDFPLAAPENASTG
PAHVRGR TAVETDLTFGLTPNRPSLSACSSEAPEERSGRRLADSESLGHGAQRNTDLEREDSISRGRRSP
SKPDFLYKKSAL
```

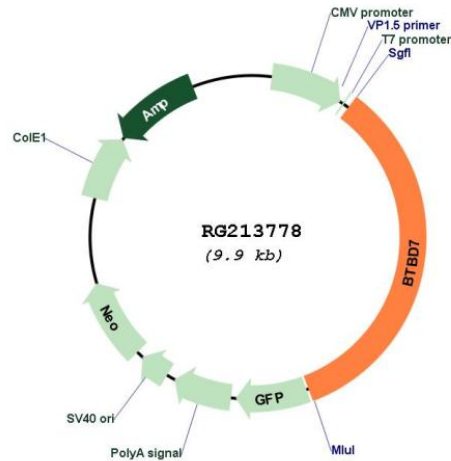
TRTRPLE - GFP Tag - V

Restriction Sites: SgfI-MluI

Cloning Scheme:

Cloning sites used for ORF Shuttling:



Plasmid Map:


ACCN: NM_001002860

ORF Size: 3396 bp

OTI Disclaimer: The molecular sequence of this clone aligns with the gene accession number as a point of reference only. However, individual transcript sequences of the same gene can differ through naturally occurring variations (e.g. polymorphisms), each with its own valid existence. This clone is substantially in agreement with the reference, but a complete review of all prevailing variants is recommended prior to use. [More info](#)

OTI Annotation: This clone was engineered to express the complete ORF with an expression tag. Expression varies depending on the nature of the gene.

Components: The ORF clone is ion-exchange column purified and shipped in a 2D barcoded Matrix tube containing 10ug of transfection-ready, dried plasmid DNA (reconstitute with 100 ul of water).

Reconstitution Method:

1. Centrifuge at 5,000xg for 5min.
2. Carefully open the tube and add 100ul of sterile water to dissolve the DNA.
3. Close the tube and incubate for 10 minutes at room temperature.
4. Briefly vortex the tube and then do a quick spin (less than 5000xg) to concentrate the liquid at the bottom.
5. Store the suspended plasmid at -20°C. The DNA is stable for at least one year from date of shipping when stored at -20°C.

RefSeq: [NM_001002860.4](#)

RefSeq Size: 8448 bp

RefSeq ORF: 3399 bp

Locus ID: 55727

UniProt ID: [Q9P203](#)

Cytogenetics: 14q32.12

Gene Summary:

Acts as a mediator of epithelial dynamics and organ branching by promoting cleft progression. Induced following accumulation of fibronectin in forming clefts, leading to local expression of the cell-scattering SNAIL2 and suppression of E-cadherin levels, thereby altering cell morphology and reducing cell-cell adhesion. This stimulates cell separation at the base of forming clefts by local, dynamic intercellular gap formation and promotes cleft progression (By similarity).[UniProtKB/Swiss-Prot Function]