

Product datasheet for **RG213763**

GPR156 (NM_153002) Human Tagged ORF Clone

Product data:

Product Type:	Expression Plasmids
Product Name:	GPR156 (NM_153002) Human Tagged ORF Clone
Tag:	TurboGFP
Symbol:	GPR156
Synonyms:	GABABL; PGR28
Mammalian Cell Selection:	Neomycin
Vector:	pCMV6-AC-GFP (PS100010)
E. coli Selection:	Ampicillin (100 ug/mL)



[View online »](#)

ORF Nucleotide Sequence:

>RG213763 representing NM_153002
 Red=Cloning site Blue=ORF Green=Tags(s)

TTTTGTAATACGACTCACTATAGGGCGGCCGGAATTCGTCGACTGGATCCGGTACCGAGGAGATCTGCC
 GCC**CGCATCGCC**

ATGGAGCCTGAAATAAAGTCTCTGAATTGTGTGACAGTTTCTGGCCAGGAGCTGGATCGGAGACCCC
 TTCATGATCTCTGCAAGACAACAATTACATCTTCCACCACAGCAGTAAGACCATCTCTTATTATCTCC
 TGTCTCTTGGGTATTGTTTGGACTTTTCTCAGCTGTGGACTTCTGCTGATACTTTTCTTTCTTGCCTTT
 ACAATTCAGTGCAGGAAGAAGCAGGATTGTGAAGATGTCCAGTCCCAATCTGAACATTGTGACCTTACTGG
 GCAGTTGTCTCACTTACAGTAGCGCTTACCTCTTTGGGATTCCAGGATGTTTTAGTGGGGAGCTCAATGGA
 AACTCTCATTAGACAAGACTGTCCATGCTGTGCATTGGGACCTCCCTTGTGTTGGCCCCATTCTGGGA
 AAGAGCTGGCGACTCTACAAGGTGTTACCCAAAGGGTCCCGACAAGAGAGTGATTATCAAAGACCTGC
 AGTTGCTGGGGTGGTGGCAGCCCTGTTGATGGCTGATGTGATCCTGCTCATGACGTGGGTGCTGACTGA
 TCCCATCCAGTGCCTCCAGATTCTCAGTGTGAGTATGACGGTGACAGGAAAGACGTGCTCTGCACTTCG
 ACCAGCACCCACTTCTGTGCTTCCCGGTATTCCGATGTTTGGATTGCTCTCATTTGGGGATGCAAGGGTC
 TGCTCCTGCTGTATGGTGCCTACCTGGCTGGCCTGACTGGCCATGTGAGCTCCCTCCTGTGAATCAGTC
 CTTAACCATCATGGTGGGGTCAACCTCCTTGTACTGGCTGCTGGGCTGCTTTTTGTAGTACCAGATAC
 TTGCATTCCTGGCCCAACCTGGTCTTTGGACTCACATCTGGAGGGATCTTTGTTGTACAACATAATCA
 ACTGCTTCATCTTCAATCCCAAGCTGAAGCAATGGAAGGCATTTGAAGAGGAAAACCAACAATCAGACG
 CATGGCCAAATATTTAGCACTCCCAACAAAAGCTTCCATACCCAGTATGGTGGAGGAGAACTGCCAC
 CCGAGGGGAGAGAAAAGCTCCATGGAGAGGCTCCTCACAGAAAAAATGCTGTGATTGAAAGCCTCCAGA
 AACAAGTAAACAACGCCAAAGAGAAGATTGTGAGGCTGATGTGAGTGCACCTATGACCTCCGAGA
 GGGGGCTGCCCCACCTGCCTCTTCCCGAACAAGGACGTCCAGGCGGTAGCCTCGGTCCACACCCTGGCA
 GCTGCTCAGGGCCTTCGGGTACCTCTGACTTTTCAAGATGATCCTGGCATGGCTGCCGGGATTCCC
 AGTGCACCTCAGGGCCTCCTCATATGCACAAAGCCTTGGAGGGCCTGGGAAGGACTCCAGCTTCTCCCC
 AGGGAAGGAGGAGAAGATATCTGACTCAAAGACTTTTCTGATCATTTAGACTCAGGTTGTAGCCAGAAG
 CCATGGACTGAGCAAAGCCTGGGTCCAGAAAGAGGAGACCAAGTCCCATGAACCCAGCCAGAGTCTCC
 TACCAGATAGAGGCGCTCAGATCCCCAGAGACAGAGGCATCTGGAGAATCAGAGGAGCCCCAGAGCG
 GCGGTACGGGTAGTTCAGTAATCAGGAGAACTTCCAGGAGTCTTACAAGATCTGGCCTGGGCCCT
 GAGGCTTCCCTCTCCACCGCCCTCTTGTGATCAGCAAACCTGGAAGAAGTGTGCTTCCAGCCCCC
 AAAAGATGCCCTCTCCAAGGAGCTGGGCTTTAGCCCTTACATGGTGAGGAGAAGGCGGGCAGCTCAGCG
 GGCCCGCTCACATTTCTGGCTCTGCACCCTCATCTGTGGGGCATCGGGCAAACAGGACTGTTCTGGG
 GCACACAGCAGGCTACATGTGCAGAATGGGGACAGCCCCAGCCTGGCCCCACAACTACTGATTCCAGAG
 TACGAAGACCTTCTTCCAGGAAGCCTTCACTACCTTCCAGATCCTCAAGACAGACCAGGTACCCTGGAGG
 CAGCAAACAAGCCAGACAGAGCCCGAGGGGGCTAGAGGGAGCAAAGCAGCCTTCTTCCGACAGCCTTCT
 GGTCTGGCCGGGCCCAAGTCTGTGCCCCATGCCTCTCAAAGCCTCACCTGACTTGCCTGAACAGT
 GGCAGCTGTGGCCCCAGTGCCTCAGGCTGTGCCTCCCTGTCTTCAACACAGCTATTTGATACTGA
 GTCCAGCAGCTCAGATGAGTTCTTCTGCCGCTGCCACCGGCCCTACTGTGAAATCTGCTTCCAGAGCTCT
 TCTGACTCTAGTGACAGTGGCACATCAGACACTGACCCTGAGCCTACTGGGGGGCTGGCTTCCAGAGAAA
 AGCTGTGGGCCGCTCCAAGCCTATTGTGAACCTCAAAGATGACTTGAACCCACGCTGGTG

ACGCGTACGCGGCCGCTCGAG - GFP Tag - GTTTAA

Protein Sequence: >RG213763 representing NM_153002
Red=Cloning site Green=Tags(s)

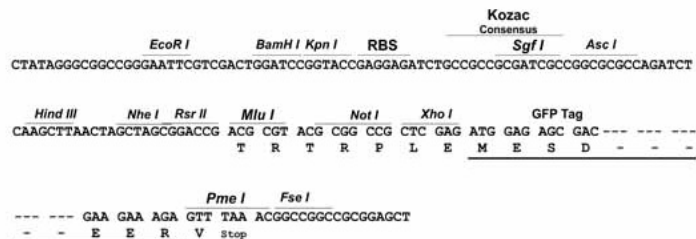
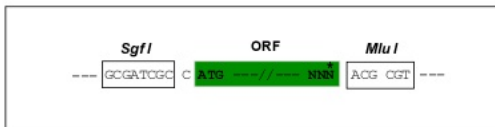
```
MEPEINCSELCDSPFGQELDRRPLHDLCKTTITSSHSSKTISSLSPLVLLGIWVTFVLSGGLLLILFFLAF
TIHCRKNRIVKMSSPNLNIIVTLGSLTYSSAYLFGIQDVLVGSSMETLIQTRLSMLCIGTSLVFGPILG
KSWRLYKVFVTPQVDPKRVIIKDLQLLGLVAALLMADVILLMTWVLTDPICLQILSVSMTVTGKDVSTCS
TSTHFCASRYSDVWIALIWGCKGLLLL YGAYLAGLTGHVSSPPVNQSLTIMVGVNLLVLAAGLLFVVTRY
LHWPVNLVFGLTSGGIFVCTTTINCFIFIPQLKQWKAFFEEENQTIIRMAKYFSTPNKSFHTQYGEENCH
PRGEKSSMERLLTEKNAVIESLQEQVNNAKEKIVRLMSAECTYDLPEGAAPPASSPNKDQVAVASVHTLA
AAQGPSGHLSDFNQDPGMAARDSQCTSGPSSYAQSLEGPBKDSSFSPGKEEKISDSKDFSDHLDGSCSQK
PWTEQSLGPERGDQVPMNPSQSLLPDRGGSDPQRQRHLENSEPPERRSRVSSVIREKLQEVLDLGLGP
EASLSTAPSCHQQTWKNSAAFSPQKMPKSKELGFSYPMVRRRRAAQRARSHFPGSAPSSVGHANRTPVPG
AHSRLHVQNGDSPSLAPQTTDSRVRRPSSRKPSLPSDPQDRPGTLEGSKQSQTEPEGARGSKAAFLRQPS
GSGRAPSPAAPCLSKASPDLPQWQLWPPVPSGCASLSSQHSYFDTESSSSDEFFCRCHRPYCEICFQSS
SDSSDSGTSDTDPEPTGGLASWEKLVARSKPIVNFKDDLKPTLV
```

TRTRPLE - GFP Tag - V

Restriction Sites: SgfI-MluI

Cloning Scheme:

Cloning sites used for ORF Shutting:

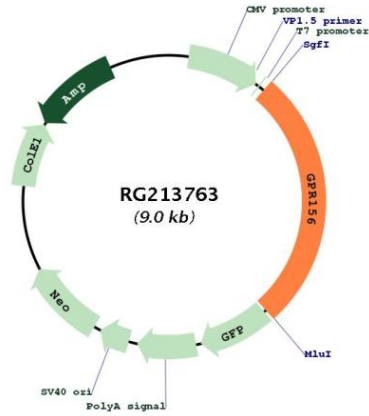


ACCN: NM_153002

ORF Size: 2442 bp

OTI Disclaimer:	<p>Due to the inherent nature of this plasmid, standard methods to replicate additional amounts of DNA in E. coli are highly likely to result in mutations and/or rearrangements. Therefore, OriGene does not guarantee the capability to replicate this plasmid DNA. Additional amounts of DNA can be purchased from OriGene with batch-specific, full-sequence verification at a reduced cost. Please contact our customer care team at custsupport@origene.com or by calling 301.340.3188 option 3 for pricing and delivery.</p> <p>The molecular sequence of this clone aligns with the gene accession number as a point of reference only. However, individual transcript sequences of the same gene can differ through naturally occurring variations (e.g. polymorphisms), each with its own valid existence. This clone is substantially in agreement with the reference, but a complete review of all prevailing variants is recommended prior to use. More info</p>
OTI Annotation:	This clone was engineered to express the complete ORF with an expression tag. Expression varies depending on the nature of the gene.
Components:	The ORF clone is ion-exchange column purified and shipped in a 2D barcoded Matrix tube containing 10ug of transfection-ready, dried plasmid DNA (reconstitute with 100 ul of water).
Reconstitution Method:	<ol style="list-style-type: none"> 1. Centrifuge at 5,000xg for 5min. 2. Carefully open the tube and add 100ul of sterile water to dissolve the DNA. 3. Close the tube and incubate for 10 minutes at room temperature. 4. Briefly vortex the tube and then do a quick spin (less than 5000xg) to concentrate the liquid at the bottom. 5. Store the suspended plasmid at -20°C. The DNA is stable for at least one year from date of shipping when stored at -20°C.
RefSeq:	NM_153002.1 , NP_694547.1
RefSeq Size:	2445 bp
RefSeq ORF:	2445 bp
Locus ID:	165829
UniProt ID:	Q8NFN8
Cytogenetics:	3q13.33
Protein Families:	Druggable Genome, Transmembrane
Protein Pathways:	Neuroactive ligand-receptor interaction
Gene Summary:	G protein-coupled receptors (GPCRs) are a large superfamily of cell surface receptors characterized by 7 helical transmembrane domains, together with N-terminal extracellular and C-terminal intracellular domains.[supplied by OMIM, Mar 2008]

Product images:



Circular map for RG213763