

Product datasheet for **RG213695**

Elastin (ELN) (NM_001081754) Human Tagged ORF Clone

Product data:

Product Type:	Expression Plasmids
Product Name:	Elastin (ELN) (NM_001081754) Human Tagged ORF Clone
Tag:	TurboGFP
Symbol:	ELN
Synonyms:	ADCL1; SVAS; WBS; WS
Mammalian Cell Selection:	Neomycin
Vector:	pCMV6-AC-GFP (PS100010)
E. coli Selection:	Ampicillin (100 ug/mL)



[View online »](#)

ORF Nucleotide
Sequence:

>RG213695 representing NM_001081754
Red=Cloning site Blue=ORF Green=Tags(s)

TTTTGTAATACGACTCACTATAGGGCGGCCGGGAATTCGTCGACTGGATCCGGTACCGAGGAGATCTGCC
GCCGCGATCGCC

ATGGCGGGTCTGACGGCGCGGCCCGCGGCCGGAGTCTCCTGCTCCTGCTGTCCATCTCCACCCT
CTCGGCCTGGAGGGTCCCTGGGGCATTCTGTGGAGTTCTGGAGGAGTCTTTATCCAGGGCTGG
TCTCGGAGCCCTTGAGGAGGAGCGCTGGGGCCTGGAGGCAAACCTTTAAGCCAGTTCCCGGAGGGCTT
GCGGGTGTGGCCTTGGGGCAGGGCTCGGCGCCTCCCGCAGTTACCTTTCCGGGGCTCTGGTGCCTG
GTGGAGTGGCTGACGCTGCTGCAGCCTATAAAGCTGCTAAGGCTGGCGCTGGGCTTGGTGGTGTCCAGG
AGTTGGTGGCTTAGGAGTGTCTGCAGCCCTTCTGTGCCAGGTGCGGTGGTTCTCAGCCTGGAGCCGGA
GTGAAGCCTGGGAAAGTCCGGGTGTGGGGCTGCCAGGTGTATACCCAGGTGGCGTGTCCAGGAGCTC
GGTCCCGGTGTGGGGTGTCTCCCTGGAGTCCCACTGGAGCAGGAGTTAAGCCAAAGGCTCCAGGTGT
AGGTGGAGCTTTGCTGGAATCCAGGAGTTGGACCCTTTGGGGACCGCAACCTGGAGTCCCACTGGGG
TATCCCATCAAGGCCCAAGCTGCCTGGTGGCTATGGACTGCCCTACACCACAGGGAAACTGCCCTATG
GCTATGGGCCCGAGGAGTGGCTGGTGCAGCGGCAAGGCTGGTTACCCAACAGGGACAGGGGTTGGCC
CCAGGCAGCAGCAGCAGCGGCAGCTAAAGCAGCAGCAAAGTTCGGTGTGGAGCAGCCGGAGTCTCCCT
GGTGTGGAGGGGCTGGTGTTCCTGGCGTGCCTGGGGCAATTCCTGGAATTGGAGGCATCGCAGGCGTTG
GGACTCCAGCTGCAGCTGCAGCTGCAGCAGCAGCCGCTAAGGCAGCCAAGTATGGAGCTGCTGCAGGCTT
AGTGCCTGGTGGCCAGGCTTTGGCCGGGAGTAGTTGGTGTCCAGGAGCTGGCGTCCAGGTGTGGT
GTCCAGGAGCTGGGATCCAGTTGTCCAGGTGCTGGGATCCAGGTGCTGCGGTTCCAGGGTGTGT
CACCAGAAGCAGCTGCTAAGGCAGCTGCAAAGGCAGCAAATACGGGGCCAGGCCGGAGTCGGAGTTGG
AGGCATTCTACTTACGGGGTTGGAGCTGGGGGCTTTCCCGCTTTGGTGTGCGAGTCGGAGGTATCCCT
GGAGTCGAGGTGCTCCCTGGTGTGCGAGGTGTTCCCGGAGTCGGAGGTGCTCCCGGAGTTGGCATTCC
CCGAAGCTCAGGCAGCAGCTGCCGCAAGGCTGCCAAGTACGGAGTGGGGACCCAGCAGCTGCAGCTGC
TAAAGCAGCCGCAAAGCCGCCAGTTTGGGTTAGTTCTGGTGTGCGCGTGGCTCCTGGAGTTGGCGTG
GCTCCTGGTGTGCGGTGTGGCTCCTGGAGTTGGCTTGGCTCCTGGAGTTGGCGTGGCTCCTGGAGTTGGT
TGGCTCCTGGCGTTGGCGTGGCTCCCGCATTGGCCCTGGTGGAGTTGCAGCTGCAGCAAATCCGCTGC
CAAGGTGGCTGCCAAAGCCAGCTCCGAGCTGCAGCTGGGCTTGGTGTGGCATCCCTGGACTTGGAGTT
GGTGTGCGCGTCCCTGGACTTGGAGTTGGTGTGCTGGTGTCTGGACTTGGAGTTGGTGTGTTCTGT
GCTTCGGGGCAGTACCTGGAGCCCTGGCTGCCGCTAAAGCAGCCAATATGGAGCAGCAGTGCCTGGGGT
CCTTGGAGGGCTCGGGGCTCTCGGTGGAGTAGGCATCCAGGCGGTGTGGTGGGAGCCGGACCCGCC
GCCGCTGCCGAGCCAAAGCTGCTGCCAAAGCCGCCAGTTTGGCCTAGTGGGAGCCGCTGGGCTCGGAG
GACTCGGAGTCGGAGGGCTTGGAGTTCCAGGTGTGGGGGCTTGGAGGTATACCTCCAGCTGCAGCCGC
TAAAGCAGCTAAATACGGAGTGGCAGCAAGACCTGGCTTCGGATTGTCTCCATTTCCAGGTGGGGCC
TGCTGGGAAAGCTTGTGGCCGAAGAGAAAA

ACGCGTACGCGGCCGCTCGAG - GFP Tag - GTTTAA

Protein Sequence: >RG213695 representing NM_001081754
 Red=Cloning site Green=Tags(s)

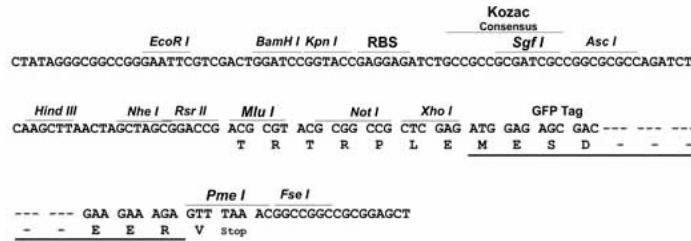
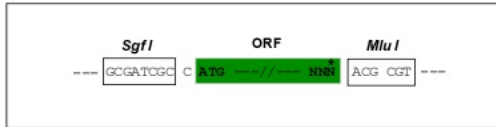
MAGLTAAAPRPGVLLLLLSILHPSRPGGVPGAIPGGVPGGVFYPGAGLGALGGGALGPGGKPLKPVPGGL
 AGAGLGAGLGAFPAVTFPGALVPGGVADAAAAYKAAKAGAGLGGVPGVGGGLGVSAAPSVPGAVVPQPGAG
 VKPGKVPVGLPGVYPPGGVLPGARFPVGVLPVPTGAGVKPKAPGVGGAFAGIPGVGPFGGPQPGVPLG
 YPIKAPKLPGGYGLPYTTGKLPYGYGPGGVAGAAGKAGYPTGTGVPQAAAAAAAAAKAAAFGAGAAGVLP
 GVGAGVPGVPGAIPGIIGGIAGVGTAAAAAAAAAAKAAKYGAAAGLVPGGPGFGPGVVGVPGAGVPGVG
 VPGAGIPVVPAGIPGAAVPGVVSPEAAAAKAAKAAKYGARPGVGGIPTYGVGAGGFPFGVGGVGGIP
 GVAGVPGVGGVPGVGGVPGVVISPEAQAAAAKAAKYGVGTAAAAAAAAKAAQFGLVPGVGVAPGVGV
 APGVGVAPGVGLAPGVGVAPGVGVAPGVVAPGIGPGVAAAAKSAAKVAQAQLRAAGL GAGIPGLGV
 GVGVPGLGVGAGVPLGVGAGVPGFGAVPGALAAKAAKYGAAVPGVLLGGLGALGGVGPVGGVAGPAA
 AAAAAKAAKAAQFGLVGAAGLGLGVGGLGVPVGGVGGIPAAAAAAAAKAAKYGVAARPGFGLSPIFGGA
 CLGKACGRKRK

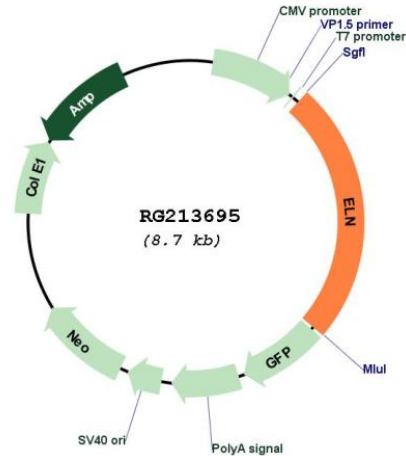
TRTRPLE - GFP Tag - V

Restriction Sites: SgfI-MluI

Cloning Scheme:

Cloning sites used for ORF Shutting:



Plasmid Map:


ACCN: NM_001081754

ORF Size: 2133 bp

OTI Disclaimer: The molecular sequence of this clone aligns with the gene accession number as a point of reference only. However, individual transcript sequences of the same gene can differ through naturally occurring variations (e.g. polymorphisms), each with its own valid existence. This clone is substantially in agreement with the reference, but a complete review of all prevailing variants is recommended prior to use. [More info](#)

OTI Annotation: This clone was engineered to express the complete ORF with an expression tag. Expression varies depending on the nature of the gene.

Components: The ORF clone is ion-exchange column purified and shipped in a 2D barcoded Matrix tube containing 10ug of transfection-ready, dried plasmid DNA (reconstitute with 100 ul of water).

Reconstitution Method:

1. Centrifuge at 5,000xg for 5min.
2. Carefully open the tube and add 100ul of sterile water to dissolve the DNA.
3. Close the tube and incubate for 10 minutes at room temperature.
4. Briefly vortex the tube and then do a quick spin (less than 5000xg) to concentrate the liquid at the bottom.
5. Store the suspended plasmid at -20°C. The DNA is stable for at least one year from date of shipping when stored at -20°C.

RefSeq: [NM_001081754.3](#)

RefSeq Size: 3441 bp

RefSeq ORF: 2136 bp

Locus ID: 2006

UniProt ID: [P15502](#)

Cytogenetics: 7q11.23

Protein Families: Druggable Genome, Secreted Protein, Transmembrane

Gene Summary: This gene encodes a protein that is one of the two components of elastic fibers. Elastic fibers comprise part of the extracellular matrix and confer elasticity to organs and tissues including the heart, skin, lungs, ligaments, and blood vessels. The encoded protein is rich in hydrophobic amino acids such as glycine and proline, which form mobile hydrophobic regions bounded by crosslinks between lysine residues. Degradation products of the encoded protein, known as elastin-derived peptides or elastokines, bind the elastin receptor complex and other receptors and stimulate migration and proliferation of monocytes and skin fibroblasts. Elastokines can also contribute to cancer progression. Deletions and mutations in this gene are associated with supravalvular aortic stenosis (SVAS) and autosomal dominant cutis laxa. [provided by RefSeq, Aug 2017]