

Product datasheet for **RG213689**

Eph receptor A1 (EPHA1) (NM_005232) Human Tagged ORF Clone

Product data:

Product Type:	Expression Plasmids
Product Name:	Eph receptor A1 (EPHA1) (NM_005232) Human Tagged ORF Clone
Tag:	TurboGFP
Symbol:	Eph receptor A1
Synonyms:	EPH; EPHT; EPHT1
Mammalian Cell Selection:	Neomycin
Vector:	pCMV6-AC-GFP (PS100010)
E. coli Selection:	Ampicillin (100 ug/mL)



[View online »](#)

ORF Nucleotide Sequence:

>RG213689 representing NM_005232
 Red=Cloning site Blue=ORF Green=Tags(s)

TTTTGTAATACGACTCACTATAGGGCGGCCGGGAATTCGTCGACTGGATCCGGTACCGAGGAGATCTGCC
 GCC**CGATCGCC**

ATGGAGCGGCGCTGGCCCTGGGGCTAGGGCTGGTGTCTGTCTGCGCCCCGCTGCCCCGGGGGCTC
 ACGCCAAGGAAGTTACTCTGATGGACACAAGCAAGGCACAGGGAGAGCTGGGCTGGCTGGATCCCCC
 AAAAGATGGGTGGAGTGAACAGCAACAGATACTGAATGGGACACCCCTGTACATGTACCAGGACTGCCCA
 ATGCAAGGACGCAGAGACTGACCCTGGCTTCCGCTCCAATTGGATCTACCGGGGGAGGAGGCTTCCC
 GCGTCCACGTGGAGCTGCAGTTCACCGTGGGGACTGCAAGAGTTTCCCTGGGGAGCCGGGCTCTGGG
 CTGCAAGGAGACCTTCAACCTTCTGTACATGGAGAGTGACCAGGATGTGGGCATTAGCTCCGACGGCCC
 TTGTTCCAGAAGTAACACGGTGGCTGCAGACCAGAGCTTACCATTGAGACCTTGCCTGTGGCTCCG
 TGAAGCTGAATGTGGAGCGCTGCTCTGGGCCGCTGACCCGCGTGGCTCTACCTCGCTTCCACAA
 CCCGGGTGCCTGTGTGGCCCTGGTGTCTGTCCGGTCTTACCAGCGCTGCTGAGACCTGAATGGC
 TTGGCCCAATCCAGACACTCTGCCTGGCCCCGCTGGGTTGGTGAAGTGGCGGGGACCTGCTTGCCCC
 ACGCGCGGGCCAGCCCCAGGCCCTCAGGTGCACCCCGCATGCACTGCAGCCCTGATGGCGAGTGGCTGGT
 GCCTGTAGGACGGTGCCACTGTGAGCCTGGCTATGAGGAAGTGGCAGTGGCGAAGCATGTGTTGCCTGC
 CCTAGCGGCTCCTACCGATGGACATGGACACACCCCAATTGTCTCACGTGCCCCAGCAGAGCACTGCTG
 AGTCTGAGGGGGCCACCATCTGTACCTGTGAGAGCGGCCATTACAGAGCTCCCGGGGAGGGCCCCAGGT
 GGCATGCACAGGTCCCCCTCGGCCCCCGAAACCTGAGCTTCTGCTCAGGGACTCAGCTCTCCCTG
 CGTTGGGAACCCAGCAGATACGGGGGGACGCCAGGATGTCAGATACAGTGTGAGGTGTTCCAGTGTG
 AGGGCACAGCACAGGACGGGGGGCCCTGCCAGCCCTGTGGGTGGGCGTGCATTTCTCGCCGGGGCCCG
 GGGGCTACCACACCTGCAGTGCATGTCAATGGCCTTGAACCTTATGCCAACTACACCTTAAATGTGGAA
 GCCAAAATGGAGTGTGAGGCTGGGCAGCTCTGGCCATGCCAGCACCTCAGTCAGCATCAGCATGGGGC
 ATGCAGAGTCACTGTGAGCCTGTCTCTGAGACTGGTGAAGAAAGAACCGAGGCAACTAGAGCTGACCTG
 GGCGGGTCCCGGCCCGAAGCCCTGGGGCGAACCTGACCTATGAGTGCACGTGCTGAACCAGGATGAA
 GAACGGTACCAGATGGTTCTAGAACCAGGGTCTTGTGACAGAGCTGCAGCCTGACACCACATACATCG
 TCAGAGTCCGAATGCTGACCCCACTGGGCTCTGGCCCTTCTCCCTGATCATGAGTTTCGGACCAGCCC
 ACCAGTGTCCAGGGCCCTGACTGGAGGAGAGATTGTAGCCGTATCTTTGGGCTGCTGCTGGTGCAGCC
 TTGCTGCTTGGGATTCTGTTTTCCGGTCCAGGAGAGCCAGCGGCAGAGGCAGAGGCAGCGTGAAC
 GCGCCACCGATGTGGATCGAGAGGACAAGCTGTGGCTGAAGCCTTATGTGGACCTCCAGGCATACGAGGA
 CCCTGCACAGGGAGCCTTGGACTTACCCGGGAGCTTGATCCAGCGTGGCTGATGGTGGCACTGTCATA
 GGAGAAGGAGAGTTTGGGGAAGTGTATCGAGGGACCCTGAGGCTCCCCAGCCAGGACTGCAAGACTGTGG
 CCATTAAGACCTAAAAGACACATCCCCAGGTGGCCAGTGGTGAACCTCCTTCGAGAGGCAACTATCAT
 GGGCCAGTTTAGCCACCCGCATATTCTGCATCTGGAAGGCGTCGTACAAAGCGAAAGCCGATCATGATC
 ATCACAGAATTTATGGAGAATGGAGCCCTGGATGCCTTCTGAGGGAGCGGGAGGACCAGCTGGTCCCTG
 GGCAGCTAGTGGCCATGCTGCAGGGCATAGCATCTGGCATGAACCTACCTCAGTAATCACAAATATGTCCA
 CCGGGACCTGGCTGCCAGAAACATCTTGGTGAATCAAAACCTGTGCTGCAAGGTGCTGACTTTGGCCTG
 ACTCGCCTCCTGGATGACTTTGATGGCACATACGAAACCCAGGGAGGAAAGATCCCTATCCGTTGGACAG
 CCCCTGAAGCCATTGCCATCGGATCTTACCACAGCCAGCGATGTGTGGAGCTTTGGGATTGTGATGTG
 GGAGGTGCTGAGCTTTGGGGACAAGCCTTATGGGGAGATGAGCAATCAGGAGGTTATGAAGAGCATTGAG
 GATGGGTACCGTTGCCCTCCTGTGGACTGCCCTGCCCTCTGTATGAGCTCATGAAGAACTGCTGGG
 CATATGACCGTGGCCGCCGGCCACACTTCCAGAAGCTTACGGCACATCTGGAGCAACTGCTTGCCAAACC
 CCACTCCCTGCGGACATTGCCAACTTTGACCCAGGGTACTCTTCCCTGCCAGCCTGAGTGGCTCA
 GATGGGATCCCGTATCGAACCTCTCTGAGTGGCTCGAGTCCATACGCATGAAACGCTACATCCTGCACT
 TCCACTCGGCTGGGCTGGACACCATGGAGTGTGTGCTGGAGCTGACCGCTGAGGACCTGACGCAGATGG
 AATCACACTGCCCGGCCACCAGAAGCGCATTCTTGCAGTATTCAGGGATTCAAGGAC

ACGCGTACGCGGCCGCTCGAG – GFP Tag – GTTTAA

Protein Sequence: >RG213689 representing NM_005232
 Red=Cloning site Green=Tags(s)

```

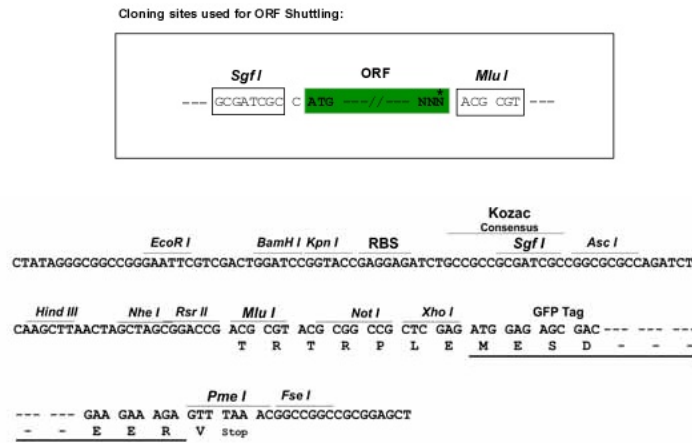
MERRWPLGLGLVLLLCAPLPPGAHAKEVTLMDTSKAQGELGWLLDPPKDGWSEQQILNGTPLYMYQDCP
MQGRRDTHWLRSNWIYRGEEASRVHVELQFTVRDCKSFPGGAGPLGCKETFNLLYMESDQDVGIQLRRP
LFQKVTVAADQSFTIRDLASGSVKLNVERCSLGRLTRRGLYLAFHNPGACVALVSVRVFYQRCPETLNG
LAQFPDTPGPAGLVEVAGTCLPHARASPRPSGAPRMHCSPDGEWLVPVGRCHCEPGYEEGGSGEACVAC
PSGSYRMDMDTPHCLTCPQQSTAESEGATICTCESGHYRAPGEGPQVACTGPPSAPRNLSFASGTQLSL
RWEPPADTGGRQDVRYSVRCSQCQGT AQDGGPCQPCGVGVHFSFGARGLTTPAVHVNGLPEYANYTFNVE
AQNGVSLGSSGHASTSVSISMGHAESLSGLSLRLVKKEPRQLELTWAGSRPRSPGANLYELHVLNQDE
ERYQMVLEPRVLLTELQPDTTYIVRVRMLTPLGPGFSPDHEFRTSPPVSRGLTGGEIVAVIFGLLLGAA
LLLGLVFRSRRARQRQRQRDRATDVEDKDLWLKPYVDLQAYEDPAQGALDFTRELDPAWLMVDTVI
GEGEFGEVYRGLRLPSQDCKTVAIKTLKDTSPGGQWVNFLEATIMGQFSHPHILHLEGVVTKRKPIMI
ITFEENGALDAFLREREDQLVPGQLVAMLQGIASGMNYLSNHNYVHRDLAARNILVNQNLCKKVSDFGL
TRLLDDFDGTYETQGGKIPIRWTAPEAIAHRIFTTASDVVSFGIWMWEVLSFGDKPYGEMSNQEVMSIE
DGYRLPPPVDCPAPLYELMKNCWAYDRARRPHFQKLQAHLEQLLANPHSLRTIANFDPRTVLRPLSLSGS
DGIPYRTVSEWLESIRMKRYILHFHSAGLDTMECVLELTAEDLTQMGITLPGHQKRILCSIQGFKD
    
```

TRTRPLE – GFP Tag – V

Restriction Sites:

SgfI-MluI

Cloning Scheme:

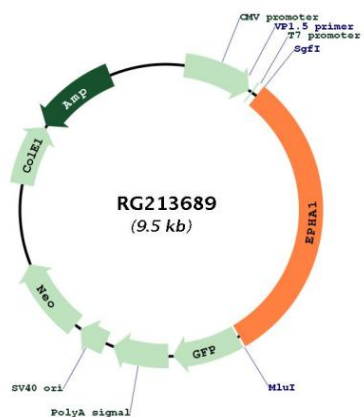


ACCN: NM_005232

ORF Size: 2928 bp

OTI Disclaimer:	The molecular sequence of this clone aligns with the gene accession number as a point of reference only. However, individual transcript sequences of the same gene can differ through naturally occurring variations (e.g. polymorphisms), each with its own valid existence. This clone is substantially in agreement with the reference, but a complete review of all prevailing variants is recommended prior to use. More info
OTI Annotation:	This clone was engineered to express the complete ORF with an expression tag. Expression varies depending on the nature of the gene.
Components:	The ORF clone is ion-exchange column purified and shipped in a 2D barcoded Matrix tube containing 10ug of transfection-ready, dried plasmid DNA (reconstitute with 100 ul of water).
Reconstitution Method:	<ol style="list-style-type: none">1. Centrifuge at 5,000xg for 5min.2. Carefully open the tube and add 100ul of sterile water to dissolve the DNA.3. Close the tube and incubate for 10 minutes at room temperature.4. Briefly vortex the tube and then do a quick spin (less than 5000xg) to concentrate the liquid at the bottom.5. Store the suspended plasmid at -20°C. The DNA is stable for at least one year from date of shipping when stored at -20°C.
RefSeq:	NM_005232.5
RefSeq Size:	3367 bp
RefSeq ORF:	2931 bp
Locus ID:	2041
UniProt ID:	P21709
Cytogenetics:	7q34-q35
Protein Families:	Druggable Genome, Protein Kinase, Transmembrane
Protein Pathways:	Axon guidance
Gene Summary:	This gene belongs to the ephrin receptor subfamily of the protein-tyrosine kinase family. EPH and EPH-related receptors have been implicated in mediating developmental events, particularly in the nervous system. Receptors in the EPH subfamily typically have a single kinase domain and an extracellular region containing a Cys-rich domain and 2 fibronectin type III repeats. The ephrin receptors are divided into 2 groups based on the similarity of their extracellular domain sequences and their affinities for binding ephrin-A and ephrin-B ligands. This gene is expressed in some human cancer cell lines and has been implicated in carcinogenesis. [provided by RefSeq, Jul 2008]

Product images:



Circular map for RG213689