

Product datasheet for **RG213682**

PKIG (NM_007066) Human Tagged ORF Clone

Product data:

Product Type: Expression Plasmids
Product Name: PKIG (NM_007066) Human Tagged ORF Clone
Tag: TurboGFP
Symbol: PKIG
Synonyms: PKI-gamma
Mammalian Cell Selection: Neomycin
Vector: pCMV6-AC-GFP (PS100010)
E. coli Selection: Ampicillin (100 ug/mL)
ORF Nucleotide Sequence: >RG213682 representing NM_007066
Red=Cloning site Blue=ORF Green=Tags(s)

TTTTGTAATACGACTCACTATAGGGCGGCCGGAATTCGTCGACTGGATCCGGTACCGAGGAGATCTGCC
GCC**CGATCGCC**

ATGATGGAGGTCGAGTCCTCTACTCGGACTTCATCTCCTGTGACCGGACAGGCCGTCGGAATGCGGTCC
CTGACATCCAGGGAGACTCAGAGGCTGTGAGCGTGAGGAAGCTGGCTGGAGACATGGCGAGCTGGCACT
CGAGGGGGCAGAAGGACAGGTGGAGGGAAGCGCCCCAGACAAGGAAGCTGGCAACCAGCCCCAGAGCAGC
GATGGGACCACCTCGTCT

ACGCGTACGCGGCCGCTCGAG - GFP Tag - GTTTAA

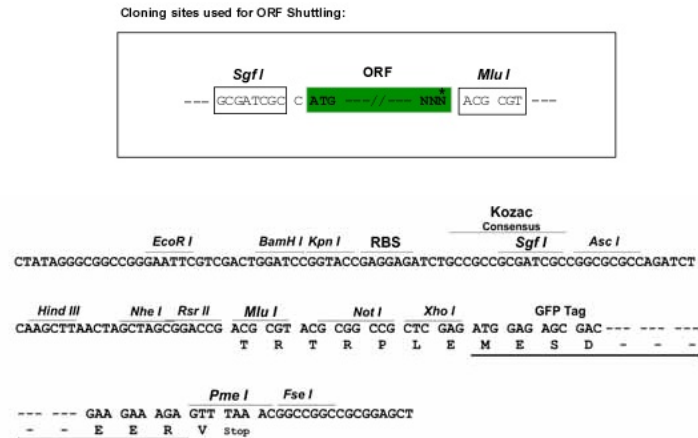
Protein Sequence: >RG213682 representing NM_007066
Red=Cloning site Green=Tags(s)
MMEVESSYSDFISCDRTGRRNAVPIQGDSEAVSVRKLAGDMGELALEGAEGQVEGSAPDKEAGNQPOSS
DGTSS

TRTRPLE - GFP Tag - V

Restriction Sites: Sgfl-MluI



[View online »](#)

Cloning Scheme:


ACCN: NM_007066

ORF Size: 228 bp

OTI Disclaimer: The molecular sequence of this clone aligns with the gene accession number as a point of reference only. However, individual transcript sequences of the same gene can differ through naturally occurring variations (e.g. polymorphisms), each with its own valid existence. This clone is substantially in agreement with the reference, but a complete review of all prevailing variants is recommended prior to use. [More info](#)

OTI Annotation: This clone was engineered to express the complete ORF with an expression tag. Expression varies depending on the nature of the gene.

Components: The ORF clone is ion-exchange column purified and shipped in a 2D barcoded Matrix tube containing 10ug of transfection-ready, dried plasmid DNA (reconstitute with 100 ul of water).

Reconstitution Method:

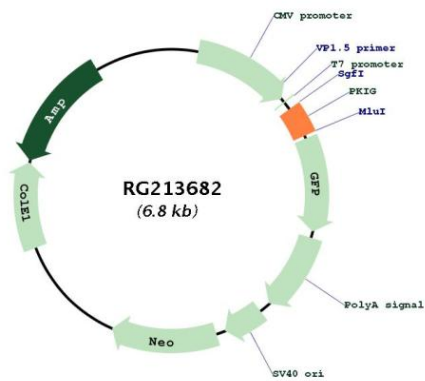
1. Centrifuge at 5,000xg for 5min.
2. Carefully open the tube and add 100ul of sterile water to dissolve the DNA.
3. Close the tube and incubate for 10 minutes at room temperature.
4. Briefly vortex the tube and then do a quick spin (less than 5000xg) to concentrate the liquid at the bottom.
5. Store the suspended plasmid at -20°C. The DNA is stable for at least one year from date of shipping when stored at -20°C.

RefSeq: [NM_007066.5](#)

RefSeq Size: 1206 bp

| | |
|-------------------|--|
| RefSeq ORF: | 231 bp |
| Locus ID: | 11142 |
| UniProt ID: | <u>Q9Y2B9</u> |
| Cytogenetics: | 20q13.12 |
| Domains: | PKI |
| Protein Families: | Druggable Genome |
| Gene Summary: | This gene encodes a member of the protein kinase inhibitor family. Studies of a similar protein in mice suggest that this protein acts as a potent competitive cAMP-dependent protein kinase inhibitor, and is a predominant form of inhibitor in various tissues. The encoded protein may be involved in osteogenesis. Alternative splicing results in multiple transcript variants. [provided by RefSeq, Jul 2013] |

Product images:



Circular map for RG213682