

Product datasheet for **RG213669**

CEACAM20 (NM_001102600) Human Tagged ORF Clone

Product data:

Product Type:	Expression Plasmids
Product Name:	CEACAM20 (NM_001102600) Human Tagged ORF Clone
Tag:	TurboGFP
Symbol:	CEACAM20
Synonyms:	UNQ9366
Mammalian Cell Selection:	Neomycin
Vector:	pCMV6-AC-GFP (PS100010)
E. coli Selection:	Ampicillin (100 ug/mL)



[View online »](#)

ORF Nucleotide Sequence:

>RG213669 representing NM_001102600
 Red=Cloning site Blue=ORF Green=Tags(s)

TTTTGTAATACGACTCACTATAGGGCGGCCGGGAATTCGTCGACTGGATCCGGTACCGAGGAGATCTGCC
 GCC**CGGATCGCC**

ATGGGGCCTGCTGACTCATGGGGACACCACTGGATGGGAATCCTGCTTTACGCTCGCTTTGTACCGTAT
 GGAGTCCTCCAGCTGCAGCCAGCTCACCTCAATGCCAACCCACTTGATGCCACCCAAAGTGAGGATGT
 TGTTCGCTGTGTTTGGGACCCCCAGGACACCCAGATTTCATGGCAGATCCAGAGAGCTGGCCAAACCC
 TCCATTGCAGTCAGCCAGGCACTGCCATAGAGCAGAAGGACATGGTGACCTTCTACTGCACCACTAAGG
 ACGTCAACATTACCATCCACTGGGTTTCCAACAACCTCTCCGTTGTGTTCCATGAGCGCATGCAGCTGTC
 CAAGGATGGCAAGATCCTCACCATTCTCATTGTCCAGCGGGAGGACTCAGGGACTACCAATGTGAAGCT
 CGAGATGCCCTTCTGAGCCAGAGGAGCGACCCCATCTTCTGGATGTGAAGTATGGTCTGATCCTGTTG
 AAATCAAATTGGAGTCTGGTGTGCCAGTGGGGAGGTGGTTGAGGTGATGGAGGGCTCCAGCATGACCTT
 CTTAGCGGAAACAAAGTCTCACCACCCCTGTGCCTATACTTGGTTTCTCCTTGACTCCATTCTGTCTCAC
 ACCACGAGAACATTCACCATCCATGCTGTGTCCAGAGAACATGAGGGCCTGTACAGGTGCTTGGTGTCCA
 ACAGTGCCACCCACCTGTCCAGCCTGGGTACTCTGAAGGTCCGAGTACTTGAAACTGACCATGCCTCA
 AGTCGTGCCTTCAAGCCTGAACCTTGTGGAGAATGCTAGGTCTGTGGACCTGACCTGCCAAACCGTCAAT
 CAGAGTGTGAATGTCCAGTGGTTCCTAAGTGGCCAGCCCTCCTGCCAGTGAGCACCTGCAGCTGTGAG
 CTGACAACAGGACCCTAATCATCCATGGCCTCCAGCGGAATGACACGGGGCCCTATGCCTGTGAGGTCTG
 GAACTGGGGCAGCCGGGCGGAGTGAGCCCTTGAGCTGACCATCAACTATGGTCTGACCAAGTGCAC
 ATCACCAGGAGTCGGCATCTGAGATGATCAGCACCATAGAGGCAGAGCTCAACTCCAGCCTGACCTGC
 AGTGTGGGCGAGTCCAAGCCAGGTGCTGAGTATCGCTGGACTCTTGAACACTCCACCGGGAGCACCT
 GGGTGAGCAGCTGATTATCAGGGCTCTGACCTGGGAACACGACGGGATCTACAACGTGCACAGCCTCCAAC
 TCTCTCACTGGCCTGGCCGCTCCACTTCACTGCTGGTCAAGGTGGTAGGTCCCCAGTCTCCTCCTCGT
 CCTCAGGGCCATCGCTGGTATTGTGTCATCGGGATCCTGGCTGTCATTGCTGTGGCCTCAGAACTGGGCTA
 TTTTCTCTACATCAGAAATGCCAGACGGCCCTCAAGGAAAACAACAGAGGACCCAGTCATGAGACCTCA
 CAACCCATCCCGAAGGAGGAGCACCCACAGAGCCAGTCCGAAAGCCTGAGTCTGAGTATTGCAATA
 TATCCAGCTTCAAGGACGGATCAGAGTGAAGTACGAAAGCTGCCTTCAAGCCGATAGAGGCAATTC
 TTTAGCCCTGGAAGCCACCACCAACCTCTGATGCCCCACTCAGATTGGTCTCCACTGTGCCAAAA
 AACATGGAGTCAATCTATGAGGAGCTTGTGAATCCAGAGCCCAACTTACATCCAATCAACCCCTCCG
 TC

ACGCGTACGCGGCCGCTCGAG - GFP Tag - GTTTAA

Protein Sequence:

>RG213669 representing NM_001102600
 Red=Cloning site Green=Tags(s)

MGPADSWGHHWMGILLSASLCTVWSPAAAQLTLNANPLDATQSEDVVLVPGTFRPTQIHGRSRELAKP
 SIAVSPGTAIEQKDMVTFYCTTKDVTNIHWSNNLSVVFHERMQLSKDGKILILIVQREDSGTYQCEA
 RDALLSQRSDPIFLDVKYGPDPEIKLESGVASGEVVEVMGSSMTFLAETKSHPPCAYTWFLDLSILSH
 TTRTFTIHAVSREHEGLYRCLVSNATHLSSLGTLKVRVLETLTMPQVVPSSLNLVENARSVDLTCQTVN
 QSVNVQWFLSGQPLLPSEHLQLSADNRTLIIHGLQRNDTGPYACEVWNGSRARSEPLELTINYGPDQVH
 ITRESASEMISTIEAELNSSLTLCQWAEKPGAERYRWTLHSTGEHLGEQLIIRALTWEHDGIYNCTASN
 SLTGLARSTSVLVKVVGPQSSSLSSGAIAGIVIGILAVIAVASELGYFLYIRNARRSRKTTEDPSHETS
 QPDKPEEHPTEPSESLSPEYCNISQLQGRIRVELTKLPSASRRGNSFSPWKPPPPLMPLRLVSTVVK
 NMESIYEELVNPEPNTYIQINPSV

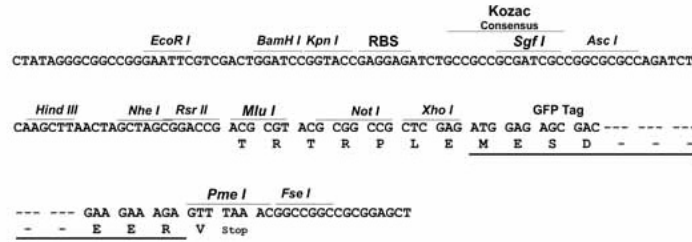
TRTRPLE - GFP Tag - V

Restriction Sites:

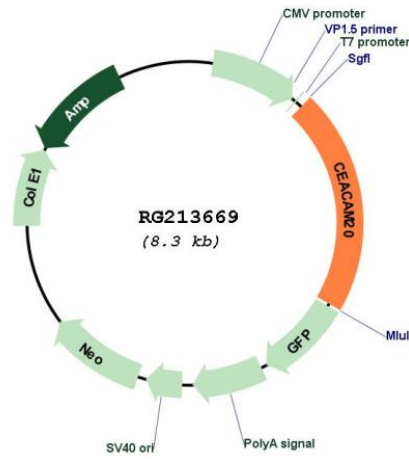
Sgfl-MluI

Cloning Scheme:

Cloning sites used for ORF Shutting:



Plasmid Map:



ACCN: NM_001102600
 ORF Size: 1752 bp

OTI Disclaimer:	The molecular sequence of this clone aligns with the gene accession number as a point of reference only. However, individual transcript sequences of the same gene can differ through naturally occurring variations (e.g. polymorphisms), each with its own valid existence. This clone is substantially in agreement with the reference, but a complete review of all prevailing variants is recommended prior to use. More info
OTI Annotation:	This clone was engineered to express the complete ORF with an expression tag. Expression varies depending on the nature of the gene.
Components:	The ORF clone is ion-exchange column purified and shipped in a 2D barcoded Matrix tube containing 10ug of transfection-ready, dried plasmid DNA (reconstitute with 100 ul of water).
Reconstitution Method:	<ol style="list-style-type: none">1. Centrifuge at 5,000xg for 5min.2. Carefully open the tube and add 100ul of sterile water to dissolve the DNA.3. Close the tube and incubate for 10 minutes at room temperature.4. Briefly vortex the tube and then do a quick spin (less than 5000xg) to concentrate the liquid at the bottom.5. Store the suspended plasmid at -20°C. The DNA is stable for at least one year from date of shipping when stored at -20°C.
RefSeq:	NM_001102600.1 , NP_001096070.1
RefSeq Size:	1773 bp
RefSeq ORF:	1755 bp
Locus ID:	125931
UniProt ID:	Q6UY09
Cytogenetics:	19q13.31
Protein Families:	Transmembrane
Gene Summary:	Together with the tyrosine-protein kinase SYK, enhances production of the cytokine CXCL8/IL-8 via the NFKB pathway and may thus have a role in the intestinal immune response. [UniProtKB/Swiss-Prot Function]