

Product datasheet for **RG213664**

NUP98 (NM_016320) Human Tagged ORF Clone

Product data:

Product Type:	Expression Plasmids
Product Name:	NUP98 (NM_016320) Human Tagged ORF Clone
Tag:	TurboGFP
Symbol:	NUP98
Synonyms:	ADIR2; NUP96; Nup98-96; NUP196
Mammalian Cell Selection:	Neomycin
Vector:	pCMV6-AC-GFP (PS100010)
E. coli Selection:	Ampicillin (100 ug/mL)
ORF Nucleotide Sequence:	>RG213664 representing NM_016320 Red=Cloning site Blue=ORF Green=Tags(s)

TTTTGTAATACGACTCACTATAGGGCGGCCGGAATTCGTCGACTGGATCCGGTACCGAGGAGATCTGCC
GCC**CGATCGCC**

ATGTTTAAACAATCATTGGAACACCCTTTGGGGTGGCACAGGTGGCTTTGGCACAACCTCAACATTTG
GACAGAATACTGGCTTTGGCACTACTAGTGGAGGGGCATTTGGAACATCTGCATTTGGTTCTAGCAACA
TACTGGAGGCTCTTTGGAAATTCACAGACTAAACCAGGAGGATTGTTTGAACCACTTCATTTAGCCAG
CCAGCTACCTCCACAAGCACTGGCTTTGGGTTTGGTACGTCAACAGGAACAGCAAATACCTTGTGGAA
CTGCAAGCACAGGACCAGTCTTCTCATCCAAAACAATGCCTTTGCACAAAATAAACCAACTGGCTT
TGGCAATTTTGAACCACTACTAGCAGTGGAGGACTCTTTGGAACCACAAATACCACTCTAATCCTTTT
GGCAGCACATCTGGCTCCCTCTTTGGGCCAAGTAGTTTTACAGCTGCTCCTACTGGGACTACTATTAAT
TTAACCTCCAACCTGGTACAGATACTATGGTCAAAGCTGGAGTTAGCACTAACATAAGTACCAAGCACCA
GTGTATTACTGCTATGAAAGAATATGAAAGCAAGTCACTAGAGGAACCTCGTTTAGAGGATTATCAGGCT
AACAGGAAGGGCCACAGAACAGGTGGGAGCAGGTACCACAACTGGCTTGTGGGTCTTCTCCAGCCA
CTTCCAGCGCAACAGGACTCTTCAGCTCCTCCACCACTAATTCAGGCTTGCATATGGTCAGAACAAAAC
TGCTTTTGAACACTAGTACAACCTGGATTTGGAACAAATCCAGGTGGTCTCTTTGGCCAACAGAATCAGCAG
ACTACCAGCTCTTCAGCAAACCTTTGGCCAGGCTACAACCAACCAAGCACTGGCTTTTCTTTGGTA
ATACCAGCACCATAGGACAGCCAAGCACCAACCCATGGGATTATTTGGAGTAACCAAGCCTCACAGCC
TGGAGGCTCTTTTGGGACAGCTACAACACCAGCACTGGGACAGCATTGGAACAGGAACAGGTCTCTTT
GGGCAGACCAATACTGGATTTGGTGTGTTGGTTCGACCTGTTTGGCAATAACAAGCTTACTACATTTG
GAAGCAGCACAACCAAGTGCACCTTCATTTGGTACAACCAAGTGGCGGGCTCTTTGGTTTTGGCACAATAC
CAGTGGGAATAGTATTTTGAAGTAACCAAGCAGCCTGGGACTCTTGAACCTGGGCTTGGTGCAGGATTT
GGAACAGCTCTTGGTGTGGACAGGCATCTTTGTTTGGGAACAACCAACCTAAGATTGGAGGGCCTCTTG
GTACAGGAGCCTTTGGGGCCCTGGATTTAATACTACGACAGCCACTTTGGGCTTTGGAGCCCCCAGGC
CCCAGTAGCTTTGACAGATCCAATGCTTCTGCTGCCAGCAGGCTGTTCTCCAGCAGCACATCAATAGT



[View online >](#)

CTAACATACTCACCTTTTGGAGACTCTCCTCTCTCCGGAATCCGATGTCAGACCCTAAGAAGAAGGAAG
 AGAGATTGAAACCAACAAATCCAGCAGCCAGAAAGGCTCTTACTACACCTACTCATTATAAACTGACACC
 CCGCCCTGCCACTAGAGTCCGGCCAAAGGCTTTACAAACAACAGGCACAGCCAAGTCACATCTCTTTGAT
 GGGCTGGATGACGATGAACCATCCCTAGCCAATGGAGCATTTCATGCCAAGAAGAGCATTAAAGAAGTTGG
 TTTTGAAGAACCTTAATAATAGCAATCTCTTTCTCCTGTTAATCGTGATTTCAGAAAATCTAGCTTACC
 ATCTGAATATCCAGAAAAATGGAGAGAGATTTAGTTTCTAAGCAAACCTGTTGATGAGAATCACCAGCAG
 GATGGAGATGAAGATTCCCTTGTTCACATTTTTATACTAACCCATTGCCAAACCTATTCTCAAACCC
 CAGAAAAGTCTGGAAATAAACACAGCAACAGCAACAGTGTGGATGATACCATTTGTCATTAAACATGCG
 TGCTGCTTTGCGAAATGGGCTGGAAGGAAGCAGTGAAGAAACGCTTTTTATGATGAGTCACTTCAGGAT
 GACCGAGAAGAAATAGAAAATAATTCTTACCATATGCACCCAGCAGGTATTATTCTCACTAAGGTTGGTT
 ACTATACTATTCCATCTATGGATGACCTTGCTAAAATTACCAATGAAAAAGGAGAGTGCATTGTCTCTGA
 TTTCACTATTGGTCGAAAGGTTATGGTCAATCTATTTTGAAGGAGATGTGAATTTGACAAATCTAAAT
 TTGGATGATATTGTGCATATCCGGAGGAAAGAAGTAGTTGTCTACTTAGATGATAACCAAAAACCACCTG
 TGGGTGAAGGGCTAAATAGGAAGGCTGAAGTTACATTGGATGGAGTTGGCCAACAGATAAAACATCTCG
 TTGTTTAAATAAGAGCCAGATCGCCTTGCTGATCAACTATGAAGGAAGATTGAAGCAGTTTCAAGG
 AAACAGGGAGCTCAATCAAAGAATACCGGCCTGAAACTGGTTCTTGGGTGTTTAAAGGCTCTCCATTTTT
 CTAAGTATGGCCTTCAGGATTCTGATGAAGAGGAGGAGGAGCATCCGTCTAAAACAGTACAAAAGAAGT
 GAAGACTGCTCCTTTGCCTCCTGCAAGCCAGACTACGCCCTTGCAGATGGCTCTTAATGGCAAACCTGCA
 CCTCCACCTCAGAGCCAGAGCCAGAGGTGGAGCAGTTAGGGAGGGTTGTGGAACGGACAGTGACATGG
 TAGATATACCCAGGAGCCAGTTTTGGATACCATGTTAGAAGAGAGCATGCCTGAGGATCAGGAACCTGT
 GTCTGCCTCAACACATATTGCATCTTCACTGGGAATTAATCCACATGTCTTACAGATCATGAAAGCATCA
 ATACTTCAAGAATACTGTTCTCCAGACTCCCATTTCAGCATCCCAGTCCGCGAAAACCTCGTTCACT
 AGTTGGTGGGTTACTACAATCAAATTTACAAGTGGAGTTTTCTTTTACCAAGTGTCTCTGTGCAAGAA
 TGTCGTACTCCCAGAGCAGCATCTTAATGAATATCCCATCCACATCCTCTTGGTCTGTCCCTCCACCCC
 TGACTTCTGTGTTCACAATGCCAGCCAGCCCTGAGGTTCCGTTGAAAACAGTGGGTACACGTAGGCA
 ACTAGGCCTAGTCCCTCGTGAAGTCTGTCACTATGGCAAGGGAAAACCTTGATGGACATGGCCCTA
 TTCATGGGACGCTCATTTCTGTTGGTTGGGGCCCAACTGGACTCTTGCTAATAGTGGAGAACAGCTGA
 ATGGCTCATGAACTAGAAAATCATCAGATTGCCGATCCATGGAGTTTGGATTCTGCCCAATCCAGT
 AGCTGTTAAACCCCTAAGTGAAGTCCCATCAAAGTTCAGTTAGAAAACTCAGTTTGGACAAAAGAAAG
 CCAGATGAAGACATGAAATATATCAGACACCTCTGGAGCTCAAATTAACACAGCAGTGTCCATGTGG
 ATGAAGTGTGCCTCTCATTGTCCCAATCTGGGAGTTGCTGTCAATTCAGTATGCAGATTGGGTAA
 AGAAGCATCAGGAGACTACCAGAAGCACAATTTGTGAAGCACTGGAGCCTGACATGGACACTATGTGAA
 GCCCTATGGGGCCACCTGAAGGAGCTTGACAGCCAGCTAAATGAACCCCGTGAATACATTCAAATTTCTGG
 AGCGAAGAAGAGCTTTCTCCCGTGGCTATCCTGTACTGCCACACCTCAGATTGAAGAGGAAGTCTCCTT
 AACCCAAAAAACAGCCCTGTGGAGGCTGATTAGCTACCTCACAGGCAAAAGGATCAGTGAAGGCTGC
 TCTCTGGCCAGCAGTCAAGGGATCATCGTCTTGTCTTCTTTATCTCAGTTTGTGGGTAGCCAGTCAG
 TCCGGGAGCTGCTCACCATGCAGTTGGTGGACTGGCATCAGCTCCAAGCAGACTCCTTCATCCAGGATGA
 GAGACTGCGCATCTTGTCTGTTGGCTGGAAAACCGGTGTGGCAGCTCTCAGAAAAGAAGCAAATAAAC
 GTGTCTCCAGTTGGATTGAAAACGCTCCCTGGCTATCCATCTTTGGTATTTGCTTCCACCAACAGCCT
 CCATTTCTAGGGCGCTCAGCATGTATGAAGAAGCATTTCAGAATACCTCTGACAGTGACAGATATGCCTG
 CTCCCACTTCTTCTGATCTGGAGGTTCTGGCTGTGTGATAGCGGAGGAGCAAAAACCTCACAGACACCA
 CTTTCGAGATGTCTGCTTTCACCTTCTAAAACCTCTACAGTGACAGACATTATGATCTCAACCAGCTGCTGG
 AGCCTCGAAGCATAACAGCAGATCCTTTGGACTACCGCTAAGCTGGCACTTGTGGGAAGTGTGAGGGC
 TCTTAACCTACACCATCTCTCAGCGCAGTGTGAAGGTGTGCTACAGGCCAGTTACGCTGGCCAGCTTGAA
 AGTGAAGGGCTCTGGGAGTGGGCCATCTTTGCTCCTCTGCACATTGACAACCTCAGGCATACGTGAGAAGG
 CTGTTTCGAGAGCTGCTTACCCGGCACTGCCAGCTGTTGGAGACCCCTGAATCTTGGGCTAAAGAGACTTT
 CCTTACCCAGAAGCTCCGTGTACCTGCCAAATGGATCCACGAGGCCAAAGCTGTGCGAGCACACATGGAA
 TCTGACAAGCACTTAGAGGCCCTTTGCTTATTTAAGGCTGAGCACTGGAACCGCTGCCACAAGCTCATCA
 TCCGACACTTAGCTTCTGATGCCATCATTAATGAGAACTATGACTACCTGAAGGGGTTCTTGAAGACCT
 GGCACCTCCAGAGCGCAGCAGCCTAATTCAGGATTGGGAAACATCTGGGCTTGTTTACCTGGACTATATT
 AGAGTCATTGAAATGCTCCGCCATATACAGCAGGTGGATTGCTCAGGTAATGACCTGGAGCAGTTACACA

TCAAAGTGACTTCACTGTGCAGTCGGATAGAGCAGATTCACTGTTACAGTGCTAAAGATCGCCTGGCTCA
 GTCAGACATGGCCAAACGTGTAGCCAACCTGCTGCGCGTGGTGTGCTGAGTCTGCATCATCCTCCTGATAGA
 ACCTCCGACTCAACACCAGACCTCAGCGAGTCCCTTTGCGCCTCTTGGCTCCCCACATTGGCCGGCTTC
 CCATGCCTGAGGACTATGCCATGGACGAACTGCGCAGCCTTACCCAGTCTATCTGCGGAACTGGCTGT
 TGGGAGCCTG

ACGCGTACGCGGCCGCTCGAG – GFP Tag – GTTTAA

Protein Sequence:

>RG213664 representing NM_016320
 Red=Cloning site Green=Tags(s)

MFNKSFGTTPFGGGTGGFETTSTFGQNTGFGTSSGAFGTSAFGSSNNTGGLFGNSQTKPGGLFGTSSFSQ
 PATSTSTGFGFGTSTGTANTLFGTASTGTSLSFSSQNNFAQNKPTGFNGFGTSTSSGGLFGTTNTTNNPF
 GSTSGSLFGPSSFTAAPTGTTIKFNPTGDTMTVKAGVSTNISTKHQCITAMKEYESKSLEELRLEDYQA
 NRKGPQNVQVAGTTTGLFGSSPATSSATGLFSSSTNSGFAYGQNKTAFTSTTGFGTNPGLFGQQNQ
 TTSLSFSKPFQATTTQNTGFSFGNTSTIGQPSTNTMGLFGVTQASQPGGLFGTATNTSTGTAFTGTGLF
 GQTNTGFGAVGSTLFGNNKLTTFGSSTTSAPSGTSSGGLFGFGTNTSGNSIFGSKPAPGLTGLGAGF
 GTALGAGQASLFGNNQPKIGGPLGTGAFGAPGNTTTATLFGGAPQAPVALTDPNASAAQAVLQQHINS
 LTYSPFGDSPLFRNPMSDPKKEERLKPNTNPAQKALTPPTHYKLTTPRATRVPRKALQTTGTAKSHLFD
 GLDDDEPSLANGAFMPKKSIIKLVKLNNSNLFSPVNRDSENLASPSEYPENGERFSFLSKPVDENHQQ
 DGDEDSLVSIFYTNPPIAKPIPTPESAGNKHSNSNSVDDTIVALNMRAALRNGLEGSSEETSFHDESLQD
 DREEIENNSYHMPAGIILTKVGYTIPSMDDLAKITNEKGECIVSDFTIGRKGYSIYFEGDVNLTNLN
 LDDIVHIRRKEVVVYLDNQQKPPVGEGLNRKAEVTLDGWVPTDKTSRCLIKSPDLADINYEGRLEAVSR
 KQGAQFKEYRPETGSWVFKVSHFSKYGLQDSDEEEHPSKTSTKLLKTAPLPPASQTTPLQMALNGKPA
 PPPQSQSPEVEQLGRVVELDSDMVDITQEPVLDTMLEESMPEDQEPVSASTHIASSLGINPHVLQIMKAS
 LLTDEEDVDMALDQRFSLPSKADTSQEICSPRLPISASHSSKTRSLVGGLLQSKFTSGAFLSPSVSQE
 CRTPRAASLMNIPSTSSWSVPPPLTSVFTMPSPAPEVPLKTVGTRRQLGLVPREKSVTYGKGLLMDMAL
 FMGRSFRVWGPWNWTLANSGEQLNGSHELENHQIADSMFGLPNPVAVKPLTESPFKVHLEKLSLRQRK
 PDEDMKLYQTPLELKLKHSVHVDELCPILVPNLGVAVIHDYADWVKEASGDLPEAQIVKHWSLTWTLCE
 ALWGHLEKELDSQLNEPREYIQLERRRAF SRWLSCTATPQIEEEVSLTQKNSPVEAVFSYLTGKRISEAC
 SLAQSGDHRLLALLSQFVGSQSVRELLTMQLVDWHQLQADSF IQDERLRI FALLAGKPVWQLSEKKQIN
 VCSQLDWKRS LAIHLWYLLPPTASISRALSMYEEAFQNTSDSDRYACSPLEPSYLEGSGCVIAEEQNSQTP
 LRDVCFHLLKLYSDRHYDLNQLLEPRISITADPLDYRLSWHLWEVLRALNYTHLSAQCEGLVQASYAGQLE
 SEGLWEWAIFVLLHIDNSGIREKAVRELLTRHCQLLETPESWAKETFLTQKLRVPAKWIHEAKAVRAHME
 SDKHLEALCLFKAHWNRRCHKLIIRHLASDAIINENYDYLKGFLEDLAPPERSL IQDWETSGLVYLDYI
 RVIEMLRHIQQVDCSGNDLEQLHIKVTSLCSRIEQIQCYSAKDRLAQSDMAKRVANLLRVVLSLHHPDR
 TSDSTDPQRVPLRLLAPHIGRLPMPEDYAMDELRSLTQSYLRELA VGSL

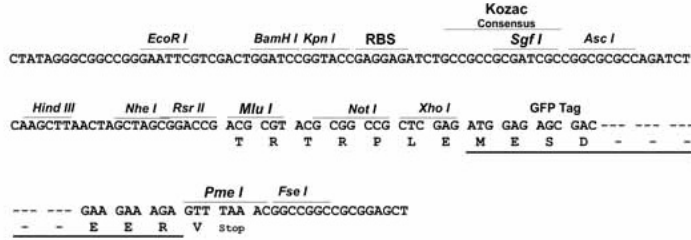
TRTRPLE – GFP Tag – V

Restriction Sites:

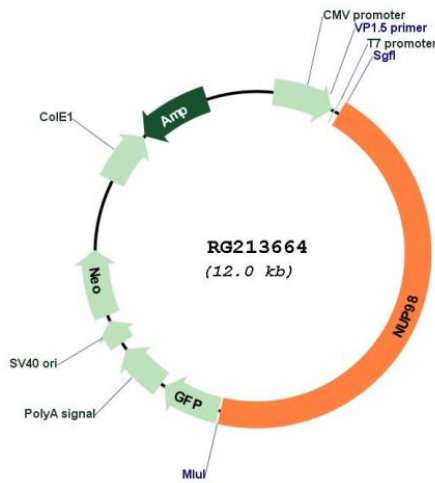
Sgfl-Mlul

Cloning Scheme:

Cloning sites used for ORF Shutting:



Plasmid Map:



ACCN:

NM_016320

ORF Size:	5400 bp
OTI Disclaimer:	The molecular sequence of this clone aligns with the gene accession number as a point of reference only. However, individual transcript sequences of the same gene can differ through naturally occurring variations (e.g. polymorphisms), each with its own valid existence. This clone is substantially in agreement with the reference, but a complete review of all prevailing variants is recommended prior to use. More info
OTI Annotation:	This clone was engineered to express the complete ORF with an expression tag. Expression varies depending on the nature of the gene.
Components:	The ORF clone is ion-exchange column purified and shipped in a 2D barcoded Matrix tube containing 10ug of transfection-ready, dried plasmid DNA (reconstitute with 100 ul of water).
Reconstitution Method:	<ol style="list-style-type: none">1. Centrifuge at 5,000xg for 5min.2. Carefully open the tube and add 100ul of sterile water to dissolve the DNA.3. Close the tube and incubate for 10 minutes at room temperature.4. Briefly vortex the tube and then do a quick spin (less than 5000xg) to concentrate the liquid at the bottom.5. Store the suspended plasmid at -20°C. The DNA is stable for at least one year from date of shipping when stored at -20°C.
RefSeq:	NM_016320.5
RefSeq Size:	6850 bp
RefSeq ORF:	5403 bp
Locus ID:	4928
UniProt ID:	P52948
Cytogenetics:	11p15.4
Domains:	Nucleoporin_FG, Nucleoporin2
Protein Families:	Druggable Genome

Gene Summary:

Nuclear pore complexes (NPCs) regulate the transport of macromolecules between the nucleus and cytoplasm, and are composed of many polypeptide subunits, many of which belong to the nucleoporin family. This gene belongs to the nucleoporin gene family and encodes a 186 kDa precursor protein that undergoes autoproteolytic cleavage to generate a 98 kDa nucleoporin and 96 kDa nucleoporin. The 98 kDa nucleoporin contains a Gly-Leu-Phe-Gly (GLGF) repeat domain and participates in many cellular processes, including nuclear import, nuclear export, mitotic progression, and regulation of gene expression. The 96 kDa nucleoporin is a scaffold component of the NPC. Proteolytic cleavage is important for targeting of the proteins to the NPC. Translocations between this gene and many other partner genes have been observed in different leukemias. Rearrangements typically result in chimeras with the N-terminal GLGF domain of this gene to the C-terminus of the partner gene. Alternative splicing results in multiple transcript variants encoding different isoforms, at least two of which are proteolytically processed. Some variants lack the region that encodes the 96 kDa nucleoporin. [provided by RefSeq, Feb 2016]