

Product datasheet for **RG213644**

SARA (ZFYVE9) (NM_007324) Human Tagged ORF Clone

Product data:

Product Type:	Expression Plasmids
Product Name:	SARA (ZFYVE9) (NM_007324) Human Tagged ORF Clone
Tag:	TurboGFP
Symbol:	ZFYVE9
Synonyms:	MADHIP; NSP; PPP1R173; SARA; SMADIP
Mammalian Cell Selection:	Neomycin
Vector:	pCMV6-AC-GFP (PS100010)
E. coli Selection:	Ampicillin (100 ug/mL)
ORF Nucleotide Sequence:	>RG213644 representing NM_007324 Red=Cloning site Blue=ORF Green=Tags(s)

TTTTGTAATACGACTCACTATAGGGCGGCCGGAATTCGTCGACTGGATCCGGTACCGAGGAGATCTGCC
GCC**CGATCGCC**

ATGGAGAATTACTCCAAGCAGAAGCTTACAACCTGGACAAGGTGTTAGATGAATTTGAACAAAACGAAG
ATGAAACAGTTTCTTCTACTTTATTGGATACAAAGTGAATAAGATTCTAGATCCCCCTTCTCACC
GCTGTCATTTAACCTACTTTGGCCAGTGTGAATGAATCTGCAGTTTCTAATGAGTCACAACCACA
ACTGAAAGTCTTCCCTGGCTCATTGAGTCCCCTGACCACAGAGGAAGAGGATCACTGTGCTAAT
GGACAGGACTGTAATCTAAATCCAGAGATTGCCACAATGTGGATTGATGAAAATGCTGTTGCAGA
AGACCAGTTAATTAAAGAAAATATAGTTGGGATGATCAATGCAGTGTGTTGAAGTGGGAGAGA
AAGAAATGTGGAAACCTGGCTGTCTGCCAGATGAGAAGAATGTTCTTGTGTAGCCGTCATGC
ATAACTGTGATAAAAAGGACATTACAAAACGATTTACAGGATTGTAATAATTATAATAGTCAAT
CCCTTATGGATGCTTTTAGCTGTTCACTGGATAATGAAAACAGACAACTGATCAATTTAGTTT
TAGTATAAATGAGTCCACTGAAAAAGATATGAATTCAGAGAAACAAATGGATCCATTGAATAG
ACCGAAAAACAGAGGGGAGATCTGTTAACCATCTGTGTCTACTTTCATCTGATAGTCTAGCC
AGTGTCTGTTCCCCTTCCCAATTAAGGATGACGGAAGTATAGGTAGAGACCCCTCATGTCTGC
GATTACAAGTTAACGTTGATTTCAGTAATCTCATCCCAGGGAACAGATGGATGTCCTGCTGT
TAAAAAGCAAGAGAATAATACCAGATGAGGACCTCACTGGCAAAATCAGTCTCCTAGGACAG
ATCTAGGGAGTCCAAATTCCTTTCCACATGAGTGAGGGGATTTTGATGAAAAAAGAGCCAGC
AGAGGAGAGCACCAGTGAAGAATCCCTCCGGTCTGGTTACCTTTGCTTCTCAAACCAGACATG
CCTAATGGGTCTGGAAGGAATAATGACTGTGAACGGTGTTCAGATTGCCTTGTGCCTAATGA
AGTTAGGGCTGATGAAAAAGAGGTTATGAACATGAAGAACTCTTGGCACTACAGAATTCCTT
AATATGACAGAGCATTCTCTGAATCTCAGGACATGACTAATTGGAAGTTGACTAACTAAATG
AGATGAATGATAGCCAAGTAAACGAAGAAAAGGAAAGTTTCTACAGATTAGTCAGCCTGAGG
ACACTAATGGTGATAGTGGAGGACAGTGTGTTGGATTGGCAGATGCAGGCTAGATTTAAAGG
AACTTGCATTAGTAAAGTGAAGAATGTGATTTCTCCACTGTTATAGACACCAGCAGCAAAT
TATCTATCTAATGTTGTGATTCTATGGAATGCAAGACCCAGGTGTTCTTTT



[View online >](#)

GTTCCAAAGACTTTACCCTCAAAGAAGATTTCAGTAAACAGAAGAAAAAGAAATAGAGGAAAAGCAAGTCAG
AATGCTACTCAAATATTTATGAACAGAGAGGAAATGAGGCCACAGAAGGGAGTGGACTACTTTTAAACAG
CACTGGTGACCTAATGAAGAAAAATTTTACATAAATTTCTGTAGTCAAGTTCCATCAGTGCTTGGGCAA
TCTTCCCCAAGGTAGTAGCAAGCCTGCCATCTATCAGTGTTCTTTTGGTGGTGAAGACCCAAGCAAC
CTTCTAATCTTAACTTCAAATTCAAAAGCCATTATCAGACCATTACAAAATGACTTTCCTGCAAAACAG
TGGAAATAACTAAAAATAAAAATGATATTCTGGGAAAACAAAATAGGGGAAAACCTCAGCAACCAAT
GTATGCAGTCCATCTTTGGGAAACATCTAATGTCGATACAAAATGGGGAACATTTAGAAAAGTTATGAGG
CTGAGATCTCCACTAGACCATGCCTTGCAATTAGCTCCAGATAGCCAGATAATGATCTCAGAGCTGGTCA
GTTTGGAAATTTCTGCCAGAAAGCCATTCACCACCTCTGGGTGAGGTGGCTCCAGATAGGGTACCGATTCT
CAGGCTCCAAATGTCATGAAATGTGAAGCCAGGTTTACATTACCCAAAAGGAGGCATCACTGCAGAGCAT
GTGGGAAGGTTTTCTGTGCTTCTGCTGTAGCCTGAAATGTAACTGTTATACATGGACAGAAAAGGAAGC
TAGAGTGTGTGAATCTGCCATTCAGTGCTAATGAATGTGGCTCAGCCCAGAGAGCAGAGGCGAGTTTGG
TTTGTGTAGGGATCTTGCCCAATGGAGAAGTTGCTGATGCAGCCAAATTAACAATGAATGGAACCTCCT
CTGCAGGAACCTGGCTGTGTACACGACCCAGTCAAGCCAGTAACTACCAGTCTCTACCAGCAGAGAC
GGATATTTGTCTATTCTCTGGGAGTATAACTCAGGTTGGAAGTCTGTTGGAAGTGAATGAATCTTATT
CCTGAAGATGGCCTTCTCCCATTTCTATCTCCACTGGTGTAAAAGGAGACTATGCTGTGGAAGAGAAAAC
CATCACAGATTTAGTAATGCAGCAGTTGGAGGATGGTGGCCCTGACCCACTTGTATTTGTTTTAAATGC
AAATTTGTGTCAATGGTTAAAATTTGAAAATATGTGAACAGGAAGTGTGGTGTTCACAACCAAGGGA
ATGCATGCAGTGGGTCAGTCTGAGATAGTCACTTCTACAGTGTTTACCGGATGAAAAGTGTGGCCAA
AGGATATCTTAACTACTTTGTGCGACTTTATCGGGATGCTCTGGCAGGGAATGTGGTGAAGCACTTGGG
ACATTCCTTCTCAGTCAAAGTTTCTTGGCAGTAAAGAACATGGTGGATTCTTATATGTGACATCTACC
TACCAGTCACTGCAAGACCTAGTACTCCCAACCCACCTTACTTGTGGGATTCTTATCCAGAAAATGGG
AAACTCCTTGGGCTAAAGTATTTCTATCCGCTGATGTTGAGACTTGGAGCTGAATATCGACTTTATCC
ATGCCCCACTATTCAGTGTGAGATTTTCGGAAGCCATTGTTTGGAGAGACGGGGCATACCATCATGAATCTT
CTTGACAGACTTCAGAAATACCAGTATACCTTGCCAGTAGTTCAAGGTTTGGTGGTTGATATGGAAGTTC
GGAAAAC TAGCATCAAAATCCCAGCAACAGATACAATGAGATGATGAAAGCCATGAACAAGTCCAATGA
GCATGTCTGGCAGGAGGTGCCTGCTTCAATGAAAAGGCAGACTCTCATCTTGTGTGTACAGAATGAT
GATGGAACATATCAGACCCAGGCTATCAGTATTCACAATCAGCCCAGAAAAGTACTGGTGGCAGTTTCT
TTGTGTTCAAGTGGCGCTCTGAAATCCTCTTCTGGATACCTTGCCAAGTCCAGTATTGTGGAAGATGGTGT
TATGGTCCAGATTACTGCAGAGAACATGGATTCTTGGAGGAGGACTGCGAGAGATGAAGGACTTCACC
ATCACCTGTGGGAAGGCGGACGCGGAGGAACCCAGGAGCACATCCACATCCAGTGGGTGGATGATGACA
AGAACGTTAGCAAGGGTGTGTAAGTCCATAGATGGGAAGTCCATGGAGACTATAACAAATGTGAAGAT
ATTCATGGATCAGAATATAAAGCAAATGGAAAAGTAATCAGATGGACAGAGGTGTTTTCTAGAAAAC
GATGACCAGCACAAATGCCTCAGTGATCCTGCAGATCACAGTAGATTGACTGAGCATGTTGCCAAAGCTT
TTTGCCTTGTCTCTGTCTCACCTGAACTTCTGAAGGAAGATGGAATGACCAAACCTGGGACTACGTGT
GACACTTGACTCAGATCAGGTTGGCTATCAAGCAGGGAGCAATGGCCAGCCCTTCCCTCGCAGTACATG
AATGATCTGGACAGCGCCTTGGTGCCGGTATCCATGGAGGGCTGCCAGCTTAGTGAGGGCCCCGTTG
TCATGGAACATCATTTTTATTTCTGAAAACATCGTA

ACGCGTACGCGGCCGCTCGAG – GFP Tag – GTTTAA

Protein Sequence: >RG213644 representing NM_007324
 Red=Cloning site Green=Tags(s)

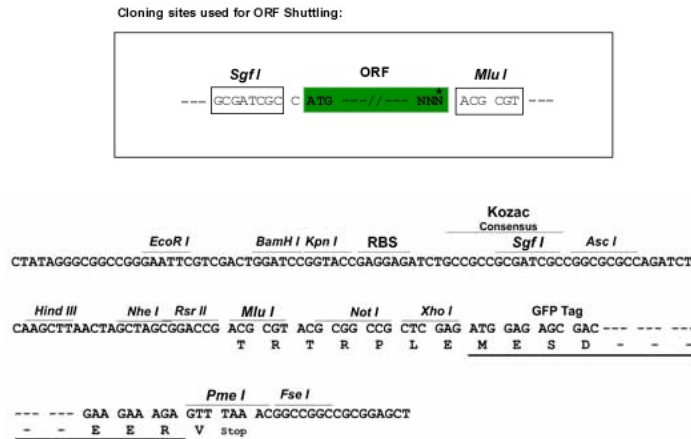
MENYFQAEAYNLDKVLDEFEQNEDETVSSTLLDTKWNKILDPPSHRLSFNPTLASVNESAVSNESQPQLK
 VFSLAHSAPLTTTEEDHCANGQDCNLNPEIATMWIDENAVAEDQLIKRNYSWDDQCSAVEVGEKKCGNLA
 CLPDEKNVLLVVAVMHNC DKRTLQNDLQDCNNYNSQSLMDAFSCSLDNENRQTDQF SFSINESTEKDMNSE
 KQMDPLNRPKTEGRSVNHL CPTSSDSLAVCSVPSQLKDDGSI GRDPSMSAITSLTVDSVSISSQGTGCPA
 VKKQENYIPDEDLTGKISSPRTL D LGSPNSF SHMSEGILMKKEPAEESTTEESLRSGLPLLLKPDMPNGSG
 RNNDCERCSDCLVPNEVRADENEGYEHEETLGTTEFLNMTEHFSSESQDMTNWKLTKLNEMNDSQVNEEKE
 KFLQISQPEDTNGDSGGQCVGLADAGLDLKGTCISESEECDFSTVIDTPAANYLSNGCDSYGMQDPGVSF
 VPKTLPSKEDSVTEEKEIEESKSECYSNIYEQRGNEATEGSGLLLNSTGDLMKKNYLHNFCSQVPSVLGQ
 SSPKVVASLPSISVPPFGGARPQPSNLKLIQPKPLSDHLQNDFFPANSNNTKNNDILGKAKLGENSATN
 VCSPSLGNISNVDNNGEHELESYAEISTRPCLALAPDSPDNDLRAGQFGISARKPFTTLGEVAPVWVPDS
 QAPNCKCEARFTFKRRHHCRACGKVFCASSCSLKCKLLYMDRKEARVCVICHSVLMNVAQPREQRRVW
 FADGILPNGEVADA AKLTMNGTSSAGTLAVSHDPVKPVTT SPLPAETDICLFGSITQVGSVPVGSAMNLI
 PEDGLPPIILISTGVKGDYAVEEKPSQISVMQQL EDGGPDLVFLNANLLSMVKIVNYVNRKCWCFTTKG
 MHAVGQSEIVILLQCLPDEKCLKPKDIFNHVQLYRDALAGNVVSNLGH SFFSQSFLGSKHEGGFLYVTST
 YQSLQDLVLP TTPYLFGILIQWETPWAKVFP IRLMLRLGAEYRLYPCPLFSVRFKPLFGETGHTIMNL
 LADFRNYQYTL PVVQGLVVDMEVRKTSIKIPSNRYNEMMKAMNKSNEHVLGAGACFNEKADSHLVCVQND
 DGN YQTQAISIHNQPRKVTGASFFVFSGALKSSSGYLAKSSIVEDGVMVQITAENMDSL RQALREMKDFT
 ITCGKADAEEPQEHIIHQWVDDDKNVSKGVVSPIDGKSMETITNVKIFHGSEYKANGKVI R WTEVFFLEN
 DDQHNC LSDPADHSRLTEHVAKAFCLALCPHLKLLKEDGMTKLGRLVTL DSDQVGYQAGSNGQPLPSQYM
 ND LDSALVPVIHGGACQLSEGPVVMELIFYILENIV

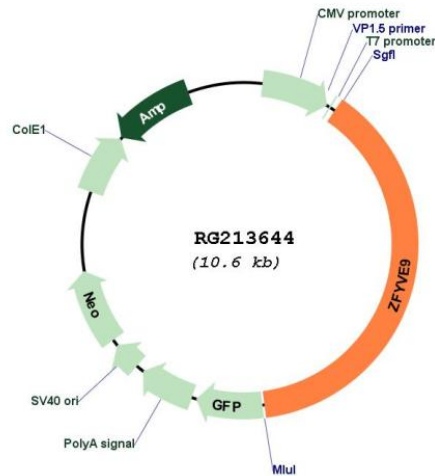
TRTRPLE - GFP Tag - V

Restriction Sites:

Sgfl-MluI

Cloning Scheme:



Plasmid Map:


ACCN: NM_007324

ORF Size: 5030 bp

OTI Disclaimer: The molecular sequence of this clone aligns with the gene accession number as a point of reference only. However, individual transcript sequences of the same gene can differ through naturally occurring variations (e.g. polymorphisms), each with its own valid existence. This clone is substantially in agreement with the reference, but a complete review of all prevailing variants is recommended prior to use. [More info](#)

OTI Annotation: This clone was engineered to express the complete ORF with an expression tag. Expression varies depending on the nature of the gene.

Components: The ORF clone is ion-exchange column purified and shipped in a 2D barcoded Matrix tube containing 10ug of transfection-ready, dried plasmid DNA (reconstitute with 100 ul of water).

Reconstitution Method:

1. Centrifuge at 5,000xg for 5min.
2. Carefully open the tube and add 100ul of sterile water to dissolve the DNA.
3. Close the tube and incubate for 10 minutes at room temperature.
4. Briefly vortex the tube and then do a quick spin (less than 5000xg) to concentrate the liquid at the bottom.
5. Store the suspended plasmid at -20°C. The DNA is stable for at least one year from date of shipping when stored at -20°C.

RefSeq: [NM_007324.4](#)

RefSeq Size: 4753 bp

RefSeq ORF: 4101 bp

Locus ID: 9372

UniProt ID: [O95405](#)

Cytogenetics: 1p32.3

Domains: FYVE

Protein Pathways: TGF-beta signaling pathway

Gene Summary: This gene encodes a double zinc finger motif-containing protein that participates in the transforming growth factor-beta (TGFB) signalling pathway. The encoded protein interacts directly with SMAD2 and SMAD3, and recruits SMAD2 to the TGFB receptor. There are multiple pseudogenes for this gene on chromosomes 2, 15, and X. Alternative splicing results in multiple transcript variants. [provided by RefSeq, Mar 2013]