

Product datasheet for **RG213624**

SEZ6L (NM_021115) Human Tagged ORF Clone

Product data:

Product Type:	Expression Plasmids
Product Name:	SEZ6L (NM_021115) Human Tagged ORF Clone
Tag:	TurboGFP
Symbol:	SEZ6L
Mammalian Cell Selection:	Neomycin
Vector:	pCMV6-AC-GFP (PS100010)
E. coli Selection:	Ampicillin (100 ug/mL)



[View online »](#)

ORF Nucleotide Sequence:

>RG213624 representing NM_021115
 Red=Cloning site Blue=ORF Green=Tags(s)

TTTTGTAATACGACTCACTATAGGGCGGCCGGGAATTCGTCGACTGGATCCGGTACCGAGGAGATCTGCC
 GCC**CGGATCGCC**

ATGCCCGCGGCCCGGCCCGCCCGCGGGACTCCGCGGATCTCGCTGTTCTCGCTCTGCTCCTGGGGA
 GCCCGGCCGAGCGCTGGAGCGAGATGCTCTCCGAGGGAGATGCTAGCCCTTTGGGTCCTTACCTCCT
 GCCCTCAGGAGCCCCGGAGAGAGCAGTCTGGCAAAGAGCACCTGAAGAGAGAGTGGTAAACAGCGCCC
 CCCAGTTCCTCACAGTCGGCGGAAGTGCTGGGCGAGCTGGTGGTGGATGGGACCGCACCTCTGCACATC
 ACGACATCCCAGCCCTGTACCCTGCTCCAGAGGAGGCCGCCCAAGCACGCCTTCCCCCAAGAA
 GAAACTGCCTTCGCTCAAGCAGGTGAATCTGCCAGGAAGCAGCTGAGGCCCAAGGCCACCTCCGCAGCC
 ACTGTCCAAGGGCAGGGTCCCAGCCAGCGTCCCAGGGCCTAGATCTCTCTCTCTCCACGGAGAAGC
 CTGGCCACCGGGGACCCGACCCCATCGTGGCCTCCGAGGAGCATCAGAAGTCCCTTTGGCTGGA
 CCGAAAGGAGAGTGGGTCCCTACAACACCCGACCCCTGCAAACTCCCTTCACTTCGCAGCCCTAT
 GTGGCCACACACTCCCCAGAGGCCAGAACCCGGGAGCCTGGGCTGACATGGCCAGGAGGCCCC
 AGGAGGACACCAGCCCATGGCCCTGATGGACAAGGTGAGAATGAGCTGACTGGGTGAGCTCAGAGGA
 GAGCCAGGAGACCACTACCTCCACCATTACACCACCGGTATCACCACCGAGCAGGCACCAGCTCTC
 TGCAGTGTGAGCTTCTCAATCTGAGGGGTACATTGACTCCAGCGACTACCCACTGCTGCCCTCAACA
 ACTTTCTGGAGTGACATACAACGTGACAGTCTACTGGCTATGGGGTGGAGCTCCAGGTGAAGAGTGT
 GAACCTGTCCGATGGGAACTGCTCTCCATCCGCGGGTGGACGGCCCTACCTGACCGTCTGGCCAA
 CAGACTCCTGGTGGAGGGCAGGTAATCCGAAGCCCCACCAACACCATCTCCGTCTACTCCGGACCT
 TCCAGGACGACGGCTTGGGACCTTCCAGCTTCACTACCAGCCCTCATGCTGAGCTGCAACTTTCCCG
 CCGGCTGACTCTGGGGATGTACGGTGTGACCTGCCTGACTCAGGTGGGTGGCCCACTTCACTGCCAC
 CTGGGCTATGAGCTCCAGGGCGTAAGATTCTGACATGCATCAATGCCTCCAAGCCGCACTGGAGCAGCC
 AGGAGCCCATCTGCTCAGCTCCTGTGGAGGGCAGTGCACAATGCCACCATCGGCCGCTCCTCTCCCC
 AAGTTACCCTGAAAACCAATGGGAGCCAATTCTGCATCTGGACGATTGAAGCTCCAGAGGGCCAGAAG
 CTGCACCTGCACCTTGGAGGCTGTTGCTGCATGACAAGGACAGGATGACGGTTCACAGCGGGCAGACCA
 ACAAGTCAGCTTCTCTACGACTCCCTCAAACCGAGAGTGTCCCTTTGAGGGCTGCTGAGCGAAGG
 CAACACCATCCGATCGAGTTCACGTCCGACCAGGCCGGCGGCTCCACCTTCAACATCCGATTTGAA
 GCGTTTGAAAAGGCCACTGCTATGAGCCCTACATCCAGAATGGGAATCACTACATCCGACCCGACCT
 ATAACTTTGGGACTATAGTGGAGTTCACCTGCGACCCCGCCACTCCCTGGAGCAGGGCCCGCCATCAT
 CGAATGCATCAATGTGCGGGACCCATACTGGAATGACACAGAGCCCTGTGCAGAGCCATGTGTGGTGGG
 GAGCTCTCTGCTGTGGTGGGGTGGTATTGTCCCCAACTGGCCCGAGCCCTACGTGGAAGGTGAAGATT
 GTATCTGGAAGATCCACGTGGGAGAAGAGAAACGGATCTTCTTAGATATCCAGTTCCTGAATCTGAGCAA
 CAGTGACATCTTGACCATCTACGATGGCGACGAGGTGATGCCCCACATCTGGGGCAGTACCTTGGGAAC
 AGTGGCCCCAGAACTGTACTCTCCACGCCAGACTTAACCATCCAGTTCATTCGGACCCCTGCTGGCC
 TCATCTTTGAAAAGGCCAGGATTTATCATGAACTACATAGAGGTATCAAGGAATGACTCCTGCTCGGA
 TTTACCCGAGATCCAGAATGGCTGGAAAACCACTTCTCACACGGAGTTGGTGGGGAGCCAGAATCACC
 TACCAGTGTGACCCCGCTATGACATCGTGGGAGTGCACCCCTACCTGCCAGTGGGACCTCAGCTGGA
 GCAGCGACCCCATTTTGTGAGAAAATTATGTAATGACCCGACCCGGAGAGGTGGATCACTCGACCCG
 CTTAATTTGCGATCCTGTGCTGCTGGTGGGACCACCATCCAATACACCTGCAACCCCGTTTTGTGCTT
 GAAGGGAGTCTCTTCTGACCTGCTACAGCCGTGAAACAGGGACTCCCATCTGGACGCTCTCGCTGCCCC
 ACTGCGTTTCGGAGGAGTCCCTGGCATGTGACAACCCAGGGCTGCCTGAAAATGGATACCAATCCTGTA
 CAAGCGACTCTACCTGCCAGGAGTCCCTCACCTTATGTGCTACGAAGGCTTTGAGCTCATGGGTGAA
 GTGACCATCCGCTGCATCCTGGACAGCCATCCCAGTGAACGGGCCCTGCCCGTGTGAAAGTTAATC
 AAGACAGTTTTGAACATGCTTTAGAAGTAGCAGAAGCGGCAGCAGAGACGTCGCTGGAAGGGGGAAAT
 GGCCCTGGCTATCTTATCCCGTCTCATCTCTTACTGCTGGGAGGAGCCTACATTTACATCACA
 AGATGTCGCTACTATTCCAACCTCCGCCTGCTCTGATGTAATCCACCCCTACAGCCAGATCACCGTGG
 AAACCGAGTTTGACAACCCATTTACGAGACAGGGGAAACAGAGAGTATGAGGTTTCTATC

ACGCGTACGCGGCCGCTCGAG – GFP Tag – GTTTAA

Protein Sequence: >RG213624 representing NM_021115
 Red=Cloning site Green=Tags(s)

MPAARPPAAGLRGISLFLALLLGSAAAALERDALPEGDASPLGPYLLPSGAPERGSPGKEHPEERVVTAP
 PSSSQSAEVLGELVLDGTAPSAHHDIPALSPLLPEEARPKHALPPKKLPSLKQVNSARKQLRPKATSAA
 TVQRAGSQPASQGLDLLSSSTEKPGPPGDPPIVASEEASEVPLWDRKESAVPTTPAPLQISPFTSQPY
 VAHTLPQRPEPEPGEPPDMAQEAPQEDTSPMALMDKGENELTGSASEESQETTTSTIITTTVITTEQAPAL
 CSVSFSNPEGYIDSSDYPLLPLNNFLECTYNYVTYTYGYGVELQVKSVNLSDGELLSIRGVDGPTLTVLAN
 QTLLEVGQVIRSPNTNTISVYFRTFQDDGLGTFQLHYQAFMLSCNFRRPDSGDVTVMDLHSGVVAHFHCH
 LGYELQGAKILTCINASKPHWSSQEPICSAPCGGAVHNATIGRVLSPSPENTNGSQFCIWTIEAPEGQK
 LHLHFERLLLHDKDRMTVHSGQTNKSALLYDSLQTESVPFEGLLSEGNTIRIEFTSDQARAASTFNIRFE
 AFEKGHCYEPYIQNGNFTTSDPTYNIGTIVEFTCDPGHSLEQGPATIECINVRDPYWNDTEPLCRAMCGG
 EL SAVAGVVLSPNWPEPYVEGEDCIWKIHVGEKRIFLDIQFLNLSNSDILTIYDGDEVMPHILGQYLGN
 SGPQKLYSSTPDLTIQFHSDPAGLIFGKGQGFIMNYIEVSRNDSDDLPEIQNGWKTTSHTELVRGARIT
 YQCDPGYDIVGSDTLTCQWDLWSSSDPPFCEKIMYCTDPGEVDHSTRLISDPVLLVGTTIQYTCNPGFVL
 EGSLLTCYSRETGTPIWTSRLPHCVSEESLACDNPGLPENGYQILYKRLYLPGESLTFMCYEGFELMGE
 VTIRCILGQPSHWNGPLPVCKVNQDSFEHALVEAEAAETSLEGGNMLAIFIPVLIISLLLGGAYIYT
 RCRYSNLRLPLMYSHPYSQITVETFDNPIYETGETREYEVSI

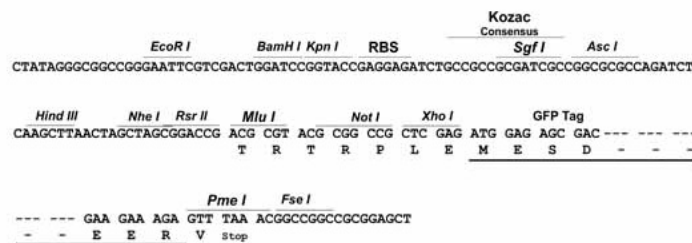
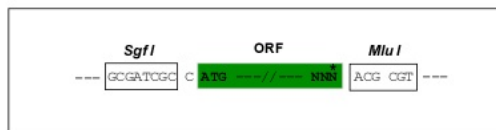
TRTRPLE – GFP Tag – V

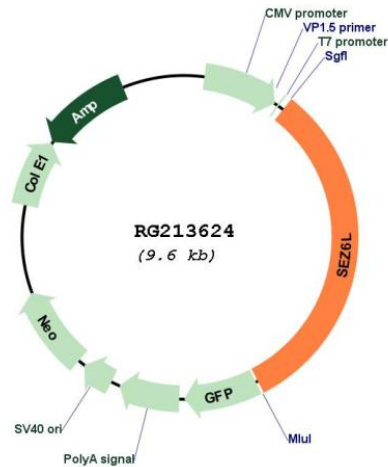
Restriction Sites:

SgfI-MluI

Cloning Scheme:

Cloning sites used for ORF Shutting:



Plasmid Map:


ACCN: NM_021115

ORF Size: 3072 bp

OTI Disclaimer: The molecular sequence of this clone aligns with the gene accession number as a point of reference only. However, individual transcript sequences of the same gene can differ through naturally occurring variations (e.g. polymorphisms), each with its own valid existence. This clone is substantially in agreement with the reference, but a complete review of all prevailing variants is recommended prior to use. [More info](#)

OTI Annotation: This clone was engineered to express the complete ORF with an expression tag. Expression varies depending on the nature of the gene.

Components: The ORF clone is ion-exchange column purified and shipped in a 2D barcoded Matrix tube containing 10ug of transfection-ready, dried plasmid DNA (reconstitute with 100 ul of water).

Reconstitution Method:

1. Centrifuge at 5,000xg for 5min.
2. Carefully open the tube and add 100ul of sterile water to dissolve the DNA.
3. Close the tube and incubate for 10 minutes at room temperature.
4. Briefly vortex the tube and then do a quick spin (less than 5000xg) to concentrate the liquid at the bottom.
5. Store the suspended plasmid at -20°C. The DNA is stable for at least one year from date of shipping when stored at -20°C.

RefSeq: [NM_021115.5](#)

RefSeq Size: 3424 bp

RefSeq ORF: 3075 bp

Locus ID: 23544

UniProt ID: [Q9BYH1](#)

Cytogenetics:	22q12.1
Domains:	CCP, CUB
Protein Families:	Druggable Genome, Transmembrane
Gene Summary:	May contribute to specialized endoplasmic reticulum functions in neurons.[UniProtKB/Swiss-Prot Function]