

Product datasheet for **RG213610**

CHM (NM_000390) Human Tagged ORF Clone

Product data:

Product Type:	Expression Plasmids
Product Name:	CHM (NM_000390) Human Tagged ORF Clone
Tag:	TurboGFP
Symbol:	CHM
Synonyms:	DXS540; GGTA; HSD-32; REP-1; TCD
Mammalian Cell Selection:	Neomycin
Vector:	pCMV6-AC-GFP (PS100010)
E. coli Selection:	Ampicillin (100 ug/mL)



[View online »](#)

ORF Nucleotide Sequence:

>RG213610 representing NM_000390
 Red=Cloning site Blue=ORF Green=Tags(s)

TTTTGTAATACGACTCACTATAGGGCGGCCGGAATTCGTCGACTGGATCCGGTACCGAGGAGATCTGCC
 GCC**CGCATCGCC**

ATGGCGGATACTCTCCCTTCGGAGTTTGTATGTGATCGTAATAGGGACGGTTTGCCTGAATCCATCATTG
 CAGCTGCATGTTCAAGAAGTGGCCGAGAGTCTGCATGTTGATTCAGAAGCTACTATGGAGGAACTG
 GGCCAGTTTTAGCTTTTCAGGACTATTGCTGCTAAAGGAATACCAGGAAAACAGTGACATTGTAAGT
 GACAGTCCAGTGTGGCAAGACCAGATCCTGAAAATGAAGAAGCCATTGCTCTTAGCAGGAAGGACAAAA
 CTATTCACATGTGGAAGTATTTTGTATGCCAGTCAGGATTTGCATGAAGATGTCGAAGAAGCTGGTGC
 ACTGCAGAAAAATCATGCTCTTGTGACATCTGCAAACTCCACAGAAGCTGCAGATTCTGCCTTCTGCCT
 ACGGAGGATGAGTCATTAAGCACTATGAGCTGTGAAATGCTCACAGAACAACTCCAAGCAGCGATCCAG
 AGAATGCGCTAGAAGTAAATGGTGTGAAGTGACAGGGGAAAAAGAAAACCATTGTGATGATAAACTTG
 TGTGCCATCAACTTCAGCAGAAGACATGAGTGAATGTGCTATAGCAGAAGATACCACAGAGCAACCA
 AAGAAAAACAGAATTACTTACTCACAATTAATAAAGAAGGCAGGAGATTAATATTGATTTAGTATCAA
 AGCTGCTGATTCTCGAGGATTACTAATTGATCTTCTAATCAAATCTAATGTTAGTCGATATGCAGAGTT
 TAAAAATATTACCAGGATTTTGCATTTTCGAGAAGGACGAGTGGAAACAGGTTCCGTGTTCCAGAGCAGAT
 GTCTTTAATAGCAACAACCTTACTATGGTAGAAAAGCGAATGCTAATGAAATTTCTTACATTTTGTATGG
 AATATGAGAAATATCCTGATGAATATAAAGGATATGAAGAGATCACATTTTATGAATATTTAAAGACTCA
 AAAATTAACCCCAACCTCCAATATATTGTCATGCATTCATTCGAATGACATCAGAGACAGCCAGCAGC
 ACCATAGATGGTCTCAAAGCTACCAAAAACCTTCTTCACTGTCTTGGGCGGTATGGCAACACTCCATTTT
 TGTTTCTTTATATGGCCAAGGAGAACCTCCCGAGTGTTCCTGCAGGATGTGTGCTGTGTTTGGTGGAA
 TTATTGCTTCGCCATTCAGTACAGTGCCTGTAGTGGACAAAGAATCCAGAAAATGTAAGCAATTATA
 GATCAGTTTGGTCAGAGAATAATCTCTGAGCATTCTCCTGCGGAGGACAGTTACTTTCCTGAGAATGT
 GCTCACGTGTGCAATACAGGCAGATCTCCAGGGCAGTGTGATTACAGATAGATCTGCTCTAAAAACAGA
 TTCAGATCAACAGATTTCCATTTTACAGTGCAGCAGAGGAACCCAGGAACCTTTTCTGTTCCGGTCA
 GAGTTATGTTCTTCAACGATGACATGCATGAAAGGCACCTATTTGGTTCATTTGACTTGCACATCTTCTA
 AAACAGCAAGAGAAGATTTAGAATCAGTTGTGCAGAAATGTTTGTCCATATACTGAAATGGAGATAGA
 AAATGAACAAGTAGAAAAGCCAAGAATTCTGTGGGCTCTTACTTCAATATGAGAGATTCGTGAGACATC
 AGCAGGAGCTGTTATAATGATTTACCATCAACGTTTATGTCTGCTCTGCCCCAGATTGTGTTTAGGAA
 ATGATAATGCAGTCAAACAGGCTGAAACACTTTTCCAGGAAATCTGCCCAATGAAGATTTCTGTCCCC
 TCCACCAATCCTGAAGACATTATCCTTGATGGAGACAGTTTACAGCCAGAGGCTTCAGAATCCAGTGCC
 ATACCAGAGGCTAACTCGGAGACTTTCAAGGAAAGCACAAACCTTGAAACCTAGAGGAGTCTCTGAA

ACGCGTACGCGGCCGCTCGAG – GFP Tag – GTTTAA

Protein Sequence:

>RG213610 representing NM_000390
 Red=Cloning site Green=Tags(s)

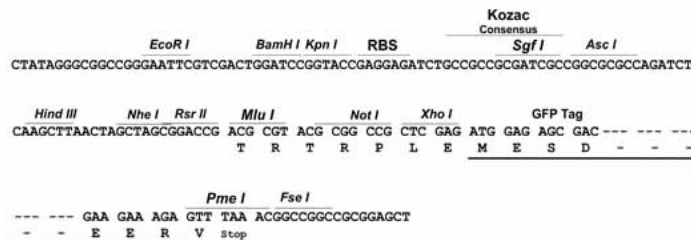
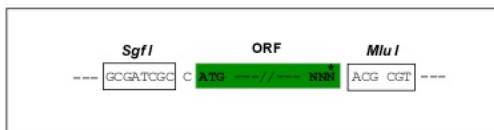
MADTLPEFDDVIVIGTGLPESIIAAACSRSGRRVLHVDSRSYYGGNWSFSSGLLSWLKEYQENSIVS
 DSPVWQDQILENEEIALSRKDKTIQHVEVFCYASQDLHEDVEEAGALQKNHALVTSANSTEADSAFLP
 TEDESLSMTSCEMLTEQTPSSDPENALEVNGAEVTGEKENHCDDKTCVPSTSAEDMSENVPIAEDTTEQP
 KKNRITYSQIIEGRRFNIDLVSKLLYSRLLIDLLIKSNVSRYAEFKNITRILAFREGRVEQVPCSRAD
 VFNSKQLTMVEKRMLMKFLTFCMEYEKYPDEYKGYEEITFYEYKTKQKLPNLQYIVMHSIAMTSETASS
 TIDGLKATKNFLHCLGRYGNTPFLLPLYGQELPQCFCRMCVAVFGIYCLRHSVQCLVVDKESRKCKAII
 DQFGQRIISEHFLVEDSYFENMCSRVRQYRQISRAVLITDRSVLKTDSQQISILVTPAEEPPTFAVRVI
 ELCSSTMTCKMGTYLVHLTCTSSKTAREDESVMVQKLFVPTYEMEIEENEQVEKPRILWALYFNMRDSSDI
 SRSCYNDLPSNVYVCSGPDGGLGNDNAVKAETLFEICPNEDFCPPPPNPEDIILDGDSLQPEASESSA
 IPEANSETFKESTNLGNLEESSE

TRTRPLE – GFP Tag – V

Restriction Sites: SgfI-MluI

Cloning Scheme:

Cloning sites used for ORF Shutting:



ACCN: NM_000390

ORF Size: 1959 bp

OTI Disclaimer: The molecular sequence of this clone aligns with the gene accession number as a point of reference only. However, individual transcript sequences of the same gene can differ through naturally occurring variations (e.g. polymorphisms), each with its own valid existence. This clone is substantially in agreement with the reference, but a complete review of all prevailing variants is recommended prior to use. [More info](#)

OTI Annotation: This clone was engineered to express the complete ORF with an expression tag. Expression varies depending on the nature of the gene.

Components: The ORF clone is ion-exchange column purified and shipped in a 2D barcoded Matrix tube containing 10ug of transfection-ready, dried plasmid DNA (reconstitute with 100 ul of water).

Reconstitution Method:

1. Centrifuge at 5,000xg for 5min.
2. Carefully open the tube and add 100ul of sterile water to dissolve the DNA.
3. Close the tube and incubate for 10 minutes at room temperature.
4. Briefly vortex the tube and then do a quick spin (less than 5000xg) to concentrate the liquid at the bottom.
5. Store the suspended plasmid at -20°C. The DNA is stable for at least one year from date of shipping when stored at -20°C.

RefSeq: [NM_000390.4](#)

RefSeq Size: 5442 bp

RefSeq ORF: 1962 bp

Locus ID: 1121

UniProt ID: [P24386](#)

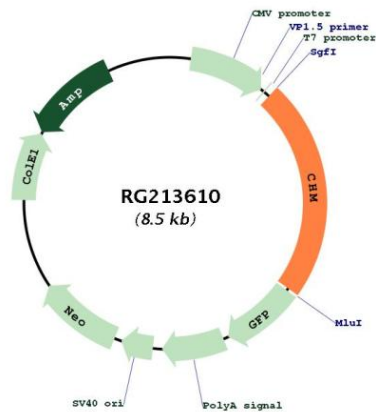
Cytogenetics: Xq21.2

Domains: GDI

Protein Families: Druggable Genome

Gene Summary: This gene encodes component A of the RAB geranylgeranyl transferase holoenzyme. In the dimeric holoenzyme, this subunit binds unprenylated Rab GTPases and then presents them to the catalytic Rab GGTase subunit for the geranylgeranyl transfer reaction. Rab GTPases need to be geranylgeranylated on either one or two cysteine residues in their C-terminus to localize to the correct intracellular membrane. Mutations in this gene are a cause of choroideremia; also known as tapetochoroidal dystrophy (TCD). This X-linked disease is characterized by progressive dystrophy of the choroid, retinal pigment epithelium and retina. Alternatively spliced transcript variants have been found for this gene. [provided by RefSeq, Mar 2016]

Product images:



Circular map for RG213610