

Product datasheet for **RG213609**

CILK1 (NM_014920) Human Tagged ORF Clone

Product data:

Product Type:	Expression Plasmids
Product Name:	CILK1 (NM_014920) Human Tagged ORF Clone
Tag:	TurboGFP
Symbol:	CILK1
Synonyms:	ECO; EJM10; hICK; ICK; LCK2; MRK
Mammalian Cell Selection:	Neomycin
Vector:	pCMV6-AC-GFP (PS100010)
E. coli Selection:	Ampicillin (100 ug/mL)



[View online »](#)

ORF Nucleotide Sequence:

>RG213609 representing NM_014920
 Red=Cloning site Blue=ORF Green=Tags(s)

TTTTGTAATACGACTCACTATAGGGCGGCCGGAATTCGTCGACTGGATCCGGTACCGAGGAGATCTGCC
 GCC**CGCATCGCC**

ATGAATAGATACACAACAATCAGGCAGCTCGGGATGGAACCTACGGTCCGTCCTGCTGGGAAGAAGCA
 TTGAGTCTGGGGAGCTGATCGCTATTAATAAAGAAAATTTTATTCTGGGAGGAATGCATGAA
 CCTTCGGGAGGTTAAGTCTTTAAAGAAGCTCAACCATGCCAATGTAGTCAAATTAAGAAGTTATCAGG
 GAAATGATCATCTTTATTTTATCTTCGAGTACATGAAGGAAAATCTTTACCAGCTCATTAAAGAGAGAA
 ATAAGTTGTTTCTGAGTCTGCTATAAGGAATATCATGTATCAGATATTACAAGGACTCGCATTTATTCA
 CAAACACGGCTTCTTTCATCGAGACTTAAAGCCTGAGAACCTCCTCTGCATGGGACCAGAAGTTGTGAAA
 ATTGCAGACTTTGGTTTGGCCCGAGAAAATACGATCAAACCTCCATATACAGATTATGTATCTACCAGAT
 GGTACAGGGCTCCAGAAGTACTCCTGAGGTCTACCAACTACAGCTCCCCATTGACGTCTGGGCGGTGGG
 CTGCATCATGGCAGAAGTTTACACCCTCAGGCCACTCTTCCCTGGAGCCAGTGAAATTGACACAATATTC
 AAAATTTGCCAAGTGCTGGGGACACAAAAAAGACTGACTGGCCTGAAGGCTATCAACTTCAAGTGCAA
 TGAATTCCTGGCCACAGTGTGTACCAATAACTTAAAGACCTTGATTCCCAATGCTAGCAGTGAAGC
 AGTCCAGCTCCTGAGAGACATGCTTCAGTGGGATCCCAAGAAACGACCAACAGCTAGTCAGGCACCTCGA
 TATCCTTACTTCCAAGTTGGACACCCACTAGGCAGCACCAACAAAACCTCAGGATTCAGAAAAACCA
 AGAAAGGCATCCTGAAAAGGCAGGCCACCTCCTTATATTAAGCCAGTCCCACCTGCCAGCCACCAGC
 CAAGCCACACACGAATTTCTTACGACAGCATCAAGCCAGCCAGCCCCCTCTGCATCTCACGTACCCC
 TACAAAGCAGAGGTCTCCAGGACAGATCACCAAGCCATCTCCAGGAGGACAAGCCAAGCCCGTTGCTTT
 TCCCATCCCTCCACAACAAGCATCCACAGTCGAAAATCACAGCTGGCCTGGAGCACAAAAATGGTGAGAT
 AAAGCCAAAGAGTAGGAGAAGGTGGGTCTTATTTCCAGGTCAACAAAGGATTGAGATGTTGGGCTGAC
 TTGGATGACTTGGATTTAGTCCATCCCTCAGCAGGATTGACCTGAAAAACAAGAAAAGACAGAGTGATG
 ACACTCTCTGCAGGTTTGGAGTGTGGACCTGAAGCCCTCTGAGCCTGTGGGCACAGGAAACAGTGC
 CCCCACCAGACGTCATATCAGCGGCGAGACACGCCACCCTGAGATCTGCAGCCAAGCAGCACTATTTG
 AAGCACTCTCGATACTTGCCTGGGATCAGTATAAGAAATGGCATACTCTCGAATCCAGGCAAGGAATTTA
 TTCCACCTAATCCATGGTCTAGTCTGGCTGTCTGGAAAATCTCAGGGACAATGTCAGTAATCAGCAA
 AGTAAATTCAGTTGGTTCCAGCTCTACAAGTTCTAGTGGACTGACTGGAAACTATGTCCCTTCTTTCTG
 AAAAAAGAAATCGTTTCTGCTATGCAGAGGGTACACCTAGCACCTATTCCAGACCCTTCCCCTGGTTATT
 CCTCCCTGAAGGCCATGAGACCTCATCCTGGGCGACCATTCTTCCACACCCAGCCTAGAAGCACTCTGG
 GTTGATACCACGGCTCCAGCCGCCAGCCAGTGCATGGCCGGACAGACTGGGCTTCCAAGTACGCATCT
 CGGCGA

ACGCGTACGCGGCCGCTCGAG – GFP Tag – GTTTAA

Protein Sequence:

>RG213609 representing NM_014920
 Red=Cloning site Green=Tags(s)

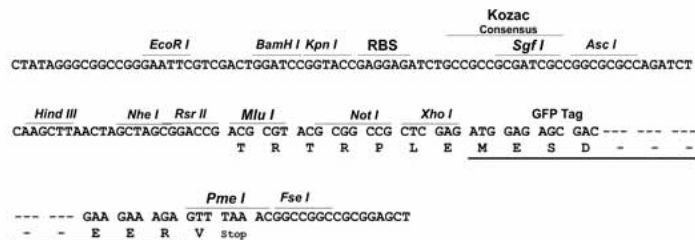
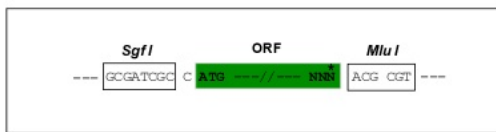
MNRYTTIRQLGDGTYGSVLLGRSIESGELIAIKMKRKFYSWEECMNLREVKSLKLNHANVVKLKEVIR
 ENDHLYFIFEYMKENLYQLIKERNKLPESAIRNIMYQILQGLAFIHKHGFHFDLKPENLLCMGPPELVK
 IADFLGAREIRSKPPYTDYVSTRWYRAPEVLLRSTNYSSPIDVWAVGCIMAEVYTLRPLFPGASEIDTIF
 KICQVLGTPKKTWPEGYQLSSAMNFRWPQCVNPKLTLIPNASSEAVQLLRDMLQWDPKRPRTASQALR
 YPYFQVGHPLGSTTQNLQDSEKPKGILEKAGPPYIKPVPPAQPAPKPHTRISSRQHQASQPPLHLTYP
 YKAEVSRDHPHSLQEDKPSPLLPKSLHNKHPQSKITAGLEHKNGEIKPKSRRRWGLISRSTKDSDDWAD
 LDDLDFSPSLSRIDLKKNKRQSDDTLRFESVLDLKPSEPVGTGNSAPTQTSYQRRDPTLRSAAKQHYL
 KHSRYLPGISIRNGILSNPGEFIPPNPWSSGLSGKSSGTMSVISKVNSVGSSTSSSGLTGNVYPSFL
 KKEIGSAMQRVHLAIPDPSPGYSSLKAMRPHGRPFHTQPRSTPGLIPRPPAAQPVHGRDWDASKYAS
 RR

TRTRPLE – GFP Tag – V

Restriction Sites: SgfI-MluI

Cloning Scheme:

Cloning sites used for ORF Shutting:



ACCN: NM_014920

ORF Size: 1896 bp

OTI Disclaimer: The molecular sequence of this clone aligns with the gene accession number as a point of reference only. However, individual transcript sequences of the same gene can differ through naturally occurring variations (e.g. polymorphisms), each with its own valid existence. This clone is substantially in agreement with the reference, but a complete review of all prevailing variants is recommended prior to use. [More info](#)

OTI Annotation: This clone was engineered to express the complete ORF with an expression tag. Expression varies depending on the nature of the gene.

Components: The ORF clone is ion-exchange column purified and shipped in a 2D barcoded Matrix tube containing 10ug of transfection-ready, dried plasmid DNA (reconstitute with 100 ul of water).

Reconstitution Method:

1. Centrifuge at 5,000xg for 5min.
2. Carefully open the tube and add 100ul of sterile water to dissolve the DNA.
3. Close the tube and incubate for 10 minutes at room temperature.
4. Briefly vortex the tube and then do a quick spin (less than 5000xg) to concentrate the liquid at the bottom.
5. Store the suspended plasmid at -20°C. The DNA is stable for at least one year from date of shipping when stored at -20°C.

RefSeq: [NM_014920.5](#)

RefSeq Size: 6095 bp

RefSeq ORF: 1899 bp

Locus ID: 22858

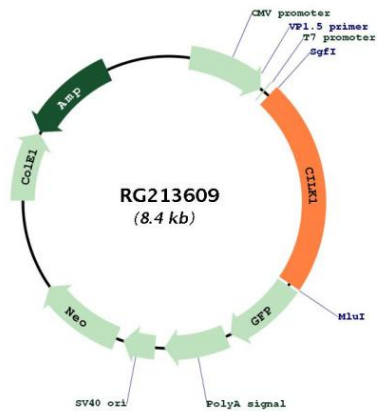
UniProt ID: [Q9UPZ9](#)

Cytogenetics: 6p12.1

Protein Families: Druggable Genome, Protein Kinase

Gene Summary: Eukaryotic protein kinases are enzymes that belong to a very extensive family of proteins which share a conserved catalytic core common with both serine/threonine and tyrosine protein kinases. This gene encodes an intestinal serine/threonine kinase harboring a dual phosphorylation site found in mitogen-activating protein (MAP) kinases. The protein localizes to the intestinal crypt region and is thought to be important in intestinal epithelial cell proliferation and differentiation. Alternative splicing has been observed at this locus and two variants, encoding the same isoform, have been identified. [provided by RefSeq, Jul 2008]

Product images:



Circular map for RG213609