

Product datasheet for **RG213601**

SBF2 (NM_030962) Human Tagged ORF Clone

Product data:

Product Type:	Expression Plasmids
Product Name:	SBF2 (NM_030962) Human Tagged ORF Clone
Tag:	TurboGFP
Symbol:	SBF2
Synonyms:	CMT4B2; DENND7B; MTMR13
Mammalian Cell Selection:	Neomycin
Vector:	pCMV6-AC-GFP (PS100010)
E. coli Selection:	Ampicillin (100 ug/mL)
ORF Nucleotide Sequence:	>RG213601 representing NM_030962 Red=Cloning site Blue=ORF Green=Tags(s)

TTTTGTAATACGACTCACTATAGGGCGGCCGGAATTCGTCGACTGGATCCGGTACCGAGGAGATCTGCC
GCC**CGATCGCC**

ATGGCCCCGTGGCTGACTACTTCATCGTGGTAGGCTATGACCACGAGAAGCCAGGATCAGGAGAAGGTC
TGGGGAAAATAATCCAGAGATTTCCACAGAAGGACTGGGATGATACACCTTTCCACAGGGAATTGAGTT
GTTTTGTCAGCCTGGCGGGTGGCAGCTGTCCAGAGAGAGGAAGCAGCCAACGTTCTTTGTGGTTGCCTG
ACAGACATTGACTCAGATCGACATTACTGCTCATGCCTAACCTTCTATGAGGCAGAGATCAATCTTCAGG
GAACAAAAGAAGGAAGAGATTGAAGGTGAAGCAAAAGTGTCTGGTTAATTCAGCCTGCAGAAGTGTTCG
TCCAAAAGCCTGGTGTGGTATCCAGATTATATTATCCAGAAATTTTTAGGGCTTGCCTGGGTTTGATC
TATACCGTGTATGTGGACAGCCTGAATGTCTCCTTGAAAAGTCTAATTGCAAACCTTTGTGCCTGCCTTG
TCCCAGCGGTGGAGGCTCAGAAAGCTTTTTCTTTGGGTGCAGGAGATAGACAGTTGATCCAGACTCC
TTTACATGATAGTCTTCTATCACGGGCACTAGTGTGGCTCTCCTGTTCCAGCAATTGGGAATTCAAAAT
GTCCTCAGCCTCTTTGTGCAGTCTCACAGAAAATAAGGTTCTCTTCCATTCTGCAAGTTTCCAGAGAC
TTAGTGATGCTTGTAGAGCCCTGGAATCTTTAATGTTTCTCTTAAATATAGTTATCCTTATATCCCTAT
TCTCCCGCTCAGCTACTGGAAGTCTAAGTTCACCAACGCTTTCATTATTGGAGTACATTCTGTCTTT
AAAAGTATGCCATGAACCTTTAGATGTAATCATAGCAGATTTGGATGGAGGCACTATTTAAAATCCCCG
AATGTATTCACCTCTTCCCTCCAGAACCACTTCTACATCAGACTCAATCAGCTCTTTCTTTGATTTT
ACACCCAGATTTGGAAGTAGCAGATCATGCTTTTCTCCTCCACGAACAGCTTTATCCCACTCAAAAATG
CTGGATAAAGAGGTGCGAGCCGTTTTCTTAGATTATTTGCACAACCTTCCAAGGATATAGATCCTGCC
TGCAACTTATAAGAATTCATGCAGAGCCAGTAATACATTTCCACAAGACAGCATTCTTGGGGCAGCGTGG
TTTGGTCGAGAATGATTTCTCACTAAAGTACTCAGTGAATGGCATTTCAGGTTTTGTTTCAGAAAGA
GGTCTCCTTATAGATCTTGTGATCTTTGATGAGTTGGTAGCCTTTGAAGTAGAGAGAATTAAGTTG
AAGAAAATAACCCAGTGAAGATGATAAAGCATGTCAGGGAACCTGCTGAGCAACTATTCAAAAATGAGAA
TCCAAATCCTCATATGGCATTCCAGAAAGTTCACGGCCAACAGAAGGATCCCATTTCGAGTTCATATT



[View online »](#)

CTTCCTTTCCAGAGATTAATGAAGCCCGGTTTCAGGAATTAATACAGGAAAATGTTGCTAAGAACCAGA
 ATGCACCTCCTGCCACACGAATAGAAAAGAAATGTGTTGTGCCAGCAGGTCCACCTGTTGTTTCGATAAT
 GGACAAGTGACGACAGTTTTCAACAGTGCACAAAGACTAGAAGTTGTCAGAACTGTATCTCATTGATA
 TTTGAAAATAAAATTTTGAAACTGAAAAGACCCTTCTGCTGCACTCAGAGCCCTTAAAGGAAAGGCAG
 CAAGACAGTGTCTCACTGATGAATTGGGTTTGCATGTCCAGCAAAACCGGCAATATTAGACCATCAACA
 GTTTGACTACATAATAAGGATGATGAATTGTACTCTACAGGATTGTTCAAGTTTAGAAGAATAACAACATT
 GCCGCAGCATTACTCCCTTTGACCAGTGGCTTTCTATAGGAACTTGCCCTGGAGTCAGCAAGTTGCTT
 ACACGTGTGTACAAGACCACCCATTTGGACAAAATCAGCAATTTTGGGAGACAACCTTTTACAATGCAGT
 GCAGGAACAGGTTTCGCTCCCTTTATCTCTCAGCCAAGGAAGACAATCATGCCCCGCATCTGAAGCAAAAG
 GATAAGCTTCTGATGACCATTATCAGGAGAAGACAGCAATGGACCTGGCAGCTGAGCAACTACGCCTTT
 GGCCTACCCTGAGCAAGTCAACTCAGCAAGAGCTAGTGAACATGAGGAAAGCACTGTCTTTAGTCAGGC
 CATTCACTTTGCAAACTCATGGTGAACCTGCTAGTTCCTCGACACAAGTAAAAACAAGCTCCTAAGA
 ACATCAGCGCCAGGTGACTGGGAGAGCGGAAGCAACAGCATTGTCACAAACAGTATTGCAGGAAGTGTAG
 CTGAGAGCTATGATACAGAGAGTGGGTTTGAAGATTGAGAGAATACTGACATTGCCAATTCTGTTGTGCG
 GTTCATTACCCGATTTATTGACAAAGTTTGTACAGAGAGTGGAGTTACTCAGGATCACATCAAGAGCCTT
 CATTGCATGATACCAGGAATTGTAGCTATGCACATTGAGACCCTAGAAGCAGTACATCGAGAAAGCAGAA
 GACTTCCGCCTATTGAGAAGCCCAAGATTCTTAGACCTGCTCTGCTGCCAGGAGAAGAAATGTCTGTGA
 GGGTCTTCGAGTCTGCTGGATCCTGATGGAAGAGAAGAAGCTACTGGAGGTCTTCTTGGAGGCCCTCAG
 CTCCTGCCAGCAGAAGGAGCCTTGTTCCTACCACATACAGAAATCTCTTTCAGAGGAACACCCCATGATC
 AGTTAGTGGGTGAGCAGACAGTTGTGCGGAGCTTTCCATTGCCTCCATCACAAGGAGAAGAAGATTAC
 AATGCAGAACCAGCTACAGCAGAATGCAAGAAGGACTGCAGATCACATCAGCATCTTTTCAGTTGATT
 AAGGTAGCATTGATGAAGAAGTCAAGTCCAGAAGTGTAGAGATCTTTAAGAAACAGCTGATGAAGTTCC
 GTTATCCTCAGTCCATTTTCAGTACCTTTGCTTTTGTCTGGACAACTACCCCAAAATAAATTTACC
 AAAACAGAAGGAAAAGAACAACCTTCTTTTGTACCTTCTCAAAAACAATTGTGAAAGGTGCCAAAAGGGCA
 GGGAAAATGACAATTGGGCGCAATATTTACTGAAGAAGAAGACAGGGACAATTGTGGAAGAAAGAGTAA
 ATCGTCTGGATGGAATGAAGATGATGATGATCTGTTTCAGATGAGAGTGGCTCCCAACAGTACCAC
 CCTGAAGGCCCTCCGAGAAGTCTACAATGGAACAGTTGGTGGAAAAGCTTGTTCAGAGACTATCAGCGT
 TTAGGTTTAGGAACCATAAAGTGGCAGCTTCCCGTTCAAGACCCGAGTATTTTAGAATTACTGCCTCCA
 ACAGGATGATTTCACTCTGCCGAGCTATCCTGGCCTTTTAGTCGTACCTCAAGCTGTACAGGACAGTAG
 TTTACCAAGAGTAGCTCGCTGCTATCGACACAATCGCCTGCCTGTTGTATGTTGGAAGAACTCAAGAAGT
 GGTACTCTGCTCCTCGATCTGGAGGATCCATGGGAAGGGAGTGGTGGTCTTTCAAATCTCAGAACT
 CCCTCAGGCCGCTCCTACCTCCTTTTAGAATCTTCCAGTAGCATAGAACAAGGAAATACTTGCAGGC
 CTTACTGAATGCTGTTTCTGTCCATCAGAACTCAGAGGCAACAGCACTTACTGTGAGCCAGCCTTT
 GCTCTATCTCCAGGTGTGTGGGCAAGTCTTCGCTCTAGCACTCGCTTGTATCAGCTCTCCAACATCCTTCA
 TTGATGTTGGCGCCCGCTGGCAGGCAAGGATCACTCGGCCTCCTCAGTAAACAGCAGCTACCTACAAAA
 CCAGCTCTTGAACCGCAAGCAGCCCTTACATATTTGGTGAAGAAGTCCGCAACTAAGGAACCTCAAGGTA
 GAATTTGCTTTAAATTTGTGAGTTTGTTCCTGTTGAATTTTCAATGAAATCCGGCAAGTGAAGCCAGTTTTA
 AGAAGCTGATGAGGGCTGTATCCCAAGCACCATCCCTACTGACTCAGAAGTACCTTCTGAAAGCGCT
 GGGAGATTCTGAGTGGTCCCACAGCTTACAGGATAATGCAGCTGGCTGTGGTTGTATCAGAAGTACTT
 GAGAATGGTTCCAGTTTTGGTCTGTTTGGAGGAAGGCTGGGACATCACTGCACAAGTGACATCCCTGG
 TTCAGTTACTCAGTGATCCCTTTTATAGGACACTTGAAGGCTTCCAGATGTTGGTTGAAAAGAGTGGCT
 CTCTTTTGGTCACAAATTCAGTCAGAGGAGCAGCTTGACCCTCAACTGTGAGGGAGTGGTTTTGCTCCA
 GTCTTCTTACAGTTCTTAGACTGTGTACACCAGGTTTACAACCAGTATCCAAGTGTGTTGAATTCATC
 TCTATTACTTAAAGTTCTTGGCTTTCCACTATGTGTCTAATCGCTTTAAAACATTTCTCCTGGATTGAGA
 CTATGAAAGATTAGAGCACGGAACCTTTATTTGATGATAAAGGAGAAAAGCATGCCAAAAAGGAGTCTGT
 ATTTGGGAATGTATTGACAGAATGCACAAGAGGAGTCCCATTTTCTTAATTTATTTATTCACCATTGG
 AAATAGAGGCTCTAAAGCCCAATGTAACGTCTCTAGCCTCAAGAAGTGGGATTACTACATAGAAGAGAC
 CCTGTCCACAGGCCCTTCTATGACTGGATGATGCTAACCCCAAGCACTTCCCTCCGAAGACTCTGAC
 CTGGCTGGAGAAGCTGGGCCACGGAGCCAGAGGAGAACAGTGTGGCCATGCTATGATGATGTGAGCTGTA
 CTCAGCCTGATGCTCTACCAGCCTTTTTCAGTGAATTTGAAAATTTGGAGCAAAATTTGAACCAAGCCCC
 TGAGAAGTGGCAGCAGCTGTGGGAAAGGTAACCGTGGACCTTAAAGAAGAACCAAGAACAGATCGCTCC
 CAAGACACCTGTGAGATCCCCAGGAATTGTGTCTACCAACCTACCTTCTATCAGAAGAGGTCTCTGC

TACATCTCCCAGACAGCAGCATGGGGGAGGAACAGAATCCAGCATCTCCCCATCCAATGGAGTGGAGCG
 AAGAGCAGCCACGCTCTATAGCCAGTATACATCCAAGAATGATGAAAACAGGTCCTTTGAGGGAACACTT
 TATAAAGAGGGGCTTTGCTGAAAGGTTGGAAGCCCCGTTGGTTTGTGGATGTAACAAAACATCAGC
 TGGCCTACTATGACTCAGGTGAGGACACAAGCTGTAAAGGCCACATTGATCTGGCTGAAGTAGAAATGGT
 CATCCCTGCTGGCCCCAGCATGGGAGCCCCAAAGCACACAAGTGACAAGGCTTTCTTTGATCTCAAGACC
 AGCAAACGTGTATAACTTCTGCGCCCAGGATGGACAGAGTGCCAGCAATGGATGGACAAGATCCAGA
 GTTGTATCTCTGATGCC

ACGCGTACGCGGCCGCTCGAG – GFP Tag – GTTTAA

Protein Sequence:

>RG213601 representing NM_030962
 Red=Cloning site Green=Tags(s)

MARLADYFIVVGYDHEKPGSGEGLGKIIQRFPPQKDWDDTPFPQGIELFCQPGGWQLSRERKQPTFFVVVL
 TDIDSDRHYCSCLTFYEAEINLQGTKKEEIEGEAKVSGLIQPAEVFAPKSLVLSRLLYYPEIFRACLGLI
 YTYVYVDSLNVSLLESLIANLCACLVPAAGGSQKLFSLGAGDRQLIQTPLHDSLPTGTSTVALLFQQLGIQN
 VLSLFCAVLTENKVLVHSAFQRLSDACRALESMLFPLKYSYPYIPILPAQLLELVSSPTPFIIIGVHVSF
 KTDVHELLDVIIADLDGGTIKIPECIHLSSLPEPLLHQTQSALSILHPDLEVADHAFPPRPTALSHSKM
 LDKEVRVAVFLRFAQLFQGYRSLQLIRIHAEPVIHFHKAFLGQRGLVENDFLTKVLSGMAFAGFVSE
 RPPYRSCDLFDELVAFEVERIKVEENPVKMIKHVRELAEQLFKNENPNPHMAFQKVPVPRTEGSHLRVHI
 LPPFEINEARVQELIQENVAKNQNPATRIEKKCVVAGPPVVSIMDKVTVFNSAQRLEVVNRNCSFI
 FENKILETEKTLPAALRALKGKAARQCLDELGLHVQQRNAILDHQQFDYIIRMMNCTLDQCSSLEEYNI
 AAALLPLTSAFYRKLAPGVSQFAYTCVQDHPITWNQQFWETTFYNAVQEQVRSLYLSAKEDNHAPHLKQK
 DKLPDDHYQEKAMDAAEQRLRWPTLSKSTQQLVQHEESTVFSQAIHFANLMVNLVPLDTSKNKLLR
 TSAPGDWESGNSIVTNSIAGSVAESYDTESGFEDSENTDIANSVVRFITRFDKVCETESGVTQDHIKSL
 HCMIPGIVAMHIETLEAVHRESRRLPPIQPKILRPALLPGEIIVCEGLRVLLDPDGREEATGGLLGGPQ
 LPAEGALFLTTYRILFRGTPHDQLVGEQTVVRSFPIASITKEKKITMQNQLQQNMQEGLQITSASFQLI
 KVAFDEEVSPVEVEIFKKQLMKFRYPQSIFSTFAAAGQTPQIILPKQKEKNTSFRTFSKTIKVGAKRA
 GKMTIGRQYLLKKKTGTIVEERNRPGWNEDDDVSVSDESELPSTTLKASEKSTMEQLVEKACFRDYQR
 LGLGTISGSSSRPEYFRITASNRMYSLCRSYPGLLVVPQAVQDSSLPRVARCVRHNRPLPVVCWKNRSR
 GTLLLRSGGFHGKGVVGLFKSQNSPQAAPTSSLESSSIEQEKYLQALLNAVSVHQKLRGNSTLTVRPAF
 ALSPGVWASLRSSTRLISSPSTFIDVGARLAGKDHSASFNSSYLQNLKQAAALYIFGEKSQLRNFKV
 EFALNCEFPVPEFHEIRQVKASFKLMRACIPSTIPTDSEVTFKALGDSEWFPQLHRIMQLAVVVSEVL
 ENGSSVLVCLLEGGWDITAQVTSLVQLLSDPFYRTLEGFQMLVEKEWLSFGHKFSQRSSLTLNCQSGGFAP
 VFLQFLDCVHVHNQYPTFEFNLYYLKFALFYVSNRFKTFLLDSDYERLEHGTLDKGEKHAKKGV
 IWECIDRMHKRSPIFFNLYSPLIEALKPNVNVSSLKWDYIEETLSTGPSYDWMMLTPKHFPSESDS
 LAGEAGPRSQRRTVWPCYDDVSTQPDALTSLFSEIEKLEHKLNAPEKWQQLWERVTVDLKEEPRTDRS
 QRHLRSRPGIVSTNLPSYQKRSLLHLPDSSMGEEQNSSI SPSNGVERRATLYSQYTSKNDENRSFEGTL
 YKRGALLKGWKPWFVLDVTKHQLRYYDSGEDTSCKGHIDLAEVEMVIPAGPSMGAPKHTSDKAFDLKT
 SKRVYNFCAQDGGQSAQQWMDKIQSCISDA

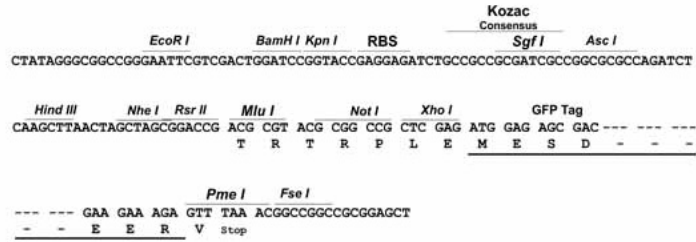
TRTRPLE – GFP Tag – V

Restriction Sites:

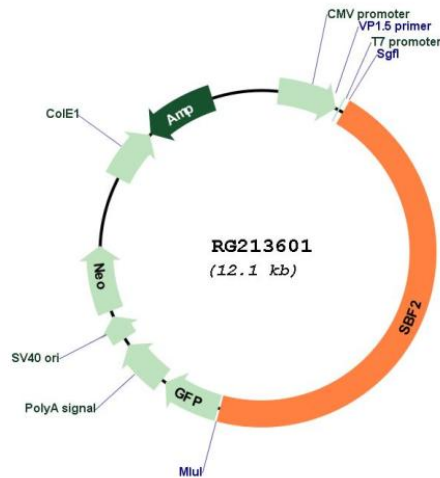
SgfI-MluI

Cloning Scheme:

Cloning sites used for ORF Shutting:



Plasmid Map:



ACCN: NM_030962
 ORF Size: 5547 bp

OTI Disclaimer: Due to the inherent nature of this plasmid, standard methods to replicate additional amounts of DNA in E. coli are highly likely to result in mutations and/or rearrangements. Therefore, OriGene does not guarantee the capability to replicate this plasmid DNA. Additional amounts of DNA can be purchased from OriGene with batch-specific, full-sequence verification at a reduced cost. Please contact our customer care team at custsupport@origene.com or by calling 301.340.3188 option 3 for pricing and delivery.

The molecular sequence of this clone aligns with the gene accession number as a point of reference only. However, individual transcript sequences of the same gene can differ through naturally occurring variations (e.g. polymorphisms), each with its own valid existence. This clone is substantially in agreement with the reference, but a complete review of all prevailing variants is recommended prior to use. [More info](#)

OTI Annotation: This clone was engineered to express the complete ORF with an expression tag. Expression varies depending on the nature of the gene.

Components: The ORF clone is ion-exchange column purified and shipped in a 2D barcoded Matrix tube containing 10ug of transfection-ready, dried plasmid DNA (reconstitute with 100 ul of water).

Reconstitution Method:

1. Centrifuge at 5,000xg for 5min.
2. Carefully open the tube and add 100ul of sterile water to dissolve the DNA.
3. Close the tube and incubate for 10 minutes at room temperature.
4. Briefly vortex the tube and then do a quick spin (less than 5000xg) to concentrate the liquid at the bottom.
5. Store the suspended plasmid at -20°C. The DNA is stable for at least one year from date of shipping when stored at -20°C.

RefSeq: [NM_030962.3](#), [NP_112224.1](#)

RefSeq Size: 7447 bp

RefSeq ORF: 5550 bp

Locus ID: 81846

UniProt ID: [Q86WG5](#)

Cytogenetics: 11p15.4

Gene Summary: This gene encodes a pseudophosphatase and member of the myotubularin-related protein family. This gene maps within the CMT4B2 candidate region of chromosome 11p15 and mutations in this gene have been associated with Charcot-Marie-Tooth Disease, type 4B2. [provided by RefSeq, Jul 2008]