

Product datasheet for **RG213575**

CEACAM20 (NM_001102599) Human Tagged ORF Clone

Product data:

| | |
|---------------------------|--|
| Product Type: | Expression Plasmids |
| Product Name: | CEACAM20 (NM_001102599) Human Tagged ORF Clone |
| Tag: | TurboGFP |
| Symbol: | CEACAM20 |
| Synonyms: | UNQ9366 |
| Mammalian Cell Selection: | Neomycin |
| Vector: | pCMV6-AC-GFP (PS100010) |
| E. coli Selection: | Ampicillin (100 ug/mL) |



[View online »](#)

ORF Nucleotide Sequence:

>RG213575 representing NM_001102599
 Red=Cloning site Blue=ORF Green=Tags(s)

TTTTGTAATACGACTCACTATAGGGCGGCCGGAATTCGTCGACTGGATCCGGTACCGAGGAGATCTGCC
 GCC**CGATCGCC**

ATGGGGCCTGCTGACTCATGGGGACACCACTGGATGGGAATCCTGCTTTACGCTCGCTTTGTACCGTAT
 GGAGTCCCTCCAGCTGCAGCCAGCTCACCTCAATGCCAACCCACTTGATGCCACCCAAAGTGAGGATGT
 TGTTCCTGCTGTGTTTGGGACCCCCAGGACACCCAGATTTCATGGCAGATCCAGAGAGCTGGCCAAACCC
 TCCATTGCAGTCAGCCAGGCACTGCCATAGAGCAGAAGGACATGGTGACCTTCTACTGCACCACTAAGG
 ACGTCAACATTACCATCCACTGGGTTTCCAACAACCTCTCCGTTGTGTTCCATGAGCGCATGCAGCTGTC
 CAAGGATGGCAAGATCCTCACCATTCTCATTGTCCAGCGGGAGGACTCAGGGACTACCAATGTGAAGCT
 CGAGATGCCCTTCTGAGCCAGAGGAGCGACCCCATCTTCTGGATGTGAAGTATGGTCTGATCCTGTTG
 AAATCAAATTGGAGTCTGGTGTGCCAGTGGGGAGGTGGTTGAGGTGATGGAGGGCTCCAGCATGACCTT
 CTTAGCGGAAACAAAGTCTCACCCACCTGTGCCTATACTTGGTTTCTCCTTGACTCCATTCTGTCTCAC
 ACCACGAGAACATTACCATCCATGCTGTGTCCAGAGAACATGAGGGCCTGTACAGGTGCTTGGTGTCCA
 ACAGTGCCACCCACCTGTCCAGCCTGGGTACTCTGAAGGTCCGAGTACTTGAAACACTGACCATGCCTCA
 AGTCGTGCCTTCAAGCCTGAACCTTGTGGAGAATGCTAGGTCTGTGGACCTGACCTGCCAAACCGTCAAT
 CAGAGTGTGAATGTCCAGTGGTTCCTAAGTGGCCAGCCCTCCTGCCAGTGAGCACCTGCAGCTGTGAG
 CTGACAACAGGACCCTAATCATCCATGGCCTCCAGCGGAATGACACGGGGCCCTATGCCTGTGAGGTCTG
 GAACTGGGGCAGCCGGGCGGAGTGAGCCCTTGAAGTCAACTGTCCCAGTCTCCTCCCTG
 TCCTCAGGGGCCATCGTGGTATTGTATCGGGATCCTGGCTGTCATTGCTGTGGCCTCAGAAGTGGCT
 ATTTTCTCATACAGAAATGCCAGACGGCCCTCAAGGAAAACAACAGAGGACCCAGTCATGAGACCTC
 ACAACCCATCCCGAAGGAGGAGCACCCACAGAGCCAGTTCGAAAGCCTGAGTCTGAGTATTGCAAT
 ATATCCAGCTTTCAGGGACGGATCAGAGTGAAGTCAACTGATGCAACCCAGACCTTCCAGAGGAGACCTATG
 AGACGAAGCTGCCTTCAAGCCGTAGAGGCAATTCTTTCAGCCCTGGAAGCCACCACCCAAACCTCT
 GATGCCCCACTCAGATTGGTCTCCACTGTGCCAAAAACATGGAGTCAATCTATGAGGAGCTTGTGAAT
 CCAGAGCCCAACACTTACATCAAATCAACCCCTCCGTC

ACGCGTACGCGGCCGCTCGAG - GFP Tag - GTTTAA

Protein Sequence:

>RG213575 representing NM_001102599
 Red=Cloning site Green=Tags(s)

MGPADSWGHHWMGILLSASLCTVWSPAAAQLTLNANPLDATQSEDEVLPVFGTPTPQIHGRSRELAKE
 SIAVSPGTAIEQKDMVTFYCTTKDVTNIHWSNNLSVVFHERMQLSKDGKILITLIVQREDSGTQCEA
 RDALLSQRSDPIFLDVKYGPDPVEIKLESGVASGEVVEVMEGSSMTFLAETKSHPPCAYTWFLDLSILSH
 TTTRFTIHAVSREHEGLYRCLVNSATHLSSLGLTKVRVLETLTMPQVVPSSLNLVENARSVDLTCQTVN
 QSVNVQWFLSGQPLLPEHLQLSADNRTLIIHGLQRNDTGPYACEVWNWGSRRARSEPLELTINCPQSSSL
 SSGAIGIVIGILAVIAVASELYFLYIRNARRPSRKTEDPSHETSQIPKKEHPTSPSESLSPEYCN
 ISQLQGRIRVELMQPPDLPEETYETKLPSARRGNSFSPWKPPKPLMPPLRLVSTVPKNMESIYEELVN
 PEPNTYIQINPSV

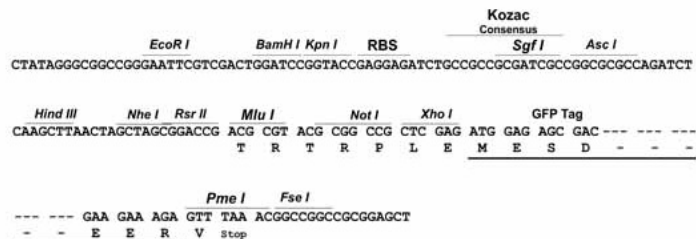
TRTRPLE - GFP Tag - V

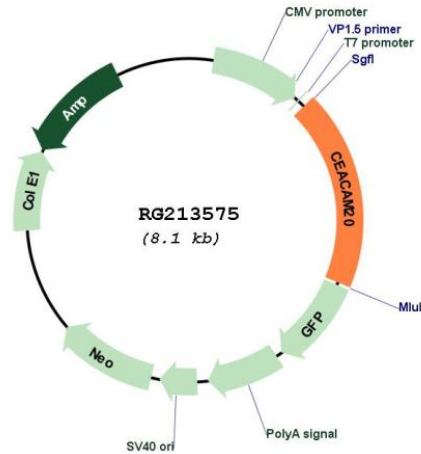
Restriction Sites:

Sgfl-MluI

Cloning Scheme:

Cloning sites used for ORF Shutting:



Plasmid Map:


ACCN: NM_001102599

ORF Size: 1509 bp

OTI Disclaimer: The molecular sequence of this clone aligns with the gene accession number as a point of reference only. However, individual transcript sequences of the same gene can differ through naturally occurring variations (e.g. polymorphisms), each with its own valid existence. This clone is substantially in agreement with the reference, but a complete review of all prevailing variants is recommended prior to use. [More info](#)

OTI Annotation: This clone was engineered to express the complete ORF with an expression tag. Expression varies depending on the nature of the gene.

Components: The ORF clone is ion-exchange column purified and shipped in a 2D barcoded Matrix tube containing 10ug of transfection-ready, dried plasmid DNA (reconstitute with 100 ul of water).

| | |
|-------------------------------|---|
| Reconstitution Method: | <ol style="list-style-type: none">1. Centrifuge at 5,000xg for 5min.2. Carefully open the tube and add 100ul of sterile water to dissolve the DNA.3. Close the tube and incubate for 10 minutes at room temperature.4. Briefly vortex the tube and then do a quick spin (less than 5000xg) to concentrate the liquid at the bottom.5. Store the suspended plasmid at -20°C. The DNA is stable for at least one year from date of shipping when stored at -20°C. |
| RefSeq: | <u>NM_001102599.1</u> , <u>NP_001096069.1</u> |
| RefSeq Size: | 1530 bp |
| RefSeq ORF: | 1512 bp |
| Locus ID: | 125931 |
| UniProt ID: | <u>Q6UY09</u> |
| Cytogenetics: | 19q13.31 |
| Protein Families: | Transmembrane |
| Gene Summary: | Together with the tyrosine-protein kinase SYK, enhances production of the cytokine CXCL8/IL-8 via the NFkB pathway and may thus have a role in the intestinal immune response. [UniProtKB/Swiss-Prot Function] |