

Product datasheet for **RG213574**

OXA1L (NM_005015) Human Tagged ORF Clone

Product data:

Product Type:	Expression Plasmids
Product Name:	OXA1L (NM_005015) Human Tagged ORF Clone
Tag:	TurboGFP
Symbol:	OXA1L
Synonyms:	OXA1
Mammalian Cell Selection:	Neomycin
Vector:	pCMV6-AC-GFP (PS100010)
E. coli Selection:	Ampicillin (100 ug/mL)
ORF Nucleotide Sequence:	>RG213574 representing NM_005015 Red=Cloning site Blue=ORF Green=Tags(s)

TTTTGTAATACGACTCACTATAGGGCGGCCGGAATTCGTCGACTGGATCCGGTACCGAGGAGATCTGCC
GCC**CGATCGCC**

ATGGCGATGGGACTAATGTGCGGACGCCGGGAGCTTCTGCGCTTGTACAGTCCGGGCGTCGGTCCACA
GCGTCGCAGGGCCCTCGCAATGGCTTGGGAAACCGCTGACCACACGGCTCCTATCCCAGTAGCCCCGTG
CTGCTGTCGCCCACACTACCTCTCCTTGGCGCTTCCGGCCCCGAGCCTCAGTACCTCTGCTATCTCT
TTTGCAGAAGTCCAGGTTCCAGGCCCTCCTGTTGTTGCTGCAACTCCCTACCCACAGCAGTACCTGAGG
TGGCTTCTGGAGAGACTGCAGATGTAGTCCAACTGCTGCAGAGCAGAGCTTCGCTGAAGTGGGGCTGGG
GTCATACACCCCAGTGGGACTGATCCAGAATTTACTGGAATTTATGCATGTTGATCTGGGCTACCTTGG
TGGGGGGCCATTGCTGCATGTACAGTCTTTGCCCGCTGCCTGATTTTTCTCTCATCGTGACGGGCCAGC
GAGAGGACGCCAGGATCCACAATCACTTGCCAGAGATCCAGAAGTTTTCCAGTCGAATCAGAGAGGCCAA
GTTAGCAGGAGACCATATTGAGTATTACAAGGCTTCTCGGAGATGGCACTTTACCAGAAAAACATGGT
ATTAACCTCTATAAACCTCTCATTCTCCCTGTGACTCAGGCCCAATCTTCATCTCCTTCTTATTGCTT
TGAGAGAGATGGCCAACCTTCTGTGCCAGCCTGCAGACAGGTGGCCTCTGGTGGTTCCAGGATCTCAC
GGTATCCGATCCCATCTACATATTACACTGGCAGTCACTGCTACAATGTGGGCTGTTCTTGAGCTAGTT
GCTGAGACAGGTGTCAAAGTTCTGACCTTCAGTGGATGAGAAATGTCATCAGAATGATGCCCTGATAA
CCTTGCCATAAACCATGCATTTCCCCACGGCAGTGTTTATGTACTGGCTCTCCTCCAATTTGTTTTCCCT
GGTCCAAGTATCCTGTCTCCGGATTCCAGCAGTACGCACTGTACTTAAAAATCCCCACGCTGTTGTACAT
GACCTGGACAAATTACCTCCACGGGAAGGCTTCTAGAGAGCTTCAAAAAAGGCTGGAAAAATGCTGAAA
TGACGCGTCAGCTGCGAGAGCGTGAACAACGCATGCGGAATCAGTTGGAGCTAGCAGCCAGGGGTCTTT
ACGACAGACCTTTACCCACAACCCTCTCTACAACCTGGAAGGATAACCCTCCAATATCCCTAGCAGC
AGCAGCAAACCAAGTCAAAGTATCCCTGGCAGCAGACACTTGGC

AGCGGACCGACGCGTACGCGGCCGCTCGAG - GFP Tag - GTTTAA



[View online »](#)

Protein Sequence: >RG213574 representing NM_005015
 Red=Cloning site Green=Tags(s)

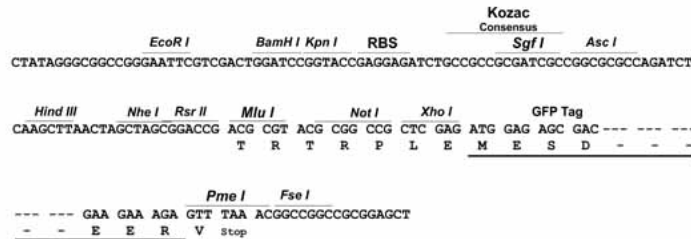
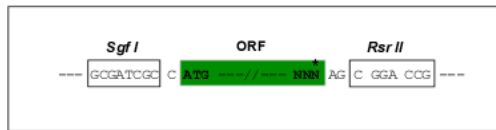
MAMGLMCGRRELLRLLQSGRRVHSVAGPSQWLKPLTTRLLFPVAPCCCRPHYLFLAASGPRSLSTS AIS
 FAEVQVQAPPVVAATPSPTAVPEVASGETADVVTAAEQSFAELGLGSYTPVGLIQNLLEFMHVDLGLPW
 WGAIAACTVFARCLIFPLIVTGQREAAARIHNHLPEIQKFSRRIREAKLAGDHIEYKASSEMALYQKKHG
 IKLYKPLILPVTQAPIFISFFIALREMANLPVPSLQTGGLWWFQDLTVSDPIYIILPLAVTATMWAVLELG
 AETGVQSSDLQWMRNVIRMMPLITLPITMHFPTAVFMYWLNSSNLFSLVQVSLRIPAVRTVLKIPQRVH
 DLDKLPPEGFLESFKKGWKNAMETRQLREREQMRNQLELAARGPLRQTFTHNPLLQPGKDNPPNIPSS
 SSKPKSKYPWHDTLG

SGPTRRRLE - GFP Tag - V

Restriction Sites: SgfI-RsrII

Cloning Scheme:

Cloning sites used for ORF Shuttling:



ACCN: NM_005015

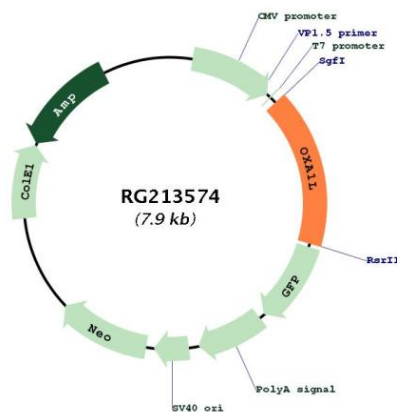
ORF Size: 1485 bp

OTI Disclaimer: Due to the inherent nature of this plasmid, standard methods to replicate additional amounts of DNA in E. coli are highly likely to result in mutations and/or rearrangements. Therefore, OriGene does not guarantee the capability to replicate this plasmid DNA. Additional amounts of DNA can be purchased from OriGene with batch-specific, full-sequence verification at a reduced cost. Please contact our customer care team at custsupport@origene.com or by calling 301.340.3188 option 3 for pricing and delivery.

The molecular sequence of this clone aligns with the gene accession number as a point of reference only. However, individual transcript sequences of the same gene can differ through naturally occurring variations (e.g. polymorphisms), each with its own valid existence. This clone is substantially in agreement with the reference, but a complete review of all prevailing variants is recommended prior to use. [More info](#)

OTI Annotation:	This clone was engineered to express the complete ORF with an expression tag. Expression varies depending on the nature of the gene.
Components:	The ORF clone is ion-exchange column purified and shipped in a 2D barcoded Matrix tube containing 10ug of transfection-ready, dried plasmid DNA (reconstitute with 100 ul of water).
Reconstitution Method:	<ol style="list-style-type: none"> 1. Centrifuge at 5,000xg for 5min. 2. Carefully open the tube and add 100ul of sterile water to dissolve the DNA. 3. Close the tube and incubate for 10 minutes at room temperature. 4. Briefly vortex the tube and then do a quick spin (less than 5000xg) to concentrate the liquid at the bottom. 5. Store the suspended plasmid at -20°C. The DNA is stable for at least one year from date of shipping when stored at -20°C.
RefSeq:	<u>NM_005015.5</u>
RefSeq Size:	1737 bp
RefSeq ORF:	1308 bp
Locus ID:	5018
UniProt ID:	<u>Q15070</u>
Cytogenetics:	14q11.2
Protein Families:	Transmembrane
Protein Pathways:	Protein export
Gene Summary:	This gene encodes an evolutionarily conserved protein that is localized to the inner mitochondrial membrane. The encoded protein is essential for the translocation of the N-terminal tail of subunit 2 of cytochrome c oxidase, and is involved in the assembly of the cytochrome c oxidase and ATPase complexes of the mitochondrial respiratory chain. [provided by RefSeq, Jul 2016]

Product images:



Circular map for RG213574