

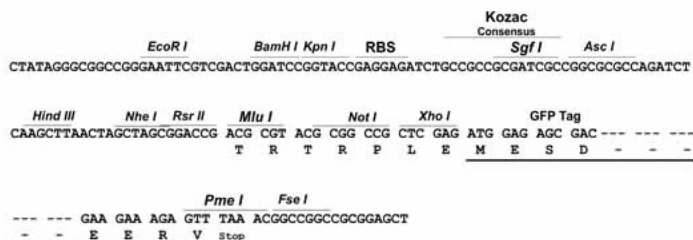
Product datasheet for RG213567

SLC14A2 (NM_007163) Human Tagged ORF Clone

Product data:

Product Type:	Expression Plasmids
Product Name:	SLC14A2 (NM_007163) Human Tagged ORF Clone
Tag:	TurboGFP
Symbol:	SLC14A2
Synonyms:	hUT-A6; HUT2; UT-A2; UT2; UTA; UTR
Mammalian Cell Selection:	Neomycin
Vector:	pCMV6-AC-GFP (PS100010)
E. coli Selection:	Ampicillin (100 ug/mL)
Restriction Sites:	SgfI-MluI
Cloning Scheme:	

Cloning sites used for ORF Shuttling:



ACCN: NM_007163

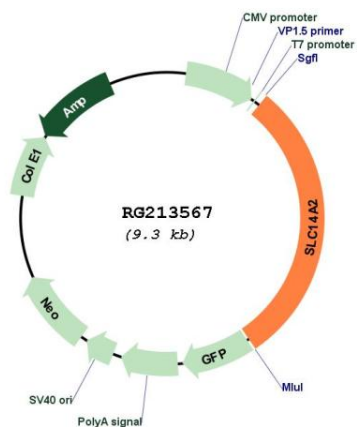
ORF Size: 2760 bp



[View online »](#)

OTI Disclaimer:	The molecular sequence of this clone aligns with the gene accession number as a point of reference only. However, individual transcript sequences of the same gene can differ through naturally occurring variations (e.g. polymorphisms), each with its own valid existence. This clone is substantially in agreement with the reference, but a complete review of all prevailing variants is recommended prior to use. More info
OTI Annotation:	This clone was engineered to express the complete ORF with an expression tag. Expression varies depending on the nature of the gene.
Components:	The ORF clone is ion-exchange column purified and shipped in a 2D barcoded Matrix tube containing 10ug of transfection-ready, dried plasmid DNA (reconstitute with 100 ul of water).
Reconstitution Method:	<ol style="list-style-type: none">1. Centrifuge at 5,000xg for 5min.2. Carefully open the tube and add 100ul of sterile water to dissolve the DNA.3. Close the tube and incubate for 10 minutes at room temperature.4. Briefly vortex the tube and then do a quick spin (less than 5000xg) to concentrate the liquid at the bottom.5. Store the suspended plasmid at -20°C. The DNA is stable for at least one year from date of shipping when stored at -20°C.
RefSeq:	NM_007163.2 , NP_009094.2
RefSeq Size:	4166 bp
RefSeq ORF:	2763 bp
Locus ID:	8170
UniProt ID:	Q15849
Cytogenetics:	18q12.3
Domains:	UT
Protein Families:	Transmembrane
Gene Summary:	The protein encoded by this gene belongs to the urea transporter family. In mammalian cells, urea is the chief end product of nitrogen catabolism, and plays an important role in the urinary concentration mechanism. This protein is expressed in the inner medulla of the kidney, and mediates rapid transepithelial urea transport across the inner medullary collecting duct. Alternatively spliced transcript variants have been found for this gene. [provided by RefSeq, Sep 2011]

Product images:



Circular map for RG213567