

Product datasheet for **RG213563**

LCE1F (NM_178354) Human Tagged ORF Clone

Product data:

Product Type: Expression Plasmids
Product Name: LCE1F (NM_178354) Human Tagged ORF Clone
Tag: TurboGFP
Symbol: LCE1F
Synonyms: LEP6
Mammalian Cell Selection: Neomycin
Vector: pCMV6-AC-GFP (PS100010)
E. coli Selection: Ampicillin (100 ug/mL)
ORF Nucleotide Sequence: >RG213563 representing NM_178354
 Red=Cloning site Blue=ORF Green=Tags(s)

TTTTGTAATACGACTCACTATAGGGCGCCGGGAATTCGTCGACTGGATCCGGTACCGAGGAGATCTGCC
 GCC**CGATCGCC**

ATGTCTTGCCAGCAGAGCCAGCAGCAGTGCCAGCCCCCTCCCAAGTGCCTCCCAAGTGCCTCCCAAGT
 GCCCACACCGAAGTGCCCCCAAAGTGTCCCCCTAAGTGCCCTCCTGTCTTCTCCTGCTGCAGCGTCAG
 CTCCGGAGGCTGCTGTGGCTCCAGCTCTGGGGCTGCTGCAGCTCTGGGGTGGTGGCTGCTGCAGCTCT
 GGGGAGGCGGCTGTTGCCTGAGCCACCACAGACGGCGTAGGTCCCACCGCCACAGACCCAGAGCTCTG
 ACTGCTGCAGCCAGCCCTCAGCGGGCTCCAGCTGCTGCGGAGGGGCAGTGGCCAGCACTCTGGAGGCTG
 CTGC

ACGCGTACGCGGCCGCTCGAG - GFP Tag - GTTTAA

Protein Sequence: >RG213563 representing NM_178354
 Red=Cloning site Green=Tags(s)
 MSCQQSQQCQPPPKCTPKCPPKPTPKCPPKCPPVSSCCSVSSGGCCGSSSGGCCSSGGGGCCSS
 GGGGCCLSHRRRRSHRHRPQSSDCCSQPSAGSSCCGGGSGQHSGGCC

TRTRPLE - GFP Tag - V

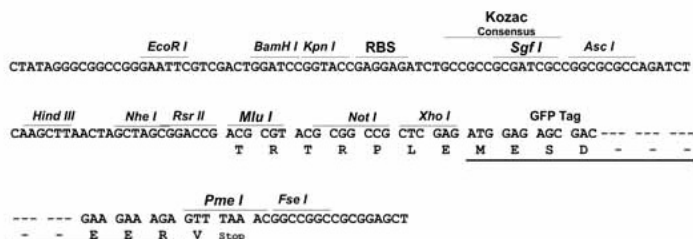
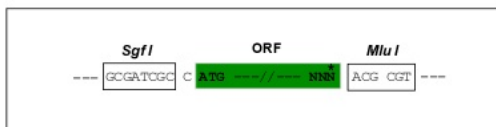
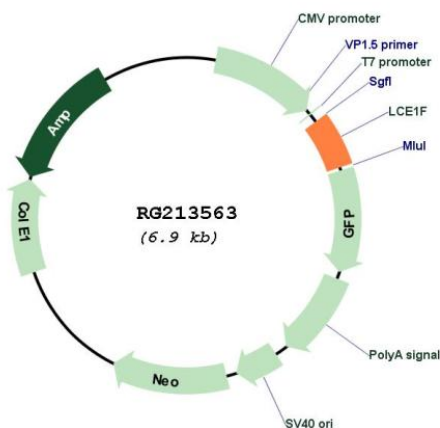
Restriction Sites: Sgfl-MluI



[View online »](#)

Cloning Scheme:

Cloning sites used for ORF Shutting:


Plasmid Map:

ACCN: NM_178354

ORF Size: 354 bp

OTI Disclaimer: The molecular sequence of this clone aligns with the gene accession number as a point of reference only. However, individual transcript sequences of the same gene can differ through naturally occurring variations (e.g. polymorphisms), each with its own valid existence. This clone is substantially in agreement with the reference, but a complete review of all prevailing variants is recommended prior to use. [More info](#)

OTI Annotation:	This clone was engineered to express the complete ORF with an expression tag. Expression varies depending on the nature of the gene.
Components:	The ORF clone is ion-exchange column purified and shipped in a 2D barcoded Matrix tube containing 10ug of transfection-ready, dried plasmid DNA (reconstitute with 100 ul of water).
Reconstitution Method:	<ol style="list-style-type: none">1. Centrifuge at 5,000xg for 5min.2. Carefully open the tube and add 100ul of sterile water to dissolve the DNA.3. Close the tube and incubate for 10 minutes at room temperature.4. Briefly vortex the tube and then do a quick spin (less than 5000xg) to concentrate the liquid at the bottom.5. Store the suspended plasmid at -20°C. The DNA is stable for at least one year from date of shipping when stored at -20°C.
RefSeq:	<u>NM_178354.2</u> , <u>NP_848131.1</u>
RefSeq Size:	357 bp
RefSeq ORF:	357 bp
Locus ID:	353137
UniProt ID:	<u>Q5T754</u>
Cytogenetics:	1q21.3
Gene Summary:	Precursors of the cornified envelope of the stratum corneum.[UniProtKB/Swiss-Prot Function]