

Product datasheet for **RG213518**

COBRA1 (NELFB) (NM_015456) Human Tagged ORF Clone

Product data:

| | |
|---------------------------|---|
| Product Type: | Expression Plasmids |
| Product Name: | COBRA1 (NELFB) (NM_015456) Human Tagged ORF Clone |
| Tag: | TurboGFP |
| Symbol: | NELFB |
| Synonyms: | COBRA1; NELF-B |
| Mammalian Cell Selection: | Neomycin |
| Vector: | pCMV6-AC-GFP (PS100010) |
| E. coli Selection: | Ampicillin (100 ug/mL) |



[View online »](#)

ORF Nucleotide Sequence:

>RG213518 representing NM_015456
 Red=Cloning site Blue=ORF Green=Tags(s)

TTTTGTAATACGACTCACTATAGGGCGGCCGGAATTCGTCGACTGGATCCGGTACCGAGGAGATCTGCC
 GCC**CGGATCGCC**

ATGTTTCGGGGCTGCAGGACCTGGGCGTGGCCAACGGCGAGGACCTGAAGGAGACCCTGACCAACTGCA
 CGGAGCCGCTCAAGGCCATCGAGCAGTTCCAGACAGAGAATGGTGTGCTGCTGCCATCTCTTCAGTCAGC
 CCTCCCCTTCTTGACCTGCACGGGACGCCGGCTGGAGTTCACCAGTCGGTATTTCGATGAGCTGCGG
 GACAAGCTGCTGGAGCGAGTGTAGCCATCGCTTCGGAGGGGAAGGCTGAGGAAAGGTACAAGAAGCTGG
 AAGACCTTCTGGAGAAGAGCTTTTCTCTGGTGAAGATGCCGTCCCTGCAGCCCGTGGTGTGCGTCAT
 GAAGCACCTGCCAAGGTTCCGGAGAAAAAAGTGAAGCTGGTTATGGCTGACAAGGAGCTGTATCGAGCC
 TGGCCGCTGGAGGTGAAGCGGCAGATCTGGCAAGACAACCAGGCCCTCTTCGGGGACGAGGTTTCCCAC
 TCCTGAAGCAGTACATCCTGGAGAAGGAGAGCGCTCTCTTCAGTACAGAGCTCTGTCTGCACAACCTT
 TTTCAGTCTTCCCCAAGACCAGGCGCCAGGGCGAGGTGGTGCAGCGGCTGACGCGGATGGTGGGGAAG
 AACGTGAAGCTGTACGACATGGTGTGAGTTCCTGCGCACGCTTCTCCTGCGCACGCGGAATGTGCACT
 ACTGCACGCTGCGGGCTGAGCTGCTCATGTCCCTGCACGACCTGGACGTGGGTGAAATCTGCACCCTGGA
 CCCGTGCCACAAGTTCACCTGGTGCCTGGACGCTGCATCCGAGAGCGGTTCTGGACAGCAAGAGGGCG
 CGGGAGCTGCAGGGGTTTCTCGATGGCGTCAAGAAGGGCCAGGAGCAGGTGCTGGGGACCTGTCCATGA
 TCCTGTGTGACCCCTTCGCCATCAACACGCTGGCACTGAGCACAGTCAGGCACCTGCAGGAGCTGGTCGG
 CCAGGAGACACTGCCAGGGACAGCCCCGACCTCCTGTGCTGCTCCGGCTGCTGGCGTGGGCCAGGGA
 GCCTGGGACATGATCGACAGCCAGGTCTCAAGGAGCCCAAGATGGAGGTAGAGCTATCACCAGGTTCC
 TCCCGATGCTCATGTCTTCTGGTGGATGACTACACTTCAATGTGGATCAGAAACTCCGGCTGAGGA
 GAAAGCCCAAGTCTCATATCCAAACACACTTCCGAAAGCTTCACTAAGTTTCTGCAGGAGCAGCGCATG
 GCCTGCGAGGTGGGGCTGTACTACGTCCTGCACATCACCAGCAGAGGAACAAGAACGCGCTCCTCCGCC
 TGCTGCCCGGGCTGGTGGAGACCTTTGGCGACTTGGCCTTTGGCGACATCTTCTCCACCTGCTCACGGG
 CAACCTTGGCGTCTGGCCGACGAATTTGCCCTTGGAGACTTCTGCAGCAGCCTCTTCGATGGTCTTCTC
 CTCACCGCTCTCAAGGAAGGAGAACGTGCACCGGCACGCGCTGCGGCTCCTATTACCTGCACCCCA
 GGGTGGCCCCGTAAAGCTGGAGGCGTTCAGAAGGCCCTGGAGCCTACAGGCCAGAGCGGAGAGGCAGT
 GAAGGAGCTTTACTCCAGCTCGGCGAGAAGCTGGAACAGCTGGATCACCAGGAGCCAGCCCGGCACAG
 GCTGCGGAGACGCGGCCCTGGAGCTGCCCTCCCAGCGTGCCCGCCCTGCCCGCTC

ACGCGTACGCGGCCGCTCGAG - GFP Tag - GTTTAA

Protein Sequence:

>RG213518 representing NM_015456
 Red=Cloning site Green=Tags(s)

MFAGLQDLGVANGEDLKETLTNCTEPLKAIEQFQTENGVLPSLQALPFLDLHGTPRLEFHQSVFDEL
 DKLLERSVAIASEGKAERYKKLEDLLEKSFSLVKMPSLQPVVMCMKHLPKVPEKKLKLVMADKELYRA
 CAVEVKRQIWDNQALFGDEVSPLLKQYILEKESALFSTELSVLHNFFSPSPKTRRQGEVVQRLTRMVGK
 NVKLYDMVLQFLRFLRTRNVHYCTLRAELMSLHDLVDGEICTVDPCHKFTWCLDACIRERFVDSKRA
 RELQGFLDGVKKQEQVLGDL SMILCDPFAINTLALSTVRHLQELVGQETLPRDSPDLLLRLALGQG
 AWDMIDSQVFKPKMEVELITRFLPMLMSFLVDDYTFNVDQKLPAAEKAPVSYPNLTPESFTKFLQEQRM
 ACEVGLYYVLHITKQRNKNALLRLLPGLVETFGDLAFGDIFLHLLTGNLALLADEFALDFCSSLFDGFF
 LTASPRKENVHRHALRLLIHLHPRVAPSKLEALQKALEPTGQSGEAVKELYSQLGEKLEQLDHRKPSPAQ
 AAETPALELPLPSVPAPAPL

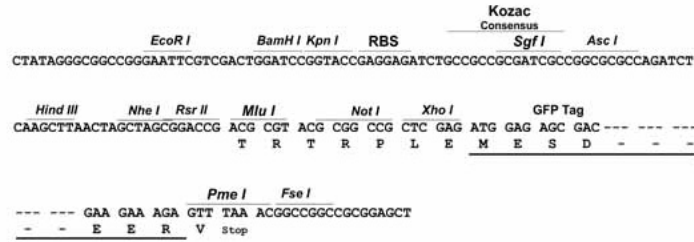
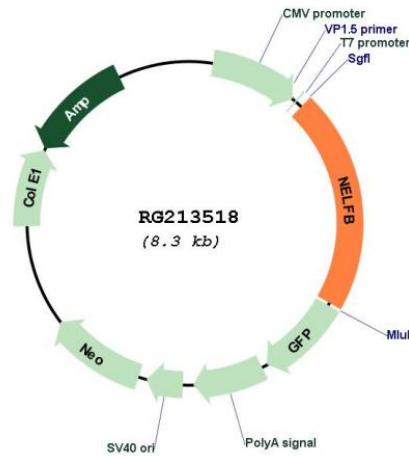
TRTRPLE - GFP Tag - V

Restriction Sites:

Sgfl-MluI

Cloning Scheme:

Cloning sites used for ORF Shutting:


Plasmid Map:


ACCN: NM_015456

ORF Size: 1740 bp

| | |
|-------------------------------|---|
| OTI Disclaimer: | The molecular sequence of this clone aligns with the gene accession number as a point of reference only. However, individual transcript sequences of the same gene can differ through naturally occurring variations (e.g. polymorphisms), each with its own valid existence. This clone is substantially in agreement with the reference, but a complete review of all prevailing variants is recommended prior to use. More info |
| OTI Annotation: | This clone was engineered to express the complete ORF with an expression tag. Expression varies depending on the nature of the gene. |
| Components: | The ORF clone is ion-exchange column purified and shipped in a 2D barcoded Matrix tube containing 10ug of transfection-ready, dried plasmid DNA (reconstitute with 100 ul of water). |
| Reconstitution Method: | <ol style="list-style-type: none"> 1. Centrifuge at 5,000xg for 5min. 2. Carefully open the tube and add 100ul of sterile water to dissolve the DNA. 3. Close the tube and incubate for 10 minutes at room temperature. 4. Briefly vortex the tube and then do a quick spin (less than 5000xg) to concentrate the liquid at the bottom. 5. Store the suspended plasmid at -20°C. The DNA is stable for at least one year from date of shipping when stored at -20°C. |
| RefSeq: | NM_015456.3 , NP_056271.2 |
| RefSeq Size: | 2622 bp |
| RefSeq ORF: | 1887 bp |
| Locus ID: | 25920 |
| UniProt ID: | Q8WX92 |
| Cytogenetics: | 9q34.3 |
| Protein Families: | Transcription Factors |
| Gene Summary: | NELFB is a subunit of negative elongation factor (NELF), which also includes NELFA (WHSC2; MIM 606026), either NELFC or NELFD (TH1L; MIM 605297), and NELFE (RDBP; MIM 154040). NELF acts with DRB sensitivity-inducing factor (DSIF), a heterodimer of SPT4 (SUPT4H1; MIM 603555) and SPT5 (SUPT5H; MIM 602102), to cause transcriptional pausing of RNA polymerase II (see MIM 180660) (Narita et al., 2003 [PubMed 12612062]).[supplied by OMIM, Mar 2008] |