

Product datasheet for **RG213485**

ADAM22 (NM_021721) Human Tagged ORF Clone

Product data:

Product Type:	Expression Plasmids
Product Name:	ADAM22 (NM_021721) Human Tagged ORF Clone
Tag:	TurboGFP
Symbol:	ADAM22
Synonyms:	ADAM 22; DEE61; EIEE61; MDC2
Mammalian Cell Selection:	Neomycin
Vector:	pCMV6-AC-GFP (PS100010)
E. coli Selection:	Ampicillin (100 ug/mL)



[View online »](#)

ORF Nucleotide
Sequence:

>RG213485 representing NM_021721
 Red=Cloning site Blue=ORF Green=Tags(s)

TTTTGTAATACGACTCACTATAGGGCGGCCGGAATTCGTGACTGGATCCGGTACCGAGGAGATCTGCC
 GCCGCGATCGCC

ATGCAGGCGGCAGTGGCTGTGTCCTGCCCTTCTTGTCTGTCTGTCTGCTGGGACCTGCCCTCCGGCGC
 GCTGCGGCCAGGCAGGAGACGCCTCATTGATGGAGCTAGAGAAGAGGAAGGAAAACCGCTTCGTGGAGCG
 CCAGAGCATCGTGCCACTGCGCCTCATCTACCGCTCGGGCGGCGAAGACGAAAGTCGGCAGCAGCGGCTC
 GACACGCGGGTGCGGGGCGACCTCGGTGGCCCGCAGTTGACTCATGTTGACCAAGCAAGCTTCCAGGTTG
 ATGCCCTTGAACGTCATTCTCGATGTCGTGCTAAATCATGATTTGCTGCTCTGAATACATAGA
 GAGACACATTGAACATGGAGGCAAGACTGTGGAAGTTAAAGGAGGAGAGCACTGTACTACCAGGGCCAT
 ATCCGAGGAAACCCTGACTCATTGTTGCATTGTCAACATGCCACGGACTTCATGGGATGTTCTATGACG
 GGAACCACACATATCTCATTGAGCCAGAAGAAAATGACACTACTCAAGAGGATTTCCATTTTCATTCACT
 TTACAAAATCCAGACTGTTGAATTTTCCTTGGATGATCTCCATCTGAATTTTCAGCAAGTAAACATTACT
 CCATCAAAAATTTATTTTGAAGCCAAGACAAAAAGGAGTAAACGGCAGCTTCGTGATATCTCGTAATG
 TAGAAGAAGAAAACAAAATACATTGAACTGATGATTGTGAATGATCACCTATGTTTAAAAACATCGGCT
 TTCCGTTGTACATACCAATACCTATGCGAAATCTGTGGTGAACATGGCAGATTTAATATATAAGACCAA
 CTTAAGACCAGGATAGTATTGGTTGCTATGGAAACCTGGGCGACTGACAACAAGTTTGCCATATCTGAAA
 ATCCATTGATCACCTACGTGAGTTTATGAAATACAGGAGGGATTTATCAAAGAGAAAAGTGATGCAGT
 TCACCTTTTTTCGGGAAGTCAATTTGAGAGTAGCCGAGCGGGCAGCTTATATTGGTGGGATTTGCTCG
 TTGCTGAAAGGAGGAGGCGTGAATGAATTTGGGAAAAGTAAAGTAAAGTAAAGTAAAGTAAAGTAAAGTAAAG
 TAGCCCAATAATTTGGTATTATCTCAGACAAAAGAAAAGTTAGCAAGTGGTGAATGTAATGTAATGTAATGTAAT
 GTGGTCCGGGTGCATAAATGGGAGACACTGGCTATTATCTTCTAAAAAGTTCACCCAGTGAATATTGAA
 GAGTATCATGACTTCTGAATAGTGGAGGTGGTGCCTGCCTTTTCAACAACCTTCTAAGCTTCTTGATC
 CTCCTGAGTGTGGCAATGGCTTCACTTGAACCTGGAGAGGAGTGTGATTGTGGAACCCCGGCCAATGTGT
 CCTTGAAGGAGCAGAGTGTGTAAGAAATGCACCTTGACTCAAGACTCTCAATGCAGTGACGGTCTTTTGC
 TGTAAAAAGTGAAGTTTTCAGCCTATGGGCACTGTGTGCCGAGAAGCAGTAAATGATTGTGATATTCGTG
 AAACGTGCTCAGGAAATCAAGCCAGTGTGCCCTAATATTCATAAAATGGATGGATATTCATGTGATGG
 TGTTCAAGGAATTTGCTTTGGAGGAAGATGCAAAACCAGAGATAGACAATGCAAAATACATTTGGGGCAA
 AAGGTGACAGCATCAGACAAATATTGCTATGAGAACTGAATATTGAAGGACGGAGAAGGGTAACTGTG
 GAAAGACAAAGACACATGGATACAGTGAACAACCGGATGTGCTTTGTGGTTACCTTTTGTGTACCAA
 TATTGGCAATATCCCAAGGCTTGGAGAACTCGATGGTGAATCACAATCACTTTAGTTGTGCAGCAAGGA
 AGAACATTAAGTGCAGTGGTGGCATGTTAAGCTTGAAGAAGATGTAGATCTTGGCTATGTGGAAGATG
 GGACACCTTGGTCCCAATGATGTGCTTAGAACACAGGTGTCTTCTGTGGCTTCTTCAACTTTAG
 TACTTGCTTGAGCAGTAAAGAAGGCACTATTGCTCAGGAAATGGAGTTTGCAGTAAATGAGCTGAAGTGT
 GTGTGAACAGACACTGGATAGGTTCTGATTGCAACACTTACTCCCTCACAATGATGATGCAAAGACTG
 GTACTACTCTGTCTGGCAATGGTGTGCTGGCACCAATATCATAATAGGCATAATTGCTGGCACCATTTT
 AGTGTGGCCCTCATATTAGGAATAACTGCGTGGGTTATAAAAACTATCGAGAACAGAGGTCAAATGGG
 CTCTCTATTCTTGGAGTAAAAGGATTCAGACACAAAACATATTTTCAGACATCTGTGAAAATGGGCGAC
 CTGAAAGTAACTCTTGGCAAGGTAACTGGGAGGCAACAAAAAGAAAATCAGAGGCAAAAGATTTAGACC
 TCGGTCTAATTCAACTGAG

ACGCGTACGCGGCCGCTCGAG - GFP Tag - GTTTAA

Protein Sequence: >RG213485 representing NM_021721
 Red=Cloning site Green=Tags(s)

```

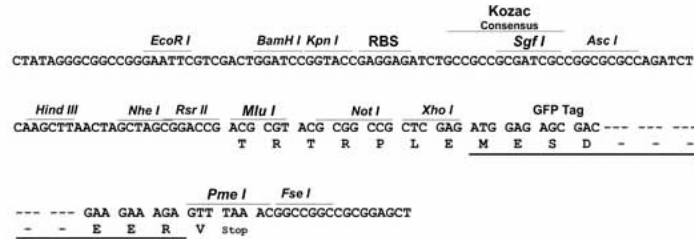
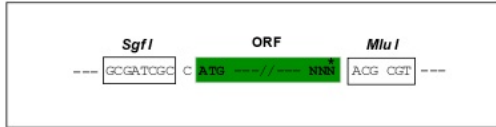
MQAAVAVSVPFLLL CVLGTCPPARCGQAGDASLMELEKRKENRFVERQSI VPLRLIYRSGGEDES RHDAL
DTRVVRGDLGGPQLTHVDQASFQVDAFGTSFILDVVLNHDLLSSEYIERHIEHGKKTVEVKGGEHCYYQGH
IRGNPDSFVALSTCHGLHGMFYDGNHTYLIEPEENDTTQEDFHFHSVYKSRLFEFSLDDL PSEFQQVNIT
PSKFILKPRPKRSKRQLRRYPRNVEEETKYIELMIVNDHLMFKKHRLSVVHTNTYAKSVVN MADLIYKDQ
LKTRIVLVAMETWATDNKFAISENPLITLREFMKYRRDFIKEKSDAVHLFSGSQFESSRSGAAYIGGICS
LLKGGGVNEFGKTDLMAVTLAQLAHNIGIISDKRKLASGECKCEDTWSGCIMGDTGY YLPKKFTQC NIE
EYHDFLNSGGGACL FNKPSKLLDPPECNGFIETGEECD CGTPAECVLEGAECCKCTLTQDSQCS DGLC
CKKCKFQPMGTVCREAVNDCDIRETCSGNSSQCAPNIHKMDGYSCDGVQGICFGGRCKTRDRQCKYIWGQ
KVTASDKYCYEKLNI EGTEKGNCGKDKDTWIQCNRDVL CGYLLCTNIGNIPRLGELDGEITSTL VVQQG
RTLNCSSGGHVKLEEDVDLGYVEDGT PCGPQMMCLEHRCLPVASFNFSTCLSSKEGTICSGNGVCSNELKC
VCNRHWIGSDCNTYFPHNDDAKTGITLSGNGVAGTNIIIGI IAGTILVLALILGITAWGYKNYREQRSNG
LSHSWSERIPDTKHISD ICENGRPRSNSWQGNLGGNKKKIRGKRFRPRS NSTE
  
```

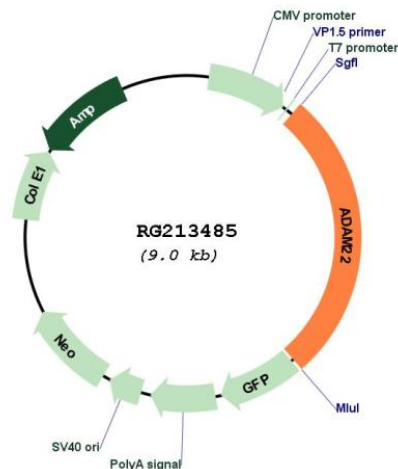
TRTRPLE - GFP Tag - V

Restriction Sites: Sgfl-MluI

Cloning Scheme:

Cloning sites used for ORF Shutting:



Plasmid Map:


ACCN: NM_021721

ORF Size: 2469 bp

OTI Disclaimer: The molecular sequence of this clone aligns with the gene accession number as a point of reference only. However, individual transcript sequences of the same gene can differ through naturally occurring variations (e.g. polymorphisms), each with its own valid existence. This clone is substantially in agreement with the reference, but a complete review of all prevailing variants is recommended prior to use. [More info](#)

OTI Annotation: This clone was engineered to express the complete ORF with an expression tag. Expression varies depending on the nature of the gene.

Components: The ORF clone is ion-exchange column purified and shipped in a 2D barcoded Matrix tube containing 10ug of transfection-ready, dried plasmid DNA (reconstitute with 100 ul of water).

Reconstitution Method:

1. Centrifuge at 5,000xg for 5min.
2. Carefully open the tube and add 100ul of sterile water to dissolve the DNA.
3. Close the tube and incubate for 10 minutes at room temperature.
4. Briefly vortex the tube and then do a quick spin (less than 5000xg) to concentrate the liquid at the bottom.
5. Store the suspended plasmid at -20°C. The DNA is stable for at least one year from date of shipping when stored at -20°C.

RefSeq: [NM_021721.4](#)

RefSeq Size: 2772 bp

RefSeq ORF: 2472 bp

Locus ID: 53616

UniProt ID: [Q9P0K1](#)

Cytogenetics: 7q21.12

Domains: Reprolysin, DISIN, Pep_M12B_propep

Protein Families: Druggable Genome, Protease, Transmembrane

Gene Summary: This gene encodes a member of the ADAM (a disintegrin and metalloprotease domain) family. Members of this family are membrane-anchored proteins structurally related to snake venom disintegrins, and have been implicated in a variety of biological processes involving cell-cell and cell-matrix interactions, including fertilization, muscle development, and neurogenesis. Unlike other members of the ADAM protein family, the protein encoded by this gene lacks metalloprotease activity since it has no zinc-binding motif. This gene is highly expressed in the brain and may function as an integrin ligand in the brain. In mice, it has been shown to be essential for correct myelination in the peripheral nervous system. Alternative splicing results in several transcript variants.[provided by RefSeq, Dec 2010]