

Product datasheet for **RG213469**

GJA8 (NM_005267) Human Tagged ORF Clone

Product data:

Product Type: Expression Plasmids
Product Name: GJA8 (NM_005267) Human Tagged ORF Clone
Tag: TurboGFP
Symbol: GJA8
Synonyms: CAE; CAE1; CTRCT1; CX50; CZP1; MP70
Mammalian Cell Selection: Neomycin
Vector: pCMV6-AC-GFP (PS100010)
E. coli Selection: Ampicillin (100 ug/mL)
ORF Nucleotide Sequence: >RG213469 representing NM_005267
 Red=Cloning site Blue=ORF Green=Tags(s)

TTTTGTAATACGACTCACTATAGGGCGGCCGGAATTCGTCGACTGGATCCGGTACCGAGGAGATCTGCC
 GCC**CGATCGCC**

ATGGGCGACTGGAGTTTCTGGGGAACATCTTGGAGGAGTGAATGAGCACTCCACCGTCATCGGCAGAG
 TCTGGCTCACCGTGCTTTTCATCTTCCGGATCCTCATCCTTGGCACGGCCGAGATTCTGTGGGGGA
 TGAGCAATCCGACTTCGTGTGCAACACCCAGCAGCCTGGCTGCGAGAACGTCTGTACGACGAGGCCTTT
 CCCATCTCCACATTCGCTCTGGGTGCTGAGATCATCTTCGTCTCCACCCGTCCTGATGTACGTGG
 GGCACGGGTGCACTACGTCGGCATGGAGGAGAAGCGCAAAGCCGCGAGGCGGAGGAGCTGGGCCAGCA
 GCGGGGACTAACGGCGGCCCGGACCAGGGCAGCGTCAAGAAGAGCAGCGGCAGCAAAGGCACTAAGAAG
 TTCGGCTGGAGGGGACCTGCTGAGGACCTACATCTGCCACATCATCTTCAAGACCTCTTTGAAGTGG
 GCTTATCGTGGGCCACTACTTCTGTACGGGTTCCGGATCCTGCCTCTGTACCGCTGCAGCCGGTGGCC
 CTGCCCAATGTGGTGGACTGCTTCGTGTCCCGGCCACGGAGAAAACCATCTTCATCCTGTTATGTTG
 TCTGTGGCCTCTGTGTCCCTATTCCTCAACGTGATGGAGTTGGGCCACCTGGCCGTAAGGGGATCCGGT
 CTGCCTTGAAGAGGCCTGTAGAGCAGCCCTGGGGGAGATTCTGAGAAATCCCTCCACTCCATTGCTGT
 TTCCTCCATCCAGAAAGCCAAGGGCTATCAGCTCCTAGAAGAAGAAAAATCGTTTCCACTATTTCCCT
 TTGACCGAGTTGGGATGGTGGAGACCAGCCACTGCCTGCCAAGCCTTCAATCAGTTCGAGGAGAAGA
 TCAGCACAGGACCCCTGGGGACTTGTCCCGGGCTACCAAGAGACACTGCCTTCCCTACGCTCAGGTGGG
 GGCACAAGAAGTGGAGGGCGAGGGGCCCTGCAGAGGAGGGAGCCGAACCCGAGGTGGGAGAGAAGAAG
 GAGGAAGCAGAGAGGCTGACCACGGAGGAGCAGGAGAAGGTGGCCGTGCCAGAGGGGGAGAAAGTAGAGA
 CCCCCGAGTGGATAAGGAGGGTAAAAAGAAGAGCCGAGTCCGAGAAGGTGTCAAAGCAAGGGCTGCC
 AGCTGAGAAGACACCTTCACTCTGTCCAGAGCTGACAACAGATGATGCCAGACCCCTGAGCAGGCTAAGC
 AAAGCCAGCAGCCGAGCCAGGTGACAGCATCTAACCGTA

ACCGTACGGCGCCGCTCGAG - GFP Tag - GTTTAA



[View online >](#)

Protein Sequence: >RG213469 representing NM_005267
 Red=Cloning site Green=Tags(s)

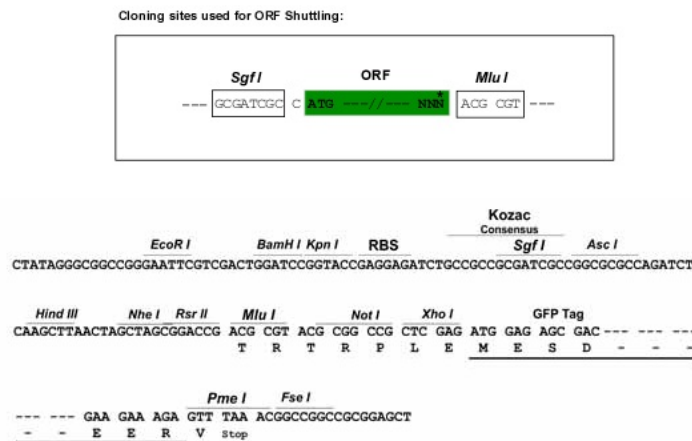
```
MGDWSFLGNILEEVNEHSTVIGRWLTVLFI FRILILGTA AEFVWGDEQSD FVCNTQQPGCENVCYDEAF
PISHIRLWV LQIIFVSTPSLMYVGHAVHYVRMEEKRSREAEELGQQAGTNGGPDQGSVKKSSGSKGTKK
FRLEGTLR TYICHIIFKTLFEVGFIVGHYFLYGRILPL YRCSRWPCPNVDC FVSRPTEKIFILFML
SVASVSLF LNMELGHLGLK GIRSALKRPVEQPLGEI PEKSLHSIAVSSIQAKGYQLLEEEKIVSHYFP
LTEVGMVETSPLPAKPFNQFE EKI STGPLGDL SRGYQETLPSYAQVGAQEVEGEGPPAEEGAEPVGEKK
EEAERLTTEEQEKVAVPEGEK VETPGVDKEGEKEE PQSEKVS KQGLPAEKTPSLCPELTTDDARPLSRLS
KASSRARSDDLTV
```

TRTRPLE - GFP Tag - V

Chromatograms: https://cdn.origene.com/chromatograms/ja1985_a05.zip

Restriction Sites: SgfI-MluI

Cloning Scheme:



ACCN: NM_005267

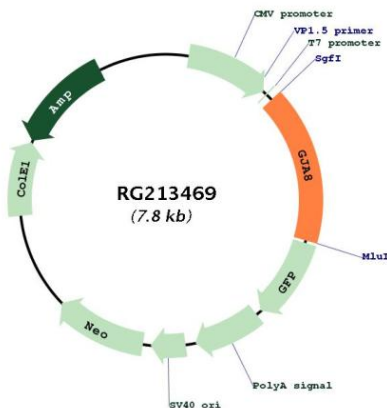
ORF Size: 1299 bp

OTI Disclaimer: Due to the inherent nature of this plasmid, standard methods to replicate additional amounts of DNA in E. coli are highly likely to result in mutations and/or rearrangements. Therefore, OriGene does not guarantee the capability to replicate this plasmid DNA. Additional amounts of DNA can be purchased from OriGene with batch-specific, full-sequence verification at a reduced cost. Please contact our customer care team at custsupport@origene.com or by calling 301.340.3188 option 3 for pricing and delivery.

The molecular sequence of this clone aligns with the gene accession number as a point of reference only. However, individual transcript sequences of the same gene can differ through naturally occurring variations (e.g. polymorphisms), each with its own valid existence. This clone is substantially in agreement with the reference, but a complete review of all prevailing variants is recommended prior to use. [More info](#)

OTI Annotation:	This clone was engineered to express the complete ORF with an expression tag. Expression varies depending on the nature of the gene.
Components:	The ORF clone is ion-exchange column purified and shipped in a 2D barcoded Matrix tube containing 10ug of transfection-ready, dried plasmid DNA (reconstitute with 100 ul of water).
Reconstitution Method:	<ol style="list-style-type: none"> 1. Centrifuge at 5,000xg for 5min. 2. Carefully open the tube and add 100ul of sterile water to dissolve the DNA. 3. Close the tube and incubate for 10 minutes at room temperature. 4. Briefly vortex the tube and then do a quick spin (less than 5000xg) to concentrate the liquid at the bottom. 5. Store the suspended plasmid at -20°C. The DNA is stable for at least one year from date of shipping when stored at -20°C.
RefSeq:	NM_005267.5
RefSeq Size:	1374 bp
RefSeq ORF:	1302 bp
Locus ID:	2703
UniProt ID:	P48165
Cytogenetics:	1q21.2
Protein Families:	Druggable Genome, Ion Channels: Other, Transmembrane
Gene Summary:	This gene encodes a transmembrane connexin protein that is necessary for lens growth and maturation of lens fiber cells. The encoded protein is a component of gap junction channels and functions in a calcium and pH-dependent manner. Mutations in this gene have been associated with zonular pulverulent cataracts, nuclear progressive cataracts, and cataract-microcornea syndrome. [provided by RefSeq, Dec 2009]

Product images:



Circular map for RG213469