

Product datasheet for **RG213454**

MID1 (NM_001098624) Human Tagged ORF Clone

Product data:

Product Type:	Expression Plasmids
Product Name:	MID1 (NM_001098624) Human Tagged ORF Clone
Tag:	TurboGFP
Symbol:	MID1
Synonyms:	BBBG1; FXY; GBBB1; MIDIN; OGS1; OS; OSX; RNF59; TRIM18; XPRF; ZNFXY
Mammalian Cell Selection:	Neomycin
Vector:	pCMV6-AC-GFP (PS100010)
E. coli Selection:	Ampicillin (100 ug/mL)



[View online »](#)

ORF Nucleotide Sequence:

>RG213454 representing NM_001098624
 Red=Cloning site Blue=ORF Green=Tags(s)

TTTTGTAATACGACTCACTATAGGGCGGCCGGGAATTCGTCGACTGGATCCGGTACCGAGGAGATCTGCC
 GCC**CGGATCGCC**

ATGGAACACTGGAGTCAGAAGTACCTGCCCATTGTCTGGAGCTCTTTGAGGACCTCTTCTACTGC
 CCTGCGCACACAGCCTCTGCTTCAACTGCGCCACCGCATCCTAGTATCACACTGTGCCACCAACGAGTC
 TGTGGAGTCCATCACCGCCTTCCAGTGCACCCACCTGCCGGCATGTCATCACCCCTCAGCCAGCGAGGTCTA
 GACGGGCTCAAGCGCAACGTCACCCACAGAACATCATCGACAGGTTCCAGAAAGCATCAGTGAGCGGGC
 CCAACTCTCCAGCGAGACCCGTCGGGAGCGGGCCTTTGACGCCAACACCATGACCTCCGCCGAGAAGGT
 CCTCTGCCAGTTTTGTGACCAGGATCCTGCCAGGACGCTGTGAAGACCTGTGTCACCTGTGAAGTATCC
 TACTGTGACGAGTGCCTGAAAGCCACTACCCGAATAAGAAGCCCTTTACAGGCCATCGTCTGATTGAGC
 CAATCCGGACTCTCACATCCGGGGCTGATGTGCTTGGAGCATGAGGATGAGAAGTGAATATGTACTG
 TGTGACCGATGACCAGTTAATCTGTGCCTTGTGTAAGTGGTGGCGGGACCGCATCATCAGGTGGCA
 GCTTTGAGTGAGCGCTATGACAAATTGAAGCAAACCTTAGAGAGTAACCTACCAACCTTATTAAGAGGA
 ACACAGAACTGGAGACCCCTTTGGCTAAACTCATCAAACCTGTCAACATGTTGAAGTCAATGCATCACG
 TCAAGAAGCCAAATTGACAGAGGAGTGTGATCTTCTCATTGAGATCATTAGCAAAAGACGACAGATTATT
 GGAACCAAGATCAAAGAAGGGAAGGTGATGAGGCTTCGAAAACCTGGCTCAGCAGATTGCAAACTGCAAAAC
 AGTGCATTGAGCGGTGAGCATCACTCATCTCCAAAGCGGAACTCTCTGAAGGAGAATGATCATGCGCG
 TTTCTACAGACTGCTAAGAATATCACCGAGAGTCTCCATGGCAACTGCATCCTCCAGGTTCTAATT
 CCTGAAATCAACCTCAATGACACATTTGACACCTTTGCCTTAGATTTTCCCGAGAGAAGAACTGCTAG
 AATGCTGGATTACCTTACAGCTCCCAACCTCCACAATTAGAGAAGAGCTCTGCACAGTTCATATGA
 CACCATCACTGTGATTGGACCTCCGATGATGAGTTCAGCGTGGTCTCCTACGAGCTCCAGTACACCATA
 TTCACCGACAAGCCAACGTCGTTAGTCTGTGTAATTCGGCTGATAGCTGGATGATAGTACCCAACATCA
 AGCAGAACCCTACACGGTGCACGGTCTGCAGAGCGGCACCAAGTACATCTTCATGGTCAAGGCCATCAA
 CCAGGGCGGCAGCCGAGCAGTGAAGTGGGAAGTTGAAGACAAACAGCCAACCATTTAAACTGGATCCC
 AAATCTGCTCATCGAAAACCTGAAGGTGTCCATGATAACTTGACAGTGAACGTCATGAGTCAATCCA
 AGAAGAGTCACACACCTGAACGCTTCACAGCCAGGGGAGCTATGGAGTAGCTGGAAATGTGTTTATTGA
 TAGTGGCCGGCATTATTGGGAAGTGGTCATAAGTGAAGCACATGGTATGCCATTGGTCTTGCTTACAAA
 TCAGCCCCGAAGCATGAATGGATTGGGAAGAACTGCTTCTGGCGCTCTGCCGCTGCAACAATAACT
 GGGTGGTGAACACAATAGCAAGGAAATCCCATTTGAGCCTGCCCCACCTCCGGCGCGTGGGCATCCT
 GCTGGACTATGATAACGGCTCTATCGCCTTTTATGATGCTTTGAACTCCATCCACCTCTACACCTTCGAC
 GTCGCATTTGCGCAGCCTGTTTGGCCACCTTACCGTGTGGAACAAGTGTCTGACGATTATCACTGGGC
 TCCTATCCCAGACCATTTGGACTGCACAGAGCAGCTGCCG

ACGCGTACGCGGGCGCTCGAG - GFP Tag - GTTTAA

Protein Sequence: >RG213454 representing NM_001098624
 Red=Cloning site Green=Tags(s)

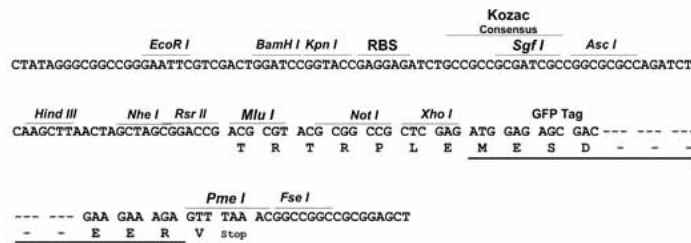
METLESELTCPICLELFEDPLLLPCAHSLCFNCAHRILVSHCATNESVESITAFQCPTCRHVITLSQRGL
 DGLKRNVTLQNIIDRFQKASVSGPNPSETRRERAFDANTMTSAEKVLCQFCDQDPAQDAVKTCVTCEVS
 YCDECLKATHPNKKPFTGHRLIEPIPDSHIRGLMCLHEHEDEKVNMYCVTDDQLICALCKLVGRHRDHQVA
 ALSERYDKLKQNLESNLTNLIKRNTLETLLAKLIQTCQHVEVNASRQEAKLTEECDLLIEIIQRRQII
 GTKIKEGKVMRLRKLAAQIQIANCKQCIERSASLISQAEHSLKENDHARFLQTAKNITERVSMATASSQVLI
 PEINLNDTFDFALDFSREKLLLECLDYLTAPNPPTIREELCTASYDTITVHWTSDDEFVSVSYELQYTI
 FTGQANVVSLCNSADSWMIVPNIKQNHYTVHGLQSGTKYIFMVKAINQAGRSSEPGKLTNSQPFLKDP
 KSAHRKLVSHDNLTVRDESSKKSHTPERFSTSQGSYGVAGNVFIDSGRHYWEVVISGSTWYAIGLAYK
 SAPKHEWIGKNSASWALCRCNNWVVRHNSKEIPIEPAPHLRRVGILLDYDNGSIAFYDALNSIHLTYFD
 VAFAQPVCPTFTVWNKCLTIITGLPIPDLHDCTEQLP

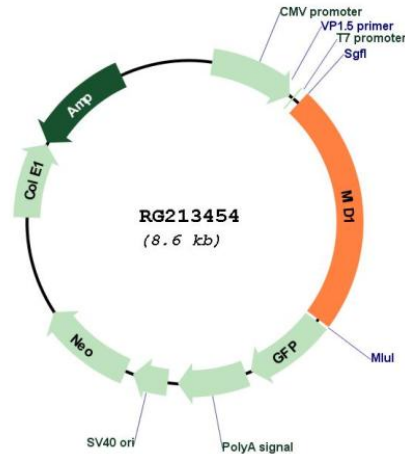
TRTRPLE - GFP Tag - V

Restriction Sites: SgfI-MluI

Cloning Scheme:

Cloning sites used for ORF Shuttling:



Plasmid Map:


ACCN: NM_001098624

ORF Size: 2001 bp

OTI Disclaimer: The molecular sequence of this clone aligns with the gene accession number as a point of reference only. However, individual transcript sequences of the same gene can differ through naturally occurring variations (e.g. polymorphisms), each with its own valid existence. This clone is substantially in agreement with the reference, but a complete review of all prevailing variants is recommended prior to use. [More info](#)

OTI Annotation: This clone was engineered to express the complete ORF with an expression tag. Expression varies depending on the nature of the gene.

Components: The ORF clone is ion-exchange column purified and shipped in a 2D barcoded Matrix tube containing 10ug of transfection-ready, dried plasmid DNA (reconstitute with 100 ul of water).

Reconstitution Method:

1. Centrifuge at 5,000xg for 5min.
2. Carefully open the tube and add 100ul of sterile water to dissolve the DNA.
3. Close the tube and incubate for 10 minutes at room temperature.
4. Briefly vortex the tube and then do a quick spin (less than 5000xg) to concentrate the liquid at the bottom.
5. Store the suspended plasmid at -20°C. The DNA is stable for at least one year from date of shipping when stored at -20°C.

RefSeq: [NM_001098624.2](#), [NP_001092094.1](#)

RefSeq Size: 6147 bp

RefSeq ORF: 2004 bp

Locus ID: 4281

UniProt ID: [O15344](#)

Cytogenetics: Xp22.2

Protein Families: Druggable Genome

Protein Pathways: Ubiquitin mediated proteolysis

Gene Summary: The protein encoded by this gene is a member of the tripartite motif (TRIM) family, also known as the 'RING-B box-coiled coil' (RBCC) subgroup of RING finger proteins. The TRIM motif includes three zinc-binding domains, a RING, a B-box type 1 and a B-box type 2, and a coiled-coil region. This protein forms homodimers which associate with microtubules in the cytoplasm. The protein is likely involved in the formation of multiprotein structures acting as anchor points to microtubules. Mutations in this gene have been associated with the X-linked form of Opitz syndrome, which is characterized by midline abnormalities such as cleft lip, laryngeal cleft, heart defects, hypospadias, and agenesis of the corpus callosum. This gene was also the first example of a gene subject to X inactivation in human while escaping it in mouse. Alternative promoter use, alternative splicing and alternative polyadenylation result in multiple transcript variants that have different tissue specificities. [provided by RefSeq, Dec 2016]