

Product datasheet for **RG213427**

ZIP Kinase (DAPK3) (NM_001348) Human Tagged ORF Clone

Product data:

| | |
|---------------------------|---|
| Product Type: | Expression Plasmids |
| Product Name: | ZIP Kinase (DAPK3) (NM_001348) Human Tagged ORF Clone |
| Tag: | TurboGFP |
| Symbol: | DAPK3 |
| Synonyms: | DLK; ZIP; ZIPK |
| Mammalian Cell Selection: | Neomycin |
| Vector: | pCMV6-AC-GFP (PS100010) |
| E. coli Selection: | Ampicillin (100 ug/mL) |



[View online »](#)

ORF Nucleotide Sequence:

>RG213427 representing NM_001348
 Red=Cloning site Blue=ORF Green=Tags(s)

CTATAGGGCGGCCGGAATTCGTCTGACTGGATCCGGTACCGAGGAGATCTGCC
 GCC**CGATCGCC**

ATGTCCACGTTTCAGGCAGGAGACGTGGAGGACCATTATGAGATGGGGGAGGAGCTGGGCAGCGCCAGT
 TTGCGATCGTGCGGAAGTGCCGGCAGAAGGGCACGGGCAAGGAGTACGCAGCCAAGTTTCATCAAGAAGCG
 CCGCCTGTCTCAGCCGGCGTGGGGTGGAGCGGAGGAGATCGAGCGGAGGTGAACATCCTGCGGGAG
 ATCCGGCACCCCAACATCATCACCTGCACGACATCTTCGAGAACAAGACGGACGTGGTCTCATCTGG
 AGCTGGTCTCTGGCGGGGAGCTCTTTGACTTCTGGCGGAGAAGGAGTCGCTGACGGAGGACGAGGCCAC
 CCAGTTCTCAAGCAGATCCTGGACGGCGTTCCTACCTGCACTCTAAGCGCATCGCACACTTTGACCTG
 AAGCCGAAAACATCATGCTGCTGGACAAGAACGTGCCCAACCCACGAATCAAGTCATCGACTTCGGCA
 TCGCGACAAGATCGAGGCGGGGAAACGAGTTCAAGAACATCTTCGGCACCCCGGAGTTTGTGGCCCCAGA
 GATTGTGAACTATGAGCCGCTGGCCTGGAGGCGGACATGTGGAGCATCGGTGTCATCACCTATATCCTC
 CTGAGCGGTGCATCCCGTTCTGGGCGAGACCAAGCAGGAGACGCTCACCAACATCTCAGCCGTGAACT
 ACGACTTCGACGAGGAGTACTTCAGCAACACCAGCGAGCTGGCCAAGGACTTCATTTCGCCGGCTGCTCGT
 CAAAGATCCCAAGCGGAGAATGACCATTGCCAGAGCCTGGAACATTCCTGGATTAAGGCGATCCGGCGG
 CGGAACGTGCGTGGTGGAGACAGCGGCCGAAGCCGAGCGGGCGCGCCTGAAGACCACGCGTCTGAAGG
 AGTACACCATCAAGTCGCACTCCAGCTTCCCGCCAACAACAGCTACGCCGACTTCGAGCGCTTCTCCAA
 GGTGCTGGAGGAGGCGGGCGCCGAGGAGGGCTGCGCGAGCTGCAGCGCAGCCGGCGGCTCTGCCAC
 GAGGACGTGGAGGCGCTGGCCGCATCTACGAGGAGAAGGAGGCTGGTACCAGGAGGAGCGCAGCCAGCC
 TGGGCCAGGACCTGCGGAGGCTACGGCAGGAGCTGCTCAAGCCGAGGCGCTCAAGCGGAGGCGCAGGA
 GGAGGCCAAGGGCGCGCTGCTGGGACCAAGCGCCTCAAGCGCCGCTTACGCCGCTGGAGAACCGCTAC
 GAGGCGCTGGCCAAGCAAGTAGCCTCCGAGATGCGCTTCGTGCAGGACCTCGTGCAGCGCCCTGGAGCAGG
 AGAAGCTGCAGGGCGTGGAGTGGGGCTGCGC

CTCGAG - GFP Tag - GTTTAA

Protein Sequence:

>RG213427 representing NM_001348
 Red=Cloning site Green=Tags(s)

MSTFRQEDVEDHYEMGEELGSGQFAIVRKCRQKGTGKEYAAKFIKKRRLSSRRGVSREEIEREVNILRE
 IRHPNIIITLHDIFENKTDVVLILELVSGGELFDFLAEKESL TEDEATQFLKQILDGVHYLHASKRIAHFDL
 KPENIMLLDKNVNPRIKLIDFGIAHKIEAGNEFKNIFGTFEVAPEIVNYEPLGLEADMWSIGVITYIL
 LSGASPFLETQETLTNISAVNYDFDEEYFSNTSELAKDFIRRLVKDPKRRMTIAQSLEHSHWIKAIRR
 RNVRGEDSGRKPERRRLKTRRLKEYTIKSHSLPPNNSYADFERFSKVLEEAEEEEGLRELQRSRLCH
 EDVEALAAIYEEKEAWYREESDSLQDLRRLRQELLKTEALKRQAQEEAKGALLGTSGLKRRFSRLENRY
 EALAKQVASEMRFVQDLVRALEQEKLQGVCEGLR

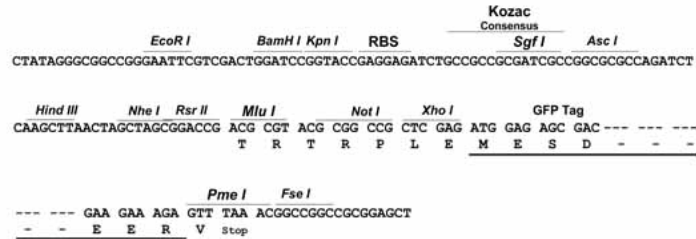
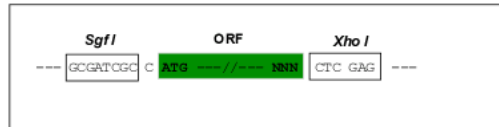
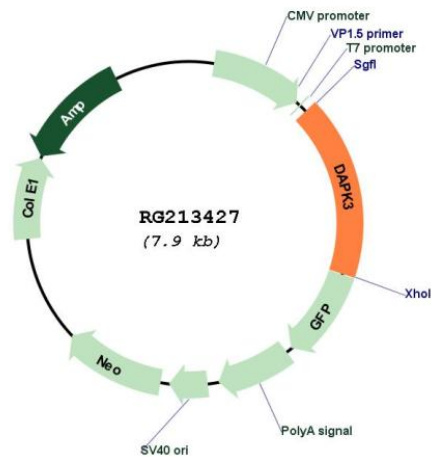
LE - GFP Tag - V

Restriction Sites:

SgfI-XhoI

Cloning Scheme:

Cloning sites used for ORF Shuttling:


Plasmid Map:

ACCN: NM_001348

ORF Size: 1362 bp

OTI Disclaimer: The molecular sequence of this clone aligns with the gene accession number as a point of reference only. However, individual transcript sequences of the same gene can differ through naturally occurring variations (e.g. polymorphisms), each with its own valid existence. This clone is substantially in agreement with the reference, but a complete review of all prevailing variants is recommended prior to use. [More info](#)
OTI Annotation: This clone was engineered to express the complete ORF with an expression tag. Expression varies depending on the nature of the gene.

| | |
|-------------------------------|---|
| Components: | The ORF clone is ion-exchange column purified and shipped in a 2D barcoded Matrix tube containing 10ug of transfection-ready, dried plasmid DNA (reconstitute with 100 ul of water). |
| Reconstitution Method: | <ol style="list-style-type: none">1. Centrifuge at 5,000xg for 5min.2. Carefully open the tube and add 100ul of sterile water to dissolve the DNA.3. Close the tube and incubate for 10 minutes at room temperature.4. Briefly vortex the tube and then do a quick spin (less than 5000xg) to concentrate the liquid at the bottom.5. Store the suspended plasmid at -20°C. The DNA is stable for at least one year from date of shipping when stored at -20°C. |
| RefSeq: | <u>NM_001348.3</u> |
| RefSeq Size: | 2105 bp |
| RefSeq ORF: | 1365 bp |
| Locus ID: | 1613 |
| UniProt ID: | <u>O43293</u> |
| Cytogenetics: | 19p13.3 |
| Domains: | pkinase, TyrKc, S_TKc |
| Protein Families: | Druggable Genome, Protein Kinase |
| Protein Pathways: | Bladder cancer, Pathways in cancer |
| Gene Summary: | Death-associated protein kinase 3 (DAPK3) induces morphological changes in apoptosis when overexpressed in mammalian cells. These results suggest that DAPK3 may play a role in the induction of apoptosis. [provided by RefSeq, Jul 2008] |