

Product datasheet for **RG213417**

CD56 (NCAM1) (NM_001076682) Human Tagged ORF Clone

Product data:

Product Type:	Expression Plasmids
Product Name:	CD56 (NCAM1) (NM_001076682) Human Tagged ORF Clone
Tag:	TurboGFP
Symbol:	NCAM1
Synonyms:	CD56; MSK39; NCAM
Mammalian Cell Selection:	Neomycin
Vector:	pCMV6-AC-GFP (PS100010)
E. coli Selection:	Ampicillin (100 ug/mL)



[View online »](#)

ORF Nucleotide Sequence:

>RG213417 representing NM_001076682
 Red=Cloning site Blue=ORF Green=Tags(s)

TTTTGTAATACGACTCACTATAGGGCGGCCGGAATTCGTCGACTGGATCCGGTACCGAGGAGATCTGCC
 GCC**CGGATCGCC**

ATGCTGCAAACAAAGGATCTCATCTGGACTTTGTTTTCTCTGGAACTGCAGTTTCTCTGCAGTGGATA
 TTGTTCCAGCCAGGGGAGATCAGCGTTGGAGAGTCCAAATTCTTATGCCAAGTGGCAGGAGATGC
 CAAAGATAAAGACATCTCCTGGTTCTCCCCAATGGAGAAAAGCTCACCCCAAACAGCAGCGGATCTCA
 GTGGTGTGGAATGATGATTCTCCTCCACCCTCACCATCTATAACGCCAACATCGACGACCCGGCATT
 ACAAGTGTGTGGTTACAGGCGAGGATGGCAGTGAGTCAAGGCCACCGTCAACGTGAAGATCTTTCAGAA
 GCTCATGTTCAAGAATGCGCCAACCCACAGGAGTTCGGGAGGGGGAAGATGCCGTGATTGTGTGTGAT
 GTGGTCAGCTCCCTCCCAACCATCATCTGAAACACAAGGCCGAGATGTCATCTGAAAAAAGATG
 TCCGATTCATAGTCTGTCCAACAACACTGCAGATCCGGGGCATCAAGAAAACAGATGAGGGCCTTA
 TCGCTGTGAGGGCAGAATCCTGGCAGGGGGGAGATCAACTTCAAGGACATTCAGGTGATTGTGAATGTG
 CCACCTACCATCCAGGCCAGGCAGAATATTGTGAATGCCACCGCAACCTCGGCCAGTCCGTACCCCTGG
 TGTGCGATGCCGAAGGCTTCCCAGAGCCACCATGAGCTGGACAAGGATGGGGAACAGATAGAGCAAGA
 GGAAGACGATGAGAAGTACATCTTCAGCGACGATAGTTCCAGCTGACCATCAAAAAGGTGGATAAGAAC
 GACGAGGCTGAGTACATCTGCATTGCTGAGAACAAGGCTGGCAGCAGGATGCGACCATCCACCTCAAAG
 TCTTTGCAAAACCAAAATCACATATGTAGAGAACCAGACTGCCATGGAATTAGAGGAGCAGGTCACTCT
 TACCTGTGAAGCCTCCGGAGACCCATTCCCTCCATCACCTGGAGGACTTCTACCCGGAACATCAGCAGC
 GAAGAAAAGACTCTGGATGGGCACATGGTGGTGCAGTCCATGCCGTGTGTGCTGCTGACCCCTGAAGA
 GCATCCAGTACACTGATGCCGGAGAGTACATCTGCACCGCCAGCAACCATCGGCCAGGACTCCAGTC
 CATGTACCTTGAAGTGAATATGCCCAAAGCTACAGGGCCCTGTGGCTGTGTACTACTTGGGAGGGGAAC
 CAGGTGAACATCACCTGCGAGGATTTTGCCTATCCCAGTGCCACGATCTCATGGTTTCGGGATGGCCAGC
 TGCTGCCAAGCTCCAATTACAGCAATATCAAGATCTACAACACCCCTCTGCCAGCTATCTGGAGGTGAC
 CCCAGACTCTGAGAATGATTTTGGGAACTACAACGTACTGCAGTGAACCGCATTGGGCAGGAGTCTTG
 GAATTCATCCTTGTCAAGCAGACACCCCTCTCACCATCCATCGACCAGGTGGAGCCATACTCCAGCA
 CAGCCCAGGTGCAGTTTGTGAAGAAAGTATGGCATTCCAAGTGGTATGATGCCAAGGAAGCCAGCATGGAGGGCATC
 GACCATCGTGGCCTGAAGCCGAAACAACGTACGCCGTAAGGCTGGCGGCGCTCAATGGCAAAGGGC
 TGGGTGAGATCAGCGCGCCTCCGAGTTCAAGACGACAGCCAGTCCATAGCCCTCCTCCACCGGCATCTGC
 TAGCTCGTCTACCCCTGTTCCATTGTCTCCACCAGATACAACCTGGCCTCTTCTGCCCTTGCAACCACA
 GAACCAGCTAAAGGGGAACCCAGTGCACCTAAGCTCGAAGGGCAGATGGGAGAGGATGAAAACCTATTA
 AAGTGAACCTGATCAAGCAGGATGACGGCGGCTCCCCATCAGACACTATCTGGTCAGGTACCGAGCGCT
 CTCCTCCGAGTGGAAACCAGAGATCAGGCTCCCGTCTGGCAGTGACCACGTATGCTGAAGTCCCTGGAC
 TGGAAATGCTGAGTATGAGGTCTACGTGGTGGCTGAGAACCAGCAAGGAAAATCCAAGGCGGCTCATTTTG
 TGTTCCAGGACCTCGCCCCAGCCACAGCCATCCCAGCAACCTTGGGAGGCAATTTGTCATCTACACCTT
 TGCTCATTGCTTTTCTCTGCAGTGACTTCTTTTGTCTGT

ACGCGTACGCGGCCGCTCGAG - GFP Tag - GTTTAA

Protein Sequence: >RG213417 representing NM_001076682
 Red=Cloning site Green=Tags(s)

```

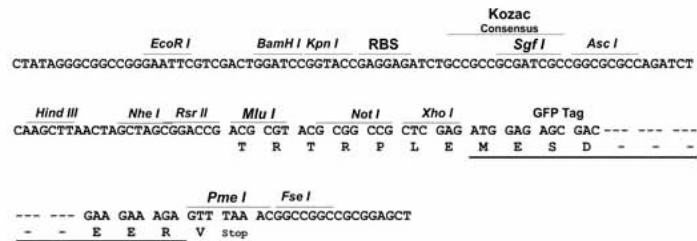
MLQTKDLIWTLFFLGTAVSLQVDIVPSQGEISVGESKFFLCQVAGDAKDKDISWFSPNGEKLTPNQQRIS
VWVNDSSSTLTIYNANIDDAGIYKCVVTGEDGSESEATVNVKIFQKLMFKNAPTQEFREGEDAVIVCD
VVSSLPPTIIWKHKGRDVLKLDVRFIVLSNNYLQIRGIKKTDEGTYRCEGRILARGEINFKDIQVIVNV
PPTIQRQNIIVNATANLGQSVTLVCD AEGFPEPTMSWTKDGEQIEQEEDDEKYIFSDSSQLTIKKV DKN
DEAEYICIAENKAGEQDATIHLKVFAPKPKITYVENQTAMELEEQVTLTCEASGDPIPSITWRTSTRNISS
EEKTLDGHMVVRSHARVSSLTLKSIQYTDAGEYICTASNTIGQDSQSMYLEVQYAPKLQGPVAVYTWEGN
QVNITCEVFAYPSATISWFRDGLLPSSNYSNIKIYNTPSASYLEVTPDSENDGNYNCTAVNRIGQESL
EFILVQADTPSSPSIDQVEPYSSAQVQFDEPEATGGVPIPKYKAEWRVAVGEEVWHKSWYDAKEASMEGI
VTIVGLKPETTYAVRLAALNGKGLGEISAASEFKTQPVHSPPPASASSSTPVPLSPPDTPWPLPALATT
EPAKGEPKAPKLEGMGEDGNSIKVNLIKQDDGGSPIRHYLVRYRALSSEWKPEIRLPSGSDHVMLKSLD
WNAEYEVVVAENQQGSKAAHFVFR TSAQPTAIPATLGGNSASYTFVSL LFSAVTLLLLC
  
```

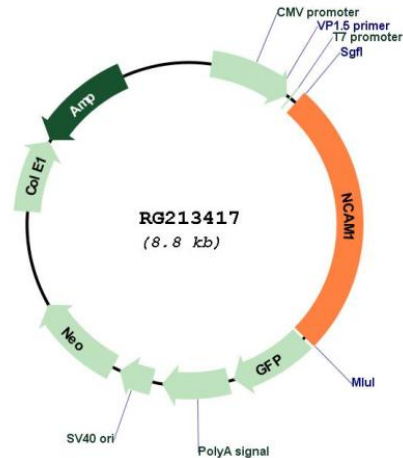
TRTRPLE - GFP Tag - V

Restriction Sites: SgfI-MluI

Cloning Scheme:

Cloning sites used for ORF Shutting:



Plasmid Map:


ACCN: NM_001076682

ORF Size: 2283 bp

OTI Disclaimer: The molecular sequence of this clone aligns with the gene accession number as a point of reference only. However, individual transcript sequences of the same gene can differ through naturally occurring variations (e.g. polymorphisms), each with its own valid existence. This clone is substantially in agreement with the reference, but a complete review of all prevailing variants is recommended prior to use. [More info](#)

OTI Annotation: This clone was engineered to express the complete ORF with an expression tag. Expression varies depending on the nature of the gene.

Components: The ORF clone is ion-exchange column purified and shipped in a 2D barcoded Matrix tube containing 10ug of transfection-ready, dried plasmid DNA (reconstitute with 100 ul of water).

Reconstitution Method:

1. Centrifuge at 5,000xg for 5min.
2. Carefully open the tube and add 100ul of sterile water to dissolve the DNA.
3. Close the tube and incubate for 10 minutes at room temperature.
4. Briefly vortex the tube and then do a quick spin (less than 5000xg) to concentrate the liquid at the bottom.
5. Store the suspended plasmid at -20°C. The DNA is stable for at least one year from date of shipping when stored at -20°C.

RefSeq: [NM_001076682.4](#)

RefSeq Size: 4944 bp

RefSeq ORF: 2286 bp

Locus ID: 4684

UniProt ID:	P13591
Cytogenetics:	11q23.2
Protein Families:	Druggable Genome, ES Cell Differentiation/IPS, Transmembrane
Protein Pathways:	Cell adhesion molecules (CAMs), Prion diseases
Gene Summary:	<p>This gene encodes a cell adhesion protein which is a member of the immunoglobulin superfamily. The encoded protein is involved in cell-to-cell interactions as well as cell-matrix interactions during development and differentiation. The encoded protein plays a role in the development of the nervous system by regulating neurogenesis, neurite outgrowth, and cell migration. This protein is also involved in the expansion of T lymphocytes, B lymphocytes and natural killer (NK) cells which play an important role in immune surveillance. This protein plays a role in signal transduction by interacting with fibroblast growth factor receptors, N-cadherin and other components of the extracellular matrix and by triggering signalling cascades involving FYN-focal adhesion kinase (FAK), mitogen-activated protein kinase (MAPK), and phosphatidylinositol 3-kinase (PI3K). One prominent isoform of this gene, cell surface molecule CD56, plays a role in several myeloproliferative disorders such as acute myeloid leukemia and differential expression of this gene is associated with differential disease progression. For example, increased expression of CD56 is correlated with lower survival in acute myeloid leukemia patients whereas increased severity of COVID-19 is correlated with decreased abundance of CD56-expressing NK cells in peripheral blood. Alternative splicing results in multiple transcript variants encoding distinct protein isoforms. [provided by RefSeq, Aug 2020]</p>