

## Product datasheet for **RG213403**

### HMGN3 (NM\_004242) Human Tagged ORF Clone

#### Product data:

**Product Type:** Expression Plasmids  
**Product Name:** HMGN3 (NM\_004242) Human Tagged ORF Clone  
**Tag:** TurboGFP  
**Symbol:** HMGN3  
**Synonyms:** PNAS-24; PNAS-25; TRIP7  
**Mammalian Cell Selection:** Neomycin  
**Vector:** pCMV6-AC-GFP (PS100010)  
**E. coli Selection:** Ampicillin (100 ug/mL)  
**ORF Nucleotide Sequence:** >RG213403 representing NM\_004242  
Red=Cloning site Blue=ORF Green=Tags(s)

TTTTGTAATACGACTCACTATAGGGCGGCCGGAATTCGTCGACTGGATCCGGTACCGAGGAGATCTGCC  
GCC**CGATCGCC**

ATGCCGAAGAGAAAGTCTCCAGAGAATACAGAGGGCAAAGATGGATCCAAAGTAACTAAACAGGAGCCCA  
CAAGACGGTCTGCCAGATTGTCAGCGAAACCTGCTCCACCAAACCTGAACCCAAACCAAGAAAAACATC  
TGCTAAGAAAGAACCTGGAGCAAAGATTAGCAGAGGTGCTAAAGGAAGAAGGAGGAAAAGCAGGAAGCT  
GGAAAGGAAGGTACTGCACCATCTGAAAATGGTAAAACAAAGCTGAAGAGGCACAGAAAACCTGAATCTG  
TAGATAACGAGGGAGAA

**ACGCGT**ACGCGGCCGCTCGAG - GFP Tag - GTTTAA

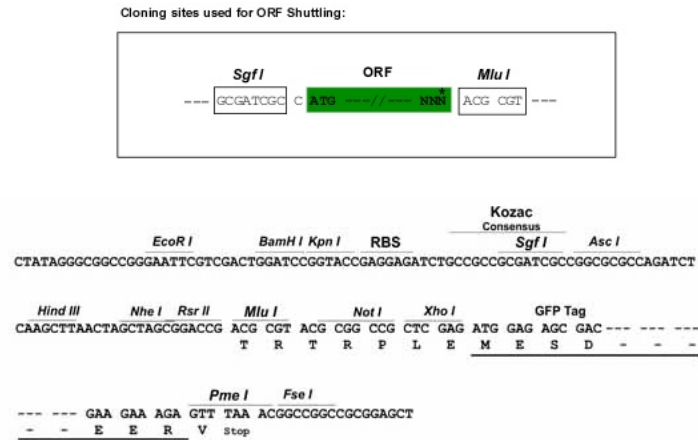
**Protein Sequence:** >RG213403 representing NM\_004242  
Red=Cloning site Green=Tags(s)  
MPKRKSPENTEGKDGSKVTKQEPTRRSARLSAKPAPPKPEPKPRKTSAKKEPGAKISRGAKGKKEEKQEA  
GKEGTAPSENGETKAEEAQKTESVDNEGE

**TRTRPLE** - GFP Tag - V

**Restriction Sites:** Sgfl-MluI



[View online »](#)

**Cloning Scheme:**


**ACCN:** NM\_004242

**ORF Size:** 297 bp

**OTI Disclaimer:** The molecular sequence of this clone aligns with the gene accession number as a point of reference only. However, individual transcript sequences of the same gene can differ through naturally occurring variations (e.g. polymorphisms), each with its own valid existence. This clone is substantially in agreement with the reference, but a complete review of all prevailing variants is recommended prior to use. [More info](#)

**OTI Annotation:** This clone was engineered to express the complete ORF with an expression tag. Expression varies depending on the nature of the gene.

**Components:** The ORF clone is ion-exchange column purified and shipped in a 2D barcoded Matrix tube containing 10ug of transfection-ready, dried plasmid DNA (reconstitute with 100 ul of water).

**Reconstitution Method:**

1. Centrifuge at 5,000xg for 5min.
2. Carefully open the tube and add 100ul of sterile water to dissolve the DNA.
3. Close the tube and incubate for 10 minutes at room temperature.
4. Briefly vortex the tube and then do a quick spin (less than 5000xg) to concentrate the liquid at the bottom.
5. Store the suspended plasmid at -20°C. The DNA is stable for at least one year from date of shipping when stored at -20°C.

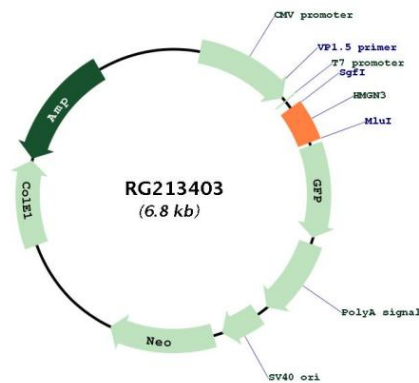
**RefSeq:** [NM\\_004242.4](#)

**RefSeq Size:** 935 bp

**RefSeq ORF:** 300 bp

**Locus ID:** 9324  
**UniProt ID:** [Q15651](#)  
**Cytogenetics:** 6q14.1  
**Domains:** HMG14\_17  
**Protein Families:** Druggable Genome  
**Gene Summary:** The protein encoded by this gene binds thyroid hormone receptor beta in the presence of thyroid hormone. The encoded protein, a member of the HMGN protein family, is thought to reduce the compactness of the chromatin fiber in nucleosomes, thereby enhancing transcription from chromatin templates. Alternatively spliced transcript variants encoding different isoforms have been found for this gene. There is a related pseudogene on chromosome 1. [provided by RefSeq, Jan 2016]

**Product images:**



Circular map for RG213403