

## Product datasheet for **RG213360**

### AKIRIN1 (NM\_024595) Human Tagged ORF Clone

#### Product data:

**Product Type:** Expression Plasmids  
**Product Name:** AKIRIN1 (NM\_024595) Human Tagged ORF Clone  
**Tag:** TurboGFP  
**Symbol:** AKIRIN1  
**Synonyms:** C1orf108; STRF2  
**Mammalian Cell Selection:** Neomycin  
**Vector:** pCMV6-AC-GFP (PS100010)  
**E. coli Selection:** Ampicillin (100 ug/mL)  
**ORF Nucleotide Sequence:** >RG213360 representing NM\_024595  
 Red=Cloning site Blue=ORF Green=Tags(s)

TTTTGTAATACGACTCACTATAGGGCGGCCGGAATTCGTCGACTGGATCCGGTACCGAGGAGATCTGCC  
 GCC**CGATCGCC**

ATGGCGTGCAGGGCGACGCTGAAGCGGCCCATGGAGTTCGAGGCGGCGCTGCTGAGCCCCGGCTCCCCGA  
 AGCGGGCGGCTGCGCCCTCTGCCCGGCCCACTCCGGGCTCAGGCCCGGACGCCAGCCGCGCC  
 GCCGTTTCAGACGACACCCACCGCAGAGTCTGCAGCAGCCCGCCCGCCGCGCAGCGAGCGCGCCTT  
 CCAACTCCGAGCAAATTTTTCAGAACATAAAACAAGAATATAGTCGTTATCAGAGGTGGAGACATTTAG  
 AAGTTGTTCTTAATCAGAGTGAAGCTTGTGCTTCGGAAAGTCAACCTCACTCCTCAGCACTCACAGCACC  
 TAGCTCTCCAGGTTCTCATGGATGAAGAAGGACCAGCCACATTTACCTCCGACAAGTTGGCATAATA  
 TGTGAGCGCCTCTAAAAGACTATGAAGATAAAATTCGGGAGGAGTATGAGCAAATCCTCAATACCAAAC  
 TAGCAGAAACAATGAATCTTTTGTGAAATTCACACATGATCAGATTATGCGACGGTATGGGACAAGGCC  
 AACAAGCTATGTGTC

**ACGCGTACGCGGCCGCTCGAG** - GFP Tag - GTTTAA

**Protein Sequence:** >RG213360 representing NM\_024595  
 Red=Cloning site Green=Tags(s)

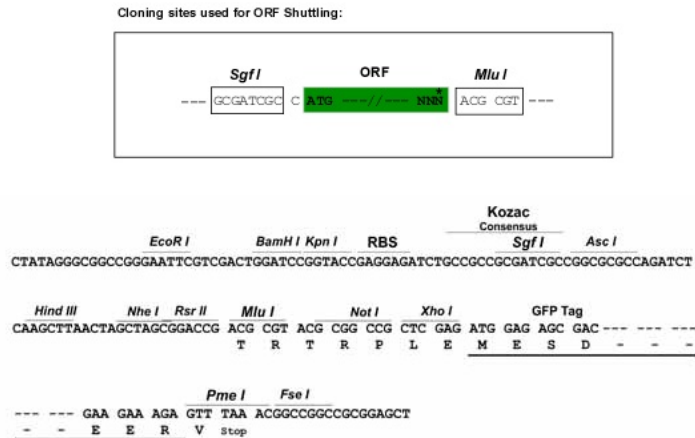
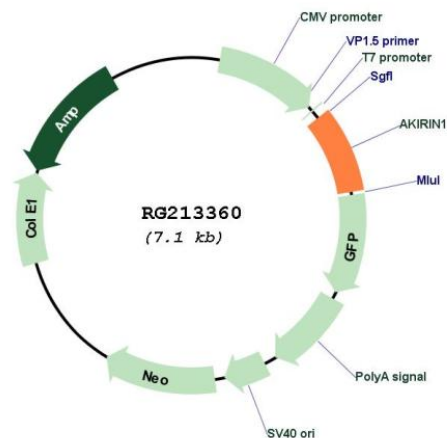
MACGATLKRMEFEAALLSPGSPKRRRCAPLPGPTPLRPPDAEPPPPFQTQTPPQSLQQPAPPGSERRL  
 PTPEQIFQNIKQEYSRYQRWRHLEVLLNQSEACASESQPHSSAL TAPSSPGSSWMKKDQPTFTLRQVGII  
 CERLLKDYEDKIREEYEQILNTKLAEQYESFVKFTHDQIMRRYGRTRPTSYSVS

**TRTRPLE** - GFP Tag - V

**Restriction Sites:** Sgfl-MluI



[View online »](#)

**Cloning Scheme:**

**Plasmid Map:**


ACCN: NM\_024595

ORF Size: 576 bp

OTI Disclaimer: The molecular sequence of this clone aligns with the gene accession number as a point of reference only. However, individual transcript sequences of the same gene can differ through naturally occurring variations (e.g. polymorphisms), each with its own valid existence. This clone is substantially in agreement with the reference, but a complete review of all prevailing variants is recommended prior to use. [More info](#)

OTI Annotation: This clone was engineered to express the complete ORF with an expression tag. Expression varies depending on the nature of the gene.

Components: The ORF clone is ion-exchange column purified and shipped in a 2D barcoded Matrix tube containing 10ug of transfection-ready, dried plasmid DNA (reconstitute with 100 ul of water).

**Reconstitution Method:**

1. Centrifuge at 5,000xg for 5min.
2. Carefully open the tube and add 100ul of sterile water to dissolve the DNA.
3. Close the tube and incubate for 10 minutes at room temperature.
4. Briefly vortex the tube and then do a quick spin (less than 5000xg) to concentrate the liquid at the bottom.
5. Store the suspended plasmid at -20°C. The DNA is stable for at least one year from date of shipping when stored at -20°C.

**RefSeq:** [NM\\_024595.3](#)

**RefSeq Size:** 1968 bp

**RefSeq ORF:** 579 bp

**Locus ID:** 79647

**UniProt ID:** [Q9H9L7](#)

**Cytogenetics:** 1p34.3

**Gene Summary:** Functions as signal transducer for MSTN during skeletal muscle regeneration and myogenesis. May regulates chemotaxis of both macrophages and myoblasts by reorganising actin cytoskeleton, leading to more efficient lamellipodia formation via a PI3 kinase dependent pathway.[UniProtKB/Swiss-Prot Function]