

Product datasheet for **RG213352**

HEATR7A (MROH1) (NM_001099281) Human Tagged ORF Clone

Product data:

Product Type: Expression Plasmids
Product Name: HEATR7A (MROH1) (NM_001099281) Human Tagged ORF Clone
Tag: TurboGFP
Symbol: MROH1
Synonyms: HEATR7A
Mammalian Cell Selection: Neomycin
Vector: pCMV6-AC-GFP (PS100010)
E. coli Selection: Ampicillin (100 ug/mL)
ORF Nucleotide Sequence: >RG213352 representing NM_001099281
Red=Cloning site Blue=ORF Green=Tags(s)

TTTTGTAATACGACTCACTATAGGGCGGCCGGAATTCGTCGACTGGATCCGGTACCGAGGAGATCTGCC
GCC**CGATCGCC**

ATGACTGAGTCCTCCATGAAGAAGCTGGCTCCACCCTGCTGGACGCCATCACCGATAAGGACCCCTGG
TGCAGGAGCAGGTCTGCAGTGCCTGTGCTCCCTCGGGGAGGTGCGGCCGGTGGAGACGCTCCGTGCCTG
CGAGGAGTATCTGCGGCAGCATGACAAGCTGGCACACCCATACCGAGCAGCGGTCTGAGGGCCATGGAG
AGGGTCTGAGCAGTCGCGCCAGTGAGCTGGACAAGGACACAGCCAGCACCATCATCTCTGGCCCTCA
GCGAGATGACCAAGACGAAGGACCTGGTCTGGGACTGGCAGCAGGCGGCGAGTGGCGTCTGGTGGCCGT
GGGAAGACAGTTCATCAGCAAGGTGATGGAGGAGCTGCTGCGCAGGCTGCACCCTGGGACCCTGCCACAC
TGCGCCGTGCTGCACACCCTCGCCAGCCTCTCGGTGGCCAACGCGTTCGGCGTAGTCCCCTTCTGCCAT
CCGTCTGAGCTCCCTGCTGCCCGTGTGGGCGTGGCCAAGCAGGACACGGTGGCGTGGCCTTCTGCTC
CGCTCTGCAGCGCTTTCAGCGAGGGTGCCTGGAGTACCTAGCCAACCTGGACCGAGCCCCAGACCCACG
GTCAGGAAGGACGCCTTTGCCACCGACATCTTCAGCGCTACGATGTTCTTCCATCAGTGGCTGCAGA
GTCGAGAAGCCAAGCTCCGTCTTGCCGTGGTGGAGGCTCTGGGCGCTATGAGCCATCTGCTGCCAGTGA
GAGGCTGGAAGAGCAGCTGCCAAGCTCCTCCCTGGGATTCTCGCCCTCTACAAGAAGCACGCAGAGACC
TTCTACTTGTCCAAGAGCCTGGCCAGATCCTCGAGGCAGCTGTGAGTGTGGGCGCCACACTGGAGA
CCAGCTGGATGCCCTCTTGCTGCACTGCACTCCAGATCTGTGTGCCTGTGGAGTCTCAAGCCCTCT
GGTGTGATGAGTAACCAGAAGGAGGTGCTGCGCTGCTTCACTGTGCTGGCCTGCAGCTCGCCTGACCGCCTA
CTGGCCTTCTGCTGCCAGGCTGGACACCAGCAATGAGAGGACCCGCGTGGGACCCCTGCAGGTGGTCA
GACATGTCATCAACTCAGCTGGCAGCACTAACACCAGAATAAACTGATGTTGCCATCAGCAGTCACACG
ACTGAAACATGAGGACTGCCCTGCACGTGCTGCTCCGAGCCTGCTGATCTAACGGCCGCGCCCGCTCT
GTTGCT

AGCGGACCGACGCGTACGCGGCCGCTCGAG - GFP Tag - GTTTAA



[View online »](#)

Protein Sequence: >RG213352 representing NM_001099281
 Red=Cloning site Green=Tags(s)

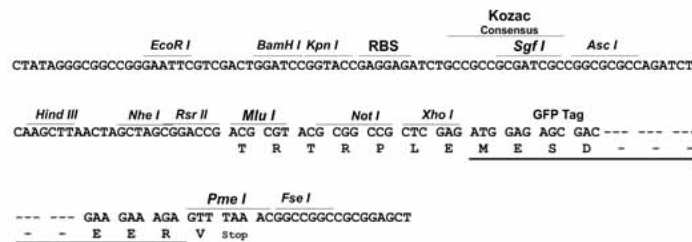
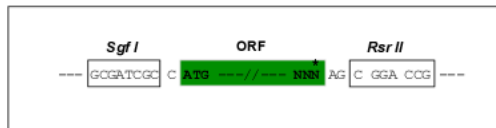
MTESMKKLASTLLDAITDKDPLVQEQVCSALCSLGEVRPVETLRACEEYLRQHDKLAHPYRAAVLRAME
 RVLSSRASELDKDTASTIILLASSEMTKTKDLVWDWQQAASGVLVAVGRQFISKVMEELLRRLHPGTLPH
 CAVLHTLASLSVANAFGVVFPFLPSVLSLLPVLGVAKQDTRVAFCSALQRFSEGALEYLANLDRAPDPT
 VRKDAFATDIFSAVDLHFQWLQSREAKRLAVVEALGPMShLLPserLEEQLPKLLPGILALYKKHAET
 FYLSKSLGQILEAAVSVGSRLETQLDALLAALHSQICVPVESSSPLVMSNQKEVLRcFTVLACSSPDRl
 LAFLlPRLDTSNERTRVgTLQVVRHVINSAGSTNTRITLMLPSAVTRlKHEDCPARAAPQPADLTAAPAS
 VA

SGPTRRRLE - GFP Tag - V

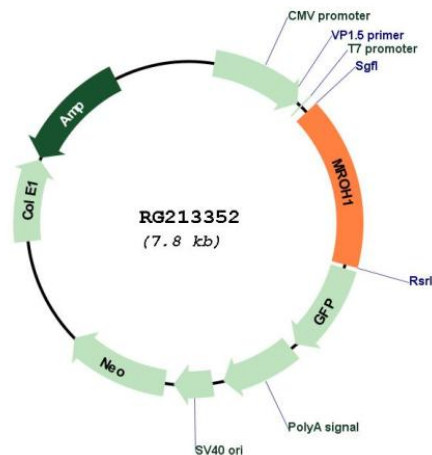
Restriction Sites: SgfI-RsrII

Cloning Scheme:

Cloning sites used for ORF Shuttling:



Plasmid Map:



ACCN: NM_001099281

ORF Size:	1266 bp
OTI Disclaimer:	The molecular sequence of this clone aligns with the gene accession number as a point of reference only. However, individual transcript sequences of the same gene can differ through naturally occurring variations (e.g. polymorphisms), each with its own valid existence. This clone is substantially in agreement with the reference, but a complete review of all prevailing variants is recommended prior to use. More info
OTI Annotation:	This clone was engineered to express the complete ORF with an expression tag. Expression varies depending on the nature of the gene.
Components:	The ORF clone is ion-exchange column purified and shipped in a 2D barcoded Matrix tube containing 10ug of transfection-ready, dried plasmid DNA (reconstitute with 100 ul of water).
Reconstitution Method:	<ol style="list-style-type: none">1. Centrifuge at 5,000xg for 5min.2. Carefully open the tube and add 100ul of sterile water to dissolve the DNA.3. Close the tube and incubate for 10 minutes at room temperature.4. Briefly vortex the tube and then do a quick spin (less than 5000xg) to concentrate the liquid at the bottom.5. Store the suspended plasmid at -20°C. The DNA is stable for at least one year from date of shipping when stored at -20°C.
RefSeq:	NM_001099281.2 , NP_001092751.1
RefSeq Size:	1744 bp
RefSeq ORF:	1269 bp
Locus ID:	727957
UniProt ID:	Q8NDA8
Cytogenetics:	8q24.3
Protein Families:	Druggable Genome