

## Product datasheet for **RG213334**

### **DATF1 (DIDO1) (NM\_033081) Human Tagged ORF Clone**

#### Product data:

Product Type:	Expression Plasmids
Product Name:	DATF1 (DIDO1) (NM_033081) Human Tagged ORF Clone
Tag:	TurboGFP
Symbol:	DIDO1
Synonyms:	BYE1; C20orf158; DATF-1; DATF1; DIDO2; DIDO3; DIO-1; DIO1; dj885L7.8
Mammalian Cell Selection:	Neomycin
Vector:	pCMV6-AC-GFP (PS100010)
E. coli Selection:	Ampicillin (100 ug/mL)
ORF Nucleotide Sequence:	>RG213334 representing NM_033081 Red=Cloning site Blue=ORF Green=Tags(s)

TTTTGTAATACGACTCACTATAGGGCGGCCGGAATTCGTCGACTGGATCCGGTACCGAGGAGATCTGCC  
GCC**CGATCGCC**

ATGGACGACAAAGGGCAGCCGAGCAATGAGGAGGCACCTAAGGCCATCAAACCCACCAGCAAAGAGTTCA  
GGAAAACATGGGGTTTTCGAAGGACCCTATCGCCAAGCGAGAGGGCGCAGGGGACGCGGAGGCTGACCC  
ACTGGAGCCGCCACCCACAGCAGCAGCTGGCCTGTCCCTGCGGCGCAGTGGGAGGCAGCCAAAGCGC  
ACTGAGCGCGTGGAGCAGTTCCTGACCATTGCGCGGCCCGCGGCAGGAGGAGCATGCCTGTCTCCCTGG  
AGGATTCTGGTGAGCCACGTCTCGCCCGCCACAGACGCGGAGACAGCCTCCGAGGGCAGCGTGGAAAG  
CGCTTCTGAGACCAGAAGCGGCCCCAGTCTGCTTCCACAGCTGTGAAGGAACGACCAGCCTCTTCTGAA  
AAGGTGAAAGGAGGGGATGACCACGATGACACCTCCGATAGTGACAGCGATGGCCTGACCTTGAAGAGC  
TTCAGAATCGCCTTCGCAGGAAGCGGGAACAGGAGCCCACTGAGAGGCCCTGAAAGGGATCCAGAGTCG  
CCTGCGGAAGAAGCGCCGGGAGGAGGGTCCCGCCGAGACTGTGGGCTCCGAGGCCAGTGACACTGTGGAG  
GGCGTCTGCCAGTAAGCAGGAGCCCGAGAACGATCAGGGGGTTGTGTCCAGGCTGGGAAAGATGACA  
GAGAGAGTAAGTTGGAGGGAAAGCGGCTCAGGACATCAAAGATGAGGAGCCTGGAGACTTGGGCCGACC  
GAAGCCTGAATGTGAGGGTTACGACCCCAACGCCCTGTATTGCATTTGCCGCCAGCCTCACAAACAACAGG  
TTTATGATTTGCTGTGACCGCTGTGAAGAATGGTTTCATGGCGATTGTGTGGCATTCTGAGGCTCGAG  
GGAGGCTTTTGGAAAGGAATGGGGAAGACTATATCTGCCAAACTGCACCATTCTGCAAGTGCAGGATGA  
GACTCATTGAGAAACGGCAGATCAGCAGGAAGCTAAATGGAGACCTGGAGATGCTGATGGCACCGATTGT  
ACAAGTATAGGAACAATAGAGCAGAAGTCTAGCGAAGACCAAGGGATAAAGGGTGAAGTTGAGAAAGCTG  
CAAATCCAAGTGGCAAGAAGAACTCAAGATCTCCAGCCTGTGATAGAGGCGCCTGGTGCCTCAAATG  
TATTGGCCCCGGGTGCTGTACGTGGCGCAGCCGACTCGGTGTACTGCAGTAATGACTGTATCCTCAA  
CACGCCGAGCGACAATGAAGTTTCTAAGCTCAGGTAAGAACAGAAAGCCAAAGCCTAAAGAAAAGATGA  
AGATGAAGCCAGAGAAGCCAGTCTTCCGAAATGCGGTGCTCAGGCAGGTATTAATCTCTTCTGTGCA  
CAAGAGACCAGCTCCAGAAAAAAGAGACCACAGTGAAGAAGGCAGTGGTGGTCCCTGCGCGGAGTGAA



[View online >](#)

GCACTCGGGAAGGAAGCAGCTTGTGAGAGCAGCACGCCGTCGTGGGCGAGCGATCACAATTACAATGCAG  
 TAAAGCCAGAAAAGACTGCTGCTCCCTCGCCGTCAGTGTGTATAAATCCACGAAGGAAGACAGGAGGTC  
 CGAGGAGAAAAGCGGCAGCCATGGCAGCCTCAAAGAAAACAGCCCTCCAGGCTCCGCGGTGGGCAAGCAG  
 CCTGCACCTAGAAACCTCGTGCCAAAGAAGTCTTCTTTTGCTAATGTGGCAGCAGCCACACCAGCCATTA  
 AAAAGCCACCCTCAGGTTTCAAGGGCACCATCCCCAAGAGGCCATGGCTCTCCGTAACCCATCGAGTGG  
 TGCTTCAGCTGCCAGGCAGGCCGACCCGACCTGCAGCGGCAACGGCTGCCTCCAAGAAGATTCCTGGC  
 TCCGCTGCTTTGGTGGGAGCCGTAAAGAAAGCCAGTGGTACCTTCTGTTCCAATGGCTCGCCAGCCCCAG  
 GACGCCCTTGGGGCTATGAGTGTGCACCATCGCAGCCAAATTCACAAATTCGGCAAAATATCAGACGCTC  
 CTTAAAAGAGATTTTGTGAAAAGAGTCAATGACAGCGATGACTTAATCATGACAGAAAACGAAGTAGGA  
 AAAATTGCCCTCCATATTGAGAAGGAGATGTTAACTGTTTCAAGTTACAGATAATCGCTACAAGAGTA  
 AATATCGCAGCATCATGTTCAACCTGAAGGACCCTAAAAATCAGGGACTTTCATCGTGTCTGCGTGA  
 GGAAATCTCTTTGGCGAAACTTGTGAGACTGAAGCCAGAAGAACTTGATCTAAAGAGCTTTCACGTGG  
 AAAGAGAGGCCAGCGAGATCTGTGATGGAGTCCAGAACTAAACTGCACAATGAAAGCAAGAAGACGGCCC  
 CCAGGCAGGAGGCCATCCCCGATCTGGAGACTCTCCGCCAGTGTGGATTTCAGAGGAACAGCAAGAGTC  
 AGCAGTGTCTCCCTGAGAAGAGCACAGCGCCGCTTCTCGACGTCTTCAGCAGCATGTTGAAAGACACC  
 ACCAGTACGACCCGCGCACACCTTTCGATCTCAACTGTAAAATTTGCACAGGCCAGGTTCCCTCCGCGAG  
 AAGATGAGCCAGCTCCGAAAAACAATAATTTGTCAGTCTCTGTTAAGAAAAGAACTTAAAAATCAAAGCA  
 TGACAGCTCTGCACCTGACCCAGCTCCGGATTACGCTGATGAGGTGATGCCGGAGGCTGTGCCTGAAGTT  
 GCCTCTGAGCCAGGCCTAGAAAAGTCTTCTCATCCAAATGTGGACAGAACGTATTTCCCTGGGCCTCCAG  
 GAGATGGCCATCCCGAGCCCTCCCCGCTGGAAGACCTGTCCCCCTGCCAGCCTCCTGTGGGAGCGGGGT  
 GGTCAACACCGTCACAGTGTCCGGCCGGACCCAGGACCGCTCCAAGCAGTTCATGCACAGCCGTGGCC  
 TCCGCAGCATCCCGCCAGACAGCACCCACATGGTGAAGCCAGACAGGATGTCCGAAGCCTGTCTTGA  
 CTTCTGTGATGGTCCCAAGTCCATACTAGCTAAGCCATCTCATCTCCTGACCCAAAGTACCTGTGAT  
 TCCCTCGTCACCAAAATATCAGCACTTCAGAATCAGGTTCCCTCCAGAGGGAGACAGCACCTCTTTTTG  
 TCTCGACTCAGCACCATTTGAAAAGGATTTATTAACATGCAGAGTGTGGCAAAATTTGCTACTAAGCGT  
 ATCCTGTCTCTGGGTGTTTTGATTACCTCAGTGAAGATTTGCCTGACACAATTCACATTGGTGGGAGGAT  
 CGCACCGAAGACAGTTTGGGATTATGTTGGCAAATCAAGTCTTCTGTGTCTAAGGAGCTGTGTCTGATC  
 CGCTTCCACCCCGCCACAGAGGAAGAGGAGGTGCGCTATATCTCTCTACTCCTATTTCCAGCAGCCGTG  
 GCCGCTTTGGTGTGTAGCTAATAACAACAGGCACGTCAAGGACCTCTACCTGATCCCGTGAAGCGCCA  
 GGACCCTGTTCCATCCAACTCTTGCCCTTTGAGGGACCAGTCTTGAGTACCACGTCCGAATATAATT  
 CTTGGGTTAGTAATCTGCCAAAAATCAAACGTCCCGCAAACAGTGGAGAGTTAGACAAGATGGACGAAA  
 AGCGGACCCGACTTCAACCGGAAGAAGCGGACGTTCCGGCCTATCCAAAAGTAGCCACAGTCCCGCAGTC  
 GGAAAAGAAGCCCTCCAAGTATCCACTCTGCTCTGCAGACCGGGTGTGACGACCCACACCTCCTGGGTG  
 CCGCCGCTCCGCCCCCTTCCAGAACACCGGTGCTAAAAGTGTGTCATCCCTCAAACCTGCAGCCC  
 CCAGCCCAGCCACAGCAGCCACAACAGCAGCGGCAGCCTCCACGGCAGCTTCTCCACCGCTTGTCTGC  
 TTCCAAAACAGCATACCCGCTGGAGCACATCTGCAGACTCTCTTTGAAAAGAAGAAATCATTGACCCG  
 TCCGCCAGAGAGCCTCCCGGTCCACCGCAGGTCTCCCCAGGAGCCAAAACACAGCAGAGGACGGGG  
 TGCCGGCACCTCCGTTGTTAGATCCGATCGTCCAGCAGTTCGGTCAAGTCTCAAAGATAAGGCTCTAGA  
 GGAAGAGGAGGACGACAGGCCATACGACCCTGAGGAGGAGTACGACCCGAGAGGGCCTTCGACACTCAG  
 CTTGTGGAGCGAGGGCGGCCACGAGGTGAAAAGGGCTCCTGAAGCAGCTGCAGCCGAGCGGGAAGAGG  
 TGGCCTATGACCCGAGGATGAGACCATTTAGAAGAAGCGAAAAGTACTGTTGATGACCTGCCAACAG  
 GATGTGTGCCGACGTGAGAAGGAACTCCGTGGAGAGGCCTGCCGAGCCGTTGGCCGGGGCTGCGACGCC  
 TCCCTGGTGGAGCAACAGAAGATGCTAGAAGAGCTGAACAACAGATCGAGGAGCAGAAGAGACAGCTGG  
 AGGAGCAAGAAGAAGCTCTCAGGCAGCAGAGGGCCGCGTCCGGGTCTCCATGGCCACTTCTCGGTGTC  
 GGACGCCCTGATGTCTCCACCACCAAAGTCTGCTTGCCTTGCCTTGCCTTGCCTTGCCTTGCCTTGCCT  
 TCTGCAGACAAGCCGCTCACTGCCCCCGCCAGCCAGGCGTCAAACCACAGGGACCCCGGCAGGCCA  
 GCGCCTGGCCGCTGAGACCGGTGAGGGGGAGGGGGAGCCTCTCTCCAGGCTCTCGGCACGTGGTGGCCA  
 GGGTGGCCTGCCGAGAGAGATGCTTCCAGGGGTGGCCTCGTGGGCCAGGCGCCATGCCAGTCCCGGAG  
 GAAAAAGAGCCAGCTTCCCCCTGGGCTTCCGGCGAAAAGCCCCAGCGGGGTCCGAGCAGGACGGCT  
 GGAAAGGACAGGCTGGGGAGGGCACCCGCCCGCCACGTTGGAGACAGCTCGGCCAGGCTGCCCGGAG  
 GGTGCTGTGCCACACCGCTTGCAGCGCCCTGCAGCCCGGCTTCCCGCTGCAGCACGACGGTGAAGG  
 GACCTTTCACCTGCCCGGGGTTGCGTGCAGGACAAGGCTCTCGGCTCAGCCAGTATGAGGACCCAA

GAAATCTTCATTCTGCTGGAAGGAGCAGCAGCCCTGCAGGTGAAACAGAGGGGGACAGAGGCCACAGGC  
CAGACCCGGCGAGGGCACCGCCCGCTCCCCACCAGGACAGAAAGTGGGGGGCTCTCAGCCCCCGTTT  
CAGGGTCAGCGGGAACCTGGACCTCATGCTTTGGGGATGTCAGGGCTTACGGCCCAATTTCCCGGGAC  
CAAGGGGGCCAGCCCTCCGTTTCCAGAAGAGAATATCGCTTCTAACGATGGGCCACGAGGGCTCCGCC  
AGCCAGATTCGGAGCCAGAAGGGGCCATCCCTTCTTATTCTCGGGCAACATGGGCCACCTCCTTAT  
GGGGACAGCAGAGGCCCTCACCTCTTACCTTGGTGGACCACGAGGAGTGGCACCATCCAATTTGAAG  
AACGCAAGGATCCCATGGGGAGAAGAGGGAGTCCAGGACGCCCGTATAACGAGGTGACGGGGCGCC  
CGCCAGTTTGAAGGGACAGAGCAAGCCCATTTCTGGGAAGCAGAGGGCGCGCCTTTCCAGTTCGGA  
GGCCAGAGAAGGCCACTGCTGTCTCAGCTGAAAGGCCCCGAGGCGGCCCCCTCCCTCTCAGTTTGGAG  
GTCAGAGAGGACCACCCCTGGTCATTTCTGGGCCAAGAGGGCCCATCCTAGTCAGTTTGAAGTGC  
CCGGGGCCCTCATCCAACCAAGTTTGAAGGACCCAGAGGCAAGCGCCTAACTTTATGCCAGGTCCCAGG  
GGCATTACAGCCTCAGCAGTTTGAAGACCAGAGGGTCCATTACCACCAAGATTACAAAACAAAGGGCGC  
CTGCACCCCTGCAGTTTGGTGGACTACGGGGTCCGCACCCTTTCTGAAAAAATGAGCAGACCCCTT  
GCGATTTCACTTCCAGGGCCAGGCCCGCAGGTGATGAAGCCGGGCCCCAGGCCCTGCTGGAGCTTCCC  
AGCCACCCCGCAGCACCGGAAGGACCCTGGGAGGAGCGGGCCGCCCTCCGCGCTCTCCTCCAGTG  
CGCCCGGACAGGGCCCGAGGCCGACGACAGTGGGCATCGGCCGACTTCCGAGAGGGGAAAGGCCACGA  
ATACAGAAACCAGACTTTCGAAGGGAGGCAGAGAGCGGTTTGACGTGGGGCCAAAGAGAAGCCGCTG  
GAGGAGCCCGACGCCAGGGCCGGGCGTCCGAGGACAGGAGGAGAGCGGAGCGGGCCGAAACTGGA  
GCCGAGAGCGGGACTGGGACCGGCCCGGGAGTGGGACCACCGGGACAAGGACTCCAGCCGGGACTG  
GGACAGAAACCGGGAGAGGAGCGCAACCGGACCGAGAGCGGAGGCGGACCGGGGCAAGGAGTGGGAC  
CGCAGCCGGGAGCGGAGCAGGAACCGAGAGCGGAGCGGAGACCGGAGGCGGACCGGGACCGGTCCCGGA  
GCAGAGAGCGGGACCGAGACAAGGCCAGGGACAGGGAGCGGGCCCGGACCGCAAGGACCGGAGCAAGAG  
CAAAGAGAGCGCTCGGGACCCGAAGCCGAGGCCTCGAGGGCCTCCGACGCTGGCACCGCCTCGCAGGCC

ACGCGTACGCGGCCGCTCGAG – GFP Tag – GTTTAA

**Protein Sequence:** >RG213334 representing NM\_033081  
 Red=Cloning site Green=Tags(s)

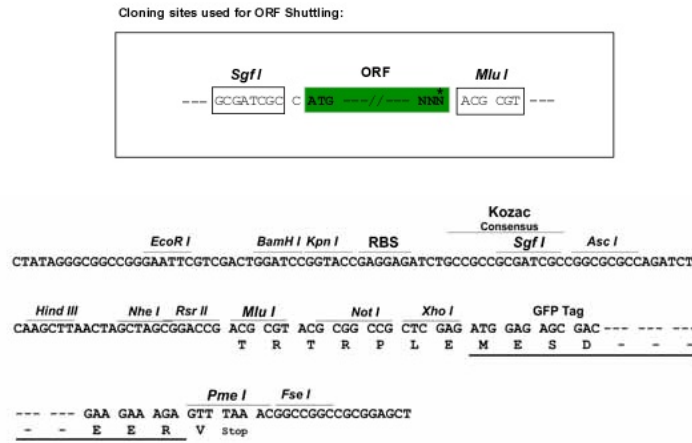
```

MDDKGDPSNEEAPKAIKPTSKEFRKTWGFRRTTIAKREGAGDAEADPLEPPPPQQQLGLSLRRSGRQPKR
TERVEQFLTIARRRRRRSMPVSLSDSGEPTSCPATDAETAEGSVESASETRSGPQSASTAVKERPASSE
KVKGGDDHDDTSDSDSDGLTLKELQNRLRRKREQEPTERPLKGIQSRLRKKRREEGPAETVGSEASDVE
GVLPSKQEPENDQGVVSQAGKDDRESKLEGGKAAQDIKDEEPGDLGRPKECEGYDPNALYCICRQPHNRR
FMICCDRCEEWFHGDCVGISEARGRLLENGEDYICPNCTILQVQDETHSETADQQAQKWRPGDADGTDC
TSIGTIEQKSSDQGIKRIEKAANPSGKKKLIFQPVEIAPGASKCIGPGCCHVAQPDVSYCSNDCILK
HAAATMKFLSSGKEQKPKPKKMKMKPEKPSLPGCAQAGIKISSVHKRPAPEKKETTIVKAVVVPARSE
ALGKEAACESSTPSWADHNYNAVKPEKTAAPSPSLLYKSTKEDRRSEEKAAAMAASKKTAAPGSAVGKQ
PAPRNLVPPKSSFANVAATPAIKKPPSGFKGTIPKRPWLSATPSSGASARQAGPAPAAATAASKKFFG
SAALVGAVRKPVPVSPMASPAPGRLGAMSAAPSQNSQIRQNIIRSLKEILWKRVDSDDLIMTENEVG
KIALHIEKEMFNLFQVTDNRYKSKYRSIMFNLDKPNQGLFHRVLRREEISLAKLVRKPEELVSKELSTW
KERPARSYMESRTKLHNESKKTAPRQEAIPDLEDSPPVSDSEEQQESARAVPEKSTAPLLDVFSSMLKDT
TSQHRHLFDLNCKICTGQVPSAEDEPAPKKQKLSASVKKEDLKSCHDSSAPDPADPSADEVMPEAVPEV
ASEPGLSASHPNVDRTYFPGPPGDGHPEPSPLEDLSPCPASCSSGVVTTVTVSGRDPRTAPSSSCTAVA
SAASRPDSTHMVEARQDVPKPVLTSVMVPKSIKAKPSSSPDPRLSVPPSPNIISTESRSPPEGDTTLFL
SRLSTIWKGFINMQSVAKFVTKAYPVSQCFDYLSEDLPTIHIGGRIAPKTVWDYVVGKLSVSKELCLI
RFHPATEEEEEVAYISLYSYFSSRGRFGVANNRHRVKDLYLIPLSAQDPVPSKLLPFEGPGLESRPNII
LGLVICQKIKRPAANGELDKMDEKTRTLQPEEADVPAYPKVATVPQSEKKPSKYPLCSADAAVSTTPPGS
PPPPPLPEPPVLKVLSSLKPAAPSPATAATTAATAAASSTASSASKTASPLEHILQTLFGKKKSFDP
SAREPPGSTAGLPQEPKTTAEDGVPAPPLLDPIVQQFGQF SKDKALEEEEEDDRPYDPEEYDPERAFDTQ
LVERGRRHEVERAPEAAAAAEREEVAYDPEDETILEEAKVTVDLPLNRMCAVRRNSVERPAEPVAGAATP
SLVEQQKMLEELNKQIEEQKRQLEEQEEALRQRAAVGVSMAHFSVSDALMSPPPKSSLPKAELFQQEQQ
SADKPASLPPASQASNRDPRQARRLAAETGEGEGEPLSRLSARGAQGALPERDASRGGLVGQAPMPVPE
EKEPASSPWASGEKPPAGSEQDQGWKAEPGEGTRPATVGDSSARPARRVLLPTPPCGALQPGFPLQHDGER
DPFTCPGFASQDKALGSAQYEDPRNLHSAGRSSSPAGETEGDREPQARPGEGTAPLPPPGQKVGGSQPPF
QQQREPGPHALGMSGLHGPNFPGPRGPAPPFPEENIASNDGPRGPPPARFQAQKGPISLFSGQHGGPPY
GDSRGPSPSYLGGPRGVAPSQFEERKDPHGKREFQDAPYNEVTGAPAQFEGTEQAPFLGSRGGAPFQFG
GQRRPLLSQLKGRGGPPPSQFQGGQGRGPPGHFVGPRGPHPSQFETARGPHPNQFEGPRGQAPNFMGPR
GIQPQQFEDQRVHSPRFTNQRAPAPLQFGGLRGSAPFSEKNEQTPSRFHFQGGAPQVMKPGPRPILLEP
SHPPQHRKDRWEEAGPPSALSSSAPGQGPEDGQWASADRFREGKGHEYRNQTFEGRQRERFDVGPKEKPL
EEPDAQGRASEDRRRERERGRNWSRERDWRPREWDRHRDKDSSRDWRNRERSANRDREREADRGEWD
RSRERSRNRERERDRRRDRDRSRERDRDKADRERGRDRKDRSKSKESARDPKPEASRASDAGTASQA
  
```

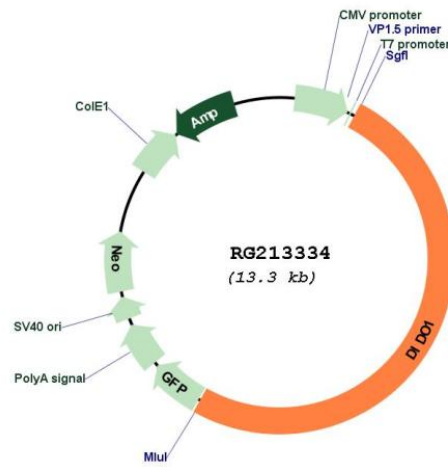
TRTRPLE - GFP Tag - V

**Restriction Sites:** SgfI-MluI

**Cloning Scheme:**



**Plasmid Map:**



ACCN: NM\_033081  
ORF Size: 6720 bp

<b>OTI Disclaimer:</b>	<p>Due to the inherent nature of this plasmid, standard methods to replicate additional amounts of DNA in E. coli are highly likely to result in mutations and/or rearrangements. Therefore, OriGene does not guarantee the capability to replicate this plasmid DNA. Additional amounts of DNA can be purchased from OriGene with batch-specific, full-sequence verification at a reduced cost. Please contact our customer care team at <a href="mailto:custsupport@origene.com">custsupport@origene.com</a> or by calling 301.340.3188 option 3 for pricing and delivery.</p> <p>The molecular sequence of this clone aligns with the gene accession number as a point of reference only. However, individual transcript sequences of the same gene can differ through naturally occurring variations (e.g. polymorphisms), each with its own valid existence. This clone is substantially in agreement with the reference, but a complete review of all prevailing variants is recommended prior to use. <a href="#">More info</a></p>
<b>OTI Annotation:</b>	This clone was engineered to express the complete ORF with an expression tag. Expression varies depending on the nature of the gene.
<b>Components:</b>	The ORF clone is ion-exchange column purified and shipped in a 2D barcoded Matrix tube containing 10ug of transfection-ready, dried plasmid DNA (reconstitute with 100 ul of water).
<b>Reconstitution Method:</b>	<ol style="list-style-type: none"> <li>1. Centrifuge at 5,000xg for 5min.</li> <li>2. Carefully open the tube and add 100ul of sterile water to dissolve the DNA.</li> <li>3. Close the tube and incubate for 10 minutes at room temperature.</li> <li>4. Briefly vortex the tube and then do a quick spin (less than 5000xg) to concentrate the liquid at the bottom.</li> <li>5. Store the suspended plasmid at -20°C. The DNA is stable for at least one year from date of shipping when stored at -20°C.</li> </ol>
<b>RefSeq:</b>	<a href="#">NM_033081.1</a> , <a href="#">NP_149072.1</a>
<b>RefSeq Size:</b>	8562 bp
<b>RefSeq ORF:</b>	6723 bp
<b>Locus ID:</b>	11083
<b>UniProt ID:</b>	<a href="#">Q9BTC0</a>
<b>Cytogenetics:</b>	20q13.33
<b>Protein Families:</b>	Druggable Genome, Transcription Factors
<b>Gene Summary:</b>	<p>Apoptosis, a major form of cell death, is an efficient mechanism for eliminating unwanted cells and is of central importance for development and homeostasis in metazoan animals. In mice, the death inducer-obliterators-1 gene is upregulated by apoptotic signals and encodes a cytoplasmic protein that translocates to the nucleus upon apoptotic signal activation. When overexpressed, the mouse protein induced apoptosis in cell lines growing in vitro. This gene is similar to the mouse gene and therefore is thought to be involved in apoptosis. Alternatively spliced transcripts have been found for this gene, encoding multiple isoforms. [provided by RefSeq, Jul 2008]</p>