

## Product datasheet for **RG213318**

### NY-ESO-1 (CTAG1B) (NM\_001327) Human Tagged ORF Clone

#### Product data:

**Product Type:** Expression Plasmids  
**Product Name:** NY-ESO-1 (CTAG1B) (NM\_001327) Human Tagged ORF Clone  
**Tag:** TurboGFP  
**Symbol:** NY-ESO-1  
**Synonyms:** CT6.1; CTAG; CTAG1; ESO1; LAGE-2; LAGE2B; NY-ESO-1  
**Mammalian Cell Selection:** Neomycin  
**Vector:** pCMV6-AC-GFP (PS100010)  
**E. coli Selection:** Ampicillin (100 ug/mL)  
**ORF Nucleotide Sequence:** >RG213318 representing NM\_001327  
 Red=Cloning site Blue=ORF Green=Tags(s)

TTTTGTAATACGACTCACTATAGGGCGGCCGGAATTCGTCGACTGGATCCGGTACCGAGGAGATCTGCC  
 GCC**CGATCGCC**

ATCGAGGCCAAGGCCGGGGCACAGGGGTTTCGACGGGCGATGCTGATGGCCAGGAGGCCCTGGCATTCTGATGGCCAGGGGCAATGCTGGCGGCCAGGAGAGGGGTGCCACGGCGGCAGAGGTCCCCGGGGCGCAGGGGCAGCAAGGGCCTCGGGCCGGGAGGAGGCCGCCCGGGGTCCGCATGGCGGCGGGCTTCA  
 GGGCTGAATGGATGCTGCAGATCGGGGCCAGGGGCCGAGAGCCGCTGCTTGAGTTCTACCTCGCCATGCCTTTCGCGACACCCATGGAAGCAGAGCTGGCCCGCAGGAGCCTGGCCAGGATGCCACCGCTTCC  
 CGTGCCAGGGGTGCTTCTGAAGGAGTTCAGTGTGCCGCAACATACTGACTATCCGACTGACTGCTGCA  
 GACCACCGCCAAGTGCAGCTCTCCATCAGCTCCTGTCTCCAGCAGCTTCCCTGTTGATGTGGATCACGC  
 AGTGCTTCTGCCGTGTTTTGGCTCAGCCTCCCTCAGGGCAGAGGCGC

**ACGCGT**ACGCGGCCGCTCGAG - GFP Tag - GTTTAA

**Protein Sequence:** >RG213318 representing NM\_001327  
 Red=Cloning site Green=Tags(s)

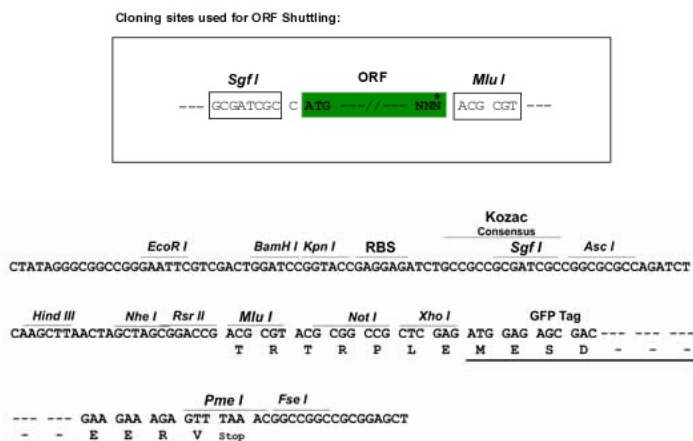
MQAEGRGTGGSTGDADGPGGPGIPDGPNGAGPGEAGATGGRGPRGAGAARASGPGGGAPRPHGGAAS  
 GLNGCCRCGARGPESRLLEFYLAAMPFATPMEAELARRSLAQDAPPLPVPGVLLKEFTVSGNILTIRLTAA  
 DHRQLQLSISSCLQQLSLLMWITQCFLPVFLAQPPSQRR

**TRTRPLE** - GFP Tag - V

**Restriction Sites:** Sgfl-MluI



[View online »](#)

**Cloning Scheme:**


**ACCN:** NM\_001327

**ORF Size:** 540 bp

**OTI Disclaimer:** The molecular sequence of this clone aligns with the gene accession number as a point of reference only. However, individual transcript sequences of the same gene can differ through naturally occurring variations (e.g. polymorphisms), each with its own valid existence. This clone is substantially in agreement with the reference, but a complete review of all prevailing variants is recommended prior to use. [More info](#)

**OTI Annotation:** This clone was engineered to express the complete ORF with an expression tag. Expression varies depending on the nature of the gene.

**Components:** The ORF clone is ion-exchange column purified and shipped in a 2D barcoded Matrix tube containing 10ug of transfection-ready, dried plasmid DNA (reconstitute with 100 ul of water).

**Reconstitution Method:**

1. Centrifuge at 5,000xg for 5min.
2. Carefully open the tube and add 100ul of sterile water to dissolve the DNA.
3. Close the tube and incubate for 10 minutes at room temperature.
4. Briefly vortex the tube and then do a quick spin (less than 5000xg) to concentrate the liquid at the bottom.
5. Store the suspended plasmid at -20°C. The DNA is stable for at least one year from date of shipping when stored at -20°C.

**RefSeq:** [NM\\_001327.2](#)

**RefSeq Size:** 806 bp

**RefSeq ORF:** 543 bp

**Locus ID:** 1485

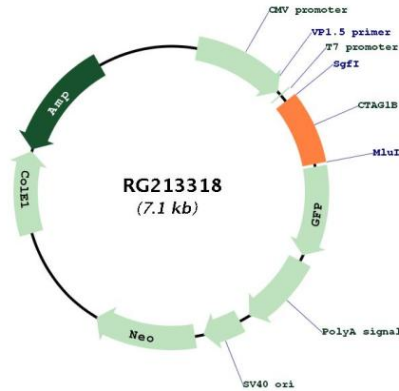
**UniProt ID:** [P78358](#)

**Cytogenetics:** Xq28

**Protein Families:** Druggable Genome

**Gene Summary:** The protein encoded by this gene is an antigen that is overexpressed in many cancers but that is also expressed in normal testis. This gene is found in a duplicated region of the X-chromosome and therefore has a neighboring gene of identical sequence. [provided by RefSeq, Jan 2012]

**Product images:**



Circular map for RG213318