

Product datasheet for **RG213298**

APE1 (APEX1) (NM_080649) Human Tagged ORF Clone

Product data:

Product Type:	Expression Plasmids
Product Name:	APE1 (APEX1) (NM_080649) Human Tagged ORF Clone
Tag:	TurboGFP
Symbol:	APE1
Synonyms:	APE; APE1; APEN; APEX; APX; HAP1; REF1
Mammalian Cell Selection:	Neomycin
Vector:	pCMV6-AC-GFP (PS100010)
E. coli Selection:	Ampicillin (100 ug/mL)
ORF Nucleotide Sequence:	>RG213298 representing NM_080649 Red=Cloning site Blue=ORF Green=Tags(s)

TTTTGTAATACGACTCACTATAGGGCGGCCGGAATTCGTCGACTGGATCCGGTACCGAGGAGATCTGCC
GCC**CGATCGCC**

ATGCCAAGCGTGGGAAAAAGGGAGCGGTGGCGGAAGACGGGGATGAGCTCAGGACAGAGCCAGAGGCCA
AGAAGAGTAAGACGGCCGCAAAGAAAAATGACAAAGAGGCAGCAGGAGAGGGCCAGCCCTGTATGAGGA
CCCCCAGATCAGAAAACCTCACCCAGTGGCAAACCTGCCACACTCAAGATCTGCTTTGGAATGTGGAT
GGGCTTCGAGCCTGGATTAAGAAGAAAGGATTAGATTGGGTAAGGAAGAAGCCCCAGATATACTGTGCC
TTCAAGAGACCAATGTTTCAGAGAACAACCTACCAGCTGAACTTCAGGAGCTGCCTGGACTCTCTCATCA
ATACTGGTCAGCTCCTTCGGACAAGGAAGGTACAGTGGCGTGGCCCTGCTTCCCGCCAGTGCCCACTC
AAAGTTTCTTACGGCATAGGCGATGAGGAGCATGATCAGGAAGGCCGGGTGATTGTGGCTGAATTTGACT
CGTTTGTGCTGGTAACAGCATATGTACCTAATGCAGGCCGAGGTCTGGTACGACTGGAGTACCGGCAGCG
CTGGGATGAAGCCTTTCGCAAGTTCTGAAGGGCTGGCTTCCGAAAGCCCTTGTGCTGTGTGGAGAC
CTCAATGTGGCACATGAAGAAATTGACCTTCGCAACCCCAAGGGGAACAAAAAGAATGCTGGCTTCACGC
CACAAGAGCGCCAAGGCTTCGGGAATTACTGCAGGCTGTGCCACTGGCTGACAGCTTTAGGCACCTCTA
CCCCAACACACCCATGCCTACACCTTTTGGACTTATATGATGAATGCTCGATCCAAGAATGTTGGTTGG
CGCCTTGATTACTTTTTGTTGTCCACTCTGTTACCTGCATTGTGTGACAGCAAGATCCGTTCCAAGG
CCCTCGGACGTGATCACTGTCCTATCACCTATACCTAGCACTG

ACGCGTACGCGGCCGCTCGAG - GFP Tag - GTTTAA



[View online »](#)

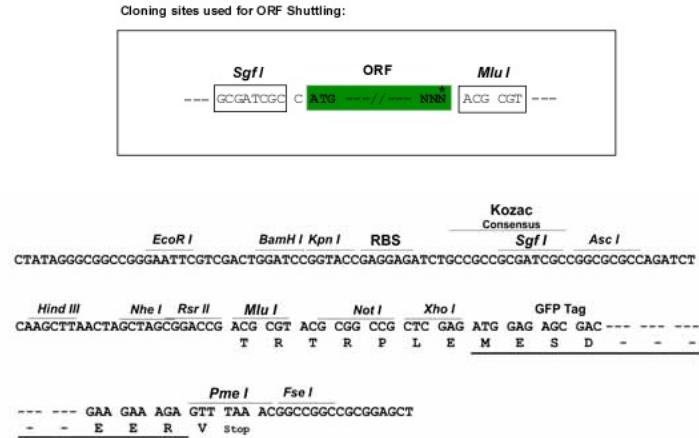
Protein Sequence: >RG213298 representing NM_080649
 Red=Cloning site Green=Tags(s)

MPKRGKKGAVAEDGDELRTPEAKKSKTAAKNDKEAAGEPALYEDPPDQKTSPSGKPATLKICSWNVD
 GLRAWIKKKGLDWYKEEAPDILCLQETKCSENKLPaelQELPGLSHQYWSAPSDKEGYSGVLLSRQCPL
 KVSYGIGDEEHDQEGRVIVAEFDSFVLVTAYVFNAGRGLVRLEYRQRWDEAFRFLKGLASRKPLVLCGD
 LNVAAHEEIDL RNPKGKKNAGFTPQERQGF GELLQAVPLADSFRLHPNTPYAYTFWYMMNARSKNVGW
 RLDYFLLSHSLLPALCDISKIRSKALGSDHCPITLYLAL

TRTRPLE - GFP Tag - V

Restriction Sites: SgfI-MluI

Cloning Scheme:



ACCN: NM_080649

ORF Size: 954 bp

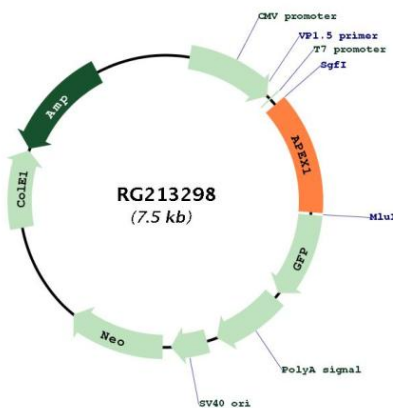
OTI Disclaimer: The molecular sequence of this clone aligns with the gene accession number as a point of reference only. However, individual transcript sequences of the same gene can differ through naturally occurring variations (e.g. polymorphisms), each with its own valid existence. This clone is substantially in agreement with the reference, but a complete review of all prevailing variants is recommended prior to use. [More info](#)

OTI Annotation: This clone was engineered to express the complete ORF with an expression tag. Expression varies depending on the nature of the gene.

Components: The ORF clone is ion-exchange column purified and shipped in a 2D barcoded Matrix tube containing 10ug of transfection-ready, dried plasmid DNA (reconstitute with 100 ul of water).

Reconstitution Method:	<ol style="list-style-type: none"> 1. Centrifuge at 5,000xg for 5min. 2. Carefully open the tube and add 100ul of sterile water to dissolve the DNA. 3. Close the tube and incubate for 10 minutes at room temperature. 4. Briefly vortex the tube and then do a quick spin (less than 5000xg) to concentrate the liquid at the bottom. 5. Store the suspended plasmid at -20°C. The DNA is stable for at least one year from date of shipping when stored at -20°C.
RefSeq:	NM_080649.3
RefSeq Size:	1511 bp
RefSeq ORF:	957 bp
Locus ID:	328
UniProt ID:	P27695
Cytogenetics:	14q11.2
Domains:	Exo_endo_phos
Protein Families:	Druggable Genome, Stem cell - Pluripotency, Transcription Factors
Protein Pathways:	Base excision repair
Gene Summary:	<p>The APEX gene encodes the major AP endonuclease in human cells. It encodes the APEX endonuclease, a DNA repair enzyme with apurinic/aprimidinic (AP) activity. Such AP activity sites occur frequently in DNA molecules by spontaneous hydrolysis, by DNA damaging agents or by DNA glycosylases that remove specific abnormal bases. The AP sites are the most frequent pre-mutagenic lesions that can prevent normal DNA replication. Splice variants have been found for this gene; all encode the same protein. Disruptions in the biological functions related to APEX are associated with many various malignancies and neurodegenerative diseases.[provided by RefSeq, Dec 2019]</p>

Product images:



Circular map for RG213298