

Product datasheet for **RG213291**

TAS2R49 (TAS2R20) (NM_176889) Human Tagged ORF Clone

Product data:

Product Type:	Expression Plasmids
Product Name:	TAS2R49 (TAS2R20) (NM_176889) Human Tagged ORF Clone
Tag:	TurboGFP
Symbol:	TAS2R49
Synonyms:	T2R20; T2R49; T2R56; TAS2R49
Mammalian Cell Selection:	Neomycin
Vector:	pCMV6-AC-GFP (PS100010)
E. coli Selection:	Ampicillin (100 ug/mL)
ORF Nucleotide Sequence:	>RG213291 representing NM_176889 Red=Cloning site Blue=ORF Green=Tags(s)

TTTTGTAATACGACTCACTATAGGGCGGCCGGAATTCGTCGACTGGATCCGGTACCGAGGAGATCTGCC
GCC**CGATCGCC**

ATGATGAGTTTTCTACACATTGTTTTTCCATTCTAGTAGTGGTGCATTTATTCTTGAAATTTTGCCA
ATGGCTTTATAGCACTGATAAATTTTCATTGCCTGGGTCAAGAGACAAAAGATCTCCTCAGCTGATCAAAT
TATTGCTGCTCTGGCAGTCTCCAGAGTTGGTTGCTCTGGGTAATATTATTACATTGGTATTCAACTGTG
TTGAATCCAACCTCATCTAATTTAAAAGTAATAATTTTTATTTCTAATGCCTGGGCAGTAACCAATCATT
TCAGCATCTGGCTTGCTACTAGCCTCAGCATATTTTATTTGCTCAAGATCGTCAATTTCTCCAGACTTAT
TTTTCATCACTTAAAAGGAAGGCTAAGAGTGTAGTTCTGGTGATAGTGTGGGGCTTTGTTCTTTTTG
GTTTGTCACCTTGATGAAACACACGTATATAATGTGTGGACAGAAGAATGTGAAGGAAACGTAACCT
GGAAGATCAAACCTGAGGAATGCAATGCACCTTTCCAACCTGACTGTAGCCATGCTAGCAAACCTTGATACC
ATTCACCTGACCCTGATATCTTTTCTGCTGTTAATCTACTCTCTGTGTAACATCTGAAGAAGATGCAG
CTCCATGGCAAAGGATCTCAAGATCCCAGCACCAAGATCCACATAAAAAGCTCTGCAAACCTGTGACCTCCT
TCCTCATATTACTTGCCATTTACTTTCTGTGTCTAATCATATCGTTTTGGAATTTAAGATGCGACCAAA
AGAAATGTCTTAATGCTTTGCCAAGCTTTTGGAAATCATATATCCATCATTCCACTCATTCTGATT
TGGGGGAACAAGACGCTAAAGCAGACCTTCTTTCAGTTTTGTGGCAGGTGACTTGCTGGCAAAAAGGAC
AGAACCAGTCAACTCCA

ACGCGTACGCGGCCGCTCGAG - GFP Tag - GTTTAA



[View online »](#)

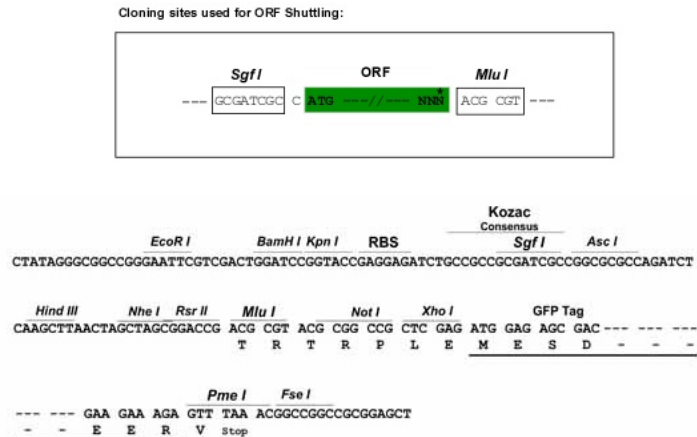
Protein Sequence: >RG213291 representing NM_176889
Red=Cloning site Green=Tags(s)

MMSFLHIVFSILVVVAFILGNFANGFIALINFIWVKRQKISSADQIIAALAVSRVGLLWVILLHWYSTV
 LNPTSSNLKVIIFISNAWAVTNHFSIWLATSLSIFYLLKIVNFSRLIFHHLKRRKAKSVVLVIVLGSFFL
 VCHLVMKHTYINWVTEECEGNVTWKIKLRNAMHLSNLTVAMLANLIPFTLTLISFLLLIYSLCKHLKMQ
 LHGKGSQDPSTKIHIKALQTVTSFLILLAIYFLLCLIIISFWNFKMRPKEIVMLCQAFGIIYPSFHSFILI
 WGNKTLKQTFLSVLWQVTCWAKGQNQSTP

TRTRPLE - GFP Tag - V

Restriction Sites: SgfI-MluI

Cloning Scheme:



ACCN: NM_176889

ORF Size: 927 bp

OTI Disclaimer: The molecular sequence of this clone aligns with the gene accession number as a point of reference only. However, individual transcript sequences of the same gene can differ through naturally occurring variations (e.g. polymorphisms), each with its own valid existence. This clone is substantially in agreement with the reference, but a complete review of all prevailing variants is recommended prior to use. [More info](#)

OTI Annotation: This clone was engineered to express the complete ORF with an expression tag. Expression varies depending on the nature of the gene.

Components: The ORF clone is ion-exchange column purified and shipped in a 2D barcoded Matrix tube containing 10ug of transfection-ready, dried plasmid DNA (reconstitute with 100 ul of water).

Reconstitution Method:

1. Centrifuge at 5,000xg for 5min.
2. Carefully open the tube and add 100ul of sterile water to dissolve the DNA.
3. Close the tube and incubate for 10 minutes at room temperature.
4. Briefly vortex the tube and then do a quick spin (less than 5000xg) to concentrate the liquid at the bottom.
5. Store the suspended plasmid at -20°C. The DNA is stable for at least one year from date of shipping when stored at -20°C.

RefSeq: [NM_176889.3](#), [NP_795370.2](#)

RefSeq Size: 930 bp

RefSeq ORF: 930 bp

Locus ID: 259295

UniProt ID: [P59543](#)

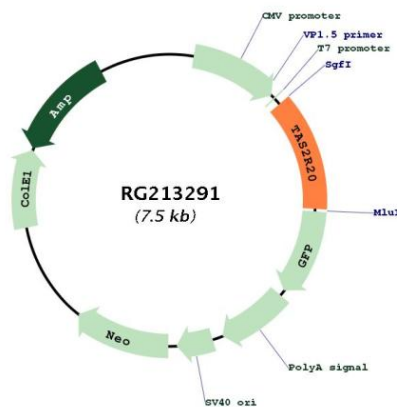
Cytogenetics: 12p13.2

Protein Families: Transmembrane

Protein Pathways: Taste transduction

Gene Summary: This gene encodes a member of the taste receptor two family of class C G-protein coupled receptors. Receptors of this family have a short extracellular N-terminus, seven transmembrane helices, three extracellular loops and three intracellular loops, and an intracellular C-terminus. Members of this family are expressed in a subset of taste receptor cells, where they function in bitter taste reception, as well as in non-gustatory cells including those of the brain, reproductive organs, respiratory system, and gastrointestinal system. This gene maps to the taste receptor gene cluster on chromosome 12p13. [provided by RefSeq, Jul 2016]

Product images:



Circular map for RG213291