

## Product datasheet for **RG213287**

### CLEC5A (NM\_013252) Human Tagged ORF Clone

#### Product data:

**Product Type:** Expression Plasmids  
**Product Name:** CLEC5A (NM\_013252) Human Tagged ORF Clone  
**Tag:** TurboGFP  
**Symbol:** CLEC5A  
**Synonyms:** CLECSF5; MDL-1; MDL1  
**Mammalian Cell Selection:** Neomycin  
**Vector:** pCMV6-AC-GFP (PS100010)  
**E. coli Selection:** Ampicillin (100 ug/mL)  
**ORF Nucleotide Sequence:** >RG213287 representing NM\_013252  
 Red=Cloning site Blue=ORF Green=Tags(s)

TTTTGTAATACGACTCACTATAGGGCGGCCGGAATTCGTCGACTGGATCCGGTACCGAGGAGATCTGCC  
 GCC**CGATCGCC**

ATGAAGTGGCACATGATCATCTCTGGGCTTATTGTGGTAGTGCTTAAAGTTGTTGGAATGACCTTATTTCT  
 TACTTTATTTCCACAGATTTTTAACAAAAGTAACGATGGTTCCACCACCAGGAGCTATGGAACAGT  
 CTCACAGATTTTGGGAGCAGTCCCAAGTCCCAACGGCTTCATTACCACAAGGAGCTATGGAACAGT  
 TGCCCAAAGACTGGGAATTTATCAAGCAAGATGTTTTTCTTATCCACTTCTGAATCATCTTGGAAAT  
 AAAGCAGGGACTTTTGCAAAGAAAAGGATCCACATTGGCAATTGTCAACAGCCAGAGAACTGAAGTT  
 TCTTCAGGACATAACTGATGCTGAGAAGTATTTTATTGGCTTAATTTACCATCGTGAAGAGAAAAGTGG  
 CGTTGGATCAACAACTCTGTGTTCAATGGCAATGTTACCAATCAGAATCAGAATTTCAACTGTGCGACAA  
 TTGGCCTAACAAAGACATTTGATGCTGCATCATGTGACATCAGCTACCGCAGGATCTGTGAGAAGAATGC  
 CAAA

**ACGCGTACGCGGCCGCTCGAG** - GFP Tag - GTTTAA

**Protein Sequence:** >RG213287 representing NM\_013252  
 Red=Cloning site Green=Tags(s)

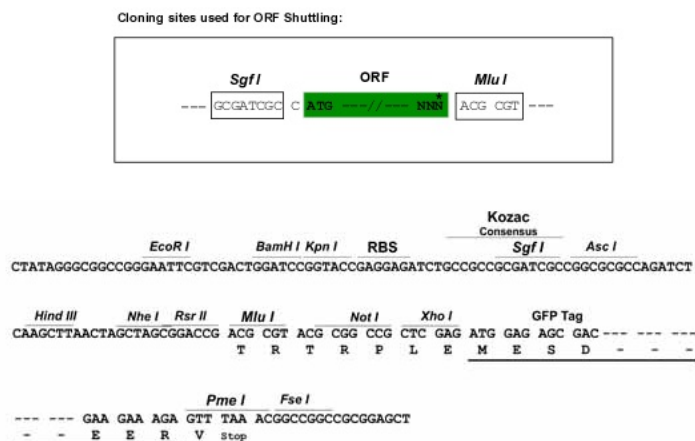
MNWHMIISGLIVVVLKVVGMTLFLLYFPQIFNKSNDGFTTTRS YGTVS QIFGSSSPSPNGFITTRS YGTV  
 CPKDW E F Y Q A R C F F L S T S E S S W N E S R D F C K G K G S T L A I V N T P E K L K F L Q D I T D A E K Y F I G L I Y H R E E K R W  
 R W I N N S V F N G N V T N Q N Q N F N C A T I G L T K T F D A A S C D I S Y R R I C E K N A K

**TRTRPLE** - GFP Tag - V

**Restriction Sites:** Sgfl-MluI



[View online »](#)

**Cloning Scheme:**


**ACCN:** NM\_013252

**ORF Size:** 564 bp

**OTI Disclaimer:** The molecular sequence of this clone aligns with the gene accession number as a point of reference only. However, individual transcript sequences of the same gene can differ through naturally occurring variations (e.g. polymorphisms), each with its own valid existence. This clone is substantially in agreement with the reference, but a complete review of all prevailing variants is recommended prior to use. [More info](#)

**OTI Annotation:** This clone was engineered to express the complete ORF with an expression tag. Expression varies depending on the nature of the gene.

**Components:** The ORF clone is ion-exchange column purified and shipped in a 2D barcoded Matrix tube containing 10ug of transfection-ready, dried plasmid DNA (reconstitute with 100 ul of water).

**Reconstitution Method:**

1. Centrifuge at 5,000xg for 5min.
2. Carefully open the tube and add 100ul of sterile water to dissolve the DNA.
3. Close the tube and incubate for 10 minutes at room temperature.
4. Briefly vortex the tube and then do a quick spin (less than 5000xg) to concentrate the liquid at the bottom.
5. Store the suspended plasmid at -20°C. The DNA is stable for at least one year from date of shipping when stored at -20°C.

**RefSeq:** [NM\\_013252.3](#)

**RefSeq Size:** 3524 bp

**RefSeq ORF:** 567 bp

**Locus ID:** 23601

**UniProt ID:** [Q9NY25](#)

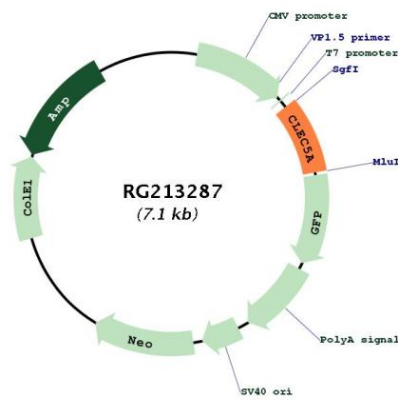
**Cytogenetics:** 7q34

**Domains:** CLECT

**Protein Families:** Druggable Genome, Transmembrane

**Gene Summary:** This gene encodes a member of the C-type lectin/C-type lectin-like domain (CTL/CTLD) superfamily. Members of this family share a common protein fold and have diverse functions, such as cell adhesion, cell-cell signalling, glycoprotein turnover, and roles in inflammation and immune response. The encoded type II transmembrane protein interacts with dnax-activation protein 12 and may play a role in cell activation. Alternative splice variants have been described but their full-length sequence has not been determined. [provided by RefSeq, Jul 2008]

**Product images:**



Circular map for RG213287