

Product datasheet for **RG213265**

CTNNA3 (NM_013266) Human Tagged ORF Clone

Product data:

Product Type:	Expression Plasmids
Product Name:	CTNNA3 (NM_013266) Human Tagged ORF Clone
Tag:	TurboGFP
Symbol:	CTNNA3
Synonyms:	ARVD13; VR22
Mammalian Cell Selection:	Neomycin
Vector:	pCMV6-AC-GFP (PS100010)
E. coli Selection:	Ampicillin (100 ug/mL)



[View online »](#)

ORF Nucleotide Sequence:

>RG213265 representing NM_013266
 Red=Cloning site Blue=ORF Green=Tags(s)

TTTTGTAATACGACTCACTATAGGGCGGCCGGGAATTCGTCGACTGGATCCGGTACCGAGGAGATCTGCC
 GCC**CGCATCGCC**

ATGTCAGCTGAAACACCAATCACATTGAATATCGATCCTCAGGATCTGCAGGTCCAAACATTCACCGTGG
 AGAAGCTACTGGAGCCTCTCATAATCCAGGTTACCACACTTGAAACTGTCCCAGAACCCCTCCAGCAG
 GAAAAAAGGACGTTGCAAAAGAGCCAGTGTCTTCTAGCTTCTGTGGAGGAAGCAACTTGAATTTATTA
 GACAAGGGAGAGAAGATTGCCAGGAAGCTACAGTTTTAAAGGATGAGCTTACGGCTTCACTTGAGGAAG
 TTCGCAAGAAAGTGAAGCTCTGAAAGTATCAGCTGAGAGATTTACAGATGACCCCTGTTTTCTCCAAA
 AAGGGAGGCTGTGGTTCAAGCTGCCCGTGCCTTGCTGGCTGCGGTGACGAGACTCCTTATCCTTGCGGAC
 ATGATTGATGTCATGTGCCTCTTGCAACATGTGTGAGCTTTTCAAAGGACATTTGAGACTCTCAAAAATG
 TTGCCAACAAATCTGACCTCCAGAAAACCTACCAGAAGCTTGAAAGGAGCTGGAAAATTTGGATTATTT
 AGCCTTCAAACGTCAGCAGGACTTAAAACTCCAATCAGAGAGATGAAATTGCAGGAGCCCGAGCTTCA
 CTGAAGGAGAAGCTCTCCCTCTTGCAATCAATTTGTTTCAGCTTGTGGAGCATTCTGATGTTGCTTCCC
 TCAAAGCAAGCAAGGACACAGTTTGTGAAGAAATTCAGAATGCTCTCAATGTAATTTCAAATGCTTCACA
 AGGGATCCAGAATATGACAACCCACCAGAACCTCAGGCAGCAACCCTGGGAAGTGCCCTTGATGAGCTG
 GAGAATTTAATGTCCTGAATCCACTCACAGTAACTGAGGAGGAAATACGACCATCACTAGAGAAACGCC
 TTGAAGCCATTATCAGTGGGGCTGCTCTGCTGGCGGATTTCTCATGTACGAGGGACTTACACCGAGAGCG
 GATTATCGCAGAATGCAACGCCATTGCGCAGGCTCTTTCAGGATCTGCTTTCAGAGTACATGAACAACGCT
 GGAAAAAAGAAAGGAGTAATACCCTGAATATTGCTTTAGACAACATGTGTAAGAAGACAAGAGACCTTC
 GCAGACGCTCCGCAAGGCTATTATAGATCATGTGTGAGACTCTTTCCTGGATACGACACTCCCTTTTT
 GGTTCTCATTGAAGCTGCTAAGAATGGCCGGGAAAAGGAAATAAAAGAATATGCTGCGATATTTTCATGAA
 CACACCAGCAGGCTTGTAGAGGTGGCAATCTTGCTTGTTCATGTCAACAAATGAAGATGGAATTTAAAA
 TTGTCAAATTCAGCCAATCATTTGGAACCTTGCTGCCACAGATTATTAATGCTGCACTTGCTTTGGC
 TGCAAGACCCAAAAGTCAAGCGGTCAAAAACCATGGAATGTACAAGCGTACATGGGAGAATCATATA
 CATGTCCTCACTGAAGCCGTAGATGACATTACAAGCATTGATGACTTCTTGCTGTATCTGAAAGCCATA
 TCTTGGAAGATGTCAACAAGTGTATCATAGCCTTAAGAGACCAGGATGCTGATAATTTAGACCGTGTGC
 GGGTGCTATCAGAGGCCGGCAGCAAGAGTTGCTCACATCGTACGGGTGAAATGGACAGTTACGAGCCA
 GGGGCTTACACGGAAGGTGTAATGAGAAATGTTAACTTCTTACAAGTACTGTAATTCCTGAATTTGTAA
 CACAAGTGAATGTTGCCTTGGAAGCCTTAAGCAAAGCTCATTGAATGTGTTGGATGATAATCAATTTGT
 GGACATCTCAAAGAAGATCTATGATACAATTCATGATATCAGATGTTTCAGTCATGATGATTCGGACCCCA
 GAGGAAGTGGAGGATGTTTCTGACCTTGAAGAGGAACACGAGGTCCGCAGTACACACCAGCATTACAGACCG
 AAGGGAAAAGTGAAGGGCTAAGATGACTCAACTGCCTGAGGCAGAAAAAGAAAGATTGCTGAGCAAGT
 TGCTGATTTCAAGAAAGTAAAGAGTAAGCTGGATGCTGAGATTGAGATATGGGATGATACAAGCAACGAC
 ATCATTGTTCTGGCCAAGAACATGTGTATGATCATGATGGAGATGACAGACTTCACTAGGGGCAAGGAC
 CACTAAAGCATACAACTGATGTGATCTATGCAGCGAAAATGATATCAGAATCAGGATCAAGGATGGATGT
 CCTTGCTCGGCAGATTGCTAATCAGTCCCAGATCCATCTGTAACAGGACTTGTGGCCTACCTGGAA
 CAGATTAAGTTCTACTCCCAACTGAAAATCTGCAGTCAAGTTAAAGCTGAGATCCAGAACCTGGGAG
 GAGAGCTCATCATGTGAGCTTTGGACAGTGTACATCCCTGATCCAAGCAGCCAAAAATTTAATGAATGC
 TGTAGTGCAACAGTGAATGTCTTACATTGCCTCAACCAAGATCATCCGAATCCAGAGTCTGCTGGG
 CCCCAGCACCCAGTTGTGATGTGGAGAATGAAGGCTCCTGCAAAAAAACCTTGATTAAGAGAGAGAAGC
 CAGAGGAAACGTGTGAGCTGTGAGCAGGCTCAGCAAGAAAAAATCCATCCATTGCAAGTCATGAG
 TGAATTTAGAGGAAGACAAATCTAC

ACGCGTACGCGGCCGCTCGAG – GFP Tag – GTTTAA

Protein Sequence: >RG213265 representing NM_013266
Red=Cloning site Green=Tags(s)

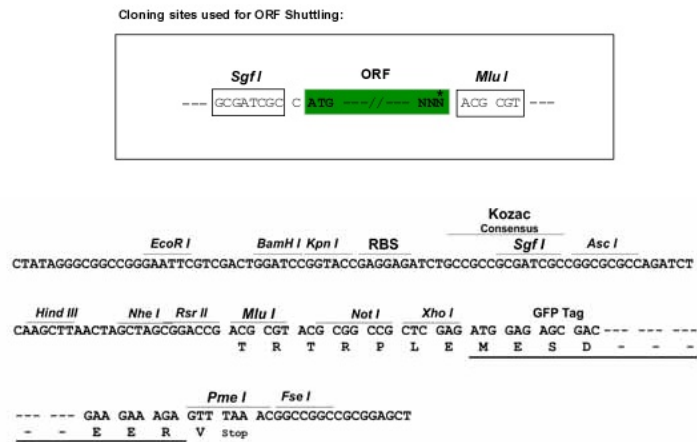
```
MSAETPITLNI DPQDLQVQFTTVEKLEPLIIQVTTLVNCPQNPSSRKKGRSKRASVLLASVEEATWNLL
DKGEKIAQEATVLKDEL TASLEEVKKESEALKVSAERFTDDPCFLPKREAVVQAARALLAAVTRLLILAD
MIDVMCLLQHVSFAFQRTFETLKNVANKSDLQKTYQKLGKELNLDYLAFKRQDDLKSPNQRDEIAGARAS
LKENSPLLHSICSACLEHSDVASLKASKDTVCEEIQNALNVISNASQGIQNMTPPEPQAATLGSALDEL
ENLIVLNPLTVTEEEIRPSLEKRLEAII SGAALLADSSCTRDLHRERIIAECNAIRQALQDLLSEYMNNA
GKKERSNTLNI ALDNMCKKTRDLRRQLRKAIDHVSDFSFLDTTVPLLVLIEAAKNGREKEIKEYAAIFHE
HTSRLVEVANLACSMSTNEDGKIVKIAANHLET LCPQIINAALALAARPKSQAVKNTMEMYKRTWENHI
HVLTEAVDDITSIDDFLAVSESHILEDVNKCI IALRDQDADNLDRAAGAIRGRAARVAHIVTGEMDSYEP
GAYTEGVMRNVNFLTSTVIPEFVTQVNVALEALSKSSLNVLDDNQFVDISKKIYDTIHDIRCSVMMIRTP
EELEDVSDLEEEHEVRSHTSIQTEGKTDRAKMTQLPEAEKEKIAEQVADFVKVSKLDAEIEIWDDTSDN
IIVLAKNMCMIMMEMTDFTRGKGPLKHTTDV IYAAKMISESGSRMDVLRQIANQCPDPSCKQDLLAYLE
QIKFYSHQLKICSQVKAIEIQLGGELIMSALDSVTSLIQAAKNLMNAVQTVKMSYIASTKIIRIQSPAG
PRHPVVMWRMKAPAKKPLIKREKPEETCAAVRRGS AKKKIHPLQVMSEFRGRQIY
```

TRTRPLE - GFP Tag - V

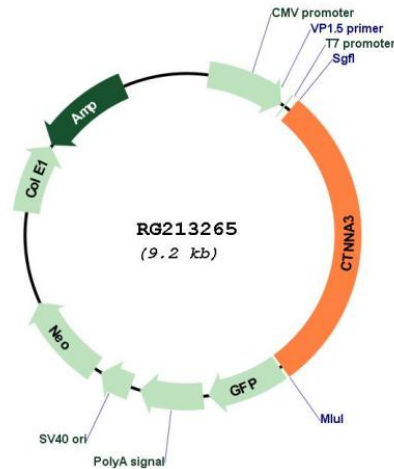
Restriction Sites:

SgfI-MluI

Cloning Scheme:



Plasmid Map:



ACCN: NM_013266

ORF Size: 2685 bp

OTI Disclaimer: The molecular sequence of this clone aligns with the gene accession number as a point of reference only. However, individual transcript sequences of the same gene can differ through naturally occurring variations (e.g. polymorphisms), each with its own valid existence. This clone is substantially in agreement with the reference, but a complete review of all prevailing variants is recommended prior to use. [More info](#)

OTI Annotation: This clone was engineered to express the complete ORF with an expression tag. Expression varies depending on the nature of the gene.

Components: The ORF clone is ion-exchange column purified and shipped in a 2D barcoded Matrix tube containing 10ug of transfection-ready, dried plasmid DNA (reconstitute with 100 ul of water).

Reconstitution Method:

1. Centrifuge at 5,000xg for 5min.
2. Carefully open the tube and add 100ul of sterile water to dissolve the DNA.
3. Close the tube and incubate for 10 minutes at room temperature.
4. Briefly vortex the tube and then do a quick spin (less than 5000xg) to concentrate the liquid at the bottom.
5. Store the suspended plasmid at -20°C. The DNA is stable for at least one year from date of shipping when stored at -20°C.

RefSeq: [NM_013266.1](#), [NP_037398.1](#)

RefSeq Size: 3024 bp

RefSeq ORF: 2688 bp

Locus ID: 29119

UniProt ID: [Q9UI47](#)

Cytogenetics: 10q21.3

Domains:	Vinculin
Protein Pathways:	Adherens junction, Arrhythmogenic right ventricular cardiomyopathy (ARVC), Endometrial cancer, Leukocyte transendothelial migration, Pathways in cancer, Tight junction
Gene Summary:	This gene encodes a protein that belongs to the vinculin/alpha-catenin family. The encoded protein plays a role in cell-cell adhesion in muscle cells. Mutations in this gene are associated with arrhythmogenic right ventricular dysplasia, familial 13. Alternative splicing results in multiple transcript variants. [provided by RefSeq, Mar 2014]