

Product datasheet for **RG213250**

IRF2BP2 (NM_182972) Human Tagged ORF Clone

Product data:

Product Type:	Expression Plasmids
Product Name:	IRF2BP2 (NM_182972) Human Tagged ORF Clone
Tag:	TurboGFP
Symbol:	IRF2BP2
Synonyms:	CVID14
Mammalian Cell Selection:	Neomycin
Vector:	pCMV6-AC-GFP (PS100010)
E. coli Selection:	Ampicillin (100 ug/mL)



[View online »](#)

ORF Nucleotide Sequence:

>RG213250 representing NM_182972
 Red=Cloning site Blue=ORF Green=Tags(s)

TTTTGTAATACGACTCACTATAGGGCGGCCGGAATTCGTCGACTGGATCCGGTACCGAGGAGATCTGCC
 GCC**CGGATCGCC**

ATGGCCGGCGGTGGCGGTGGCGGCCGCTCCGGCGGCAGTCTGTGCTACCTGTGTGACCTGCCCCGCA
 TGCCCTGGGCCATGATCTGGGACTTCACCGAACCCGCTCTGCCGCGCTGGTCAACTACGAGGGCGCCGA
 CCGCGTCGAGTTCGTCATCGAGACGGCGCGCAGCTCAAGCGGGCGCACGGCTGCTTCCCGAGGGTCCG
 TCCCCACCGGCCCGCGGCTCGGCCGCCAAGCCGCGCGCTCTCCGCCAAGGACATCCTTTTGC
 AGCAGCAGCAGCTTGGCCACGGCGGCCCGAGGGCGCCCGCGCGCCGAGGCTTGGAGCGCTA
 CCCGTTGGCGGCCGCGGCCGAGAGGCCCGCGCTCGGCTCTGACTTCGGCAGCAGCCCGCGCAGCG
 AGCCTGGCCAGCCGCGCAGCCGAGCCGCGCCGTAACGGCATCTGGTGCCAACGGCTTCTCCA
 AGCTAGAGGAACCGCCGAGCTGAATCGCCAGAGCCGAAACACGGCGGGCCACACGGTCCGCCAC
 CCTGGTCCGCTCATGAACGGCTCGGCCACGCCGCTGCCACCGCTCGGCCTCGCGGCCGCGCTGCC
 GCCTCCTTAGCCGCGGTGTCGGAAACCGCGGCCAGCCGCTGGGCTCCGCGCAGCCACCGATCTGGGCG
 CCCACAAGCGGCCGCGCATCCGTGTCGAGCAGCGCTACCGTGGAGCACGAGCAGCGTGAGGCGGCAGCCAA
 GGAGAAACAACCGCCCGCCTGCGCACCGGGCCCGGCCGACAGCCTGTCCACCGCGGCCGGGGCCGC
 GAGCTGAGCGCGGAAGGTGCGGGCAAGAGCCGCGGTCTGGAGAGCAGGACTGGGTCAACAGGCCAAGA
 CCGTGCAGCAGCAGCTGCTGGCGCTGCACCAGCAGGCCACTCGGGGCCCTTCGAGAGCAAGTTAAGAA
 GGAGCCGGCCCTGACTGCAGGCAGTTGTTGGGTTTCGAGGCCAACGGGGCCACGGGTCTAAGCAGTT
 GCAAGAACAGCAAGGAAAAGGAAGCCCTCTCCAGAACCAGAAGGTGAAGTCGGGCCCCCTAAGATCAACG
 GAGAGGCCAGCCGCTGGCTGCCACATCCACAGAGGGGCTCAAGATCCCCATGACTCTACATCCTTTT
 TGTGTCTCCGCCACCCACTGCCTCACTCATTCCAACCGGACCACACCGCCTGAAGCGGCCCAAT
 GGCCAGTCCCCATGGCAGCCCTGATCTTAGTAGCAGACAATGCAGGGGCGAGTCATGCCTCAAAAGATG
 CCAACCAGTTCACTCCACTACCAGGAGGAATAGCAACAGTCCGCCCTCTCCGTCCTCTATGAACAAAG
 AAGGCTGGGCCCCAGAGAGGTGGGGGCCAGGGAGCAGGCAACACAGGAGGACTGGAGCCAGTGCACCT
 GCCAGCTCCCGACTCCTCTGGCAACCAGTCCCCGCTGTGCTGCACCTCTGCCACGAGCGGCTGG
 AGGACACCCATTTGTGCAGTCCCGTCCCTTCGCACAAGTTCTGCTTCCCTTGTCCAGACAAG
 CATCAAACAGCAGGGAGTGTGGAGAGGTCTATTGTCCAGTGGGGAAAAATGCCCTCTGTGGGCTCC
 AATGTCCCTGGGCTTTATGCAAGGGAAATTGCAACCATCCTTGTCTGGAGATGTAAAGTAAAAAAG
 AGAGAGACTCG

ACGCGTACGCGGCCGCTCGAG – GFP Tag – GTTTAA

Protein Sequence:

>RG213250 representing NM_182972
 Red=Cloning site Green=Tags(s)

MAAAVAVAAAARRQSCYLCDLPRMPWAMIWDFTEPVCRCVNYEGADRVEFVIETARQLKRAHGCFPEGR
 SPPGAAAASAAKPPPLSAKDILLQQQQQLGHGGPEAAPRAPQALERYPLAAAAERPPRLGSDFGSSRPAA
 SLAQPTPQPPPVGILVPNGFSKLEEPPELNRSQPKPRRGHTVPPTLVPLMNGSATPLPTALGLGGRAA
 ASLAAVSGTAAASLQSAQPTDLGAHKRPASVSSATVEHEQREAAAKEKQPPPAHRGPADSLSTAAGAA
 ELSAEGAGKSRGSGEQDWVNRPKTVRDTLLALHQHGHSGPFESKFKEPALTAGRLLGFEANGANGSKAV
 ARTARKRKPSPPEGEVGPPIKINGEAQPWLSTSTEGLIKIPMTPTSFSFVSPPPPTASPHSNRTTPEAAQN
 GQSPMAALILVADNAGGSHASKDANQVHSTTRRNSNSPSPSSMNQRRLLGPREVGGQAGNTGGLEPVHP
 ASLPDSSLATSAPLCCTLCHERLEDTHFVQCPSPVSHKFCFPCSRQSIKQGGASGEVYCPGSEKCLVGS
 NVPWAFMQGEIATILAGDVKVKKERDS

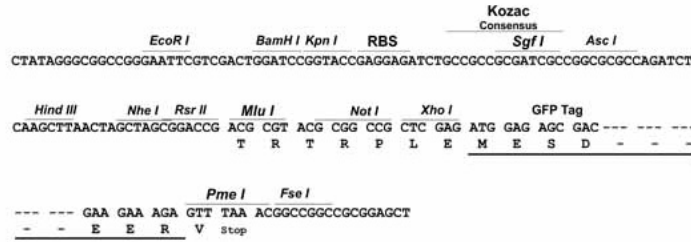
TRTRPLE – GFP Tag – V

Restriction Sites:

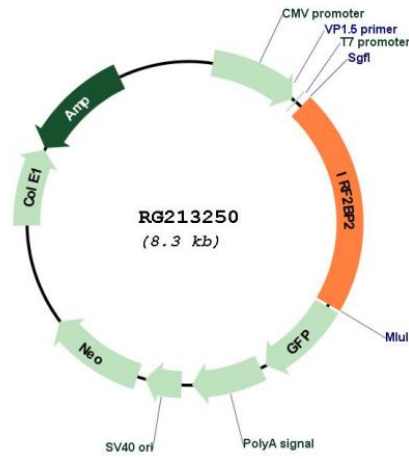
Sgfl-MluI

Cloning Scheme:

Cloning sites used for ORF Shutting:



Plasmid Map:



ACCN: NM_182972

ORF Size: 1761 bp

OTI Disclaimer:	The molecular sequence of this clone aligns with the gene accession number as a point of reference only. However, individual transcript sequences of the same gene can differ through naturally occurring variations (e.g. polymorphisms), each with its own valid existence. This clone is substantially in agreement with the reference, but a complete review of all prevailing variants is recommended prior to use. More info
OTI Annotation:	This clone was engineered to express the complete ORF with an expression tag. Expression varies depending on the nature of the gene.
Components:	The ORF clone is ion-exchange column purified and shipped in a 2D barcoded Matrix tube containing 10ug of transfection-ready, dried plasmid DNA (reconstitute with 100 ul of water).
Reconstitution Method:	<ol style="list-style-type: none">1. Centrifuge at 5,000xg for 5min.2. Carefully open the tube and add 100ul of sterile water to dissolve the DNA.3. Close the tube and incubate for 10 minutes at room temperature.4. Briefly vortex the tube and then do a quick spin (less than 5000xg) to concentrate the liquid at the bottom.5. Store the suspended plasmid at -20°C. The DNA is stable for at least one year from date of shipping when stored at -20°C.
RefSeq:	NM_182972.1 , NP_892017.1
RefSeq Size:	1900 bp
RefSeq ORF:	1764 bp
Locus ID:	359948
UniProt ID:	Q7Z5L9
Cytogenetics:	1q42.3
Protein Families:	Druggable Genome
Gene Summary:	This gene encodes an interferon regulatory factor-2 (IRF2) binding protein that interacts with the C-terminal transcriptional repression domain of IRF2. Alternative splicing results in multiple transcript variants encoding distinct isoforms. [provided by RefSeq, Jul 2008]