

Product datasheet for **RG213232**

ABL2 (NM_007314) Human Tagged ORF Clone

Product data:

Product Type:	Expression Plasmids
Product Name:	ABL2 (NM_007314) Human Tagged ORF Clone
Tag:	TurboGFP
Symbol:	ABL2
Synonyms:	ABL1; ARG
Mammalian Cell Selection:	Neomycin
Vector:	pCMV6-AC-GFP (PS100010)
E. coli Selection:	Ampicillin (100 ug/mL)
ORF Nucleotide Sequence:	>RG213232 representing NM_007314 Red=Cloning site Blue=ORF Green=Tags(s)

TTTTGTAATACGACTCACTATAGGGCGGCCGGAATTCGTCGACTGGATCCGGTACCGAGGAGATCTGCC
GCC**CGATCGCC**

ATGGGGCAGCAGGTGGCCCGCTCGGGGAAGCTCCGGGGCTCCAGCAGCCTCAGCCCCGCGGGATCCGGG
GCAGCAGTGCAGCCAGGCCCTCCGGCCGAGCGGGACCCGCGGGGCGCACCACAGAGACCGGTTCAA
TATCTTACCCAGCATGATCACTTTGCCAGCTGTGTGGAGGATGGATTTGAGGGAGACAAGACTGGAGGC
AGTAGTCCAGAAGCTTTGCATCGTCCCTATGGTTGTGATGTTGAACCCAGGCACTAAATGAGGCTATCA
GGTGGAGCTCCAAGGAGAACTTGTCTGGAGCCACTGAGAGTGACCCTAATCTTTCGTTGCACTTTATGA
TTTTGTAGCAAGTGGTGATAACACACTCAGCATCACTAAAGGTGAAAAGCTACGAGTCCCTGGTTACAAC
CAGAATGGTGAGTGGAGTGAAGTTCGCTCTAAGAATGGGCAGGGCTGGGTGCCAAGCAACTACATCACCC
CAGTGAACAGCCTGAAAAACACTCCTGGTACCATGGACCTGTGTACGCAGTGCAGCTGAGTATCTGCT
CAGCAGTCTAATCAATGGCAGCTTCCCTGGTGCGAGAAAGTGAGAGTAGCCCTGGGCAGCTGTCCATCTCG
CTCAGGTACGAGGGACGTGTGTACTACAGGATCAATACCACTGCAGATGGCAAGGTGTATGTGACTG
CTGAGAGCCGCTTCAGCACCTTGGCAGAGCTTGTACACCATCACTCCACAGTGGCTGATGGGCTGGTGAC
AACATTACACTACCCAGCACCAAGTGTAAAGCCTACAGTCTATGGTGTGTCCCCATCCACGACAAA
TGGGAAATGGAGCGAACAGATATTACCATGAAGCACAAACTTGGGGCGGTCAGTATGGAGAGTTTACG
TTGGCGTCTGGAAGAAATACAGCCTTACAGTTGCTGTGAAAACATTGAAGGAAGATACCATGGAGGTAGA
AGAATTCCTGAAAGAAGCTGCAGTAATGAAGGAAATCAAGCATCCTAATCTGGTACAACCTTTAGGTGTG
TGTACTTTGGAGCCACCATTTTACATTGTGACTGAATACATGCCATACGGGAATTTGCTGGATTACCTCC
GAGAATGCAACCGAGAAGAGGTGACTGCAGTTGTGCTGCTCTACATGGCCACTCAGATTTCTTCTGCAAT
GGAGTACTTAGAGAAGAAGAATTTATCCATAGAGATCTTGCAGCTCGTAACTGCCTAGTGGGAGAAAAAC
CATGTGGTAAAAGTGGCTGACTTTGGCTTAAGTAGATTGATGACTGGAGACACTTATACTGCTCATGCTG
GAGCCAAATTTCTATTAAGTGGACAGCACCAGAGAGTCTTGCCACAATACCTTCTCAATTAATCTGA
CGTCTGGGCTTTTGGGTATTGTTGTGGGAAATGCTACCTATGGAATGCACCATATCCAGGTATTGAC



[View online >](#)

CTGTCTCAGGTCTATGACCTACTAGAAAAAGGATATCGAATGGAACAGCCTGAGGGATGCCCCCTAAGG
 TTTATGAACCTTATGAGAGCATGCTGGAAGTGGAGCCCTGCCGATAGGCCCTCTTTTCTGAAACACACCA
 AGCTTTTGAACCATGTTCCATGACTCCAGCATTTCTGAAGAGGTAGCTGAGGAGCTTGGGAGAGCCGCC
 TCCTCGTCATCTGTTGTTCCATACCTGCCCCGGCTACCTATACTTCTTCCAAGACTCGGACACTGAAGA
 AACAGGTGGAGAACAAGGAGAACATTGAAGGGGCACAAGATGCCACAGAAAATTCGCTTCCAGTTTAGC
 ACCAGGGTTTATCAGAGGTGCACAGGCCCTCTAGTGGATCCCCAGCACTGCCTCGAAAGCAAAGAGACAAG
 TCACCCAGCAGCCTCTTGAAGATGCCAAAGAGACATGCTTACCAGGGATAGGAAGGGGGCTTCTTCA
 GCTCCTTTCATGAAGAAGAGAAATGCTCCTACACCCCAACGCAGCAGCTCCTTCCGAGAAATGGAGAA
 TCAGCCCCATAAGAAATACGAACTCACGGTAACCTTCTCATCTGTTGCTTCTCTACAGCATGCTGATGGG
 TTCTCTTTCACCTCTGCCAGCAAGAGGCGAATCTGGTCCACCCAAGTCTATGGGGGAGCTTTGCAC
 AGAGGAACCTCTGTAATGACGACGGTGGTGGGGTGGGGCAGTGGCACTGCTGGGGTGGGTGGTCTGG
 CATCACAGGCTTCTTACACCACGCTTAATCAAAAAGACACTGGGCTTACGAGCAGGTAACCCACAGCC
 AGTGATGACACTCCAAGCCTTTTCCAAGGTCAAACCTACATCTTCCATGCTCCTCAGGGCTTCCAGAGC
 AGGATAGGATGGCAATGACCCTTCCAGGAAGTCCAGAGGTCCAACTCCAGCTGGAAAGGACAGTGTC
 CACCTCTTCTCAGCCAGAAGAGAATGTGGACAGGGCCAATGACATGCTTCCAAAAAATCAGAGGAAAGT
 GCTGCTCCAAGCAGGGAGAGACCAAAAGCCAAGTTATTGCCAGAGGAGCCACAGCTCTTCTCTCAGAA
 CACCCTCTGGGGATCTAGCCATTACAGAGAAGGACCCTCCAGGGTGGGAGTGGCTGGAGTGGCAGCTGC
 CCCAAGGGTAAAGAGAAGAATGGTGGGCACGACTTGGGATGGCTGGAGTTCAGAGGATGGAGAGCAG
 CCGGGCTGGCCTTCTCCAGCCAAGGCTGCCCGCTCCTCCAACCACTACAACCACAAAGTCCAGTCC
 TTATCTCACCACTCTGAAACACACTCCAGCTGACGTGCAGCTCATTGGCACAGACTCTCAGGGGAATAA
 AAGTGTGCCCCACCCCAACCAGTGTGAGACTACTGCAGCATCCGTCATCTGCTCAGACCTACAG
 AAGAGCCAACCTGCCCTAACTGCAGGACAGTCCACATCAGAAACACAGGAAGGAGGAAAGGACGCTCT
 GGGCGCAGTGCCCATCAGTGGGAAAGCTGGAGGCCAGTGATGCCTCACCTCAAGTGCCTTGCCACA
 TCTTCCATCTCGCCAGCCAAAATGGCCAATGGCACAGCAGGTAATAAGTGGCTCTGAGAAAAACCAAC
 AGGCCGCTGAGAAAATCTCAGCAGACAAAATCAGCAAAGAGGCCCTGCTGGAATGTGCTGACCTACTGTC
 CAGTGCCTCACGGAACCTGTGCCAACAGCCAGCTGGTAGACTGGACACCAGCTGCTTGACTACTGC
 TCAGGCTATGTGGACTGCATCCCTCAAACCTCGCAACAAATTTGCCTTCCGAGAGGCTGTGAGCAAAC
 AACTCAGCCTGCAGGAGTACAGGTTTCTTCCAGCAGCTGCTGGTGTGCCGGGACAAACCCTGCTCTTAA
 TAACTTATTGTCATGTGTACAGGAAATCAGTGATGTGGTGCAGAG

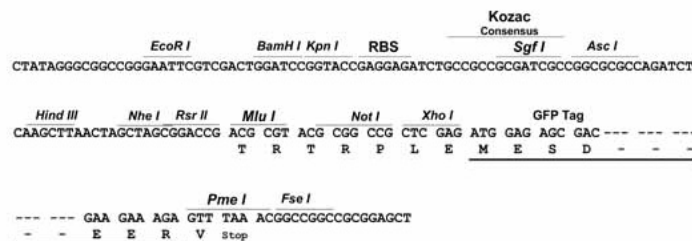
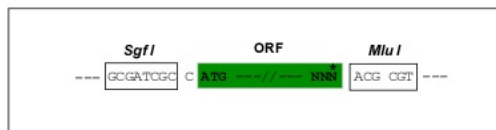
ACGCGTACGCGGCCGCTCGAG - GFP Tag - GTTTAA

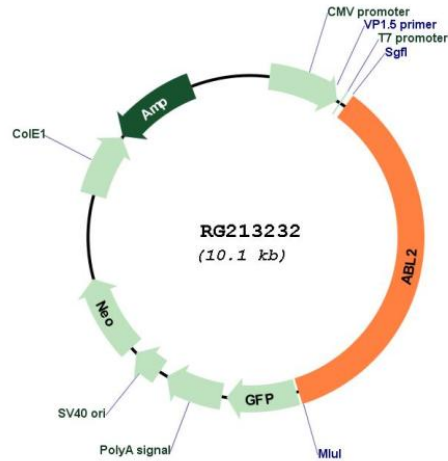
Restriction Sites:

Sgfl-MluI

Cloning Scheme:

Cloning sites used for ORF Shuttling:



Plasmid Map:


ACCN: NM_007314

ORF Size: 3546 bp

OTI Disclaimer: The molecular sequence of this clone aligns with the gene accession number as a point of reference only. However, individual transcript sequences of the same gene can differ through naturally occurring variations (e.g. polymorphisms), each with its own valid existence. This clone is substantially in agreement with the reference, but a complete review of all prevailing variants is recommended prior to use. [More info](#)

OTI Annotation: This clone was engineered to express the complete ORF with an expression tag. Expression varies depending on the nature of the gene.

Components: The ORF clone is ion-exchange column purified and shipped in a 2D barcoded Matrix tube containing 10ug of transfection-ready, dried plasmid DNA (reconstitute with 100 ul of water).

- Reconstitution Method:**
1. Centrifuge at 5,000xg for 5min.
 2. Carefully open the tube and add 100ul of sterile water to dissolve the DNA.
 3. Close the tube and incubate for 10 minutes at room temperature.
 4. Briefly vortex the tube and then do a quick spin (less than 5000xg) to concentrate the liquid at the bottom.
 5. Store the suspended plasmid at -20°C. The DNA is stable for at least one year from date of shipping when stored at -20°C.

RefSeq: [NM_007314.4](#)

RefSeq Size: 3849 bp

RefSeq ORF: 3549 bp

Locus ID: 27

UniProt ID: [P42684](#)

Cytogenetics:	1q25.2
Domains:	pkinase, SH2, TyrKc, SH3, S_TKc
Protein Families:	Druggable Genome, Protein Kinase
Protein Pathways:	ErbB signaling pathway, Viral myocarditis
Gene Summary:	<p>This gene encodes a member of the Abelson family of nonreceptor tyrosine protein kinases. The protein is highly similar to the c-abl oncogene 1 protein, including the tyrosine kinase, SH2 and SH3 domains, and it plays a role in cytoskeletal rearrangements through its C-terminal F-actin- and microtubule-binding sequences. This gene is expressed in both normal and tumor cells, and is involved in translocation with the ets variant 6 gene in leukemia. Multiple alternatively spliced transcript variants encoding different protein isoforms have been found for this gene. [provided by RefSeq, Nov 2009]</p>