

Product datasheet for **RG213198**

ATAD3A (NM_018188) Human Tagged ORF Clone

Product data:

Product Type:	Expression Plasmids
Product Name:	ATAD3A (NM_018188) Human Tagged ORF Clone
Tag:	TurboGFP
Symbol:	ATAD3A
Synonyms:	HAYOS; PHRINL
Mammalian Cell Selection:	Neomycin
Vector:	pCMV6-AC-GFP (PS100010)
E. coli Selection:	Ampicillin (100 ug/mL)



[View online »](#)

ORF Nucleotide Sequence:

>RG213198 representing NM_018188
 Red=Cloning site Blue=ORF Green=Tags(s)

TTTTGTAATACGACTCACTATAGGGCGGCCGGGAATTCGTCGACTGGATCCGGTACCGAGGAGATCTGCC
 GCC**CGATCGCC**

ATGTCGTGGCTCTTCGGCATTACAAGGGCCCCAAGGGTGAAGGCGGGGCCGCCGCCCTTTGCCGC
 CCGCGCAGCCCGGGCCGAGGGCGGGGACCGGGTTGGGAGACCGCCGGCCCAAGGACAAATG
 GAGCAACTTCGACCCACCGCCTGGAGCGCGCCCAAGGCGGCGGAGCTGGAGCACTCGCGTTAT
 GCCAAGGACGCCCTGAATCTGGCACAGATGCAGGAGCAGACGCTGCAGTTGGAGCAACAGTCCAAGCTCA
 AAATGCGGCTGGAAGCCCTGAGCCTGCTGCACACTAGTCTGGGCATGGAGTCTCTGCCGTGCCGAGC
 CGTGCAGACACAGGAGCGGCTGTCAGGCAGTGCCAGCCCTGAGCAAGTCCAGCTGGTGAAGTGTGTCT
 CTGCAGGAGTATGAGGCCCGTGGAGCAGCTCAAGAGCGAGCAGATCCGGGCGCAGGCTGAGGAGAGGA
 GGAAGACCCTGAGCGAGGAGACCGGCAGCACCAGGCCAGGGCCAGTATCAAGACAAGTGGCCCGGCA
 GCGCTACGAGGACCAACTGAAGCAGCAGCAACTTCTCAATGAGGAGAATTTACGGAAGCAGGAGGAGTCC
 GTGCAGAAAGCAGGAAGCCATGCGGCGAGCCACCGTGGAGCGGGAGATGGAGCTGCCGCACAAGAATGAGA
 TGCTGCGAGTGGAGGCCGAGGCCCGGGCGCGCCAAGGCCGAGCGGGAGAATGCAGACATCATCCGCGA
 GCAGATCCGCCTGAAGGCGGCCGAGCACCGTCAAGCCGCTTGGAGTCCATCAGGACGGCTGGCACCTTG
 TTTGGGAAGGATTCCTGTCCTTTGTGACAGACTGGGACAAAGTACAGCCACCGTGGCTGGGCTGACGC
 TGCTGGCTGTTGGGGTCTACTCAGCCAAGAATGCCACGCTTGTGCGCCGGCCGTTTCATCGAGGCTCGGCT
 GGGGAAGCCGTCCTAGTGAGGGAGACGTCCTCCGATCACGGTGTGAGGCGCTGCGGCACCCCATCCAG
 GTCAGCCGGCGGCTCCTCAGTCGACCCAGGACGCGCTGGAGGGTGTGTGCTCAGTCCCAGCCTGGAAG
 CACGGGTGCGCGACATCGCCATAGCAACAAGGAACACCAAGAAGAACCAGCAGCTGTACAGGAACATCCT
 GATGTACGGGCCACAGGCACCGGGAAGACGCTGTTTGCCAAGAACTCGCCCTGCACTCAGGCATGGAC
 TACGCCATCATGACAGGCGGGGACGTCGGCCCCATGGGGCGGGAAGGCGTGACCGCCATGCAACAAGTCT
 TTGACTGGGCCAATACCAGCCGGCGCGCCTCCTGCTCTTTGTGGATGAAGCGGACGCTTCTCTCGGAA
 GCGAGCCACCGAGAAGATAAGCGAGGACCTCAGGGCCACACTGAACGCTTCTGTACCGCACGGGCCAG
 CACAGCAACAAGTTCATGCTGGTCTGGCCAGCAACCAACCAGAGCAGTTCGACTGGGCCATCAATGACC
 GCATCAATGAGATGGTCCACTTCGACCTGCCAGGGCAGGAGGAACGGGAGCGCTGGTGAAGATGTATTT
 TGACAAGTATGTTCTTAAGCCGGCCACAGAAGGAAAGCAGCGCCTGAAGCTGGCCAGTTTGACTACGGG
 AGGAAGTCTCGGAGGTCCTCGGCTGACGGAGGCATGTGGGGCGGGAGATCGCTCAGCTGGCCGTGT
 CCTGGCAGGCCACGGCGTATGCCTCCGAGGACGGGGTCTGACCGAGGCCATGATGGACACCCGCGTGCA
 AGATGCTGTCCAGCAGCACCAGCAGAAGATGTGCTGGCTGAAGGCGGAAGGGCCTGGGCGTGGGGACGAG
 CCTCCCCATCC

ACGCGTACGCGGGCCGCTCGAG – GFP Tag – GTTTAA

Protein Sequence:

>RG213198 representing NM_018188
 Red=Cloning site Green=Tags(s)

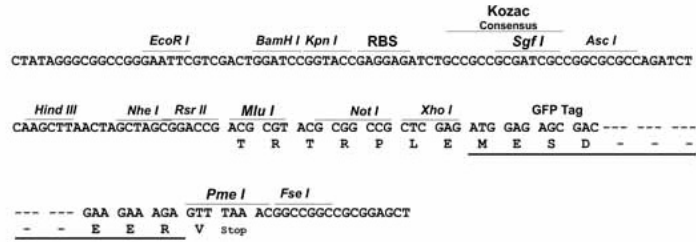
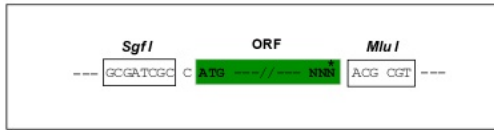
MSWLFGINKGPKGEGAGPPPLPPAQPGEAGGGDRGLGDRPAPKDKWSNFDPTGLERAACAARELEHSRY
 AKDALNLAQMQEQLQLEQQSKLKMRLLEALLHLVWAWSLCRAGAVQTQERLSGSASPEQVPAGECCA
 LQEYEAAVEQLKSEQIRAQAEERRKTLSEETRQHQAQYQDKLARQRYEDQLKQQQLLNEENLRKQES
 VQKQEAAMRRATVEREMELRHKNEMLRVEAEARARAKAERENADIIREQIRLKAAEHRQTVLESIRTAGTL
 FGEGFRAFVTDWDKVTATVAGLTLAVGVYSAKNATLVAGRFLIARLKGPSLVRETSRITVLEALRHPIQ
 VSRRLSRPQDALEGVVLSPSLEARVRDIAIATRNTKKNRSLYRNILMYGPPGTGKTLFAKLLALHSGMD
 YAIMTGGDVAPMGREGVTAMHKLFDWANTSRRLGLLLVFVDEADAFLRKRATEKISEDLRATLNAFLYRTGQ
 HSNKFMLVLASNQPEQFDWAINDRINEMVHFDLPQEERERLVRMYFDKYVLKPATEGKQRLKLAQFDYG
 RKCSEVARLTEGMSGREIAQLAVSWQATAYASEDGVLTEAMMDTRVQDAVQQHQKMCWLKAEGRGGRGDE
 PSPS

TRTRPLE – GFP Tag – V

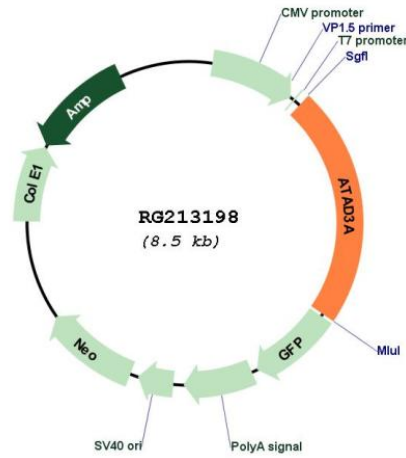
Restriction Sites: SgfI-MluI

Cloning Scheme:

Cloning sites used for ORF Shutting:



Plasmid Map:



ACCN: NM_018188

ORF Size: 1902 bp

OTI Disclaimer: Due to the inherent nature of this plasmid, standard methods to replicate additional amounts of DNA in E. coli are highly likely to result in mutations and/or rearrangements. Therefore, OriGene does not guarantee the capability to replicate this plasmid DNA. Additional amounts of DNA can be purchased from OriGene with batch-specific, full-sequence verification at a reduced cost. Please contact our customer care team at custsupport@origene.com or by calling 301.340.3188 option 3 for pricing and delivery.

The molecular sequence of this clone aligns with the gene accession number as a point of reference only. However, individual transcript sequences of the same gene can differ through naturally occurring variations (e.g. polymorphisms), each with its own valid existence. This clone is substantially in agreement with the reference, but a complete review of all prevailing variants is recommended prior to use. [More info](#)

OTI Annotation: This clone was engineered to express the complete ORF with an expression tag. Expression varies depending on the nature of the gene.

Components: The ORF clone is ion-exchange column purified and shipped in a 2D barcoded Matrix tube containing 10ug of transfection-ready, dried plasmid DNA (reconstitute with 100 ul of water).

Reconstitution Method:

1. Centrifuge at 5,000xg for 5min.
2. Carefully open the tube and add 100ul of sterile water to dissolve the DNA.
3. Close the tube and incubate for 10 minutes at room temperature.
4. Briefly vortex the tube and then do a quick spin (less than 5000xg) to concentrate the liquid at the bottom.
5. Store the suspended plasmid at -20°C. The DNA is stable for at least one year from date of shipping when stored at -20°C.

RefSeq: [NM_018188.5](#)

RefSeq Size: 2656 bp

RefSeq ORF: 1905 bp

Locus ID: 55210

UniProt ID: [Q9NV17](#)

Cytogenetics: 1p36.33

Domains: AAA, AAA

Gene Summary:

This gene encodes a ubiquitously expressed mitochondrial membrane protein that contributes to mitochondrial dynamics, nucleoid organization, protein translation, cell growth, and cholesterol metabolism. This gene is a member of the ATPase family AAA-domain containing 3 gene family which, in humans, includes two other paralogs. Naturally occurring mutations in this gene are associated with distinct neurological syndromes including Harel-Yoon syndrome. High-level expression of this gene is associated with poor survival in breast cancer patients. A homozygous knockout of the orthologous gene in mice results in embryonic lethality at day 7.5 due to growth retardation and defective development of the trophoblast lineage. Alternative splicing results in multiple transcript variants. [provided by RefSeq, Feb 2017]