

Product datasheet for **RG213194**

PIGQ (NM_004204) Human Tagged ORF Clone

Product data:

Product Type:	Expression Plasmids
Product Name:	PIGQ (NM_004204) Human Tagged ORF Clone
Tag:	TurboGFP
Symbol:	PIGQ
Synonyms:	c407A10.1; DEE77; EIEE77; GPI1
Mammalian Cell Selection:	Neomycin
Vector:	pCMV6-AC-GFP (PS100010)
E. coli Selection:	Ampicillin (100 ug/mL)



[View online »](#)

ORF Nucleotide Sequence:

>RG213194 representing NM_004204
 Red=Cloning site Blue=ORF Green=Tags(s)

TTTTGTAATACGACTCACTATAGGGCGGCCGGAATTCGTCGACTGGATCCGGTACCGAGGAGATCTGCC
 GCC**CGCATCGCC**

ATGGTGCTCAAGGCCTTCTTCCCACGTGCTGCGTCTCGACGGACAGCGGGCTGCTGGTGGGACGGTGGG
 TGCCGGAGCAGAGCAGCGCCGTGGTCTGGCGGTCTGCACTTTCCCTTCATCCCCATCCAGGTCAAGCA
 GCTCCTGGCCAGGTGCGGCAGGCCAGCCAGGTGGGCGTGGCCGTGCTGGCACCTGGTGCCACTGCCGG
 CAGGAGCCGAGGAGAGCCTGGGCCGCTTCTGGAGAGCCTGGGTGCTGTCTTCCCCATGAGCCCTGGC
 TGCGGCTGTGCCGGGAGAGAGCGGCACGTTCTGGAGCTGCGAGGCCACCCACCGCAAGCGCCACTGC
 CCCCAGTCCCTGGTGAGGACCAGTTCATGCTCATCTTCTATGACCAGCGCCAGGTGTTGCTGTACAG
 CTACACCTGCCACCGTCTGCCGACCGCCAGGTGGAGCCACCACTGCCAGCACGGGGGGCTGGCTG
 CCGTCTTCGACACGGTAGCACGCAGTGAGGTGCTCTTCCGAGTGACCGTTTATGAGGGCCCCGTGCG
 GCTGAGCCACTGGCAGTCGGAGGGCGTGGAGGCCAGCATCTCGGGAGCTGGCCAGGCGAGCCTCGGA
 CCATTTGCCTGTGTTGGCCAGCCTGCTGCTGCTGGTCTCAGCTGTAGTGCCTGCCGAGTGTCAAGC
 TCTGGCCCTGTCTTCTCGGGAGCAAACCTCCACGTGCGAACAGCTCCGGCACCGGCTGGAGCACCT
 CACGCTAATCTTCAGTACACGGAAGCGGAGAACCCTGCCAGCTGATGAGGAAGGCCAACACGGTGGCC
 TCTGTGCTGTGGACGTGGCCCTGGGCCTCATGCTGTCTGCTGCTCCACGGGAGAAGCCGCATCGGGC
 ATCTGGCCGACGCCCTCGTTCCTGTGGCTGACCACGTGGCCGAGGAGCTCCAGCATCTGCTGCAGTGGT
 GATGGGTGCTCCCGCCGGCTCAAGATGAACCGTGCACCTGGACCAGGTGCTGGGCCGCTTCTTCTCTAC
 CACATCCACCTGTGGATCAGTACATCCACCTCATGTCCCCTTCGTGGAGCACATCCTTGGCACGTGG
 GCCTCTCGGCCTGCCTGGCCTGACGGTGGCCCTGTCCCTCTCGGACATTATCGCCCTCTCACCT
 CCACATCTACTGCTTTTACGTCTATGGAGCCAGGCTGTACTGCCTGAAGATCCATGGCCTGTCTCACTG
 TGGCGTCTGTTCCGGGGAGAAGTGAACGTTCTGCGCCAGCGCGTGGACTCCTGTTCTATGACCTGG
 ACCAGCTGTTATCGGGACTCTGCTCTTACCACCTGCTCTTCTCTGCTTACCACAGCCCTGTACTA
 CCTGGTGTTCACCCTGCTCCGGCTCCTGGTGGTCCGCGTGCAGGGCCTGATCCATCTGCTCGTGGACCTC
 ATCAACTCCCTGCCGCTGTACTCACTGGGTCTTCCGGCTCTGCCGGCCCTACAGGCTGGCGGCTGGCGTGA
 AGTTCGCTGCTCCGGCAGGAGCCGGCAGGCCCTCCGCTCCTGATGCAGATAAACCCACTGCCCTA
 CAGCCCGTGGTGCACACCTACCGCTCCCCAGCTGTGGCTGCCACCCCAAGCACTCTGGGGCGCCCTG
 TGCCGAAGCTGTTCTTGGGGAGCTCATCTACCCTGGAGGCAGAGAGGGGACAAGCAGGAC

ACGCGTACGCGGCCGCTCGAG - GFP Tag - GTTTAA

Protein Sequence:

>RG213194 representing NM_004204
 Red=Cloning site Green=Tags(s)

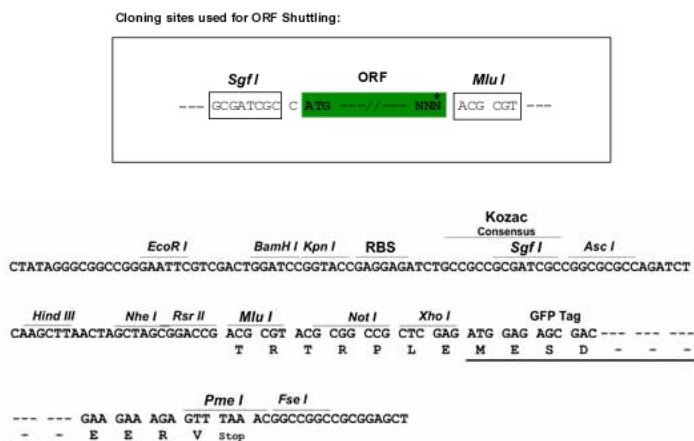
MVLKAFFPTCCVSTDSGLLVGRVWPEQSSAVLAVLHFFPIPIQVKQLLAQVRQASQVGVAVLGTWCHCR
 QEPEESLGRFLES LGAVFPHEPWLRLCRERGGTFWSCEATHRQAPTAPGAPGEDQVMLIFYDQRQVLLSQ
 LHLPTVLPDRQAGATTASTGGLAAVFDTVARSEVLFRRDRFDEGPVRLSHWQSEGVEASILAELARRASG
 PICLLLASLLSLVSAVSACRVFKLWPLSFLGSKLSTCEQLRHRLEHLTLIFSTRKAENPAQLMRKANTVA
 SVLLDVALGLMLLSWLHGRSRIGHLADALVPVADHVAEELQHLLQWLMGAPAGLKMNRLDQVLGRFFLY
 HIHLWISYIHLMSPFVEHILWHVGLSACLGLTVALSLLSDIALLTFHIYCFYVYGARLYCLKIHGLSSL
 WRLFRGKKNVLRQRVDSCSYDLQDLFIGTLLFTILLFLLPTTALYYLVFTLLRLLVVAVQGLIHLLVDL
 INSLPLYSGLRLCRPYRLAAGVKFRVLRHEAGRPLRLLMQINPLPYSRVVHTYRLPSCGCHPKHSGAL
 CRKFLGELIYPWRQRGDKQD

TRTRPLE - GFP Tag - V

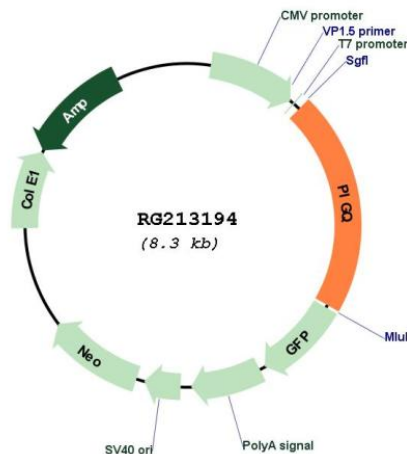
Restriction Sites:

SgfI-MluI

Cloning Scheme:



Plasmid Map:



ACCN: NM_004204
 ORF Size: 1743 bp

OTI Disclaimer:	The molecular sequence of this clone aligns with the gene accession number as a point of reference only. However, individual transcript sequences of the same gene can differ through naturally occurring variations (e.g. polymorphisms), each with its own valid existence. This clone is substantially in agreement with the reference, but a complete review of all prevailing variants is recommended prior to use. More info
OTI Annotation:	This clone was engineered to express the complete ORF with an expression tag. Expression varies depending on the nature of the gene.
Components:	The ORF clone is ion-exchange column purified and shipped in a 2D barcoded Matrix tube containing 10ug of transfection-ready, dried plasmid DNA (reconstitute with 100 ul of water).
Reconstitution Method:	<ol style="list-style-type: none">1. Centrifuge at 5,000xg for 5min.2. Carefully open the tube and add 100ul of sterile water to dissolve the DNA.3. Close the tube and incubate for 10 minutes at room temperature.4. Briefly vortex the tube and then do a quick spin (less than 5000xg) to concentrate the liquid at the bottom.5. Store the suspended plasmid at -20°C. The DNA is stable for at least one year from date of shipping when stored at -20°C.
RefSeq:	NM_004204.5
RefSeq Size:	2921 bp
RefSeq ORF:	1746 bp
Locus ID:	9091
UniProt ID:	Q9BRB3
Cytogenetics:	16p13.3
Domains:	Gpi1
Protein Families:	Transmembrane
Protein Pathways:	Glycosylphosphatidylinositol(GPI)-anchor biosynthesis, Metabolic pathways
Gene Summary:	This gene is involved in the first step in glycosylphosphatidylinositol (GPI)-anchor biosynthesis. The GPI-anchor is a glycolipid found on many blood cells and serves to anchor proteins to the cell surface. This gene encodes a N-acetylglucosaminyl transferase component that is part of the complex that catalyzes transfer of N-acetylglucosamine (GlcNAc) from UDP-GlcNAc to phosphatidylinositol (PI). Alternatively spliced transcript variants encoding different isoforms have been found for this gene. [provided by RefSeq, Jun 2012]