

Product datasheet for **RG213177**

ATP2B1 (NM_001001323) Human Tagged ORF Clone

Product data:

Product Type:	Expression Plasmids
Product Name:	ATP2B1 (NM_001001323) Human Tagged ORF Clone
Tag:	TurboGFP
Symbol:	ATP2B1
Synonyms:	PMCA1; PMCA1kb
Mammalian Cell Selection:	Neomycin
Vector:	pCMV6-AC-GFP (PS100010)
E. coli Selection:	Ampicillin (100 ug/mL)
ORF Nucleotide Sequence:	>RG213177 representing NM_001001323. Blue=ORF Red=Cloning site Green=Tag(s)

```
GCTCGTTTGTGAAACCGTCAGAATTTGTAAACGACTCACTATAGGGCGCCGGGAATTCGTCGACTG
GATCCGGTACCGAGGAGATCTGCCGCCCGCATCGCC
ATGGGCGACATGGCAAACAACACTCAGTTGCTTACAGTGGTGTGAAAACTCTTTGAAGGAAGCTAATCAT
GATGGAGACTTTGGAATTACGCTCGCAGAGCTGCGGGCTCTCATGGAGCTCAGGTCCACAGATGCATTA
CGAAAAATACAGGAAAGCTATGGAGATGTCTATGGAATTTGCACCAAATTGAAAACATCTCCAATGAA
GGTTTAAGTGGAAACCCGCAGATTTAGAAAGAAGAGAAGCAGTGTGGAAAGAATTTATACCTCCT
AAAAAGCCAAAAACCTTTCTCAATTAGTATGGGAAGCATTACAAGATGCACCTTAATTATATTAGAA
ATTGCAGCCATAGTATCATTGGGCCTTTCTTTTATCAGCCTCCAGAAGGGGATAATGCACCTTTGTGGA
GAAGTTTCTGTTGGGGAGGAAGAAGGTGAAGGTGAAACTGGTTGGATTGAAGGAGCTGCAATCCTCTTG
TCTGTAGTGTGTGGTGTAGTAAACAGCTTCAATGACTGGAGTAAGGAAAAACAGTTTAGAGGTTTG
CAGAGCCGAATTGAACAAGAACAGAAGTTCACCTGTATCAGGGGTGGTCAGGTCATTAGATACCTGTA
GCTGACATTACTGTTGGAGATATTGCTCAAGTGAATAAGGTGATCTTCTCCAGCTGACGGCATACTT
ATTCAAGGCAACGATCTTAAAATTGATGAAAGCTCATTGACTGGTGAATCAGATCATGTTAAAAGTCT
TTAGATAAGGATCCCTTACTTCTATCAGGTACTCATGTAATGGAAGGCTCTGGAAGAATGGTAGTTACA
GCTGTAGGTGTAATTTCTCAACTGGAATTATCTTTACCTTACTTGGAGCTGGAGGTGAAGAGGAAGAG
AAGAAAGATGAGAAGAAAAAGGAAAAAAGAAAAAATGAAACAAGATGGAGCTATTGAGAATCGCAACAAA
GCAAAAGCCAGGATGGTGCAGCCATGGAAATGCAGCCATTGAAGAGTGAAGAAGGTGGAGATGGTGAT
GAAAAAGATAAAAAAGAAAGCAAAATTTGCCAAAAAAGGAAAAATCTGTTTTACAAGGGAAACTTACAAA
CTGGCTGTTTACAGATTGGCAAAGCAGGTCTGTTGATGTCTGCCATCACAGTTATCATTCTAGTATTATAT
TTTGTCTTACACCTTCTGGGTTTCAAGAAAGACCATGGCTTGTGAGTGCACACCAATTTATATACAA
TACTTTGTGAAGTTCTTCAATTATTGGAGTTACAGTTTTAGTGGTGCAGTGCCAGAAGGTCTTCCACTT
GCAGTCACGATCTCACTGGCTTATTCAGTCAAAAAATGATGAAAGATAATAACTTAGTAAGGCATCTG
GATGCTTGTGAAACCATGGGAAATGCTACAGCTATTTGTTTCAAGATAAAACAGGAAGTTTGAACATGAAC
AGAAATGACAGTCGTTCAAGCTTACATAAATGAAAAACATTATAAAAAGGTTCTGAACCAGAAGCTATT
```



[View online >](#)

CCACCAATATTTTGCCTATCTTGTAAACAGGAATTTCTGTGAATTGTGCTTATACATCAAAAATATTG
CCACCAGAGAAAGAGGGTGGATTACCTCGTCACGTTGGTAATAAAACTGAATGTGCCTTGTGGGACTT
CTTTTGGATTTAAACCGGATTATCAGGATGTTAGAAATGAAATACCAGAAGAAGCACTGTACAAAGTC
TACACCTTCAATTCTGTTAGGAAGTCCATGAGTACTGCCTGAAAAATTCAGATGGAAGTTATCGAATA
TTCAGCAAGGGTGCATCTGAGATAAATCTGAAAAAGTGTTCAAAATCTGAGTGCTAATGGTGAGGCA
AAAGTATTCAGACCAAGGGACCGTGATGATTTGTA AAAACTGTGATTGAACCGATGGCATCAGAAGGC
TTGAGAACCATATGTCTTGCAATTCAGAGATTTCCAGCAGGAGAACCAGAACCAGAGTGGGATAATGAA
AATGATATTGTCACCGGCCTTACATGCATTGCTGTTGTGGGGATTGAAGATCCTGTGAGACCTGAGGTG
CCAGATGCAATTA AAAAGTGTGAGAGGGCTGGAATTA CTGTGCGGATGGTCACTGGTGATAATTAAT
ACTGCTCGGGCCATTGCTACCAATGTGGTATTTTACATCCTGGGGAAGATTTTCTGTGCCTAGAAGGT
AAAGATTTTAACAGAAGAATACGAAATGAAAAAGGAGAGATTGAGCAAGAGAGGATAGACAAGATTTGG
CCAAAACCTCGAGTACTGCAAGATCATCTCTACTGATAAGCATACTGGTTAAAGGTATAATTGAC
AGCACTGTCTCAGACCAACGCCAGGTTGTAGCTGTA ACTGGTGATGGTACAAATGATGGCCAGCACTA
AAGAAAGCAGATGTTGGATTTGCAATGGGTATTGCTGGA ACTGATGTAGCTAAAGAAGCATCCGATATT
ATTCTCACAGATGACAAC TTTACAAGCATTGTTAAAGCAGTTATGTGGGGACGAAATGTCTATGACAGC
ATCTCAAAATTCCTTCAGTTCCTCAACTTACTGTTAATGTAGTAGCAGTGATTGTTGCTTTTACGGGCGCC
TGCACTACTCAAGACTCACCGCTTAAGGCTGTGCAGATGCTGTGGGTAACCTCATAATGGATACACTC
GCTTCCCTGGCTCTGGCAACGGAACCCCACTGAGTCTCTCTTGTCTCGGAAACCTTATGGTAGAAT
AAGCCTCTCATCTCACGTACAATGATGAAGAATATTTGGGTCATGCATTCTATCAACTTGTAGTAGTC
TTTACTCTTATTTGCTGGAGAAAAGTTTTTGGACATTGATAGTGGAAGAAATGCTCCTTTGCATGCT
CCTCCTCAGAACATTACTATTGTTTTTAATACCTTTGTGCTGATGCAACTTTTCAACGAAATAAAT
GCCCCGAAAATTCATGGTGAAAGAAATGATTCGAAGGAATCTTAAACAATGCCATCTTCTGCACAATT
GTTTTAGGCAC TTTTGTGGTACAGATAATAATTGTGCAGTTTGGTGGA AACCTTTCAGTTGTTTCAGAA
CTTTCAATAGAACAGTGGCTATGGTCAATATTCCTAGGAATGGGAACATTACTCTGGGGCCAGCTTATT
TCAACAATTCCA ACTAGCCGTTTTAAAATTCCTCAAAGAAGCTGGTCA TGGAACACAAAAGGAAGAAATA
CCTGAGGAGGAATTAGCAGAGGATGTTGAAGAGATTGATCACGCTGAAAGGGAGTTGCGGCGTGCCAA
ATCTTGTGGTTTAGAGGCTGAACAGAATCCAACACAGATGGATGTAGTGAATGCTTTCCAGAGTGGA
AGTTCCATT CAGGGGGCTCTAAGGCGGCAACCCTCCATCGCCAGCCAGCATCATGATGTAACAAATATT
TCTACCCCTACACATGTAGTGTTCCTCTTCTACTGCTTCTACTACTGTGGGTATTTCGAGTGGTGAA
TGCATTTTCG

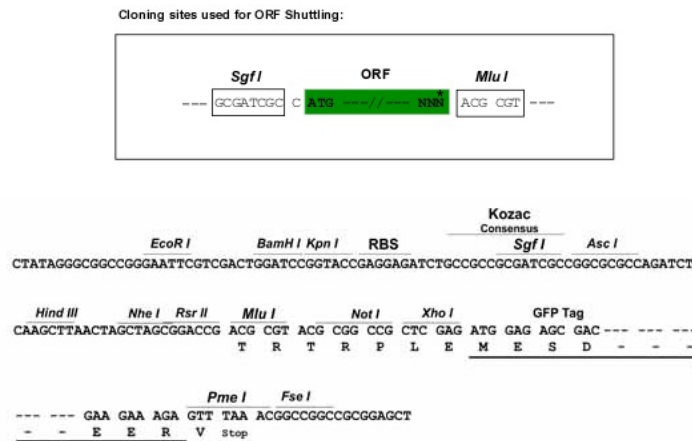
ACGCGTACGCGGCCGCTCGAG - GFP Tag - GTTTAAAC

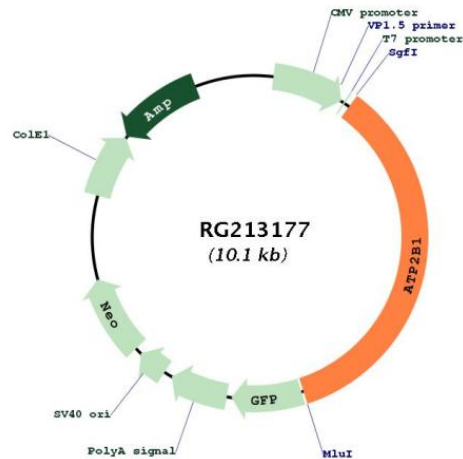
Protein Sequence: >Peptide sequence encoded by RG213177
 Blue=ORF Red=Cloning site Green=Tag(s)

MGDMANNSVAYSQVGNLKEANHDGDFGITLAELRALMELRSTDALRKIQESYGDVYIGICTLKTSPNE
 GLSGNPADLERREAVFGKNFIPPKPKTFLQLVWEALQDVTLLIILEIAAIVSLGLSFYQPPEGDNALCG
 EVSVGEEEGEGETGWIEGAAILLSVVCVVLVAFNDWSKEKQFRGLQSRIEQEKFVIRGGQVIQIPV
 ADITVGDIAQVKYGDLLPADGILLIQGNLKIDESSLTGESDHVKKSLDKDPLLLSGTHVMEGSGRMVVT
 AVGVNSQTGIIFTLGAGGEEEEKDEKKEKKNKQDGAIEENRKAQAQDGAAMEMQPLKSEEGDGD
 EKDKKKANLPKKEKSVLQGKLTCLAVQIGKAGLLMSAITVIIILVLYFVIDTFWVQKRPWLAECTPIYIQ
 YFVKFFIIGVTVLVAVPEGLPLAVTISLAYSVKMMKDNLLVRHLDACETMGNATAICSDKTGTLTMN
 RMTVVQAYINEKHYKVPPEAIPPNILSYLVTGISVNCAYSKILPPEKEGGLPRHVGNKTECALLGL
 LLDLKRQYQDVRNEIPEEALYKVTYFNSVRKSMSTVLKNSDGSYRIFSKGASEIILKCKFKILSANGEA
 KVFRPRDRDDIVKTVIEPMASEGLRTICLAFRDFPAGEPEPEWDNENDIVTGLTCIAVVGIEDPVRPEV
 PDAIKKQQRAGITVRMVTGDNINTARAIATKCGILHPGEDFLCLEGKDFNRRIRNEKGEIEQERIDKIW
 PKLRVLARSSPTDKHTLVKGIIDSTVSDQRQVAVTGDGTNDGPALKKADVGFAMGIAGTDVAKEASDI
 ILTDDNFTSIVKAVMWGRNVYDSISKFLQQLTVNVVAVIVAFGTACITQDSPLKAVQMLWNLIMDTL
 ASLALATEPPTESLLLRRKPYGRNKPLISRTMMKNILGHAFYQLVVVFTLLFAGEKFFDIDSGRNAPLHA
 PPSEHYTVFNTFVLMQLFNEINARKIHGERNVFEGIFNNAIFCTIVLGTFFVQIIIVQFGGKPFSCSE
 LSIEQWLWSIFLGMGTLLWGQLISTIPTSRKFLKEAGHTQKEEIPEEELAEDVEEIDHAERELRRGQ
 ILWFRGLNRIQTQMDVVNAFQSGSSIQALRRQPSIASQHHDVTNISTPTHVVFSSSTASTTVGYSSGE
 CIS
TRTRPLEMESDESGLPAMEIECRITGTLNGVEFELVGGEGTPEQGRMTNKMSTKGALTFSPYLLSHV
 MGYGFYHFGTYPSGYENPFLHAINNGGYTNTRIEKYEDGGVLHVSFSYRYEAGRVIGDFKVMGTGFPEP
 SVIFTDKIIRSNATVEHLHPMGDNDLDGSFTRTFLRDGGYSSVVD SHMHFKSAIHP SILQNGGPMFA
 FRRVEEDHSNTELGIVEYQHAFKTPDADAGEERV

Restriction Sites: SgfI-MluI

Cloning Scheme:



Plasmid Map:


ACCN: NM_001001323

ORF Size: 3528 bp

OTI Disclaimer: Due to the inherent nature of this plasmid, standard methods to replicate additional amounts of DNA in E. coli are highly likely to result in mutations and/or rearrangements. Therefore, OriGene does not guarantee the capability to replicate this plasmid DNA. Additional amounts of DNA can be purchased from OriGene with batch-specific, full-sequence verification at a reduced cost. Please contact our customer care team at custsupport@origene.com or by calling 301.340.3188 option 3 for pricing and delivery.

The molecular sequence of this clone aligns with the gene accession number as a point of reference only. However, individual transcript sequences of the same gene can differ through naturally occurring variations (e.g. polymorphisms), each with its own valid existence. This clone is substantially in agreement with the reference, but a complete review of all prevailing variants is recommended prior to use. [More info](#)

OTI Annotation: This clone was engineered to express the complete ORF with an expression tag. Expression varies depending on the nature of the gene.

Components: The ORF clone is ion-exchange column purified and shipped in a 2D barcoded Matrix tube containing 10ug of transfection-ready, dried plasmid DNA (reconstitute with 100 ul of water).

Reconstitution Method:

1. Centrifuge at 5,000xg for 5min.
2. Carefully open the tube and add 100ul of sterile water to dissolve the DNA.
3. Close the tube and incubate for 10 minutes at room temperature.
4. Briefly vortex the tube and then do a quick spin (less than 5000xg) to concentrate the liquid at the bottom.
5. Store the suspended plasmid at -20°C. The DNA is stable for at least one year from date of shipping when stored at -20°C.

RefSeq:	NM_001001323.2
RefSeq Size:	7121 bp
RefSeq ORF:	3531 bp
Locus ID:	490
UniProt ID:	P20020
Cytogenetics:	12q21.33
Protein Families:	Druggable Genome, Transmembrane
Protein Pathways:	Calcium signaling pathway
MW:	129.5 kDa
Gene Summary:	<p>The protein encoded by this gene belongs to the family of P-type primary ion transport ATPases characterized by the formation of an aspartyl phosphate intermediate during the reaction cycle. These enzymes remove bivalent calcium ions from eukaryotic cells against very large concentration gradients and play a critical role in intracellular calcium homeostasis. The mammalian plasma membrane calcium ATPase isoforms are encoded by at least four separate genes and the diversity of these enzymes is further increased by alternative splicing of transcripts. The expression of different isoforms and splice variants is regulated in a developmental, tissue- and cell type-specific manner, suggesting that these pumps are functionally adapted to the physiological needs of particular cells and tissues. This gene encodes the plasma membrane calcium ATPase isoform 1. Alternatively spliced transcript variants encoding different isoforms have been identified. [provided by RefSeq, Jul 2008]</p>