

Product datasheet for **RG213165**

CD8A (NM_171827) Human Tagged ORF Clone

Product data:

Product Type: Expression Plasmids
Product Name: CD8A (NM_171827) Human Tagged ORF Clone
Tag: TurboGFP
Symbol: CD8A
Synonyms: CD8; Leu2; p32
Mammalian Cell Selection: Neomycin
Vector: pCMV6-AC-GFP (PS100010)
E. coli Selection: Ampicillin (100 ug/mL)
ORF Nucleotide Sequence: >RG213165 representing NM_171827
Red=Cloning site Blue=ORF Green=Tags(s)

TTTTGTAATACGACTCACTATAGGGCGCCGGAATTCGTCGACTGGATCCGGTACCGAGGAGATCTGCC
GCC**CGATCGCC**

ATGGCCTTACCAGTGACCGCCTTGCTCCTGCCGCTGGCCTTGCTGCTCCACGCCAGGCCGAGCCAGT
TCCGGGTGTCGCCGCTGGATCGGACCTGGAACCTGGGCGAGACAGTGGAGCTGAAGTGCCAGGTGCTGCT
GTCCAACCGACGTCGGGCTGCTCGTGGCTCTTCCAGCCGCGCGCCGCCAGTCCCACCTTCCTC
CTATACCTCTCCAAAACAAGCCCAAGGCGGCCGAGGGGCTGGACACCCAGCGTTCTCGGCAAGAGGT
TGGGGACACCTTCGTCCTCACCTGAGCGACTCCGCCGAGAGAACGAGGGCTACTATTCTGCTCGGC
CCTGAGCAACTCCATCATGTACTTCAGCCACTTCGTGCCGGTCTTCTGCCAGCGAAGCCCACCAGCAGC
CCAGCGCCGCGACCACCAACACCGGCCGCCACCATCGCGTCGCAGCCCTGTCCCTGCGCCAGAGGCGT
GCCGCGCAGCGCGGGGGCGCAGGGAACCGAAGACGTGTTTGCAAATGTCCCGGCCTGTGGTCAAATC
GGGAGACAAGCCAGCCTTTCGGCGAGATACGTC

ACGCGTACGCGGCCGCTCGAG - GFP Tag - GTTTAA

Protein Sequence: >RG213165 representing NM_171827
Red=Cloning site Green=Tags(s)

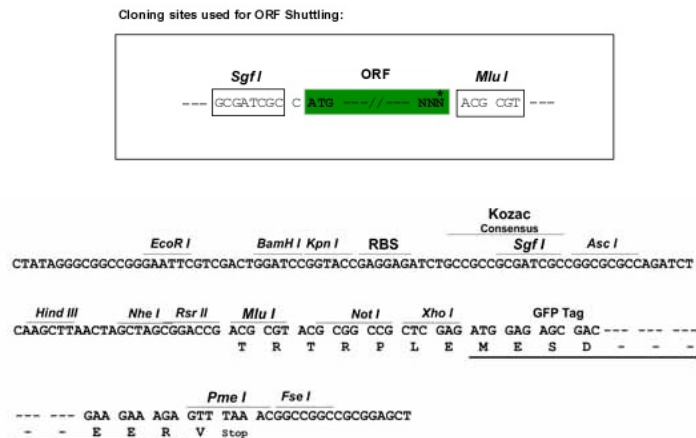
MALPVTALLLPLALLLHAARPSQFRVSPLDRTWNLGETVELKCQVLLSNPTSGCSWLFPQPRGAAASPTFL
LYLSQNKPKAAEGLDTRFSGKRLGDTFVLTLSDFRRENEGYFCSALSNSIMYFSHFVPVFLPAKPTTT
PAPRPPTPAPTIASQPLSLRPEACRPAAGGAGNRRRVCKCPRPVVKSGDKPSLSARYV

TRTRPLE - GFP Tag - V

Restriction Sites: Sgfl-MluI



[View online »](#)

Cloning Scheme:


ACCN: NM_171827

ORF Size: 594 bp

OTI Disclaimer: The molecular sequence of this clone aligns with the gene accession number as a point of reference only. However, individual transcript sequences of the same gene can differ through naturally occurring variations (e.g. polymorphisms), each with its own valid existence. This clone is substantially in agreement with the reference, but a complete review of all prevailing variants is recommended prior to use. [More info](#)

OTI Annotation: This clone was engineered to express the complete ORF with an expression tag. Expression varies depending on the nature of the gene.

Components: The ORF clone is ion-exchange column purified and shipped in a 2D barcoded Matrix tube containing 10ug of transfection-ready, dried plasmid DNA (reconstitute with 100 ul of water).

Reconstitution Method:

1. Centrifuge at 5,000xg for 5min.
2. Carefully open the tube and add 100ul of sterile water to dissolve the DNA.
3. Close the tube and incubate for 10 minutes at room temperature.
4. Briefly vortex the tube and then do a quick spin (less than 5000xg) to concentrate the liquid at the bottom.
5. Store the suspended plasmid at -20°C. The DNA is stable for at least one year from date of shipping when stored at -20°C.

RefSeq: [NM_171827.4](#)

RefSeq Size: 2150 bp

RefSeq ORF: 597 bp

Locus ID: 925

UniProt ID: [P01732](#)

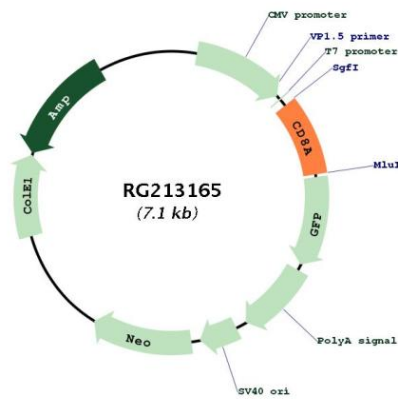
Cytogenetics: 2p11.2

Protein Families: Adult stem cells, Druggable Genome, ES Cell Differentiation/IPS, Secreted Protein, Transmembrane

Protein Pathways: Antigen processing and presentation, Cell adhesion molecules (CAMs), Hematopoietic cell lineage, Primary immunodeficiency, T cell receptor signaling pathway

Gene Summary: The CD8 antigen is a cell surface glycoprotein found on most cytotoxic T lymphocytes that mediates efficient cell-cell interactions within the immune system. The CD8 antigen acts as a coreceptor with the T-cell receptor on the T lymphocyte to recognize antigens displayed by an antigen presenting cell in the context of class I MHC molecules. The coreceptor functions as either a homodimer composed of two alpha chains or as a heterodimer composed of one alpha and one beta chain. Both alpha and beta chains share significant homology to immunoglobulin variable light chains. This gene encodes the CD8 alpha chain. Multiple transcript variants encoding different isoforms have been found for this gene. The major protein isoforms of this gene differ by the presence or absence of a transmembrane domain and thus differ in being a membrane-anchored or secreted protein. [provided by RefSeq, May 2020]

Product images:



Circular map for RG213165