

## Product datasheet for **RG213138**

### C20orf74 (RALGAPA2) (NM\_020343) Human Tagged ORF Clone

#### Product data:

Product Type:	Expression Plasmids
Product Name:	C20orf74 (RALGAPA2) (NM_020343) Human Tagged ORF Clone
Tag:	TurboGFP
Symbol:	RALGAPA2
Synonyms:	AS250; bA287B20.1; C20orf74; dj1049G11; dj1049G11.4; p220
Mammalian Cell Selection:	Neomycin
Vector:	pCMV6-AC-GFP (PS100010)
E. coli Selection:	Ampicillin (100 ug/mL)
ORF Nucleotide Sequence:	>RG213138 representing NM_020343 Red=Cloning site Blue=ORF Green=Tags(s)

TTTTGTAATACGACTCACTATAGGGCGGCCGGAATTCGTCGACTGGATCCGGTACCGAGGAGATCTGCC  
GCC**CGATCGCC**

ATGTTCTCCGAAGGAGCCACGGGGATGTGAAGAAGTCCACCCAGAAGGTGCTGGACCCGAAGAAGGACG  
TGCTGACCCGCTGAAGCACCTGCGGGCGCTGGATAATGTGGATGCAAATGATCTTAAGCAGTTTTT  
TGAGACCAACTATTCTCAGATAATTTTCATCTTCTATGAAAATTTATAGCACTGGAAAATAGTTTGAAA  
TTAAAAGGAATAATAAGTCACAAAGGGAGGAGCTGGACTCCATCCTCTTCTTTTTGAAAAATACTGC  
AGTTTCTACCTGAACGAATTTTCTTTCGATGGCATTACCAGAGTATAGGCTCAACTTTAAGAAGCTTCT  
ACACACTGGAAATCTATTAAGATAAGATGTGAAGGAATCAGGCTGTTTCTTCTGTGGCTCAAGCACTT  
CAGACAACTGTGCAGAAGAGCAGGTTCTGATTTTTGCTTGCTGGTGCCTGGTTCGCCAGCAGTCATGT  
CATCCAGGGGCCCTTGACACTGGAGACTCATCAATCCAGCCCTAGTGTAGCTGATGTAAGATATA  
TCCAGAAGAAATCACTCCACTCTACCAGCCATATCAGGGGAGAAGATTGCTGAGGACCAAACCTGCTTT  
TTCTTCAAATACTGTTGAAGTATATGTTATTCAGGCTGCGAGCTTGGAGTGGAAGAATAAGGAGAATC  
AAGATACTGGTTTTAAATTTCTTTTACATTGTTTCGAAAGTATTATCTTCTCATTATTTCCATCATT  
TACTAAGTTAACAAACATCTACAAACCTGTACTTGACATCCCCATTTGAGACCAAAGCCTGTGTACATT  
ACTACCCTCGAGACAATGAGAACATTTACAGTACAAAGATTCCATATATGGCAGCTCGTGTGTTTTTA  
TTAAGTGGATTGTAACCTTCTTTTTGGAAAAAAGTATCTAACTGCAACACAAAACACTAAAAATGGAGT  
TGATGTATTGCCTAAAATCATCCAGACTGTTGGTGGTGGTGTGTGTCAGGAGAGAGCGCCTGAGCTGGAT  
GGTGGTGGGCCACGGAGCAGGACAAAAGCCATTCTAACAGCAGCACCTTGTGCGACCGAAGACTCAGCA  
ACTCCAGCCTCTGTAGCATTGAAGAAGAGCACCGAATGGTGTATGAAATGGTACAGCGGATTCTCTTGTC  
AACACGAGGTTATGTCAACTTCGTGAATGAAGTATTTACCAGGCATTTTTGTTGCCTTCTGTGAGATA  
GCTGTAACAAGAAAAGTAGTTCAAGTGTACAGAAAGTGGATTCTCCAGGACAAACCTGTGTTTCATGGAGG  
AGCCAGATAGAAAAGATGTTGCCAAGAAGATGCTGAAAAATTAGGATTTTCCGAGACTGATAGCAAGGA  
GGCCTCATCTGAAAGTTCTGGTCATAAACGATCTCCAGTTGGGGACGCACATACTCTTACAAGTGCA



[View online »](#)

ATGAGCAGAGGGTGTGTGACAGAGGAGGAAAATACAAATGTGAAAGCCGGCGTCCAGGCTTTGTTGCAGG  
 TATTTTTGACGAACTCTGCAAACATCTTTTTGTTGGAACCATGTGCTGAAGTTCCCTGTGCTCTTGAAGA  
 ACAAGTTGATGCTTGAAAGCTGTTTTGATTATTTTTAGGCGCATGATAATGGAGCTTACAATGAATAAA  
 AAGACATGGGAACAGATGTTGCAAATACTACTCAGGATAACAGAAGCTGTGCATGCAGAAGCCAAAGGATA  
 AACAAATAAAGGACTTGTGGCCAGAGCTTGGCAGGGTACTATTTAGGACGCTCATGGTAGCTTGGAT  
 CCGAGCAAACCTCTGTGTGTACATTTCTCGAGAGCTCTGGGATGACTTTCTTGGTGTGCTGTCTCCCTC  
 ACGGAATGGGAGGAACCTATAAACGAGTGGGCCAACATTATGGACTCCTTGACAGCAGTCTTGAAGAA  
 CCGTTTTATGGAGTTGAGATGACAAACCTACCTCTGGATAAATTAAGTGAACAAAAGGAAAAGAACGACG  
 AGGCAAAGGCTGTGTTCTAGATCCTCAGAAAGGAACCACCGTGGGGAGGTCTTTTTCTCTCAGCTGGCGG  
 AGCCACCCAGATGTGACCGAACCGATGCGATTTAGGAGTGCCACCACGTCTGGAGCACGGGAGTGGAAA  
 AGGCAAGAAATATTGTTCCGCAAAAAGCAACTGAAGTGGAGGAGTGTCAACAGTCAGAAAATGCACCTGC  
 AGCCGGATCTGGCCATCTCACAGTGGGACAGCAGCAGGTCCTTCGGAGCAGCAGCACCTCCGACATC  
 CCCGAGCCGCTGTGCTCAGATTCTCTCAGGGTCAAAGGCAGAAAACACACAGAATTCGAGTTCTTCAG  
 AGCCTCAGCCTATTCAAGAGAATAAAGGACATGTGAAGAGAGAACATGAAGGAATAACAATCTTAGTTCCG  
 AAGAAGCAGCAGCCCTGTGAATTGGATTTGAAAGATGATTTGCAGCAGACACAAGGAAAATGTAGGGAA  
 AGACAGAAGAGTGAAGTACTAACAGTGACACAACCTCTGGGCTGTACCAATGAGGCAGAGCTGTCCATGG  
 GCCATGGCAGACCTGTGAGGAAGACCCAGAACTGAATACTCCACAGATGTTGTGGCTGATGCTGATGC  
 CCGTCAATGGTTACAACCTGAGTCCCACCGATGCTTCAAATTTAACAGATAGCAGCGAGTGCCTCACAGAT  
 GACTGTAGTATAATCGCCGGGGGAGCCTCACTGGTTGGCACCCAGACTCTGCTGCTGTGTTATGGCGAA  
 GGGTCTTGGGGATCCTCGGAGATGTGAATAACATCCAGTACCCCAAGATCCACGCCAGAGTTTTCTGCTA  
 TCTCTATGAACTCTGGTACAACCTAGCAAAGATACGGGATAATCTAGCAATAAGCCTGGATAACCACTCT  
 TCTCCATCTCCTCAGTTTTGATCCCACCACTCAGAATGTTTGCATCATGGCTGTTTAAAGCGCGCAGAC  
 TGCCAAATGAATAAAGGAAGGCAAACCTACAAGCCTACAGGCTGATCTGTGCCATGATGACCAAGCCCA  
 GGACGTTCTGCCAAACTCAGATTTCTGGTGCATTTTTACCTTGTGATGCACTGGGATTAACCGAGAG  
 GATCAGGATATCTTAAATACGATCATAAGGCACTGTCCACCCCGCTTTTTCTCCCTGGGTTTTCTGGCT  
 TCTCAATGCTGGTGGGGACTTCATCACGGCCGCTGCCAGGGTCTTAGCACAGACATTTGACGGCGCC  
 TCGTTCAGAGGCTGTCACTGTCTCGGCTCTCTGGTCTGCTTTCCAAATACCTACCAGGAGATTCCTTTA  
 CTGCAGTCAGTCCAGAAGTAAATGAGGCCATTACAGGAAGTGAAGATGTCAAGCATTACCTCATAAATA  
 TTTTACTGAAGAATGCCACAGAAGAACCAATGAATATGCAAGATGCATTGCTGTTTGTCCCTTGGGGT  
 CTGGATATGTGAAGAGCTTGACAGTGTACAAGCCACCCTCAGGTGAAAGAGGCCATCAATGTGATAGGA  
 GTAACCTGAAGTTTCCCAACAAAATCGTGGCCAGGTAGCTTGGCATGTCTTCAGTTGCTGGTTTCTCT  
 ACTGGGAGAAGCTTCAGATGTTTGAACCTCTCTGCCTCGGAAAATGGCAGAAAATCCTCGTGGCCACAGT  
 TGCTTTTCTTTTACCAAGTGCAGAGTACTCCTCAGTGGAAAACAGACAAGAAGTTTATTGTGCTCTTGCTA  
 CTCTGCCTCTTGGACTGGTGCATGGCATTGCCCGTGAAGTGTCTTCTCCACCCCGTGTCCACAGCAGTCC  
 TAGAGGAGCAGCATTCCGCCAGAGCCCCCTTGCTGGATTATATCTACAGGGTTTTGCACTGCTGTGTGTG  
 TGGCTCAAGCAGTACACCCAACAGAGTCACTACATACTGACCCTGGCTGACTTGTATCCACGGATTAT  
 GACCCCTCTGCCACTGGCAAATGTGAAGAGCTCTGAGCCAGTCCAGTATCATTATCAGCAGAATTGG  
 GTAACCTGCTGACTGTTGAAGAGGAGAAGAAGAGAAGAAGTTGGAGTTGATCCCTTTGACTGCTCGAAT  
 GGTGATGGCCACCTGGTGAACCACTGGGGCACTACCCCTCAGTGGGGCCCTGCCATACTGCACAGC  
 CTGTGACGCGAGAACCATGACAATGCCCATGTGGAAGGCTCCGAGCTGTCTTTGAGGTGTTGAGAAGTC  
 CAAACCTGCAGCTGTTTGTATTTAATGATAGCACCTCATCTCCTACCTCAGACACCCACAGAAGGACC  
 GGTAGGGGGATCACCAAGTGGGCTCTCTCTCTGATGTGAGAGTAATTGTGAGGGATATCTCAGGGAAGTAC  
 TCTTGGGATGGTAAGGTTTTATATGACCTTTGGAAGGCTGCTTAGCACCCAGTGGAAAGAAATCCTTCAT  
 TTCTGATTTGAGCTGGCATCGTGACACATTTGGACCTCAGAAAGACTCTTCTCAAGTTGAGGAGGGGA  
 TGATGTTCTTGACAAATACTTGAAAACATTGGCCATAACAAGTCTGAATGCCTTTTACCCTCACAGCTA  
 AATCTAAATGAACCTTCCCTAACCCATGTGGCATGAACTATGACCAAGAGAAGGAAATCATTGAGGTCA  
 TTTTGCGCCAAAATGCTCAAGAGGATGAGTATATCCAGAGTCATAACTTCGATTCTGCAATGAAAGTCA  
 CAGCCAAGGGCAGCCCTCCCAAGTGGAGCCCCAGGACCCTTTTATTTCTGCAGGTTATTGCTTGTGATGAC  
 TTGGGAATGAATCTTGGGACAGAAGGAAGAAATTTTATCTATTGAAGAAAATTCAAAATTTATTGAGAG  
 AGCTGAAAAATTTGGACTCCCGCAGTGGCGTGAGACACAAAAATCGCAGTGTGTTTACATTGCTGAAGG  
 TCAAGAAGACAAGTGTCAATCTCTCTAATGAAAGAGGAAGCCAAGCATATGAAGACTTTGTTGCTGGA  
 CTTGGATGGGAGGTGGATCTCTCCACCCACTGTGGTTTATGGGTGGCCTTCAGCGCAATGGCAGCACCC

GGCAGACGGCCCTTACTATGCTACCTCAACTGTGGAAGTGATTTTCATGTTTCCAACCTCGAATGCCGTC  
 AGACTCAGATGATTCCCTCACAAAAAGCTTCGCACTGGGGAATGACGAGGTCCATATCGTCTGGTCT  
 GAACACTCCAGAGACTACCGCAGGGTATTATCCCAACTGCCTTTGGAGATGTTTCAATCATTATTTACC  
 CAATGAAGAATCACATGTTCTTCATCGCGATAACGAAGAAACCTGAGGTTCCATTTTTGGGCCTCTGTT  
 TGATGGAGCCATAGTGAGTGGGAAGCTGCTGCCAAGCCTGTATGTGCCACGTGCATCAACGCCAGCAGG  
 GCTGTGAAGTGCCTCATCCCCTCTACCAGAGCTTCTATGAAGAGCGAGCTCTGTATCTCGAAGCAATAA  
 TTCAGAACCACCGGAAGTAATGACATTCGAGGATTTTCGAGCCCAAGTCTTTCTCCCTCTCCAGCTA  
 CTCCTCAGCGGAACGGAT

ACGCGTACGCGGCCGCTCGAG - GFP Tag - GTTTAA

**Protein Sequence:**

>RG213138 representing NM\_020343

Red=Cloning site Green=Tags(s)

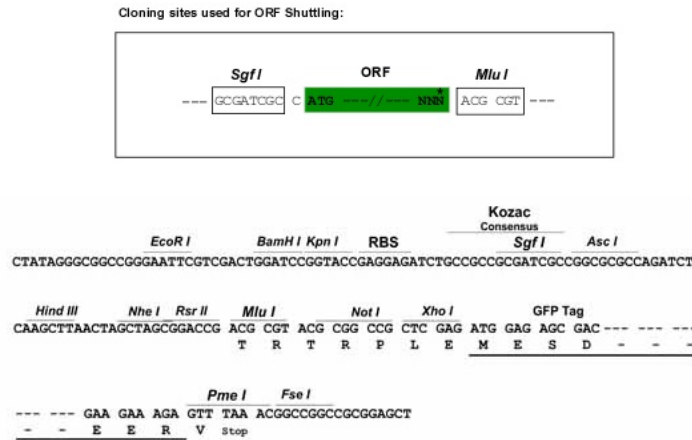
MFSRRSHGDVKKSTQKVLDPKKDVLTRLKHLRALLDNVDANDLKQFFETNYSQIYFIFYENFIALENSLK  
 LKGNKSQREELDSILFLFEKILQFLPERIFFRWHYQSIGSTLKKLLHTGNSIKIRCEGIRLFLWLQAL  
 QTNCAEEQVLIACLVPGFPAVMSRRPCTLETLINPSPSVADVKIYPEEITPLLPASGEKIAEDQTCF  
 FLQILLKYMVIQAASLEWKNKENQDTGFKFLFTLFRKYYPHLFSPSTKL TNIYKPVLDIPHLRPKPVYI  
 TTRDNENIYSTKIPYMAARVVF IKWIVTF FLEKKYL TATQNTKNGVDLPKIIQTVGGGAVQERAPELD  
 GGGPTEQDKSHSNSTLSDRRLSNSSLCSEEEHRMVYEMVQRILLSTRGYVNFVNEVFHQAFLLPSCFI  
 AVTRKVVQVYRKWILQDKPVFMEEPDRKDVAQEDAELKGFSETDSKEASSESSGHKRSSSWGRTYSFTSA  
 MSRGCVTEENTNVKAGVQALLQVFLTNSANIFLLEPCAIEVPVLLKEQVDACKAVLIIFRRMIMELTMNK  
 KTWEQMLQILLRITEAVMQPKDKQIKDLFAQSLAGLLFRTLMMVAVIRANLCVYISRELWDFLGLVSSL  
 TEWHEELINEWANIMDSL TAVLARTVYGVEMTNLPLDKLSEQKEKKQRGKGCVLDPQKGTTVGRSFLSWR  
 SHPDVTEPMRFRSATTSGAPGVEKARNIVRQKATEVEEQQSENAPAAGSGHLTVGQQQVLRSSSTSDI  
 PEPLCSDSSQGQKAENTQSSSSEPQPIQENKGHVKREHEGITILVRRSSSPAELDLKDDLQQTQGKRE  
 RQKSESTNSDRTLGTNEAELSMGPWQTCEDPELNTPTDVVADADARHWLQLSPTDASNL TDSSECLTD  
 DCSI IAGGSLTGWHPDAAVLWRRVLGILGDVNNIQSPKIHARVFCYL YELWYKLAKIRDNLAI SLDNQS  
 SPSPVLIIPPLRMFASWLFKAATLPNEYKEGKLQAYRLICAMMTRRQDVL PNSDFLVHFYLVMHGLTSE  
 DQDILNTIIRHCPPRFSLGFPGF SMLVGFITAAARVLSTDIL TAPRSEAVTVLGSVCFPNTYQEIPL  
 LQSVPEVNEAITGTEDVKHYLINILLKNATEEPNEYARCI AVCSLGVWICEELAQCTSHPVKAEAINVIG  
 VTLKFPNKIVAQVACDVLQLLVSYWEKLMFETSLPRKMAEILVATVAFLLPSAEYSSVETDKKFIVSLL  
 LCLLDWCALPVSVLLHPVSTAVLEEQHSARAPLLDYIYRVLHCCVCGSSTYTQQSHYILTLADLSTDY  
 DPFLPLANVKSSEPVQYHSSAELGNLLTVEEEKRRSLELIPLTARMVMAHLVNHLGHYPLSGGPAILHS  
 LVSENHDNAHVEGSELSFEVFRSPNLQLFVFNDSLISYLQTPTEGPGVGGSPVGSLS DVRVIVRDISGKY  
 SWDGKVL YGPLEGCLAPSGRNPSFLISSWHRDTFGPQKDSQVEEGDDVLDKLENIIGHTSPECLLPSQL  
 NLNEPSLTPCGMNYDQEKEIEVILRQNAQEDEYIQSHNFDSAMKVTSQGQSPVPRGPFYFCRLLDD  
 LGMNSWDRRKNFHLLKNSKLLRELKNLDSRQCRETHKIAVFYIAEGQEDKCSILSNERGSQAYEDFVAG  
 LGWEVDLSTHCGFMGGLQRNGSTGQTAPYYATSTVEVIFHVSTRMPSDSDSLTKKLRHLGNDEVHIVWS  
 EHSRDYRRGIIPAFGDVSI IYPMKNHMFIAITKKPEVPFFGPLFDGAI VSGKLLPSLVCATCINASR  
 AVKCLIPLYQSFYEERALLYEAI IQNHREVMTFEDFAAQVFSPPSYSLSGTD

TRTRPLE - GFP Tag - V

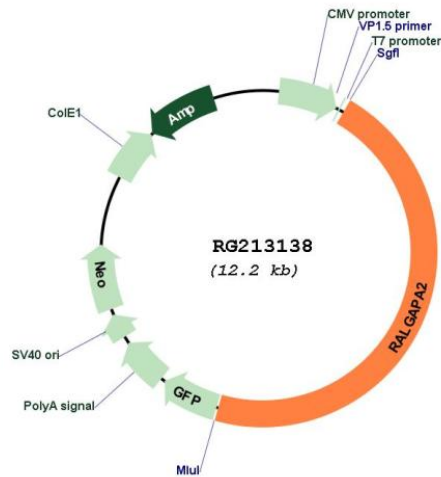
**Restriction Sites:**

SgfI-MluI

Cloning Scheme:



Plasmid Map:



ACCN: NM\_020343  
 ORF Size: 5619 bp

**OTI Disclaimer:** Due to the inherent nature of this plasmid, standard methods to replicate additional amounts of DNA in E. coli are highly likely to result in mutations and/or rearrangements. Therefore, OriGene does not guarantee the capability to replicate this plasmid DNA. Additional amounts of DNA can be purchased from OriGene with batch-specific, full-sequence verification at a reduced cost. Please contact our customer care team at [custsupport@origene.com](mailto:custsupport@origene.com) or by calling 301.340.3188 option 3 for pricing and delivery.

The molecular sequence of this clone aligns with the gene accession number as a point of reference only. However, individual transcript sequences of the same gene can differ through naturally occurring variations (e.g. polymorphisms), each with its own valid existence. This clone is substantially in agreement with the reference, but a complete review of all prevailing variants is recommended prior to use. [More info](#)

**OTI Annotation:** This clone was engineered to express the complete ORF with an expression tag. Expression varies depending on the nature of the gene.

**Components:** The ORF clone is ion-exchange column purified and shipped in a 2D barcoded Matrix tube containing 10ug of transfection-ready, dried plasmid DNA (reconstitute with 100 ul of water).

**Reconstitution Method:**

1. Centrifuge at 5,000xg for 5min.
2. Carefully open the tube and add 100ul of sterile water to dissolve the DNA.
3. Close the tube and incubate for 10 minutes at room temperature.
4. Briefly vortex the tube and then do a quick spin (less than 5000xg) to concentrate the liquid at the bottom.
5. Store the suspended plasmid at -20°C. The DNA is stable for at least one year from date of shipping when stored at -20°C.

**RefSeq:** [NM\\_020343.1](#), [NP\\_065076.1](#)

**RefSeq Size:** 5628 bp

**RefSeq ORF:** 5622 bp

**Locus ID:** 57186

**UniProt ID:** [Q2PPJ7](#)

**Cytogenetics:** 20p11.23

**Gene Summary:** Catalytic subunit of the heterodimeric RalGAP2 complex which acts as a GTPase activator for the Ras-like small GTPases RALA and RALB.[UniProtKB/Swiss-Prot Function]