

## Product datasheet for **RG213126**

### **PTPRN2 (NM\_130842) Human Tagged ORF Clone**

#### **Product data:**

Product Type:	Expression Plasmids
Product Name:	PTPRN2 (NM_130842) Human Tagged ORF Clone
Tag:	TurboGFP
Symbol:	PTPRN2
Synonyms:	IA-2beta; IAR; ICAAR; PTPRP; R-PTP-N2
Mammalian Cell Selection:	Neomycin
Vector:	pCMV6-AC-GFP (PS100010)
E. coli Selection:	Ampicillin (100 ug/mL)



[View online »](#)

**ORF Nucleotide Sequence:**

>RG213126 representing NM\_130842  
 Red=Cloning site Blue=ORF Green=Tags(s)

TTTTGTAATACGACTCACTATAGGGCGGCCGGGAATTCGTCGACTGGATCCGGTACCGAGGAGATCTGCC  
 GCC**CGGATCGCC**

ATGGGGCCGCGCTCCCCTGCTGCTGCTACTGCTGCTGCTGCCGCCACGCGTCTGCCTGCCGCC  
 CTTTCGTCCTGCCCGCGCCGCGCAGCTCCCGGGCGTCTGGATGGAGTGTGGAAAGTCCAGAAAGT  
 TCCGGCAATGGACTTTTACCGCTACGAGGTGTCGCCCGTGGCCCTGCAGCGCCTGCGCGTGGCGTTGCAG  
 AAGCTTTCCGGCACAGGTTTACGTTGGCAGGATGACTATACTCAGTATGTGATGGACCAGGAACCTGCAG  
 ACCTCCCGAAAACCTACCTGAGGCGTCTGAAGCATCCAGCCAGCCAGGCCCTCAAACACAGCGTTGG  
 CAGCGAGAGGAGGTACAGTCGGGAGGGCGGTGCTGCCCTGGCCAACGCCCTCCGACGCCACCTGCCCTTC  
 CTGGAGGCCCTGTCCAGGCCCCAGCCTCAGACGTGCTCGCCAGGACCCATACGGCGCAGGACAGACCCC  
 CCGCTGAGGGTGTGACCGCTTCTCCGAGAGCATCCTGACCTATGTGGCCACACGTCTGCGCTGACCTA  
 CCCTCCCGGGCCCGGACCCAGTCCGCGAGGACCTCCTGCCCGGACCCCTCGGCCAGCTCCAGCCAGAT  
 GAGCTCAGCCCTAAGGTGGACAGTGGTGTGGACAGACACCATCTGATGGCGGCCCTCAGTGCCTATGCTG  
 CCCAGAGGCCCCAGCTCCCCCGGGGAGGGCAGCCTGGAGCCACAGTACCTTCTGCGTGCACCCCTCAAG  
 AATGCCAGGCGCTTGTGGCACCAGCCGCCCCCGAAGTGGCCTTACCTCTGGGAGATTCCGAAGAC  
 CCCTCTAGCACAGGCGATGGAGCACGGATTACACCTCCTGAAGGACCTGCAGAGGCAGCCGGCTGAGG  
 TGAGGGGCGTGAATGGCTGGAGCTGGACGGCATGGCCGAGTGTGGCTGGCCTGATGCAAGGCGTGGAA  
 CCATGGAGTAGCTCGAGGACGCCCTGGGAGAGCGGCCCTGGGAGAGTCTGGAGAACAGGCGGATGGCCCC  
 AAGGCCACCTCCGTGGAGACAGCTTCCAGATGACGGAGTGCAGGACGACGATGATAGACTTTACCAAG  
 AGTCCATCGTCTGAGTGCACACTCGGGGGCTCCTGCAGGACCAGGGTCTCGACTTTACCTGAGGC  
 CCTCCCTTTGCAAGGCCCTCGACATGGAGAGGAAGAAGTCCGAGCACCCCTGAGTCTTCCCTGTCTTCA  
 GAAGAGGAGACTGCCGGAGTGGAGAACGTCAAGAGCCAGACGTATTCAAAGATCTGCTGGGGCAGCAGC  
 CGCATTCCGAGGCCGGGGCGCTGCGTTTGGGAGCTCCAAAACAGATGCCTGGGCCCTCGAAGGAGGA  
 GCAGAGCCTTCCAGCGGGTGTCTCAGGAGCCCTCAGCGACGGCCTGCAATTGGAGGTCCAGCCTTCCGAG  
 GAAGAGGCGCGGGGTACATCGTGACAGACAGAGACCCCTGCGCCCGAGGAAGGAAGGCGGCTGGTGG  
 AGGACGTGCCCCCTCCTGCAGGTGCCAGCAGTGCCTGCGTACGTGGAGGTTCTCGGACCAGCAGT  
 GACCTTCAAAGTGAAGCCCAATGTCAAACGTGACCACTGAGGATGTGGAGAAGGCCACAGTTGACAAC  
 AAAGACAACTGGAGAAACCTCTGGACTGAAAATTTCTCAAACCGGAGTCCGGTCCGAAAAGCAAACCTCA  
 AGTTCTCCTCCTCAGGCGGAGCAAGAAGACTCCACCAAGTTTATCGCGCTCACCTGGTCTCCCTCGC  
 CTGCATCCTGGGCGTCTCCTGGCCTCTGGCCTCATCTACTGCCTCCGCCATAGCTCTCAGCACAGGCTG  
 AAGGAGAAGTCTCGGGACTAGGGGGCGACCCAGGTGCAGATGCCACTGCCGCTACCAGGAGCTGTGCC  
 GCCAGCGTATGGCCACGCGGCCACCAGACCCGACTGAGGGCCCGCACACGTACAGCATCAGCAGCGTCTC  
 ATCCCAGTTCAGCGACGGGCCGATCCCCAGCCCTCCGCACGCAGCAGCGCCTCATCCTGGTCCGAGGAG  
 CCTGTGCAGTCCAACATGGACATCTCCACCGGCCACATGATCCTGTCCTACATGGAGGACCACCTGAAGA  
 ACAAGAACCGCTGGAGAAGGAGTGGGAAGCGCTGTGCGCCTACCAGGCGGAGCCCAACAGCTCGTTTCT  
 GGCCAGAGGGGAGGAGAACGTGCCAAGAACCCTCCCTGGCTGTGCTGACCTATGACCACTCCCGGGTCT  
 CTGCTGAAGGCGGAGAACAGCCACAGCCACTCAGACTACATCAACGCTAGCCCCATCATGGATCAGGACC  
 CGAGGAACCCCGGTACATCGCCACCCAGGACCGCTGCCCGCCACCGTGGCTGACTTTTGGCAGATGGT  
 GTGGGAGAGCGGCTGCGTGGTATCGTCAATGCTGACACCCTCGCGGAGAACGGCGTCCGGCAGTGTAC  
 CACTACTGGCCGATGAAGGCTCCAATCTTACCACATCTATGAGGTGAACCTGGTCTCCGAGCACATCT  
 GGTGTGAGGACTTCTGGTGGAGGCTTCTATCTGAAGAACCTGCAGACCAACGAGACGCGCACCGTAC  
 GCAGTTCCACTTCTGAGTTGGTATGACCGAGGAGTCCCTTCTCCTCAAGGTCCCTCTGGACTCCGC  
 AGAAAAGTAAACAAGTGTACAGGGGCCGTTCTGTCCAATAATTGTTTCATTGCAGTGACGGTGCAGGCC  
 GGAGCGCACCTACGTCCTGATCGACATGTTCTCAACAAGATGGCCAAAGGTGCTAAAGAGATTGATAT  
 CGCAGCGACCTGGAGCACTTGGGGACCAGAGACCCGGCATGGTCCAGACGAAGGAGCAGTTTGTAGTTC  
 CGCTGACAGCCGTGGTGGAGGAGTGAACGCCATCCTCAAGGCCCTTCCCCAG

AG**CGGACCG**ACGCGTACGCGGCCGCTCGAG - GFP Tag - GTTTAA

Protein Sequence: >RG213126 representing NM\_130842  
 Red=Cloning site Green=Tags(s)

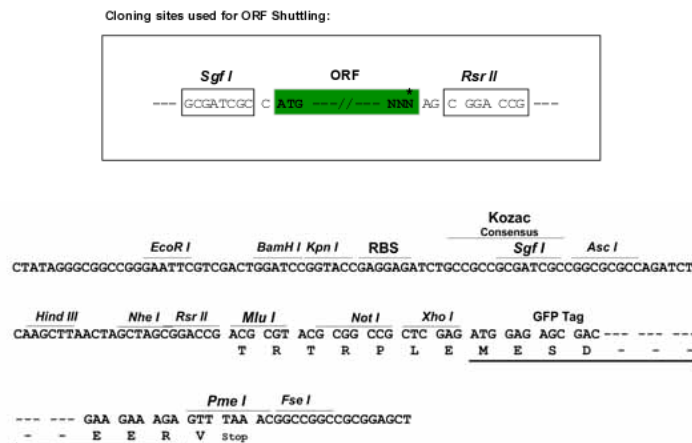
MGPPLPLLLLLLLLLPPRVLPAAPSSVPRGRQLPGRLDGVFGRCQKVPAMDFYRYEVSPVALQRLRVALQ  
 KLSGTGFTWQDDYTQYVMDQELADLPKTYLRRPEASSPARPSKHVSGSERRYSREGGAALANALRRHLPF  
 LEALSQAPASDVLARTHTAQRPPAEGDDRFSE SILTYVAHTSALTYPPGPRTQLREDLLPRTLGLQLQPD  
 ELSPKVD SGVDRHHLMAAL SAYAAQRPPAPPGEGLSELPQYLLRAPS RMP RPL LAPAAPQK WPSPLG DSED  
 PSSTGDGARIHTLLKDLQRQPAEVRGLNGL EL DGM AELMAGLMQGV D HGVARGSPGRAALGESGEQADGP  
 KATLRGDSFPDDGVQDDDDRLYQEVHRLSATLGGLLQDHGSRLLPGALPFARPLDMERKKSEHPESLSS  
 EEETAGVENVKSQTYSKDLLGQQPHSEPGAAAFGELQNQMPGPSKEEQSLPAGAQEALSDGLQLEVQPSE  
 EEARGYIVTDRDPLRPEEGRRLVEDVARLLQVPSSAFADVEVLGPAVTFKYSANVQNVTTEDVEKATVDN  
 KDKLEETSGLKILQTVGSGSKLKLFPQAEQEDSTKFIALTLVSLACILGVLLASGLIYCLRHSSQHRL  
 KEKLSGLGGDPGADATAAYQELCRQRMATRPDRPEGPHTSRISVSSQFSDGP I P S P S A R S S A S S W S E E  
 PVQSNMDISTGHMILSYMEDHLKNKNRLEKEWEALCAYQAEPNSSFVAQREENVPKNRSLAVLTYDHSRV  
 LLKAENSHSHSDYINASPIMDHDPRNPAYIATQGPLPATVADFWQMVWESGCVVI VML T P L A E N G V R Q C Y  
 HYWPDEGSNLYHIYEVNLYSEHIWCEDFLVRSFYLNKLQTNETRTVTQFHFLSWYDRGVPSSSRSLDLFR  
 RKVNKCYRGRSCPIIVHCSGDGAGRSQTYVYLIDMVLNKMMAKGAKEIDIAATLEHLRDQRPQGMVQTKQEF  
 ALTAVAEVNAILKALPQ

SGPTRRRLE - GFP Tag - V

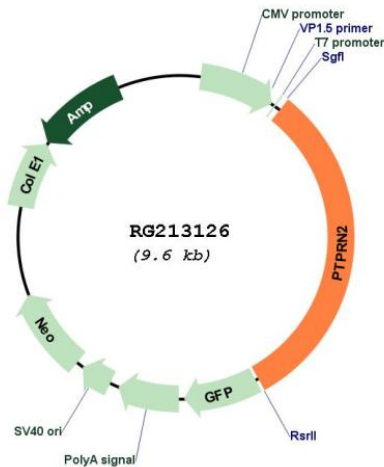
Restriction Sites:

SgfI-RsrII

Cloning Scheme:



## Plasmid Map:



**ACCN:** NM\_130842

**ORF Size:** 2994 bp

**OTI Disclaimer:** The molecular sequence of this clone aligns with the gene accession number as a point of reference only. However, individual transcript sequences of the same gene can differ through naturally occurring variations (e.g. polymorphisms), each with its own valid existence. This clone is substantially in agreement with the reference, but a complete review of all prevailing variants is recommended prior to use. [More info](#)

**OTI Annotation:** This clone was engineered to express the complete ORF with an expression tag. Expression varies depending on the nature of the gene.

**Components:** The ORF clone is ion-exchange column purified and shipped in a 2D barcoded Matrix tube containing 10ug of transfection-ready, dried plasmid DNA (reconstitute with 100 ul of water).

**Reconstitution Method:**

1. Centrifuge at 5,000xg for 5min.
2. Carefully open the tube and add 100ul of sterile water to dissolve the DNA.
3. Close the tube and incubate for 10 minutes at room temperature.
4. Briefly vortex the tube and then do a quick spin (less than 5000xg) to concentrate the liquid at the bottom.
5. Store the suspended plasmid at -20°C. The DNA is stable for at least one year from date of shipping when stored at -20°C.

**RefSeq:** [NM\\_130842.1](#), [NP\\_570857.1](#)

**RefSeq Size:** 4716 bp

**RefSeq ORF:** 2997 bp

**Locus ID:** 5799

**UniProt ID:** [Q92932](#)

**Cytogenetics:** 7q36.3

<b>Domains:</b>	Y_phosphatase, PTPc_motif
<b>Protein Families:</b>	Druggable Genome, Phosphatase
<b>Protein Pathways:</b>	Type I diabetes mellitus
<b>Gene Summary:</b>	<p>This gene encodes a protein with sequence similarity to receptor-like protein tyrosine phosphatases. However, tyrosine phosphatase activity has not been experimentally validated for this protein. Studies of the rat ortholog suggest that the encoded protein may instead function as a phosphatidylinositol phosphatase with the ability to dephosphorylate phosphatidylinositol 3-phosphate and phosphatidylinositol 4,5-diphosphate, and this function may be involved in the regulation of insulin secretion. This protein has been identified as an autoantigen in insulin-dependent diabetes mellitus. Alternative splicing results in multiple transcript variants. [provided by RefSeq, Feb 2015]</p>