

Product datasheet for **RG213125**

BSND (NM_057176) Human Tagged ORF Clone

Product data:

Product Type:	Expression Plasmids
Product Name:	BSND (NM_057176) Human Tagged ORF Clone
Tag:	TurboGFP
Symbol:	BSND
Synonyms:	BART; DFN73
Mammalian Cell Selection:	Neomycin
Vector:	pCMV6-AC-GFP (PS100010)
E. coli Selection:	Ampicillin (100 ug/mL)
ORF Nucleotide Sequence:	>RG213125 representing NM_057176 Red=Cloning site Blue=ORF Green=Tags(s)

TTTTGTAATACGACTCACTATAGGGCGGCCGGAATTCGTCGACTGGATCCGGTACCGAGGAGATCTGCC
GCC**CGATCGCC**

ATGGCTGACGAGAAGACCTTCCGGATCGGCTTCATTGTGCTGGGGCTTTTCCTGCTGGCCCTCGGTACGT
TCCTCATGAGCCATGATCGGCCCCAGGTCTACGGCACCTTCTATGCCATGGGCAGCGTCATGGTATCGG
GGGCATCATCTGGAGCATGTGCCAGTGCTACCCCAAGATCACCTTCGTCCTGCTGACTCTGACTTTCAA
GGCATCCTCTCCCAAAGGCCATGGCCCTGCTGGAGAATGGCTTGTGCCGAGATGAAGAGCCCCAGTC
CCCAGCCGCCCTATGTAAGGCTGTGGGAGGAAGCCGCTATGACCAGAGCCTGCCTGACTTCAGCCACAT
CCAGATGAAAGTCATGAGCTACAGTGAGGACCACCGCTCCTTGCTGGCCCTGAGATGGGGCAGCCGAAG
CTGGGAACCAGTGATGGAGGAGAAGGTGGCCCTGGCGACGTTTCAGGCCTGGATGGAGGCTGCCGTGGTCA
TCCACAAGGGCTCAGACGAGAGTGAAGGGGAAAGACGCCTAACTCAGAGCTGGCCCGCCCCCTGGCCTG
TCCCCAGGGCCCTGCCCCCTTGGCTTCTTCCAAGATGACCTGGACATGGACTCCAGTGAAGGCAGCAGC
CCCAATGCATCTCCATGACAGGGAGGAAGCTTGTCCCCACAACAGGAACCTCAGGGCTGCAGGTGCC
CGCTGGACCGCTTCCAAGACTTTGCCCTGATTGATGCCCAACGTTGGAGGATGAGCCCCAAGAGGGGCA
GCAGTGGGAAATAGCCCTGCCCAACAACGGCAGCGGTACCCAAGGACAAAGGTGGAGGAGAAGGAGGCT
TCGGACACAGGTGGGAGGAACCTGAGAAGGAAGAGGAAGACCTGACTATGGCTGCCAGATGGAGCCG
GGGACCTCTCCCGACAAGGAGCTGGGTTTTGAGCCTGACACCCAAGGC

ACGCGTACGCGGCCGCTCGAG - GFP Tag - GTTTAA



[View online »](#)

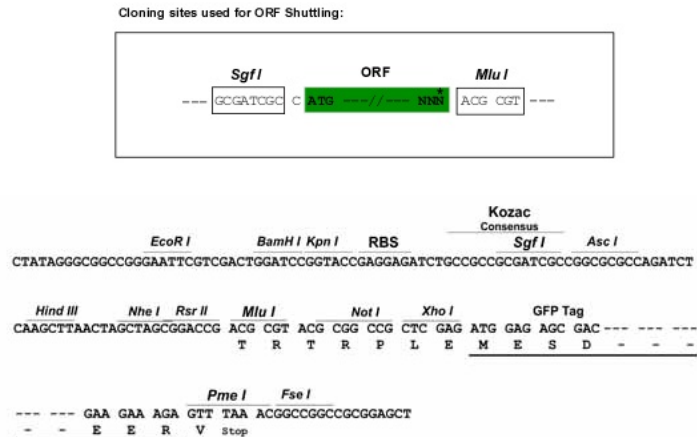
Protein Sequence: >RG213125 representing NM_057176
Red=Cloning site Green=Tags(s)

```
MADEKTRIGFIVLGLFLLALGTFLMSHDRPQVYGTFFYAMGSVMVIGGIWSMCQCYPKITFVPADSDFQ
GILSPKAMGLLENGLAEMKSPSPQPPYVRLWEEAAYDQSLPDFSHIQMKVMSYSEDHRSLLAPEMGQPK
LGTSDDGGEGGPDVQAWMEAAVVIIHKGSDESEGERRLTQSWPGLACQPQPAPLASFQDDLDMDSSEGSS
PNASPHDREEACSPQEQPQGCRCPLDRFQDFALIDAPTLDEPQEQQWEIALPNNWQRYPRTKVEEKEA
SDTGEEPEKEEEDLYGLPDGAGDLLPKELGFEPDTQG
```

TRTRPLE - GFP Tag - V

Restriction Sites: SgfI-MluI

Cloning Scheme:



Reconstitution Method:

1. Centrifuge at 5,000xg for 5min.
2. Carefully open the tube and add 100ul of sterile water to dissolve the DNA.
3. Close the tube and incubate for 10 minutes at room temperature.
4. Briefly vortex the tube and then do a quick spin (less than 5000xg) to concentrate the liquid at the bottom.
5. Store the suspended plasmid at -20°C. The DNA is stable for at least one year from date of shipping when stored at -20°C.

RefSeq: [NM_057176.3](#)

RefSeq Size: 1396 bp

RefSeq ORF: 963 bp

Locus ID: 7809

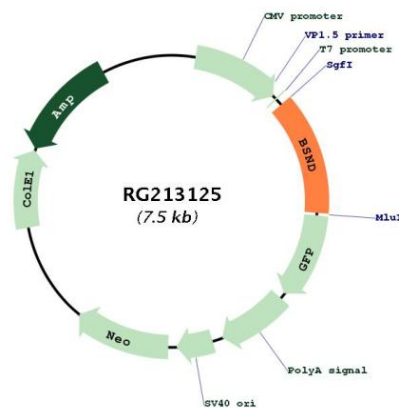
UniProt ID: [Q8WZ55](#)

Cytogenetics: 1p32.3

Protein Families: Druggable Genome, Transmembrane

Gene Summary: This gene encodes an essential beta subunit for CLC chloride channels. These heteromeric channels localize to basolateral membranes of renal tubules and of potassium-secreting epithelia of the inner ear. Mutations in this gene have been associated with Bartter syndrome with sensorineural deafness. [provided by RefSeq, Jul 2008]

Product images:



Circular map for RG213125