

Product datasheet for **RG213087**

KLF14 (NM_138693) Human Tagged ORF Clone

Product data:

Product Type: Expression Plasmids
 Product Name: KLF14 (NM_138693) Human Tagged ORF Clone
 Tag: TurboGFP
 Symbol: KLF14
 Synonyms: BTEB5
 Mammalian Cell Selection: Neomycin
 Vector: pCMV6-AC-GFP (PS100010)
 E. coli Selection: Ampicillin (100 ug/mL)
 ORF Nucleotide Sequence: >RG213087 representing NM_138693
 Red=Cloning site Blue=ORF Green=Tags(s)

TTTTGTAATACGACTCACTATAGGGCGGCCGGAATTCGTCGACTGGATCCGGTACCGAGGAGATCTGCC
 GCC**CGATCGCC**

ATGTCGGCCGCGTGGCGTGCCTGGACTACTTCGCCGCCGAGTGCCTGGTGTCCATGTCCGCGGGCGCCG
 TGGTTCACCGCCCGCCGCGGACCCCGAGGGCGCGGGTGGAGCCGACGGCTCGGAGGTGGGTGCGGCGCA
 TCCGGAGTCCGCTCTGCCGGTCCGGGGCCATCGGGGCCCGCTCGGTCCCCAGCTCCCGCAGGTCCCC
 GCCCCAGCCCCGCGCGGGCGGCCGCCGCCACCTGCTGGTGAAGCGTCTGGGCGGACTTGC
 GCAGCTCTGGCGAGGGCTCCTGGGAGAACTCGGGGAAGCTCCACGCGCCTCGTCCGGCTTCTCCGACCC
 GATCCCGTGTCCGTCCAGACCCCGTGTCCGAGCTGGCTCCCGCCTCCGGCGCCCGGGCGTCTGC
 CCCGAGAGCTCCTCCGATGCGCCCGCGTCCCAAGCGCGCTGCTGCCCGGGCGCACACGACGCTCTG
 GTGGTCTCTGGAGGGCCCTAGGGGCAGGCCCGCCCGCCCGCGGATCAGGCGCCCGGAGGAGGTC
 TGTACACCTGTGCCAAGCGCCACCAATGCCCTTCCCGGGTGCACCAAGGCTATTACAAGTCGTCG
 CACCTCAAGTCCCACGACGCCACACCGGTGAGCGCCCTTCTCCTGCGACTGGCTCGACTGCGACA
 AGAAGTTACGCGTCCGACGAGCTGGCCCGCCACTACAGGACGCACACGGGCGAGAAGCGCTTCTCCTG
 CCCCTCTGCCCAAGCAGTTCTCCGGAGCGACCACTGACCAAGCATGCTCGCCGCCACCAACCTAT
 CATCCAGATATGATCGAGTACCGGGGACGTCGTCGAACTCCCCGCATCGACCCGCACTCACCAGCGAGG
 TGGAAAGCTCCGCTCCGGTCCGGTCCCGGCCCGCGCCAGCTTACCACCTGCCTG

AGCGGACCGACGCGTACGCGGCCGCTCGAG - GFP Tag - GTTTAA



[View online »](#)

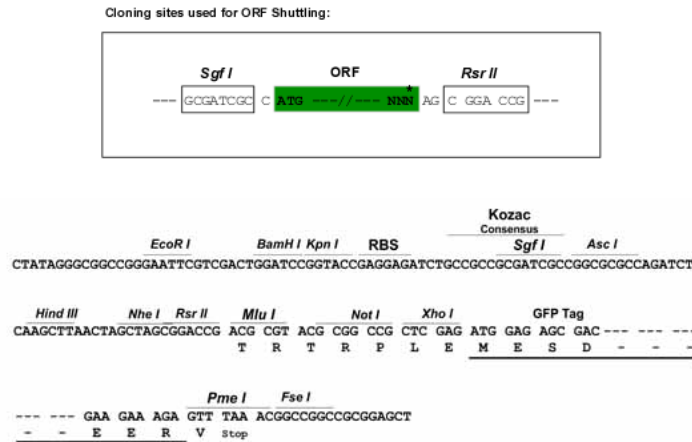
Protein Sequence: >RG213087 representing NM_138693
Red=Cloning site Green=Tags(s)

MSAAVACLDYFAAECLVSMAGAVVHRRPPDPEGAGGAAGSEVGAHPESALPGPGSPGASVPQLPQVP
 APSPGAGGAAPHLLAASVWADLRGSSGEGSWENSGEAPRASSGFSDP IPCSVQTPCSELAPASGAAAVCA
 PESSSDAPAVPSAPAAPGAPAASGGFSGGALGAGPAPAADQAPRRRSVTPAAKRHQCPFGCTKAYYKSS
 HLKSHQRTHTGERPFSCDWLDCDKKFTRSEDLARHYRHTHTGEKRFSCPLCPKQFSRSDHLTKHARRHPTY
 HPDMIEYRGRRTPRIDPPLTSEVESSASGSGPGPAPSF TTCL

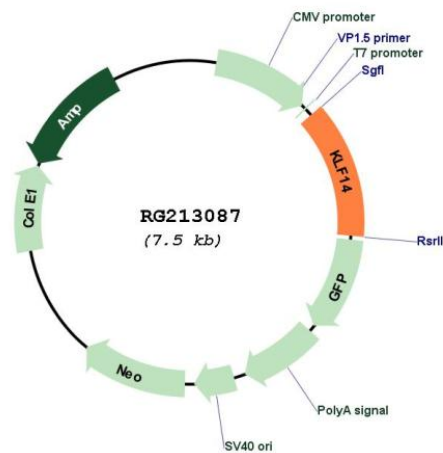
SGPTRTRRLE - GFP Tag - V

Restriction Sites: SgfI-RsrII

Cloning Scheme:



Plasmid Map:



ACCN: NM_138693

ORF Size: 969 bp

OTI Disclaimer:	The molecular sequence of this clone aligns with the gene accession number as a point of reference only. However, individual transcript sequences of the same gene can differ through naturally occurring variations (e.g. polymorphisms), each with its own valid existence. This clone is substantially in agreement with the reference, but a complete review of all prevailing variants is recommended prior to use. More info
OTI Annotation:	This clone was engineered to express the complete ORF with an expression tag. Expression varies depending on the nature of the gene.
Components:	The ORF clone is ion-exchange column purified and shipped in a 2D barcoded Matrix tube containing 10ug of transfection-ready, dried plasmid DNA (reconstitute with 100 ul of water).
Reconstitution Method:	<ol style="list-style-type: none">1. Centrifuge at 5,000xg for 5min.2. Carefully open the tube and add 100ul of sterile water to dissolve the DNA.3. Close the tube and incubate for 10 minutes at room temperature.4. Briefly vortex the tube and then do a quick spin (less than 5000xg) to concentrate the liquid at the bottom.5. Store the suspended plasmid at -20°C. The DNA is stable for at least one year from date of shipping when stored at -20°C.
RefSeq:	NM_138693.2
RefSeq Size:	1383 bp
RefSeq ORF:	972 bp
Locus ID:	136259
UniProt ID:	Q8TD94
Cytogenetics:	7q32.2
Gene Summary:	This intronless gene encodes a member of the Kruppel-like family of transcription factors. The encoded protein functions as a transcriptional co-repressor, and is induced by transforming growth factor-beta (TGF-beta) to repress TGF-beta receptor II gene expression. This gene exhibits imprinted expression from the maternal allele in embryonic and extra-embryonic tissues. [provided by RefSeq, Jul 2013]