

Product datasheet for **RG213025**

SRD5A2 (NM_000348) Human Tagged ORF Clone

Product data:

Product Type: Expression Plasmids
Product Name: SRD5A2 (NM_000348) Human Tagged ORF Clone
Tag: TurboGFP
Symbol: SRD5A2
Mammalian Cell Selection: Neomycin
Vector: pCMV6-AC-GFP (PS100010)
E. coli Selection: Ampicillin (100 ug/mL)
ORF Nucleotide Sequence: >RG213025 representing NM_000348
 Red=Cloning site Blue=ORF Green=Tags(s)

TTTTGTAATACGACTCACTATAGGGCGGCCGGAATTCGTCGACTGGATCCGGTACCGAGGAGATCTGCC
 GCC**CGATCGCC**

ATGCAGGTTCACTGCCAGCAGAGCCCAGTGCTGGCAGGCAGGCCACTTTGGTCGCCCTTGGGGCACTGG
 CCTTGTACGTCGGAAGCCCTCCGGCTACGGGAAGCACACGGAGAGCCTGAAGCCGGCGGCTACCCGCCT
 GCCAGCCCGCGCCGCTGGTTCCTGCAGGAGCTGCCTTCCTTCGCGGTGCCCGCGGGGATCTCGCCCGG
 CAGCCCCCTCCCTCTTCGGGCCACCTGGGACGGTACTTCTGGCCTCTCTGCCTACATTACTTCCACA
 GGACATTTGTACTCACTGCTCAATCGAGGGAGGCCTTATCCAGCTATACTCATTCTCAGAGGCCTGC
 CTCTGCACTGGAAATGGAGTCCTCAAGGCTACTATCTGATTTACTGTGCTGAATACCCTGATGGGTGG
 TACACAGACATACGGTTTAGCTTGGGTGCTTCTTATTTATTTGGGAATGGGAATAAACATTCATAGTG
 ACTATATATTGCCAGCTCAGGAAGCCTGGAGAAATCAGCTACAGGATCCACAAGGTGGCTTGTTTAC
 GTATGTTTCTGGAGCCAATTTCTCGGTGAGATCATTGAATGGATCGGCTATGCCCTGGCCACTTGGTCC
 CTCCCAGCACTTGCATTTGCATTTTCTCACTTTGTTTCTTGGGCTGCGAGCTTTCCACCACATAGGT
 TCTACCTCAAGATGTTTGAGGACTACCCCAAATCTCGAAAGCCCTTATCCATTCATCTT

ACGCGTACGCGGCCGCTCGAG - GFP Tag - GTTTAA

Protein Sequence: >RG213025 representing NM_000348
 Red=Cloning site Green=Tags(s)

MQVQCQSPVLGASATLVALGALALYVAKPSGYGKHTESLKPAATRLPARAAWFLQELPSFAVPAGILAR
 QPLSLFGPPGTVLLGLFCLHYFHRTFVYSLNLRGRYPAILILRGTAFTGNGVLQGYLLIYCAEYPDGW
 YTDIRFSLGVFLFILGMGINIHSYILRQLRKPEISYRIPQGGFTYVSGANFLGEIIEWIGYALATWS
 LPALAFFSLCFLGLRAFHHRFYLKMFEYDYPKSRKALIPFIF

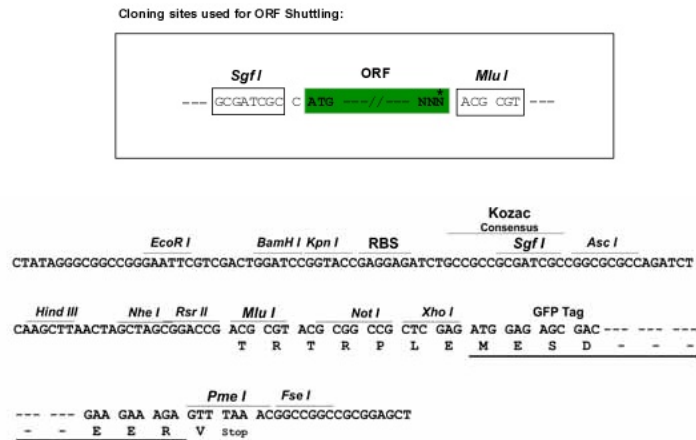
TRTRPLE - GFP Tag - V



[View online »](#)

Restriction Sites: SgfI-MluI

Cloning Scheme:



ACCN: NM_000348

ORF Size: 762 bp

OTI Disclaimer: The molecular sequence of this clone aligns with the gene accession number as a point of reference only. However, individual transcript sequences of the same gene can differ through naturally occurring variations (e.g. polymorphisms), each with its own valid existence. This clone is substantially in agreement with the reference, but a complete review of all prevailing variants is recommended prior to use. [More info](#)

OTI Annotation: This clone was engineered to express the complete ORF with an expression tag. Expression varies depending on the nature of the gene.

Components: The ORF clone is ion-exchange column purified and shipped in a 2D barcoded Matrix tube containing 10ug of transfection-ready, dried plasmid DNA (reconstitute with 100 ul of water).

Reconstitution Method:

1. Centrifuge at 5,000xg for 5min.
2. Carefully open the tube and add 100ul of sterile water to dissolve the DNA.
3. Close the tube and incubate for 10 minutes at room temperature.
4. Briefly vortex the tube and then do a quick spin (less than 5000xg) to concentrate the liquid at the bottom.
5. Store the suspended plasmid at -20°C. The DNA is stable for at least one year from date of shipping when stored at -20°C.

RefSeq: [NM_000348.4](#)

RefSeq Size: 2464 bp

RefSeq ORF: 765 bp

Locus ID: 6716

UniProt ID: [P31213](#)

Cytogenetics: 2p23.1

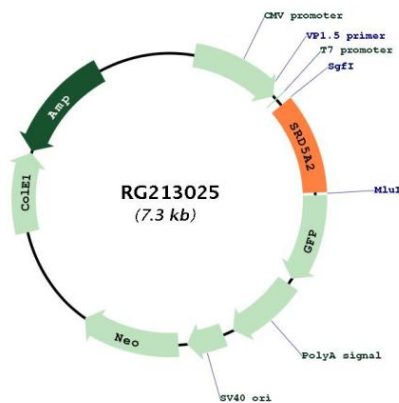
Domains: Steroid_dh

Protein Families: Druggable Genome, Transmembrane

Protein Pathways: Androgen and estrogen metabolism, Prostate cancer

Gene Summary: This gene encodes a microsomal protein expressed at high levels in androgen-sensitive tissues such as the prostate. The encoded protein is active at acidic pH and is sensitive to the 4-azasteroid inhibitor finasteride. Deficiencies in this gene can result in male pseudohermaphroditism, specifically pseudovaginal perineoscrotal hypospadias (PPSH). [provided by RefSeq, Jul 2008]

Product images:



Circular map for RG213025