

## Product datasheet for **RG213009**

### ST8SIA5 (NM\_013305) Human Tagged ORF Clone

#### Product data:

Product Type:	Expression Plasmids
Product Name:	ST8SIA5 (NM_013305) Human Tagged ORF Clone
Tag:	TurboGFP
Symbol:	ST8SIA5
Synonyms:	SIAT8-E; SIAT8E; ST8SiaV
Mammalian Cell Selection:	Neomycin
Vector:	pCMV6-AC-GFP (PS100010)
E. coli Selection:	Ampicillin (100 ug/mL)
ORF Nucleotide Sequence:	>RG213009 representing NM_013305 Red=Cloning site Blue=ORF Green=Tags(s)

TTTTGTAATACGACTCACTATAGGGCGGCCGGAATTCGTCGACTGGATCCGGTACCGAGGAGATCTGCC  
GCC**CGATCGCC**

ATGCGCTACGCGGACCCCTCGGCCAACCGGATTTGTTGGGGAGCCGAACCTTGCTCTTCATCTTCATCT  
GCGCCTTTGCCTTGGTGACCTTGTGCAACAGATCCTGTATGGCAGGAACACATTAAGAGGTACTTTGA  
ATTTTATGAGGGCCTTTTGAATATAACTCCACAAGATGCCTGGAGCTGAGGCACGAAATATTGGAAGT  
AAGGTGCTGTCCATGGTGAAGCAGTCAGAGCTGTTGACAGGTGGAAGAGCCTCCAGATGTGCAAAATGG  
CGATGAACATCTCTGAGGCCAACAGTTCAGTCTACTCTGTCCAGGTGCTGCAACGCCCTGCCTTTCT  
CTTCACCAACCAGAAACAACCTCCCTGGGACAAAGCTCAAGTATGAGGTGGACACCAAGTGGCATCTAC  
CACATCAACCAGGAGATCTTCCGCATGTTTCCCAAGGACATGCCCTACTACCGGTCCCAGTTTAAGAAGT  
GTGCTGTAGTGGCAACGGAGGCATCTTGAAGAACAGCCGCTGCGGGAGGGAGATCAACAGCGCCGACTT  
CGTCTTCCGGTGAACCTGCCCCCATCTCAGAGAAGTACACCATGGATGTGGGGTGAAGACGGATGTG  
GTCACGTGAACCCAGCATCATCACAGAGAGTTCACAAGCTGGAGAAGTGGCGGCGCCGTTTCTATC  
GCGTGTGACAGGTGTACGAGAACCGCTCGGTGCTGCTGCCTTCTACAACACGCGCAACACCCGACGT  
GTCCATCCGCGTCAAGTACGTGCTGGACGACTTCGAATCGCCGAAGCTGTCTACTACTTCCATCCGCAG  
TACCTGGTCAACGTGTCGCGTACTGGCTCAGCCTGGGGTGGCGCCAAGCGCATCAGCACCCGGCCTCA  
TTCTGGTCACTGCGGCGCTGGAGCTCTGTGAGGAGGTGCACCTCTTTGGCTTCTGGGCCTTCCCCATGAA  
CCCCCTCGGCCTCTACATCACTACCACTACTATGACAACGTCAAGCCGCGTCCCGGCTTCCACGCCATG  
CCCTCTGAGATCTTAACTTCTGCACTTGACAGCCGAGGCATCCTCCGCGTGCACACGGGCACCTGCA  
GCTGCTGC

AGCGGACCGACGCGTACGCGGCCGCTCGAG - GFP Tag - GTTTAA



[View online »](#)

**Protein Sequence:** >RG213009 representing NM\_013305  
 Red=Cloning site Green=Tags(s)

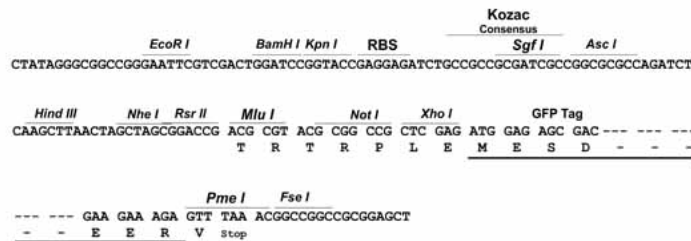
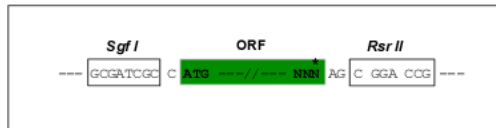
MRYADPSANRDLLGSRTLLFIFICAFALVTLQQLYGRNYIKRYFEFYEGPFEYNSTRCLELRHEILEV  
 KVL SMVKQSELFDRWKS LQMCKWAMNISEANQFKSTL SRCCNAP AFLFTTQKNTPLG TKLYEVD TSGIY  
 HINQE IFRMFPK DMPYYRSQFKKCAVVGNGGILKNSRCGREINSADVFVRCNLPP ISEKYTMDVGVKTDV  
 VTNVPSI ITERFHKLEKWRP FYRVLQVYENASVLL PAFYNTRNTDVSIRVKYVLD DFESPOQAVYFHPQ  
 YLVNVSRYWLSL GYRAKRISTGL ILVTA ALELCEEVHLFGFWAFPMNPSGLYITHHHYD NPKPRPGFHAM  
 PSEIFNFLHLHSRGILRVHTGTCSCC

SGP TRRRLE - GFP Tag - V

**Restriction Sites:** SgfI-RsrII

**Cloning Scheme:**

Cloning sites used for ORF Shuttling:



**ACCN:** NM\_013305

**ORF Size:** 1128 bp

**OTI Disclaimer:** The molecular sequence of this clone aligns with the gene accession number as a point of reference only. However, individual transcript sequences of the same gene can differ through naturally occurring variations (e.g. polymorphisms), each with its own valid existence. This clone is substantially in agreement with the reference, but a complete review of all prevailing variants is recommended prior to use. [More info](#)

**OTI Annotation:** This clone was engineered to express the complete ORF with an expression tag. Expression varies depending on the nature of the gene.

**Components:** The ORF clone is ion-exchange column purified and shipped in a 2D barcoded Matrix tube containing 10ug of transfection-ready, dried plasmid DNA (reconstitute with 100 ul of water).

**Reconstitution Method:**

1. Centrifuge at 5,000xg for 5min.
2. Carefully open the tube and add 100ul of sterile water to dissolve the DNA.
3. Close the tube and incubate for 10 minutes at room temperature.
4. Briefly vortex the tube and then do a quick spin (less than 5000xg) to concentrate the liquid at the bottom.
5. Store the suspended plasmid at -20°C. The DNA is stable for at least one year from date of shipping when stored at -20°C.

**RefSeq:** [NM\\_013305.6](#)

**RefSeq Size:** 2627 bp

**RefSeq ORF:** 1131 bp

**Locus ID:** 29906

**UniProt ID:** [O15466](#)

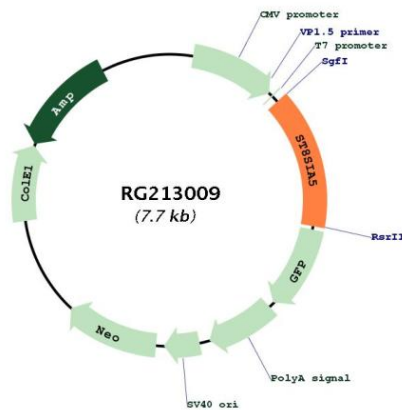
**Cytogenetics:** 18q21.1

**Protein Families:** Transmembrane

**Protein Pathways:** Glycosphingolipid biosynthesis - ganglio series, Metabolic pathways

**Gene Summary:** The protein encoded by this gene is a type II membrane protein that may be present in the Golgi apparatus. The encoded protein, which is a member of glycosyltransferase family 29, may be involved in the synthesis of gangliosides GD1c, GT1a, GQ1b, and GT3 from GD1a, GT1b, GM1b, and GD3, respectively. [provided by RefSeq, Jul 2008]

### Product images:



Circular map for RG213009