

Product datasheet for **RG213001**

GFRAL (NM_207410) Human Tagged ORF Clone

Product data:

Product Type:	Expression Plasmids
Product Name:	GFRAL (NM_207410) Human Tagged ORF Clone
Tag:	TurboGFP
Symbol:	GFRAL
Synonyms:	bA360D14.1; C6orf144; GRAL; UNQ9356
Mammalian Cell Selection:	Neomycin
Vector:	pCMV6-AC-GFP (PS100010)
E. coli Selection:	Ampicillin (100 ug/mL)
ORF Nucleotide Sequence:	>RG213001 representing NM_207410 Red=Cloning site Blue=ORF Green=Tags(s)

TTTTGTAATACGACTCACTATAGGGCGGCCGGAATTCGTCGACTGGATCCGGTACCGAGGAGATCTGCC
GCC**CGATCGCC**

ATGATAGTGTATTTCTTGGCTATGGGGTTAAGCTTGGAAAATGAATACACTTCCCAAACCAATAATT
GCACATATTTAAGAGAGCAATGCTTACGTGATGCAAAATGGATGTAACATGCTTGGAGAGTAATGGAAGA
TGCTGCAATGATTCAGATCCAGGTGACCCCTGCAAGATGAGGAATTCATCATACTGTAACCTGAGTATC
CAGTACTTAGTGGAAAGCAATTTCCAATTTAAAGAGTGTCTTGGACTGATGACTTCTATTGTACTGTGA
ACAACTGCTTGGAAAAAATGTATCAATAAATCAGATAACGTGAAAGAGGATAAATTCAAATGGAATCT
AACTACACGTTCCCATCATGGATTCAAAGGGATGTGGTCCTGTTTGGAAAGTGGCAGAGGCATGTGTAGGG
GATGTGGTCTGTAATGCACAGTTGGCCTTTACCTTAAAGCTTGCTCAGCAAATGGAAATCCGTGTGATC
TGAAACAGTGCCAAGCAGCCATACGGTTCTTCTATCAAAATATACCTTTTAAACATTGCCAGATGTTGGC
TTTTTGTGACTGTGCTCAATCTGATATACCTTGTGACAGTCCAAAGAAGCTCTTACAGCAAGACATGT
GCAGTGAACATGGTTCACCCCTACTTGCCTCAGTGTAAATCGCAGTGCCAAAATGATGAATTATGCA
GGAGGCACTATAGAACATTTTCAGTCAAAATGCTGGCAGCGTGTGACTAGAAAGTGCCATGAAGATGAGAA
TTGCATTAGCACCTTAAGCAAACAGGACCTCACTTGTTCAGGAAGTGTGACTGCAAAGCTGCTTACATA
GATACCTTGGGACGGTCTTCAAGTCAATGTACCTGTAGGACCATTACACAAAGTGGGAATCTTTGT
GTAAGATTTCCAGCACATGCTTCATAGAAAATCATGTTTCAATTATCCAACCCTGTCTAATGTCAAAGG
CATGGCATTGTATACAAGAAAACATGCAAAACAAATCACTTTAACTGGATTTTCAATCCCCCTTCAATGGA
GAAGTAATCTATGCTGCCATGTGCATGACAGTCACCTGTGGAATCCTTCTGTTGGTTATGGTCAAGCTTA
GAACCTCCAGAATATCAAGTAAAGCAAGAGATCCTTACCGATCCAAATACCTGGAGAATC

ACCGTACGCGGCCGCTCGAG - GFP Tag - GTTTAA



[View online »](#)

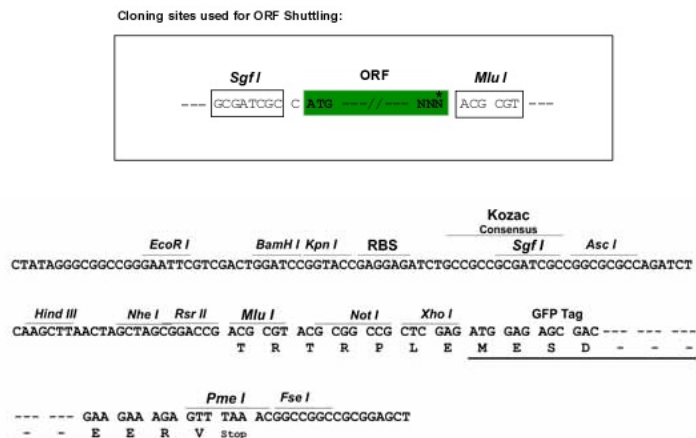
Protein Sequence: >RG213001 representing NM_207410
 Red=Cloning site Green=Tags(s)

MIVFIFLAMGLSLENEYTSQTNNCTYLREQCLRDANGCKHAWRVMEDACNDSDPGDPCKMRNSSYCNLSI
 QYLVESNFQFKECLCTDDFYCTVNLKLGKKCINKSDNVKEDKFKWNL TTRSHHGFKGMWSCLEVAEACVG
 DVVCNAQLASYLKACSANGNPCDLKQCQAAIRFFYQNI PFNIAQMLAFCDCAQSDIPCQQSKEALHSKTC
 AVNMVPPPTCLSVIRSCQNDL CRRHYRTFQSKCWQRVTRKCHEDENCISTLSKQDLTCSGSDDCCKAAYI
 DILGTVLQVQCTCRTITQSEESLCKIFQHMLHRKSCFNYP TLSNVKGMALYTRKHANKITLTGFHSPFNG
 EVIYAAMCMTVTGILLLV MVKLRTSRISSKARDPSPIQIPGEL

TRTRPLE - GFP Tag - V

Restriction Sites: SgfI-MluI

Cloning Scheme:



ACCN: NM_207410

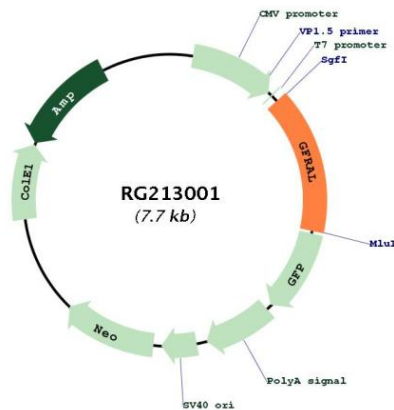
ORF Size: 1182 bp

OTI Disclaimer: Due to the inherent nature of this plasmid, standard methods to replicate additional amounts of DNA in E. coli are highly likely to result in mutations and/or rearrangements. Therefore, OriGene does not guarantee the capability to replicate this plasmid DNA. Additional amounts of DNA can be purchased from OriGene with batch-specific, full-sequence verification at a reduced cost. Please contact our customer care team at custsupport@origene.com or by calling 301.340.3188 option 3 for pricing and delivery.

The molecular sequence of this clone aligns with the gene accession number as a point of reference only. However, individual transcript sequences of the same gene can differ through naturally occurring variations (e.g. polymorphisms), each with its own valid existence. This clone is substantially in agreement with the reference, but a complete review of all prevailing variants is recommended prior to use. [More info](#)

OTI Annotation: This clone was engineered to express the complete ORF with an expression tag. Expression varies depending on the nature of the gene.

Components:	The ORF clone is ion-exchange column purified and shipped in a 2D barcoded Matrix tube containing 10ug of transfection-ready, dried plasmid DNA (reconstitute with 100 ul of water).
Reconstitution Method:	<ol style="list-style-type: none"> 1. Centrifuge at 5,000xg for 5min. 2. Carefully open the tube and add 100ul of sterile water to dissolve the DNA. 3. Close the tube and incubate for 10 minutes at room temperature. 4. Briefly vortex the tube and then do a quick spin (less than 5000xg) to concentrate the liquid at the bottom. 5. Store the suspended plasmid at -20°C. The DNA is stable for at least one year from date of shipping when stored at -20°C.
RefSeq:	<u>NM_207410.1, NP_997293.1</u>
RefSeq Size:	1911 bp
RefSeq ORF:	1185 bp
Locus ID:	389400
UniProt ID:	<u>Q6UXV0</u>
Cytogenetics:	6p12.1
Protein Families:	Druggable Genome, Transmembrane
Gene Summary:	Brainstem-restricted receptor for GDF15 which regulates food intake, energy expenditure and body weight in response to metabolic and toxin-induced stresses (PubMed:28953886, PubMed:28846097, PubMed:28846098, PubMed:28846099). Upon interaction with its ligand, GDF15, interacts with RET and induces cellular signaling through activation of MAPK- and AKT-signaling pathways.[UniProtKB/Swiss-Prot Function]

Product images:


Circular map for RG213001